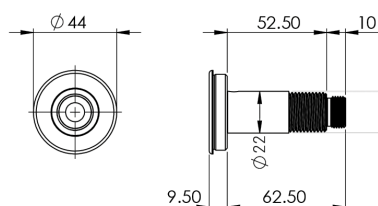


## Push sensor for backplates with blue insert

VR00-007



### VR00-007

Push sensor for backplates with blue insert

KWC DVS tactile switch for backplates.  
Brushed finish stainless steel bezel with temperature indication insert.

### Technical data

Material	Stainless Steel
Surface finish	Brushed
Gross weight	0.2 kg
Overall dimensions	72mm (L) x Ø44mm
Thread diameter	Ø21mm (½" BSP)
Type of mounting	Backplate mounted
Operation type	Tactile switch
Cable length	15m