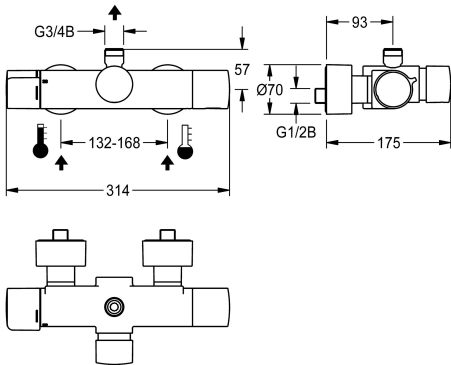


KWC F5S-Therm  
Self-closing thermostatic wall-mounted mixer with pre-fitted hygiene unit

Modell-Linie: F5S | F5ST2109  
Showers | Self closing showers



KWC-No.

3600008422

NEW

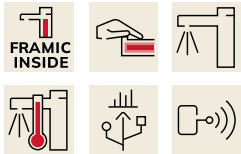
F5S-Therm self-closing thermostatic mixer DN 15 for wall mounting, for shower facilities. Hydraulically controlled, connects to hot water and cold water. Pre-fitted hygiene unit with C-module including control electronics, 6 V lithium battery (CR-P2) and solenoid valve cartridge for automatic hygiene flushing and saving of statistical data. FRAMIC self-closing cartridge, hydraulically controlled, low maintenance and stagnation free, with ceramic disc technology, self closing, flow pressure independent due to medium-independent design. Fully adjustable flow duration. Thermostat with metal handle with adjustable and turn-proof temperature stop, with option

for performance of manual thermal disinfection. Scald-protected, safe-touch housing with outlet on top, G 3/4 B, for installation of outlet bend or wall-mounted shower pipe. All-metal construction, polished chromium-plated brass. With adjustable and lockable connections with backflow preventers and strainers, fully covered by depth-adjustable screw rosettes. Activated hygiene flushing, fixed interval of 24 hours. With option for radio-controlled parameterisation, read-out of statistical data, realisation of predefined calendar functions as well as grouping of taps to perform predefined control functions via the necessary app.

Technical Data

additional connections
with backflow preventer
circulation
compatible A3000 open
connection with pay water disp
default automatic hygiene flus
with filter
adjustable flow time
functional principle
for hand shower
hygiene flushing
diameter nominal
inlet size
Locking mechanism
material fitting
maximum flow time
minimum flow pressure
minimum flow time
type of mixing
number of batteries
overall depth
overall height

no
yes
no
no
not possible
fixed interval 24 hours
yes
yes
hydraulic self-closing
no
yes
DN 15
G 1/2 B
Top section, ceramic
brass
35 Seconds
1 bar
5 Seconds
with thermostat
1
175 mm
70 mm



KWC F5S-Therm  
Self-closing thermostatic wall-mounted mixer with pre-fitted hygiene unit

Modell-Linie: F5S | F5ST2109  
Showers | Self closing showers

overall width	314 mm
Parameterization	app
power supply connection	Battery 6 V
Type of power supply	Battery
protective system IP	IP59K
with rosettes/cover plate	yes
protective shutdown	no
shower pipe draining	no
sound insulation	no
surface finish fitting	chromed
surface treatment fitting	polished
temperature limit	yes
thermal disinfection	manual thermal disinfection
with transformer/power supply	no
type of batteries	CR-P2 Lithium battery 6V
type of mounting	wall mounting
type of operation	manual operation
type of shower	wall fitting
volume flow rate at 3 bar	0.3 l/s
water connection	S-connections
position of water connection	from backside
Accent colour	none
Basic colour	chrome-look (glossy)

Optional Accessories



Bent outlet  
2030050434  
ACXX2005



Bent outlet  
2030050435  
ACXX2006



Shower pipe  
2030041522  
ACSX2002



AQUAJET-Slimline shower head  
2000103757  
AQUA757

**KWC F5S-Therm**  
Self-closing thermostatic wall-mounted mixer with pre-fitted hygiene unit

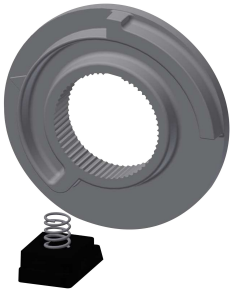
Modell-Linie: **F5S | F5ST2109**  
Showers | Self closing showers



**AQUAJET-Comfort shower head**

**2030021283**  
SHAC0008

**Spare Parts**



**Temperature stop**

**2030003296**  
EAQLT0003



**Plug chromed**

**2030053006**  
ASSX9004



**Guide ring**

**2030048356**  
ASSX9002



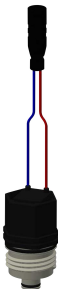
**Safety ring**

**2030048357**  
ASSX9003



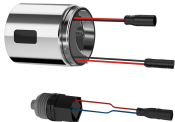
**FRAMIC Self-closing cartridge**

**2030046145**  
ASSX9001



**Solenoid valve cartridge**

**2030045522**  
ACXX9002



**Hygiene unit for compatible KWC self-closing thermostatic wall-mounted mixers**

**3600008376**  
ACST9002