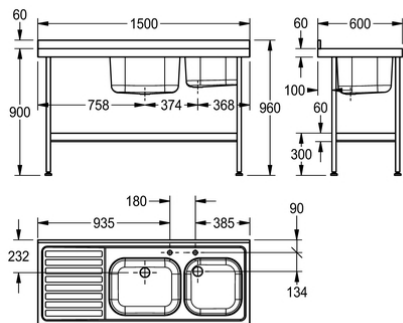


KWC

Mini catering sink - double bowl



E20606L

Mini catering sink

Mini catering sink 1500mm x 600mm with double bowl and left hand drainer. Manufactured from 1.2mm thick, grade 1.4301 (304) stainless steel, with a satin finish. Designed with tap holes drilled for mixer taps only. An earthing lug is fitted under the drainer. Stainless steel underframes and shelf (sold separately) are supplied in a flat pack form with easy to read assembly instructions.

Each leg is fitted with an adjustable foot (-20, +10mm) with a working height of 900mm. The sink is supplied with a 38mm waste, plug, chain and overflow.

Technical data

Bowl - bowl depth	300mm
Bowl finish	Satin finish
Bowl depth	500mm
Bowl width	400mm
Drainer position	Left
Drainer or storage	Drainer
Drainer / storage board quantity	1
Gross weight	17.7kg
Material	Stainless steel
Material code	1.4301 chrome nickel steel V2A
Material thickness	1.2mm
Overall depth	600mm
Overall height	900mm
Overall width	1,500mm
Surface finish	Satin finish
Tap ledge	Yes
Type of mounting	Floor mounting
Waste hole position	Centre back
Waste hole projection	232mm
Waste size	DN 40
Net weight	17.7kg