

TOP OF THE CLASS SAVINGS

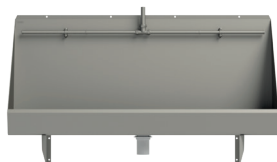


SATURN WASHTROUGH

Wall-mounted stainless steel washtroughs with a tap ledge, optional splashbacks, and manual or electronic self-closing controls.

Dimensions: 2400 X 215 X 415mm

SANX240 With 4 tap holes



CENTINEL URINAL TROUGHS - EXPOSED SPARGE

Centinel wall-mounted urinals with exposed sparge pipe. Dimensions: 555 x 300mm

CEN120E 1200mm wide urinal

CEN150E 1500mm wide urinal

CEN180E 1800mm wide urinal



JUMBO TOILET ROLL HOLDER

Jumbo roll holder for wall mounting, stainless steel, surface satin finished, material thickness 0.8mm.

CHRX670 369 x 369 x 108mm

CHRX669 269 x 269 x 116mm



F3 SELF-CLOSING TAP

Dimensions: 170 x 480mm (H x D)

F3SV1101



DECK MOUNTED SOAP DISPENSER

Dimensions: 44 x 400 x 162mm

SD80

**10% OFF
SELECTED
PRODUCTS
ON ORDERS
IN APRIL!***

***T&Cs apply** - Receive 10% off when you spend £500 or more on selected products - Offer ends 30th April 2025.

To place an order or find out more

KWC DVS | North: 14 Napier Court, Barlborough, S43 4PZ | South: Kemmings Close, Paignton, TQ4 7TW
North: 01246 458900 | South: 01803 529021 | kwcdvssales@kwc.com | www.dartvalley.co.uk



WALL HUNG CERAMIC BASIN 380MM

Designed with a right-hand tap hole. Complete without overflow and fixings for installation. Dimensions: 380 x 175 x 300mm

SW00-047 Basin with right-hand tap hole
SW00-048 Basin with left-hand tap hole



CHARTHAM SEMI-RECESSED BASIN 450

Chartham 450mm Semi-recessed basin with right-hand tap hole offers a sleek, easy to clean modern design. Dimensions: 450 x 360 x 185mm

SW00-098



CHARTHAM 530 BASIN

Chartham 530mm countertop basin with central tap hole. Complete with centre tap hole and waste. Dimensions: 530 x 435 x 225mm

SW00-114



FLUSHINO BACK TO WALL WC

Our Flushino Back to Wall toilet pan is the ideal height for young children at 350mm, to encourage and support hygienic, independent use. Meets BS EN997:2018

SW00-120



LANGLEY CONCEALED TRAP URINAL BOWL

Concealed trap urinal bowl. HBN / HTM compliant urinal bowl. Dimensions: 375 x 645 x 350mm

SW00-084



CHARTHAM CERAMIC WC

Rimless back to wall WC pan, manufactured from high-quality vitreous china to BS 340. Dimensions: 360 x 425 x 520mm

SW00-028



FLUSHMATIC URINAL CONTROL - MAINS

Flushmatic urinal control. Designed for use with multiple station urinals. Supplied with mains power supply 240V AC. Dimensions: 120 x 100 x 45mm

UC01-017



WALL MOUNTED WASHBASIN 240MM WITH APRON

Dimensions: 290 x 157 x 290mm

D20161N Wash basin



WALL MOUNTED WASHBASIN 290MM WITH APRON

Dimensions: 340 x 185 x 345mm

D20162N Wash basin

***T&Cs apply** - Receive 10% off when you spend £500 or more on selected products - Offer ends 30th April 2025.

To place an order or find out more

KWC DVS | North: 14 Napier Court, Barlborough, S43 4PZ | South: Kemmings Close, Paignton, TQ4 7TW
North: 01246 458900 | South: 01803 529021 | kwcdvssales@kwc.com | www.dartvalley.co.uk



DARTMOUTH HD - BLACK

Stainless steel touch-free hand dryer, manufactured from grade 304 stainless steel. The Dartmouth hand dryer provides a sleek and efficient solution for modern washrooms.

Dimensions: 152 x 268 x 100mm

AT10-042



DARTMOUTH SOAP DISPENSER - STEEL

Dartmouth touch-free soap dispenser for wall mounting, manufactured from grade 304 stainless steel.

Dimensions: 110 x 268 x 107mm (w x h x d)

AC00-030



DARTMOUTH HAND DRYER - SATIN

Manufactured from grade 304 stainless steel.

Dry time: 10 seconds

Noise: 69 dB - 76 dB

Air speed: 65 - 92 m/s adjustable

Dimensions: 152 x 268 x 100mm

AT10-045



WALL-MOUNTED CLEANERS SINK WITH GRID

Cleaners sink

Mounting: Wall-mounted

Bowl dimensions: 436 x 190 x 300mm

Dimensions: 436 x 490 x 339mm

WB440COP-UK



STAINLESS STEEL FLOOR STANDING BUCKET SINK

Designed with splash back, hinged grating, 38mm BSP waste fitting and complete with integral wall brackets.

Dimensions: 500 x 800 x 517mm

G21663N



AQUAJET-SLIMLINE SHOWERHEAD BOTTOM INLET

Spout projection: 83mm

Head Dimensions: 72 x 72 x 83mm

AQUA757



CORNER WC DOC M PACK - CLOSE COUPLED BLUE (RAL 5011)

1 x double arm hinged support rail 760mm

4 x straight grab rail 35 x 600mm

1 x straight grab rail 35 x 450mm

DMPXF5LHB

Left-hand

DMPXF5RHB

Right-hand



TOILET ROLL HOLDER

Manufactured from grade (304) stainless steel with a satin polish finish with folding cover.

Suitable for rolls with a maximum diameter of 130mm. Fixings are included. Dimensions: 145 x 70 x 30mm

BS677



CHILLED DRINKING FOUNTAIN

KWC DVS drinking fountains supply unlimited chilled drinking water. These products come with a standard chlorine-based water filter that should be replaced every six months.

ANMX309

With bubbler & bottle filler

ANMX308

With bubbler

***T&Cs apply** - Receive 10% off when you spend £500 or more on selected products - Offer ends 30th April 2025.

To place an order or find out more

KWC DVS | North: 14 Napier Court, Barlborough, S43 4PZ | South: Kemmings Close, Paignton, TQ4 7TW

North: 01246 458900 | South: 01803 529021 | kwcdvssales@kwc.com | www.dartvalley.co.uk