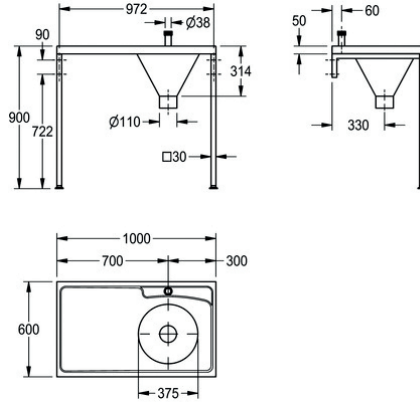


DUH hospital disposal unit



G22025L

Hospital disposal unit

A DUH hospital disposal unit manufactured from 1.2mm thick, grade 1.4301 (304) stainless steel with a satin polish finish. The top is turned down on all four edges and incorporates a wet area recess. Fitted with a sluice hopper at one end supplied with a top inlet. The hopper has a 110mm dia. outlet which can accept a P or S trap, available as an extra. Stainless steel cisterns are available with stainless steel downpipes or plastic cisterns with plastic downpipes are available. Plastic cisterns

have a 9 litres capacity whereas the stainless steel cistern can be 6, 7 or 9 litre capacity and all are fitted with a 13mm HP brass valve, plastic float and CP metal flushing lever handles. The unit should only be fed from a cistern or tank water supply. L or R after the code number refers to the handing of the drainer ie. left or right when facing front of unit. Unit can be mounted on either stainless steel cantilever brackets or stainless steel front leg supports.

Technical data

Bowl - bowl depth	300mm
Bowl finish	Satin finish
Bowl width	375mm
Drainer position	Left
Drainer or storage	Drainer
Gross weight	12.5kg
Material	Stainless steel
Material code	1.4301 chrome nickel steel
Material thickness	1.2mm
Minimum flushing capacity	6 litre
Outlet size	DN 100
Overall depth	600mm
Overall height	300mm
Overall width	1,000mm
Surface finish	Satin finished
Type of mounting	Wall and floor mounting
Net weight	11.3kg