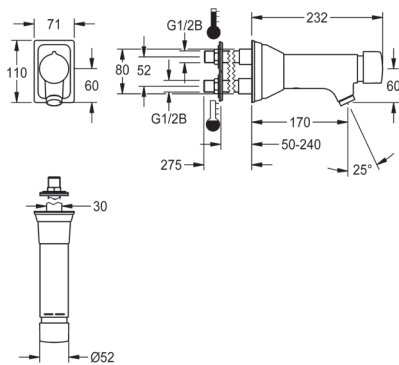


KWC

Self-closing wall-mounted mixer for rear panel mounting



F5SM1012

Self-closing wall-mounted mixer

F5S-Mix is a self-closing wall-mounted mixer with angled outlet, ideal for high-risk vandalism areas. It features FRAMIC self-closing mixer cartridge, ceramic disc technology, flow pressure independent design, and adjustable temperature stop. It is made of polished, chromium-plated brass and comes with an anti-theft aerator with an integrated flow regulator. It can be connected to hot and cold water and is suitable for wall thicknesses from 50 to 240mm.

Technical data

With backflow preventer	Yes
Calculation flow rate cold water	0.07l/s
Calculation flow rate hot water	0.07l/s
Depressurised	No
With filter	Yes
Adjustable flow time	Yes
Functional principle	Hydraulic self-closing
Hygiene flushing	No
Diameter nominal	DN 15
Inlet size	G 1/2 B
Locking mechanism	Top section, ceramic
Material fitting	Chromium-plated brass
Maximum flow time	35 seconds
Minimum flow pressure	1 bar
Minimum flow time	5 seconds
Type of mixing	Yes
With rosettes / cover plate	Yes
Protective shutdown	No
Spout	Fixed
Spout projection	170mm
Surface finish fitting	Chrome
Surface treatment fitting	Polished
Temperature limit	Yes
Thermal disinfection	No
Type of mounting	Concealed
Type of operation	Manual operation
Type of tap	Bib tap
Volume flow rate at 3 bar	0.1 l/s

KWC

Self-closing wall-mounted mixer for rear panel mounting

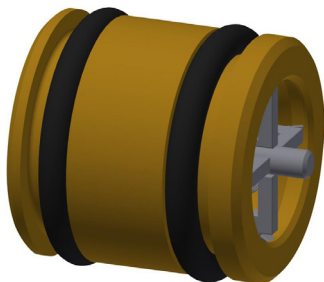
Technical data	
Water connection	Threaded connection (external)
Accent colour	None
Basic colour	Chrome - glossy

Optional accessories



Optional accessories
AQRM909 Outlet extension

Spare accessories



Spare accessories
ETAPS0040 Guide bushing



Spare accessories
ZAQUA087 Aerator



Spare accessories
ASSX9004 Plug chromed



Spare accessories
ASSM9004 Handle push cap

Spare accessories



Spare accessories
ASSX9002 Guide ring



Spare accessories
ASSM9002 Temperature stop



Spare accessories
ASSX9003 Safety ring



Spare accessories
ACXM1002 Wall flange