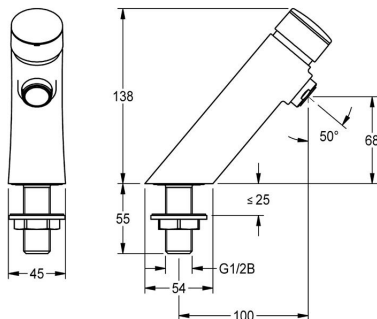


KWC
F3S Self-closing pillar tap



F3SV1101

Self-closing pillar tap

F3S Self-closing pre-mixed pillar tap manufactured from brass with chrome finish. Self-closing cartridge, hydraulically controlled, piston-free design, self-closing, stepless adjustment of flow duration. For connection to pre-mixed hot water or cold water. Casing, high-polished chromium-plated brass.

Flow rate at 3 bar: 3.0 l/min.
Dimensions: 45 x 138 x 100mm

Technical data

With backflow preventer	No
Compatible A3000 open	No
Depressurised	No
With filter	No
Adjustable flow time	Yes
Functional principle	Hydraulic self-closing
Hygiene flushing	No
Diameter nominal	DN 15
Inlet size	G 1/2 B
Locking mechanism	Top section, ceramic
Material fitting	Brass
Maximum flow time	20 seconds
Minimum flow pressure	1 bar
Minimum flow time	5 seconds
Type of mixing	No
Pop-up waste set	No
With rosettes / cover plate	No
Protective shutdown	No
Sound insulation	No
Spout	Fixed
Spout projection	100mm
Surface finish fitting	Chromium-plated brass
Surface treatment fitting	Polished
Temperature limit	No
Thermal disinfection	No
Type of mounting	Tap hole
Type of operation	Manual operation
Type of tap	Pillar tap
Volume flow rate at 3 bar	0.05l/s
Water connection	Threaded connection (external)

KWC

F3S Self-closing pillar tap

Mandatory accessories



Mandatory accessories

AC17-047

Thermostatic mixing valve

Complimentary accessories



Complimentary accessories

SD80

Tabletop soap dispenser