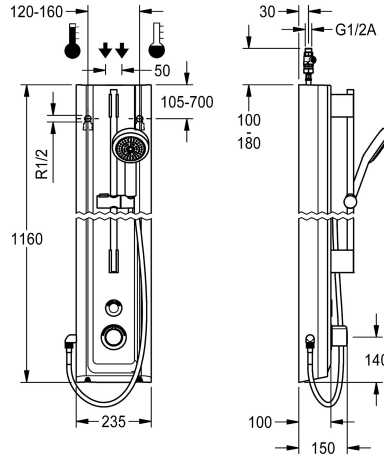


## KWC

### F5E Therm MIRANIT shower panel with hand shower fitting

#### Modell-Linie: F5 | F5ET2025

Showers | Electronic self closing shower



#### KWC-No.

**2030056573**

F5ETherm shower panel made of mineral material for wall mounting with thermostatic mixer and a hand shower fitting. Electrically controlled, for connection to hot water and cold water. Shower valve with integrated solenoid valve cartridge, thermostat and mechanism for optional bypass solenoid valve cartridge to perform program-controlled thermal disinfection. Thermostat with metal handle, an adjustable and turn-proof temperature stop and an option for manual thermal disinfection. All-metal construction, visible parts high-polished or chrome-plated. Pre-fitted chrome-plated brass shower pole with height-adjustable hand shower holder and chrome-plated plastic hand shower, shower head with rain jet, diameter 110 mm, shower hose 900 mm. Housing with raised function surface made of MIRANIT resin-bonded mineral material with pore-free smooth surface (temperature-resistant up to 80 °C),

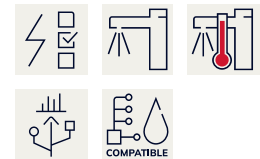
Alpine white colour. Button sensor including control electronics with start/stop function and deactivation for cleaning. Connecting hoses with lockable water volume control with backflow preventer and strainer. Activated water hygiene flushing 24 hours after last activation and saving of statistical data. With option for parameterization and communication via the optional bidirectional remote control. Battery operation with 6 V lithium battery (CR-P2) per fitting, separate power supply via plug-in power supply unit 6.75 V/12 V DC or AQUA 3000 open system accessories.

Dimensions of housing 235 x 1160 x 100 mm (W x H x D)

Battery compartment including battery or plug-in power supply unit with extension cable to be ordered separately.

#### Technical Data

additional connections	no
with backflow preventer	yes
circulation	no
compatible A3000 open	yes
connection with pay water disp	via electronic module
default automatic hygiene flus	24h after the last activity
default flow time	30 Seconds
with filter	yes
adjustable flow time	yes
functional principle	electronic self-closing
for hand shower	yes
hygiene flushing	yes
diameter nominal	DN 15
inlet size	G 1/2 A
Locking mechanism	Top section, non-ceramic
material casing	mineral material
material code casing	Miranit
material fitting	brass
maximum flow time	255 Seconds



## KWC

### F5E Therm MIRANIT shower panel with hand shower fitting

#### Modell-Linie: F5 | F5ET2025

Showers | Electronic self closing shower

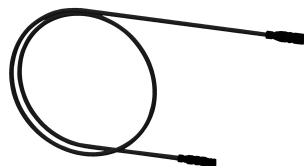
minimum flow pressure	1 bar
minimum flow time	1 Seconds
type of mixing	with thermostat
overall depth	100 mm
overall height	1,160 mm
overall width	235 mm
Parameterization	remote control
power supply connection	6,75 / 12 VDC / A3000 open
position of power connection	from top / backside
Type of power supply	Other
with rosettes/cover plate	yes
protective shutdown	yes
shower pipe draining	no
with shower set	yes
sound insulation	no
surface finish fitting	chromed
surface treatment fitting	polished
tailor made	no
temperature limit	yes
thermal disinfection	yes
with transformer/power supply	no
type of mounting	wall mounting
type of operation	sensor operation
type of sensor	opto-electronic sensor
type of shower	shower panel
water connection	hose (gland nut)
position of water connection	from top / backside
with soap dish	no
Accent colour	chrome-look (glossy)
Basic colour	white

#### Mandatory Accessories



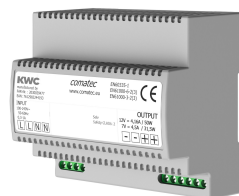
##### Battery compartment

**2000109466**  
ZAQCT0003



##### Extension cable 5 m

**2030043814**  
ACEX9010



##### Power supply unit

**2030039477**  
ACEX9001

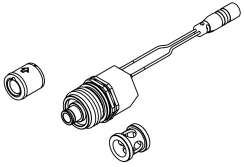
## KWC

### F5E Therm MIRANIT shower panel with hand shower fitting

**Modell-Linie: F5 | F5ET2025**

Showers | Electronic self closing shower

#### Optional Accessories



**Set for thermal disinfection**

**2030057940**  
ACXT2001



**Bidirectional remote control for electronic fittings F3 and F5**

**2030036654**  
ACEX9005



**2-button remote control for fittings F3 and F5**

**2030036849**  
ACEX9004



**Housing extension for F5 shower panels made of MIRANIT**

**2030057071**  
ACXX2016



**Housing extension for F5 shower panels made of MIRANIT**

**2030057073**  
ACXX2018



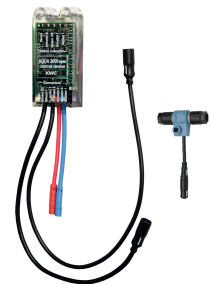
**Housing extension for F5 shower panels made of MIRANIT**

**2030057075**  
ACXX2019



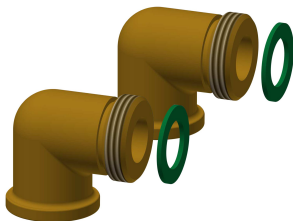
**Housing extension for F5 shower panels made of MIRANIT**

**2030057076**  
ACXX2020



**Electronic module EM5 for F5 shower taps**

**2030041918**  
ACET2001



**Connection set for shower panel**

**2000104916**  
ZSHOW0006



**Connection adapter**

**2000101441**  
AQRM928

#### Spare Parts

## KWC

### F5E Therm MIRANIT shower panel with hand shower fitting

Modell-Linie: F5 | F5ET2025

Showers | Electronic self closing shower



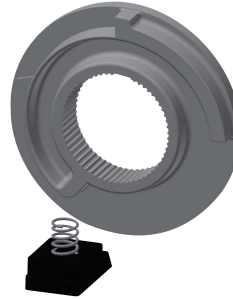
**Cover**

**2030031443**  
ESHOW0059



**Temperature handle**

**2030047082**  
ASXT9003



**Temperature stop**

**2030003296**  
EAQLT0003



**Solenoid valve cartridge**

**2030003033**  
EAQFU0001



**Hand shower**

**2030051216**  
ACXX2007