

**KWC DVS**

Professional

**INFORM**

PRECISION WITH EVERY DROP

# Contents

Table of contents

KWC DVS INTRODUCTION	1 - 5
THE WORLD OF INFORM	6 - 7
BIOMASTER	8 - 9
PROJECT REFERENCES	10 - 11
INFORM MONITOR	12 - 23
INFORM OUTLET	24 - 35
INFORM CONTROL	36 - 45
INFORM CUSTODIAL	46 - 56

# Contact Us

KWC DVS  
+44 (0) 1803 529 021  
+44 (0) 1246 458 900  
+44 (0) 7976 634 819  
kwcdvsinform.gb@kwc.com  
www.dartvalley.co.uk

Lobill  
+353 (0) 1572 7757  
+44 (0) 2890 461 755  
Info@lobillwc.com  
www.lobillwc.ie

FOR INTERNATIONAL ENQUIRIES  
+44 (0) 1803 529 021  
+44 (0) 1246 458 900  
+44 (0) 7976 634 819  
kwcdvsinform.gb@kwc.com  
www.dartvalley.co.uk



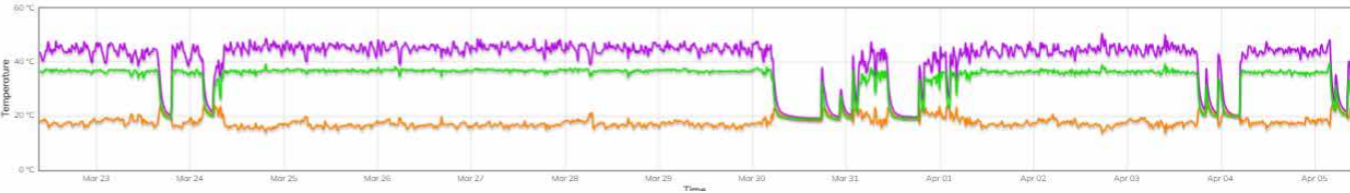
# INFORM

## Not just another monitoring system

**Streamline Water Management with INFORM: Remote Control & Data-Driven Insights**

INFORM empowers facilities to take complete control of their water systems via:

- Remote Wireless Control:** Manage taps, showers, and solenoid valves remotely from a user-friendly online platform, improving efficiency and reducing reliance on manual checks.
- Real-Time Data & Monitoring:** Gain continuous insights into water usage and temperature, enabling proactive maintenance and ensuring compliance with regulations.



- Detailed Reporting & Analysis:** Generate comprehensive reports to identify trends and potential issues before they escalate, maximising water safety and hygiene.
- Unparalleled Compatibility:** INFORM seamlessly integrates with a wide range of taps, spouts, showers, and clinical basins, offering a flexible solution.

**Trusted Expertise Meets Innovation:**  
INFORM is a water management solution designed and manufactured by KWC DVS with over 35 years of expertise in managing water systems in some of the most demanding and challenging locations. This rich heritage fosters a culture of continuous innovation, ensuring INFORM delivers a reliable and cutting-edge solution.

- Take Control, Experience the Difference.**  
Take control of your water system and prioritise water safety and compliance.
- See the difference for yourself with a Free Trial.**

Contact us today to explore how INFORM can benefit your facility.



KWC DVS

# Over 235 years of washroom expertise and knowledge

Specialising in water saving technology for commercial washrooms, KWC DVS Ltd. has been producing leading automatic washroom technology for over 35 years. KWC DVS is a market leader in the field of water-saving products along with automatic washroom products for specialist applications, including healthcare, mental healthcare, custodial and the public sector.



KWC DVS Northern Office, Chesterfield, UK



KWC DVS Southern Office, Devon, UK

Alongside our extensive product portfolio, an expert team of engineers are on hand to support installations, whilst our technical sales teams give tailored project support and specification advice.

The KWC Group combines the benefits of reduced water consumption with a focus on hygienic design. KWC DVS are proud to be part of a global Group that produces products which have been used in both domestic and commercial environments for many years.

The KWC brand brings together a collection of international expertise which forms KWC Group. We unite our global washroom divisions under the new KWC brand.

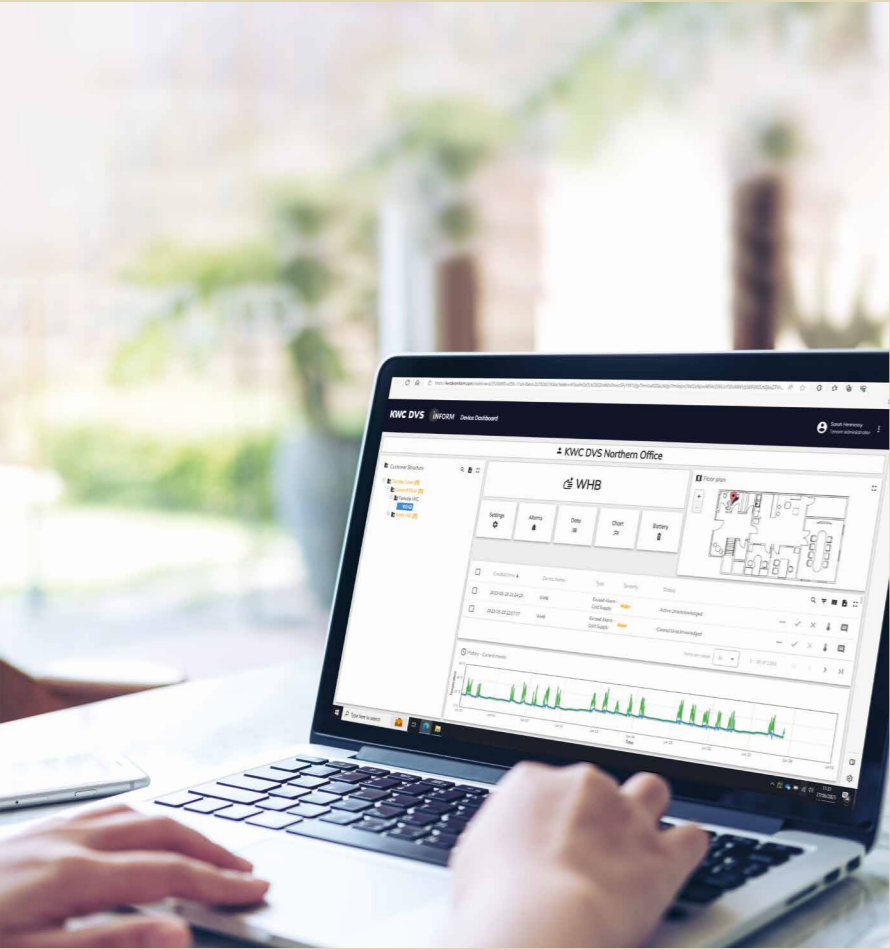
Together we have been developing and improving our products and expertise for decades, in some cases more than a century. This is what makes us trusted suppliers for major projects across the world.

# Welcome to the world of INFORM

## Not just another monitoring system

### INFORM Monitor

Monitor water temperatures to ensure a greater understanding of your water systems behaviour and be alerted when operating outside the required parameters. This smart digital solution provides detailed, exportable data for current and historical periods. Discover trends and the impact of operational changes or remedial works. Identification of high-performing areas can allow replication and improvement across your water system. INFORM Monitor data empowers confident decisions with clear evidence, replacing guesswork and assumptions. With a selection of user friendly, configurable alarms which can be set to alert when required temperature profiles are not met, thereby aiding compliance. Prioritise areas of greatest need and maximise efficiency. Easy to use online platform packed with features.



### INFORM Control

INFORM Control allows you to understand the behaviour of your water system, remotely implement changes and see the impact in real-time, from anywhere in the world.

A range of products that provide unrivalled wireless, remote control. INFORM Control can remotely monitor, disinfect and verify multiple events including remote wireless control of valves, remote or on-site programming, quantifying valve operations, timed & dynamic hygiene purges, identification of infrequently used outlets, monitor temperatures, thermal disinfections & cold-water isolation checks on TMVs. With a selection of user friendly, configurable alarms which can be set to alert when required temperature or usage profiles are not met, thus aiding compliance. All in one user friendly online platform.

### INFORM Outlet

INFORM Outlet has been developed to accurately measure the water temperature as close as possible to the point of discharge. INFORM Outlet taps & spouts feature an in-built anti-microbial outlet and intelligent thermistors which connect directly to the INFORM platform. The range includes taps, spouts, shower towers, vanity units & ligature resistant basins. When combined with the INFORM Monitor device, INFORM Outlet provides the most accurate, remote monitoring solution.



### INFORM Custodial

Designed to overcome the specific control challenges of high security facilities, providing a safer environment for prisoners, patients and staff alike. INFORM Custodial is a networked system that provides unmatched remote control of power sockets, lighting and water in individual or multiple rooms. Options include the ability to effortlessly oversee individual rooms or exercise centralised control over an entire section, all with just a few clicks.

When used in combination with our industry leading ligature resistant sanitaryware, we can offer a complete, intelligent solution for the most demanding of environments.

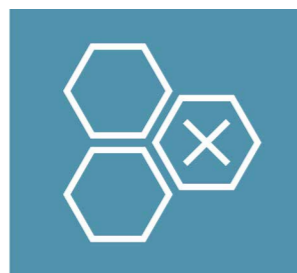


**BioMaster pioneered the use of anti-microbial additives and remains the recognised leader and most trusted supplier of anti-microbial technology for polymers textiles, paints and coatings.**

We have a range of products manufactured using BioMaster such as Multi-Spouts, anti-microbial valves, station kits and more, providing ultimate hygiene in public or semi-public environments. Our **NEW INFORM Outlet** water temperature monitoring tap features an anti-microbial outlet made with BioMaster and can be operated using our BioMaster anti-microbial valves.



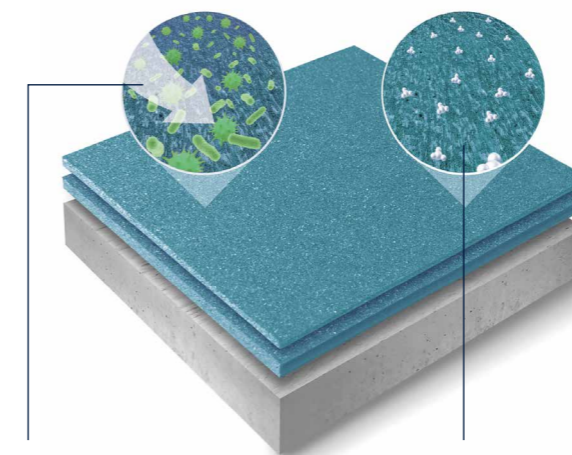
BioMaster binds to the cell wall disrupting growth.



The silver ions stop the cell from producing energy



...and interrupt the cells DNA, preventing replication



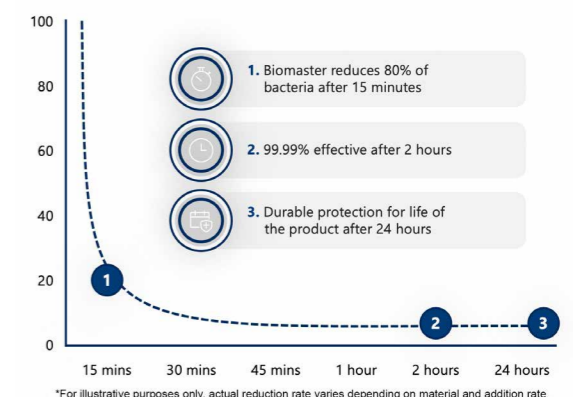
WITHOUT BIOMASTER™

Microbes settle and multiply on surfaces, causing degradation.

WITH BIOMASTER™

Silver ions actively inhibit all microbes and protects the surface.

#### BIOMASTER REDUCTION TIMES\*



\*For illustrative purposes only, actual reduction rate varies depending on material and addition rate

#### How effective is BioMaster?

Very. Polygiene BioMaster™ is proven to inhibit the growth of microbes by up to 99.99%.

#### Is BioMaster safe?

Yes. It is based on silver ion technology, recognised for centuries with no harmful effects. Polygiene is used in medical, food and water applications.

#### What's the difference between antimicrobial and antibacterial?

An antimicrobial inhibits the growth of, or destroys harmful microorganisms such as bacteria, fungi and moulds. An antibacterial specifically prevents the growth of bacteria.

#### Has BioMaster been tested?

Yes, repeatedly. BioMaster is tested to ISO standards. We also undertake on-going quality control tests and environmental trials.

#### How long is BioMaster effective for?

BioMaster is effective for the intended lifetime of the product it's added to. It is built-in and doesn't wear off or leach out.

#### Does BioMaster affect a product in any way?

No. You can't see, smell or even taste BioMaster.

#### Can a BioMaster-treated polymer be recycled?

Yes. It can be recycled effectively without any complications

# Project references

## HEATHROW AIRPORT

The trusted partner for Europe’s busiest, and Britain’s largest airport. KWC DVS takes centre stage as the preferred choice for washrooms throughout the iconic Queen’s Terminal. This prestigious partnership showcases the innovation and reliability engineered into every KWC DVS product.

Our advanced water management systems go beyond traditional solutions. We offer remote, wireless control of solenoid valves for maximised efficiency, along with real-time monitoring of water usage and temperature. This ensures optimal performance and prioritises water safety. Furthermore, our systems provide complete data verification, improving compliance in even the most demanding environments with high footfall.

KWC DVS - Proven to perform under pressure, empowering you to manage water systems efficiently and safeguard the well-being of millions of users.



## BELFAST CITY HOSPITAL

The Belfast City Hospital located in Northern Ireland, is a 900-bed modern University Teaching Hospital providing local acute services and key regional specialities. Designed to the highest building and infection control standards. Medi-10 autoclavable spouts have been installed to provide the ability to carry out and monitor hygiene purges in conjunction with our intelligent water management system.

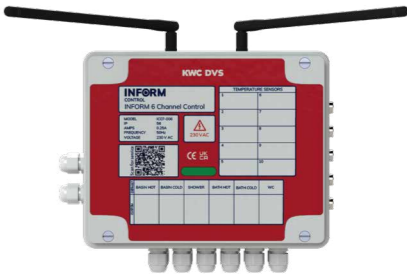
The autoclavable design of the Medi-10 spout provides the on-site team with the ability to easily disinfect the outlets away from the ward, whilst minimising downtime. The Medi-10 range also includes the functionality to attach point of use filters as required. Coupled with our intelligent water management system, the Trust can control valves, monitor temperatures, see valve counts, set timed hygiene purges and identify infrequently used outlets etc. All events are monitored, verified and form part of the extensive range of management information available.

## AVON & WILTSHIRE MENTAL HEALTH PARTNERSHIP TRUST (AWP)

AWP provides healthcare for people with serious mental illness, learning disabilities and autism in inpatient and community based settings. Servicing a population of around 1.8 million across Bath and North East Somerset (BaNES), Swindon and Wiltshire, and Bristol, North Somerset, and South Gloucestershire.

AWP specified INFORM Control to allow them to control, monitor, disinfect and verify multiple events including remote wireless control of valves, remote or on-site programming, quantifying valve operations, timed & dynamic hygiene purges, identification of infrequently used outlets, monitoring temperatures, thermal disinfections & cold-water isolation checks on TMVs. With an easy to use online platform with configurable alarms highlighting when temperature or usage profiles are not met, thereby aiding compliance.

AWP’s successful implementation of INFORM Control demonstrates the power of advanced water management solutions. By prioritising efficiency, safety, and compliance, INFORM Control empowers AWP to deliver exceptional service to their clients and ensure the well-being of building occupants.



INFORM 6 Channel Control Box

## UNIVERSITY OF ST ANDREWS

The University of St Andrews, ranked the top university in the UK\* for the second consecutive year, has recognised the significant benefits of INFORM.

INFORM’s real-time data and automated safeguards empower the university to create a safer and more secure environment for staff and students, ultimately fostering well-being. Understanding the limitations of guesswork, INFORM provides clear evidence for confident decision-making, replacing assumptions with data-driven insights.

*\*The University of St Andrews is the top university in the UK for the second year, according to The Guardian University Guide 2024. And the number one university in the UK, according to The Times and Sunday Times Good University Guide 2024.*





**INFORM**  
MONITOR

# Real-time temperature monitoring

Safeguard your water system with INFORM Monitor: Real-time monitoring for complete control

**Maintaining a safe water supply in complex building systems can be challenging.** Traditional methods often rely on manual temperature checks, which can be time-consuming, cause disruption, be prone to human error and lack real-time data. This can lead to delays in identifying problems, increasing the risk of bacterial outbreaks, scalding and even frozen pipes.



**KWC DVS Inform presents a smarter solution.** This innovative system utilises **24/7 real-time temperature monitoring** to deliver continuous oversight of your water system assets.

## Here's how Inform empowers you:

- **Accurate & Reliable Data:** INFORM sensors constantly monitor water temperatures, feeding precise data to a secure cloud-based platform accessible on any device (PC, mobile, tablet).
- **Proactive Alerts & Detailed Reports:** The intuitive dashboard provides instant alerts for potential risks and generates comprehensive reports for effective water management and compliance assurance.
- **Minimise Risks of Waterborne Threats:** INFORM aids the prevention of dangerous pathogens like Legionella and Pseudomonas, which can cause severe infections. This proactive approach safeguards public health and minimises the risk of outbreaks.
- **Reduced Maintenance & Costs:** Beyond pathogen control, INFORM optimises energy usage by identifying areas for improvement. INFORM data identifies possible issues, enabling remedial works to be completed efficiently and accurately.

## Designed for Efficiency:

- **Effortless Installation:** INFORM sensors are easy to install on existing pipework.
- **Superior Connectivity:** The system utilises the latest technology for excellent communication in any environment, urban or rural.
- **User-Friendly Interface:** The intuitive software is designed for ease of use, maximising efficiency.

## Ideal Applications:

INFORM is the perfect solution for semi-public and public buildings such as hospitals, care homes, schools, transportation hubs, workplaces, and leisure facilities, where maintaining a safe water supply is paramount.

**Benefits at a Glance:**

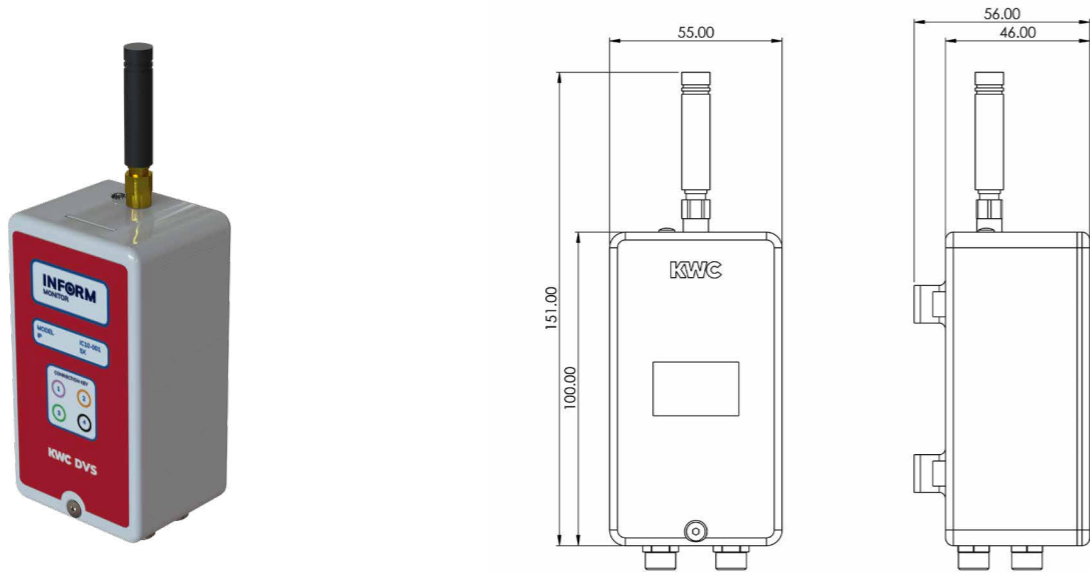
- Enhanced Legionella control and infection prevention.
- Reduced site visits through remote monitoring.
- Improved efficiency and accuracy with intelligent data management.
- State-of-the-art reporting for exportable data and compliance verification.
- Peace of mind knowing you operate at the highest safety levels.
- Shift to digital operations and management with INFORM. This easy-to-use system empowers you to prioritise water safety, ensure compliance, and optimise your buildings water system.

# Any outlet, anywhere

The INFORM Universal Monitor Kit provides intelligent, remote temperature monitoring in one simple package.

INFORM Monitor tracks water system temperatures, from anywhere in the world. Analysing trends and pinpointing areas for improvement. Make data-driven decisions to optimise efficiency and prioritise upgrades.

The INFORM Universal kit is suitable for any part of your water system and can be used almost anywhere e.g. taps, spouts, showers, sinks, basins, calorifiers, pipes in ducts & voids, plant rooms, on risers and much more.



The INFORM Device has a long lasting battery and does not require invasive plumbing work to install due to the nature of the clip on temperature thermistors. INFORM Monitor is retrofittable and incredibly easy to install and setup.

The INFORM Universal Kit includes all necessary parts required, as shown below, to monitor up to four different temperatures. Each Universal kit includes:

- 1 x INFORM Monitor device
- 4 x Intelligent thermistors for 15mm pipework
- 4 x Intelligent thermistors for 22mm pipework
- 4 x Thermistor cables
- 1 x Universal flexi-hose thermistor adapter
- 1 x 1st year subscription

**Effortless Onboarding:**

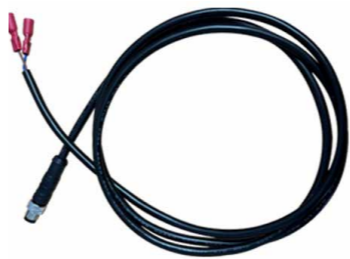
Get up and running quickly with this comprehensive kit. Our technical team will assist with the initial platform population, and a personalized one-on-one tutorial will guide you on your path to a healthy water system.



15mm Intelligent thermistor



22mm Intelligent thermistor



Thermistor cables



INFORM Monitor device



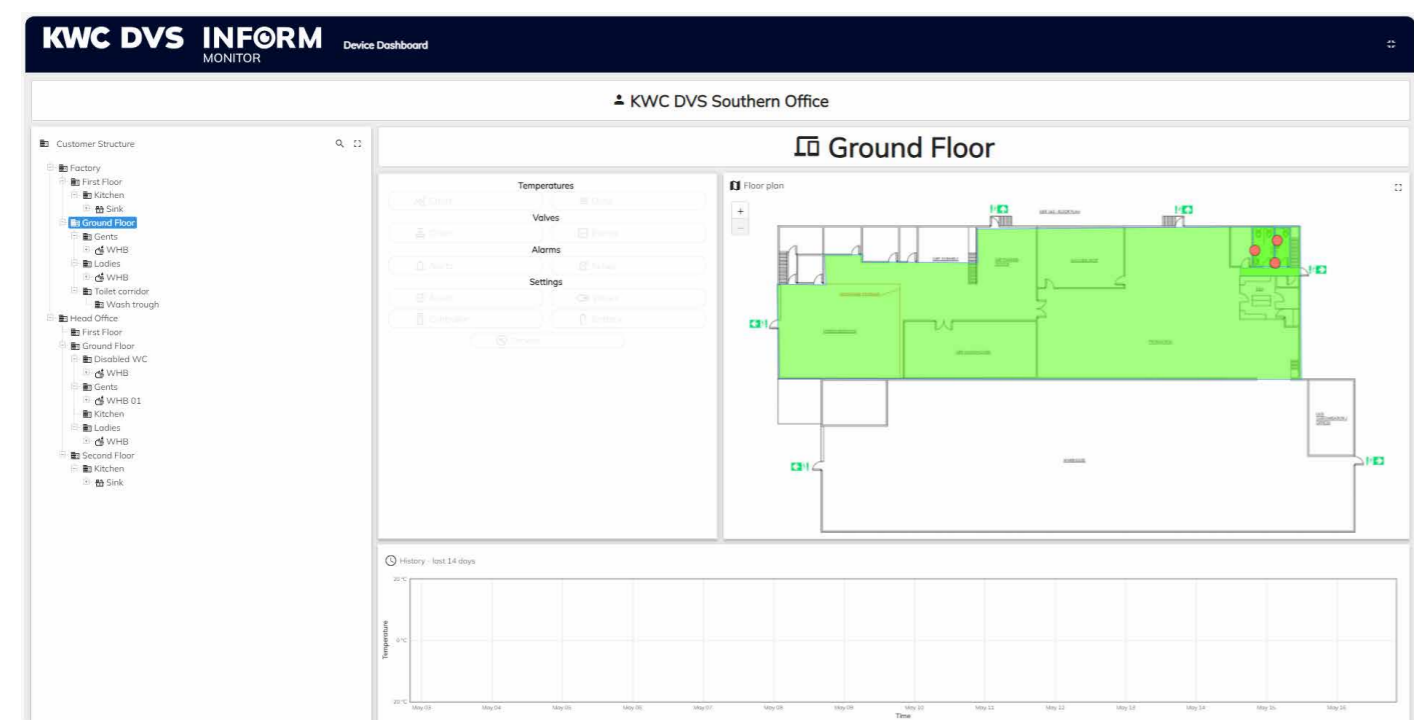
Thermistor adapter (flexi hose)

**"WITHOUT DATA YOU'RE JUST A PERSON WITH AN OPINION"**

W. Edwards Deming

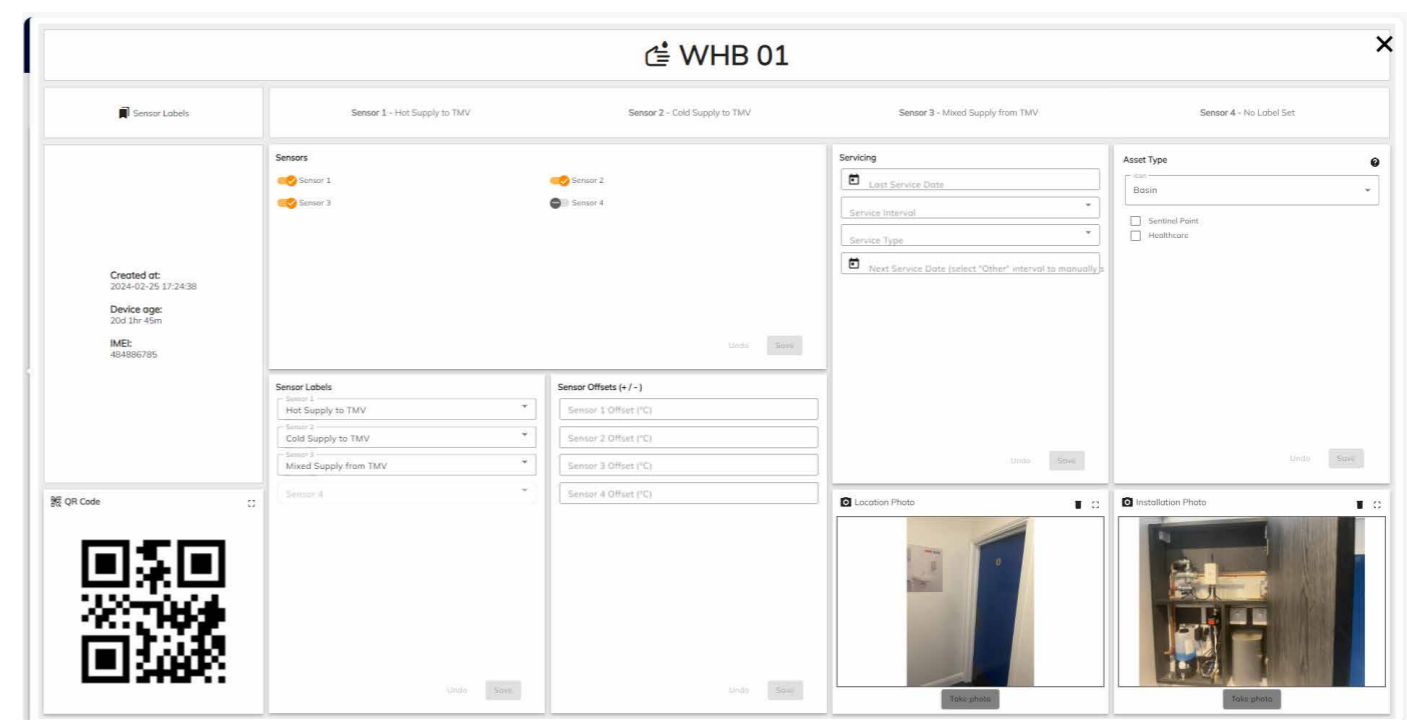
# INFORM Monitor

## Easy management with a user friendly dashboard



Dashboard

Informs digital dashboard is a user-friendly interface that provides an overview of all the assets in the building. The dashboard includes functions such as settings, alarms, data, charts, and battery life, all of which can be customised according to the specific requirements of the building or organisation.



Settings

Settings include the enabling of specific sensors, creation date of each asset and an IMEI number for traceability. Sentinel points and asset types such as washbasins, can also be customised. Keeping track of maintenance needs is easily managed by adding alerts for servicing dates and intervals. Notifications allow you to keep track when servicing is due or has been completed.

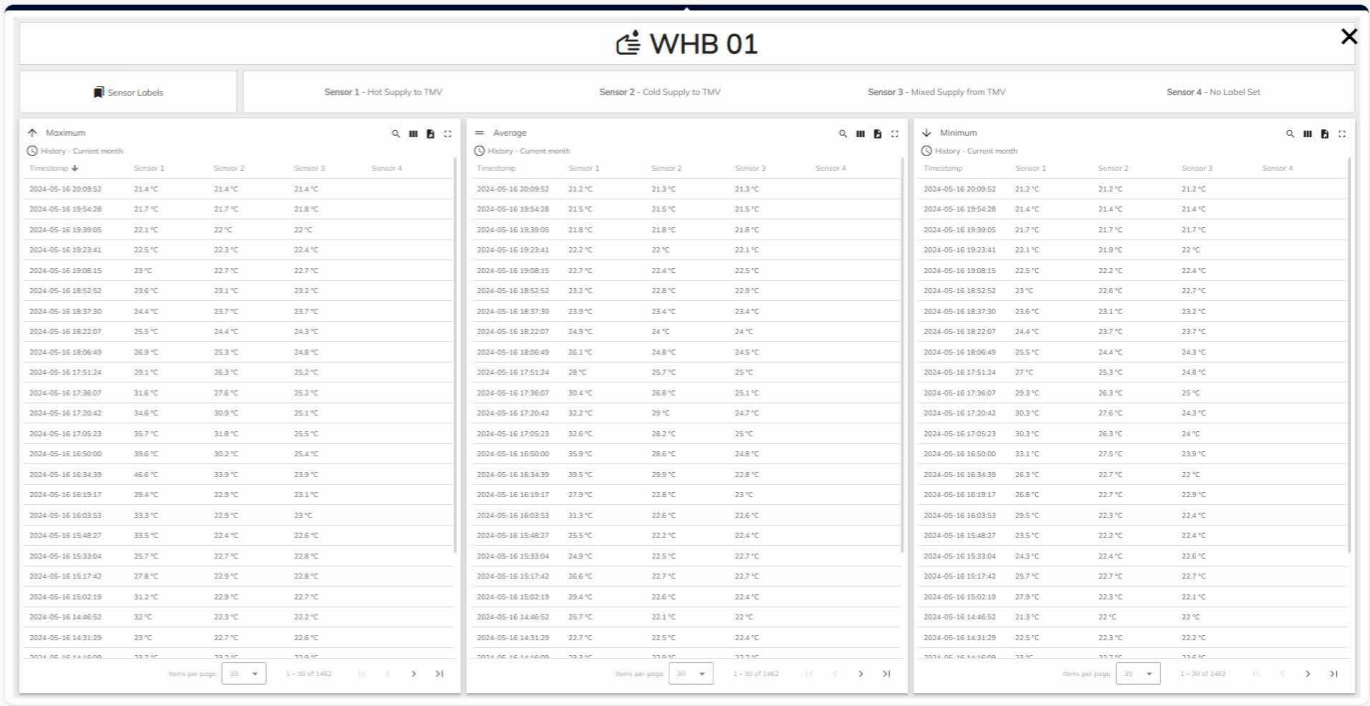
# INFORM Monitor

## Configurable alarms and extensive data at your fingertips



### Alarms

The dashboard has six different types of alarms that can be customised depending on the alerts required. Alarms include offline alert, freeze, scald, the temperature exceeded, the temperature achieved and bacterial. Alarms can be enabled and disabled and set for each sensor accordingly.

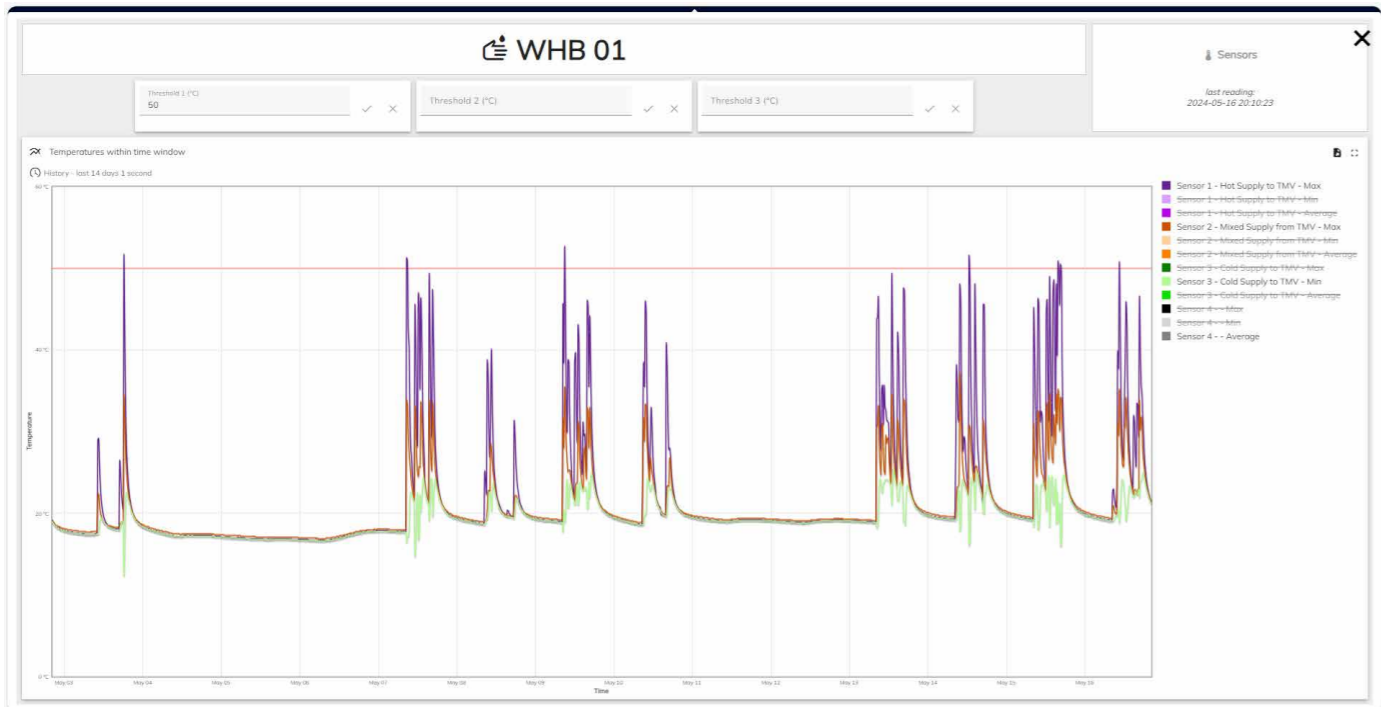


### Data

The data will display the max, avg and min temperatures for all enabled sensors within each asset. The data displays the date and time of each recording (set in alarm settings) and can be exported as CSV and Excel files to allow for more detailed analysis or record keeping.

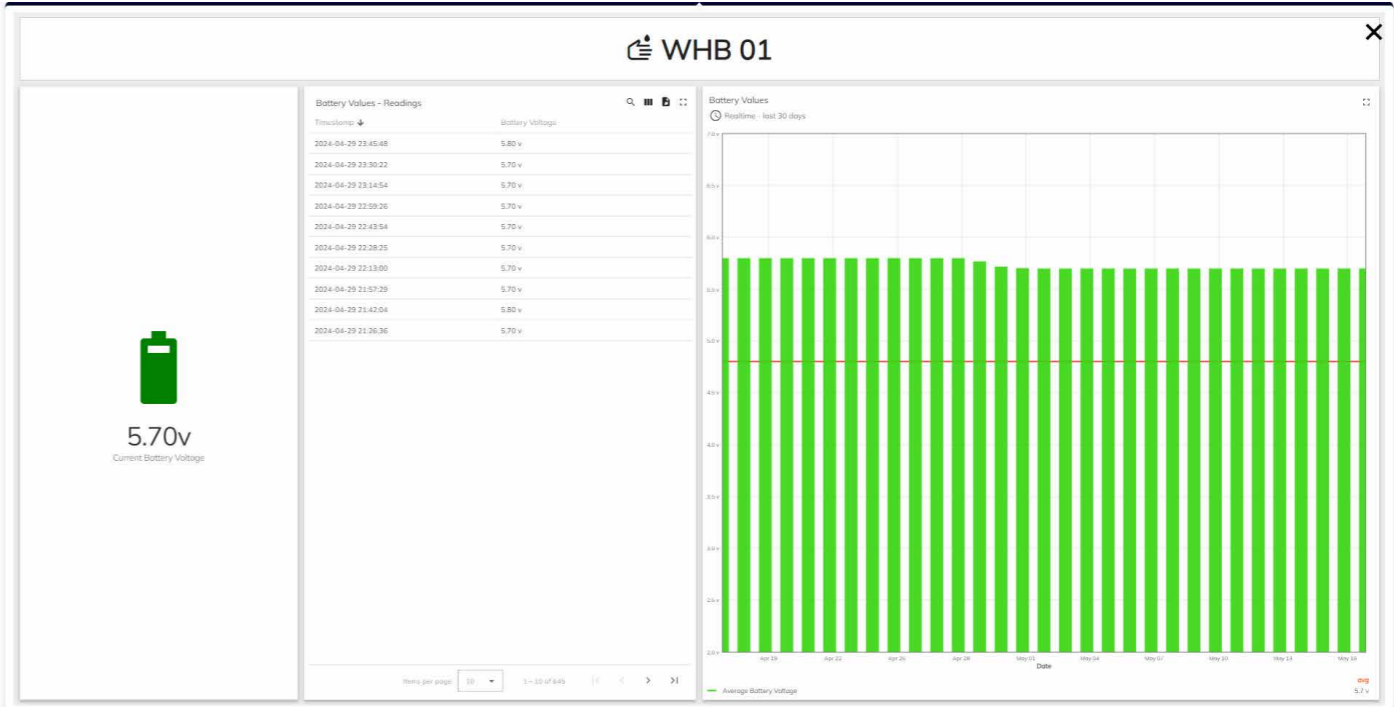
INFORM Monitor

Graphical presentation for straightforward analysis



Chart

The chart displays the temperatures within chosen time periods. The temperature charts can be adjusted accordingly on the right-hand side of the display, by simply turning the sensors on or off. As default, the temperatures will display for the last seven days.



Battery

Battery life on devices linked to each asset is recorded daily at set time intervals. The readings are shown in a chart and can be downloaded as CSV and Excel files. A default battery alarm allows time for replacement batteries to be fitted.



**INFORM**  
OUTLET

INFORM outlet

# INFORM Outlet

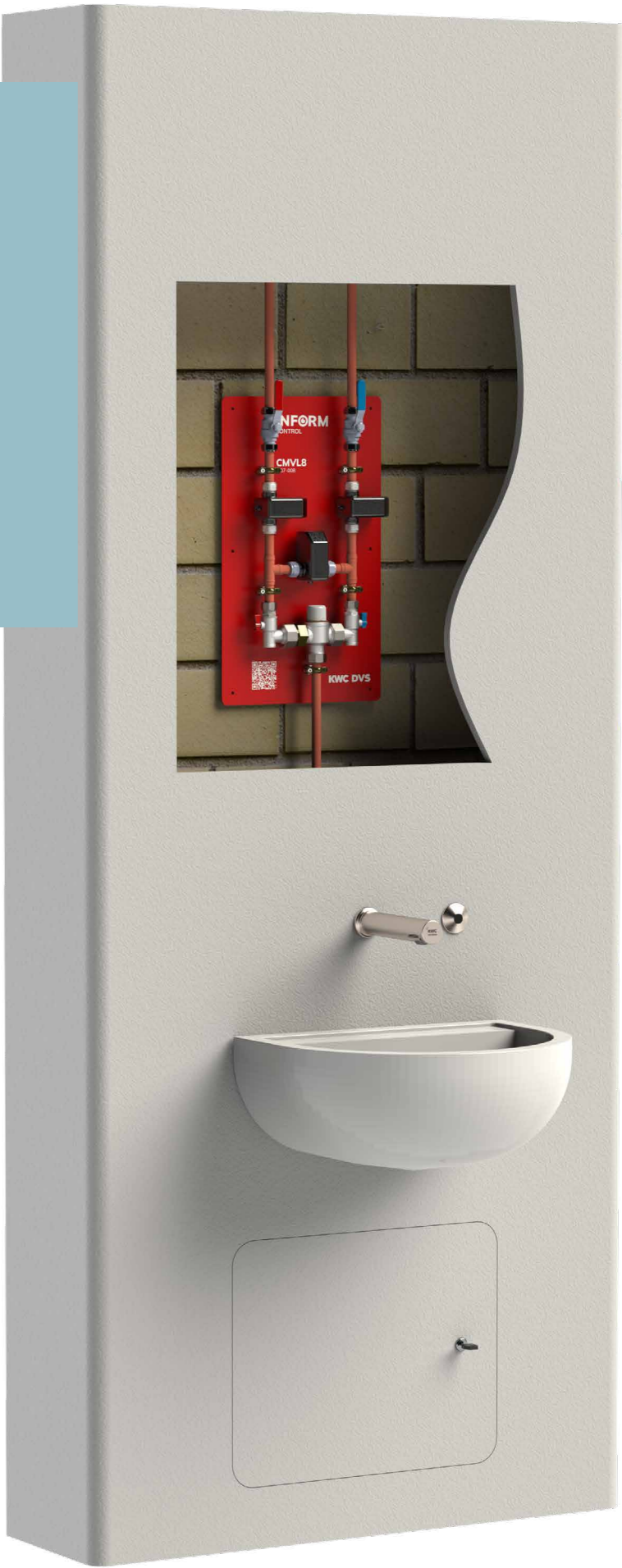
Enjoy peace of mind with INFORM Outlet, a comprehensive water management solution designed to prioritise water safety. This data seamlessly connects to the user-friendly INFORM platform, offering a complete picture of your water system empowering informed decision making.

INFORM Outlet has been developed to accurately measure the water temperature as close as possible to the point of discharge. INFORM Outlet taps & spouts feature an in-built, anti-microbial outlet and intelligent thermistors which connect directly to the INFORM platform. A comprehensive product range which includes taps, spouts, shower towers, vanity units and ligature resistant basins that aid compliance and enhance water safety.



## Control, Monitor & Validate – CMVL8

Wirelessly Control thermal purges & TMV cold water isolation tests. Remotely monitor time taken for hot and cold water outlets to achieve temperatures. Verify all relevant data with granular reports. Control, Monitor & Verify your water system is safe and compliant.



INFORM Outlet

Configure your ultimate clinical wash station with INFORM

Choose from INFORM Outlet, INFORM Control and our HBN compliant clinical wash basin for the complete solution.



INFORM Outlet  
IC03-052 A45

+



INFORM Control  
IC07-008 CMVL8  
IC07-006 6CH Controller  
AC01-001 Programmer

+



Clinical wash basin RHT  
SW00-045 Basin RHT  
SW00-044 Bottle trap  
SW00-043 Hangers



INFORM Outlet  
IC02-048 190mm

+



INFORM Control  
IC07-008 CMVL8  
IC07-006 6CH Controller  
AC01-001 Programmer

+



Clinical wash basin  
SW00-042 Basin  
SW00-044 Bottle trap  
SW00-043 Hangers



INFORM Outlet  
IC02-049 240mm

+



INFORM Control  
IC07-008 CMVL8  
IC07-006 6CH Controller  
AC01-001 Programmer

+

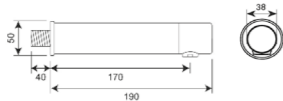


Clinical wash basin  
SW00-042 Basin  
SW00-044 Bottle trap  
SW00-043 Hangers



- A lifetime of reasons to choose a KWC DVS aftersales package
- Nationwide technical support
  - Commissioning – 5 Year on-site warranty upgrade
  - Installation – 5 Year on-site warranty upgrade
  - Servicing – Lifetime warranty upgrade

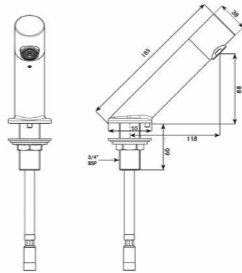
# INFORM Outlet Taps



**INFORM OUTLET 190MM**

INFORM clinical outlet manufactured in 316 stainless steel with a brushed finish. The spout design features an anti-microbial outlet and in-built intelligent thermistor which connects to our INFORM water temperature monitoring device or CMVL8 hygiene flushing unit. Remotely monitor temperatures, control the outlet, thermal purges and fail safe checks all verified. 5 litres per minute integrated flow control. (other flow rates available). Outlet projection: 170mm.

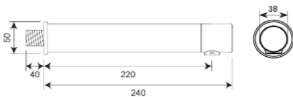
IC02-048	INFORM Outlet 190mm
<b>Mandatory accessories for Monitor only:</b>	
AC02-017	Programmable tap sensor
IC07-220	INFORM Monitor Aquarius kit TMV3 - battery
<b>OR</b>	
IC07-221	INFORM Monitor Aquarius kit TMV3 - mains
<b>Mandatory accessories for Monitor &amp; Control:</b>	
IC07-006	INFORM 6 channel control box
IC07-008	CMVL8 Control, monitor & verify



**INFORM OUTLET 240MM**

INFORM clinical outlet manufactured in 316 stainless steel with a brushed finish. The spout design features an anti-microbial outlet and in-built intelligent thermistor which connects to our INFORM water temperature monitoring device or CMVL8 hygiene flushing unit. Remotely monitor temperatures, control the outlet, thermal purges and fail safe checks all verified. 5 litres per minute integrated flow control. (other flow rates available). Outlet projection: 220mm.

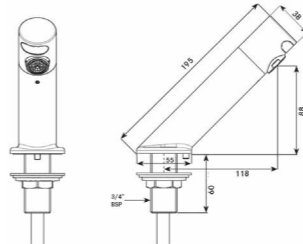
IC02-049	INFORM Outlet 240mm
<b>Mandatory accessories for Monitor only:</b>	
AC02-017	Programmable tap sensor
IC07-220	INFORM Monitor Aquarius kit TMV3 - battery
<b>OR</b>	
IC07-221	INFORM Monitor Aquarius kit TMV3 - mains
<b>Mandatory accessories for Monitor &amp; Control:</b>	
IC07-006	INFORM 6 channel control box
IC07-008	CMVL8 Control, monitor & verify



**INFORM OUTLET A45 - WALL MOUNTED SENSOR**

INFORM Outlet manufactured in 316 stainless steel with a brushed finish. The spout design features an anti-microbial outlet and in-built intelligent thermistor which connects to our INFORM water temperature monitoring device. Remotely monitor temperatures, control the outlet, thermal purges and fail safe checks all verified. 5 litres per minute integrated flow control. (other flow rates available). Outlet projection: 118mm.

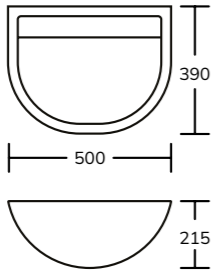
IC03-052	INFORM Outlet A45 - wall mounted sensor
<b>Mandatory accessories for Monitor only:</b>	
AC02-017	Programmable tap sensor
IC07-220	INFORM Monitor Aquarius kit TMV3 - battery
<b>OR</b>	
IC07-221	INFORM Monitor Aquarius kit TMV3 - mains
<b>Mandatory accessories for Monitor &amp; Control:</b>	
IC07-006	INFORM 6 channel control box
IC07-008	CMVL8 Control, monitor & verify



**INFORM OUTLET A45 - INTEGRATED SENSOR**

INFORM Outlet manufactured in 316 stainless steel with a brushed finish. The spout design features an anti-microbial outlet and in-built intelligent thermistor which connects to our INFORM water temperature monitoring device. Remotely monitor temperatures, control the outlet, thermal purges and fail safe checks all verified. 5 litres per minute integrated flow control. (other flow rates available). Outlet projection: 118mm.

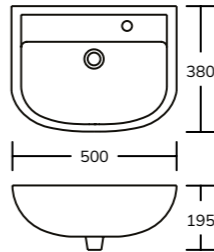
IC03-012	INFORM Outlet - Integrated sensor
<b>Mandatory accessories:</b>	
IC07-220	INFORM Monitor Aquarius kit TMV3 - battery
<b>OR</b>	
IC07-221	INFORM Monitor Aquarius kit TMV3 - mains
<b>Complimentary accessories:</b>	
SW00-045	Wall hung clinical basin 500mm RH tap hole
SW00-043	Hangers & waste adaptor
SW00-044	1 1/4" Plastic bottle trap



**WALL HUNG CLINICAL BASIN 500MM**

Clinical wall hung basin, manufactured from Vitreous china with an alpine white finish. Designed without tap holes and overflow. Back outlet for increased infection prevention.

HBN & HTM Compliant	
Dimensions: 500 x 215 x 390mm	
SW00-042	Clinical basin
<b>Mandatory accessories:</b>	
SW00-044	1 1/4" Plastic bottle trap
SW00-043	Hangers and waste adaptor

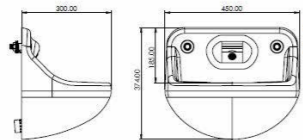


**WALL HUNG CLINICAL BASIN WITH TAP HOLE 500MM**

San Ceram wall hung basin manufactured from Vitreous china with an alpine white finish. Designed with a right hand tap hole and is ideal where space is a constraint. Supplied without overflow, complete with fixings for installation.

Doc M, HBN & HTM Compliant	
Dimensions: 500 x 195 x 380mm	
SW00-045	Clinical basin with right hand tap hole
<b>Mandatory accessories:</b>	
SW00-044	1 1/4" Plastic bottle trap
SW00-049	1 1/4" Strainer waste - unslotted

# Ligature resistant basins



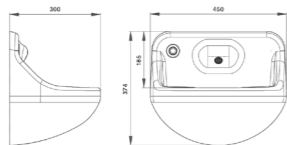
**SAFE ENSUITE DUAL SENSOR SINGLE OUTLET BASIN**

Safe Ensuite basin, manufactured from GRP high performance composite material. Designed and tested to be vandal-proof and avoid ligature points wherever possible. The techniques employed to construct these basins are used very successfully in the field of ballistic armour manufacturing, this results in unrivalled impact resistance. A high-grade non-porous polyester gel coat surface specially formulated to resist chemicals and ultraviolet rays comes as standard.

Control, sensors and TMV3 required  
Dimensions: 450 x 374 x 300mm

**VR01-090** Dual sensor, single outlet

INFORM enabled; additional parts and subscription required to activate wireless temperature monitoring and using data.



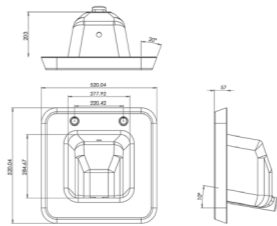
**SAFE ENSUITE SINGLE SENSOR SINGLE OUTLET BASIN**

Safe Ensuite basin, manufactured from GRP high performance composite material. Designed and tested to be vandal-proof and avoid ligature points wherever possible. The techniques employed to construct these basins are used very successfully in the field of ballistic armour manufacturing, this results in unrivalled impact resistance. A high-grade non-porous polyester gel coat surface specially formulated to resist chemicals and ultraviolet rays comes as standard.

Control, sensors and TMV3 required  
Dimensions: 450 x 374 x 300mm

**VR01-092** Single sensor, single outlet

INFORM enabled; additional parts and subscription required to activate wireless temperature monitoring and using data.



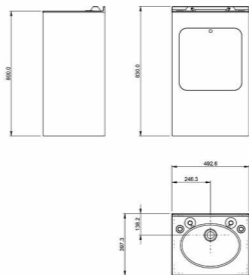
**IN-WALL BASIN**

Safe Ensuite in wall basin, manufactured from GRP high performance composite material. Designed and tested to be vandal-proof and avoid ligature points wherever possible. The techniques employed to construct these basins are used very successfully in the field of ballistic armour manufacturing, this results in unrivalled impact resistance. A high-grade non-porous polyester gel coat surface specially formulated to resist chemicals and ultraviolet rays comes as standard.

Requires sensors and station kit  
TMV3 required  
Dimensions: 465 x 210 x 305

**VR01-085** In-wall basin

INFORM enabled; additional parts and subscription required to activate wireless temperature monitoring and using data.



**HIGH-SECURITY VANITY BASIN WITH TMV3**

Floor standing Trespa vanity unit with integrated GRP wash basin. The basin is ligature resistant and has been designed and tested to be vandal-proof and avoid ligature points wherever possible. The techniques employed to construct these basins are used very successfully in the field of ballistic armour manufacturing, this results in unrivalled impact resistance. A high-grade non-porous polyester gel coat surface specially formulated to resist chemicals and ultraviolet rays comes as standard. Designed pre-assembled for easy installation with TMV spouts and controls included in kit form.

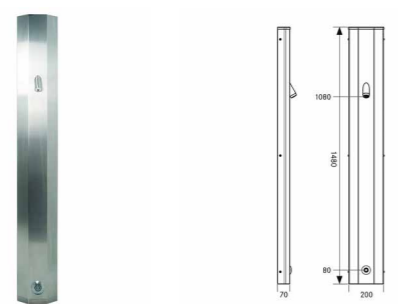
Available with wave-on or tactile operation  
Dimensions: 492 x 830 x 397mm

**VR01-120** High-Security vanity basin with 2 taps and 2 sensors  
**VR01-121** High-Security vanity basin with 1 tap and 2 sensors  
**VR01-122** High-Security vanity basin no outlets

**Complimentary accessories:**  
**VR01-130** Vandal resistant vanity cabinet

INFORM enabled; additional parts and subscription required to activate wireless temperature monitoring and using data.

# INFORM Outlet showers with remote monitoring and control



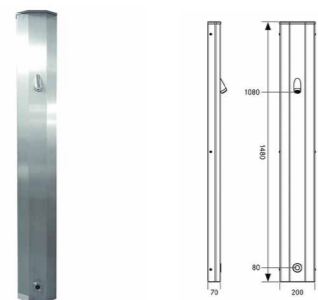
**INFORM OUTLET CEILING HEIGHT SHOWER TOWER - TACTILE**

INFORM Outlet Ceiling height shower tower, manufactured from 316 stainless steel with a brushed finish. Features an anti-microbial outlet and in-built intelligent thermistors which connect to our INFORM system. Remotely monitor temperatures, control the outlet, and collate usage data. Ligature-resistant design with concealed pipework, and in-built TMV3 for high-security applications. Designed to fit flush against the ceiling. Tactile switch is positioned 1 metre from floor level at standard 2.4metre ceiling height.

Built-in TMV3  
Tactile switch operation  
Dimensions: 200 x 1080 x 70mm  
Available in White

IC04-005	Shower tower
<b>Mandatory accessories:</b>	
IC07-006	INFORM 6 channel control
<b>OR</b>	
IC07-012	INFORM 12 channel control

INFORM enabled; additional parts and subscription required to activate wireless temperature monitoring and using data.



**INFORM OUTLET CEILING HEIGHT SHOWER TOWER - SENSOR**

INFORM Outlet Ceiling height shower tower, manufactured from 316 stainless steel with a brushed finish. Features an anti-microbial outlet and in-built intelligent thermistors which connect to our INFORM system. Remotely monitor temperatures, control the outlet, and collate usage data. Ligature-resistant design with concealed pipework, and in-built TMV3 for high-security applications. Designed to fit flush against the ceiling. Sensor is positioned 1 metre from floor level at standard 2.4metre ceiling height.

Built-in TMV3  
Sensor operation  
Control box required  
Dimensions: 200 x 1080 x 70  
Available in White

IC04-006	Shower tower
<b>Mandatory accessories:</b>	
IC07-006	INFORM 6 channel control
<b>OR</b>	
IC07-012	INFORM 12 channel control

INFORM enabled; additional parts and subscription required to activate wireless temperature monitoring and using data.

## INFORM OUTLET

**Shower Safety Redefined with INFORM Technology**

Elevate your showers to the apex of safety and effortless control with our stainless-steel shower towers featuring the INFORM enabled shower head. This innovative head boasts an advanced anti-microbial design, promoting hygiene and peace of mind. Integrated intelligent thermistors seamlessly connect with INFORM, providing real-time temperature monitoring, usage data, and customisable alarms.

KWC DVS INFORM empowers informed action. Should pre-set temperature parameters fall outside safe ranges, the system notifies you, allowing for timely and efficient intervention. This translates to complete confidence in your water safety standards, all within seconds.





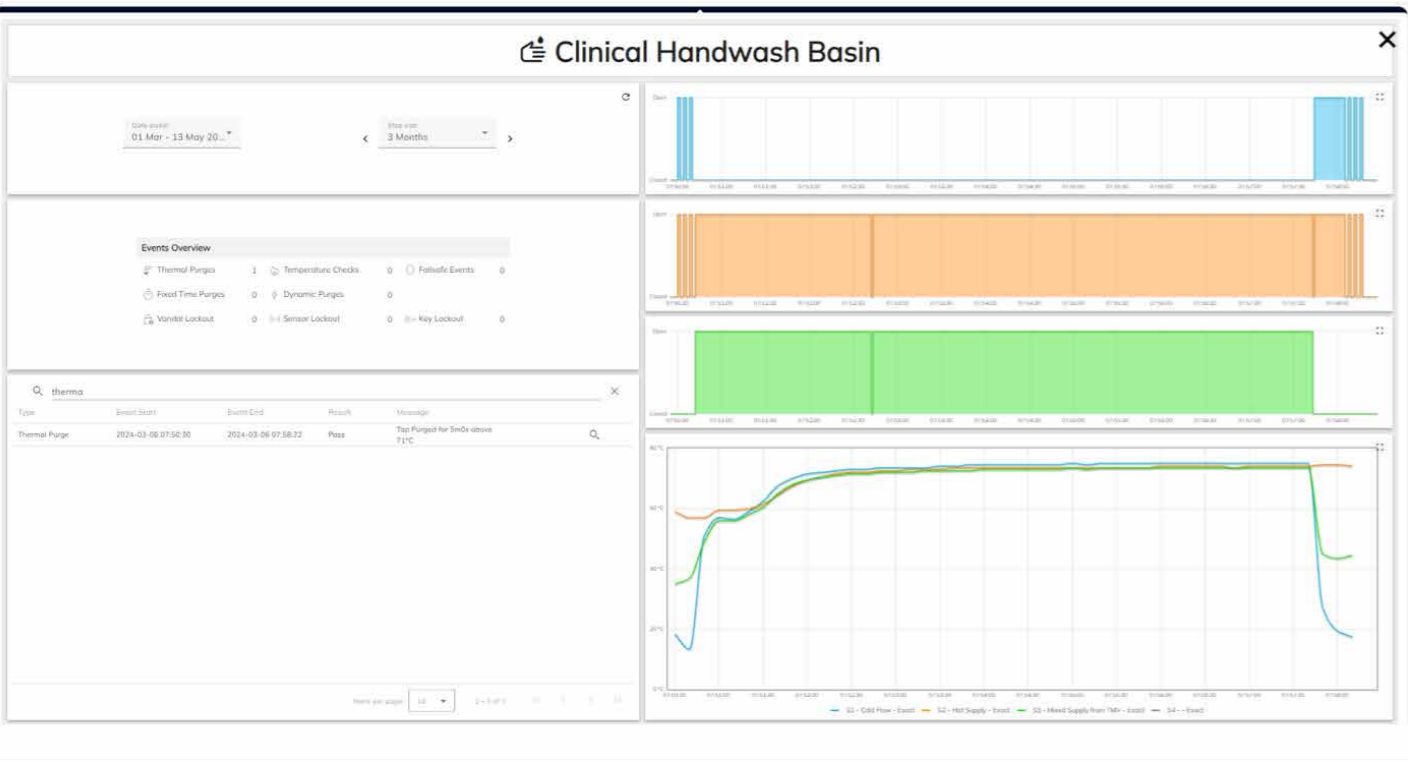
**INFORM**  
CONTROL

# INFORM Control

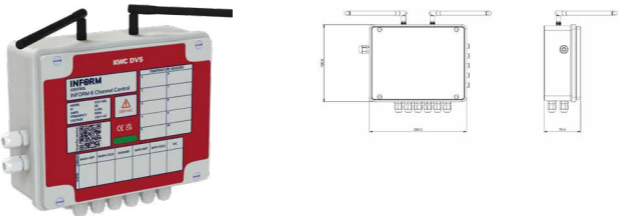
## Stay in control, stay informed

INFORM Control allows you to understand the behaviour of your water system, remotely implement changes and see the impact in real-time, in the comfort of wherever you happen to be.

A range of products that provide unrivalled wireless, remote control. INFORM Control can remotely monitor, disinfect and verify multiple events including remote wireless control of valves, remote or on-site programming, quantifying valve operations, timed & dynamic hygiene purges, identification of infrequently used outlets, monitor temperatures, thermal disinfections & cold-water isolation checks on TMVs. With a selection of user friendly, configurable alarms which can be set to alert when required temperature or usage profiles are not met, thereby aiding compliance. Easy to use online platform packed with features.



A unique function of the INFORM CMVL8 allows a thermal purge through the TMV and the outlet (e.g. Clinical Wash Hand Basins, Showers & other outlets) to be carried out safely. As with all other events, the details of the opening & closing timings and sequences along with a granular temperature profile chart and a pass or fail result provides complete verification of the event having taken place.



**INFORM 6 CHANNEL CONTROL BOX**

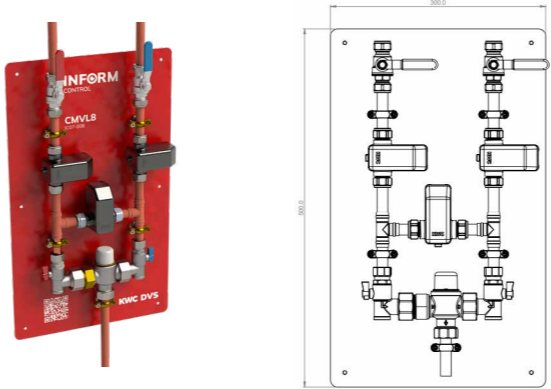
Following the established VR07-020 Multi-Channel Control box the Inform 6 Channel Control box gives the option of unprecedented levels of control and enhanced user options including: Remote wireless control of valves, temperature monitoring, remote or on site programming, valve counts, valve opening and closing timestamps, timed hygiene purges and identification of infrequently used outlets etc. All events are monitored, verified and form part of the extensive range of management information available via the Inform platform 24/7. In addition, user friendly, editable alarms can be set to aid compliance.

When used with the CMVL8 there are the additional functions of Thermal purges and TMV cold water isolation checks.

Suitable for use with 12 volts sensors

**IC07-006** 6 channel control box

To enable all functions an Inform subscription will be required.



**CMVL8 CONTROL, MONITOR & VERIFY**

The CMVL8 is designed to work in conjunction with the Inform enabled Multi Channel control boxes. Complete with full bore 15mm compression isolation valves, check valves, anti-microbial solenoid valves, temperature sensors and a separate thermostatic mixing valve ready for easy installation.

CMVL8 allows you to carry out Thermal purges through both the outlet & TMV and cold water isolation tests without the need to remove IPS panels or manually operate valves. CMVL8 will also provide detailed, reports with date & time, temperatures etc. to ensure you have the information you need to effectively manage the safety of your water system.

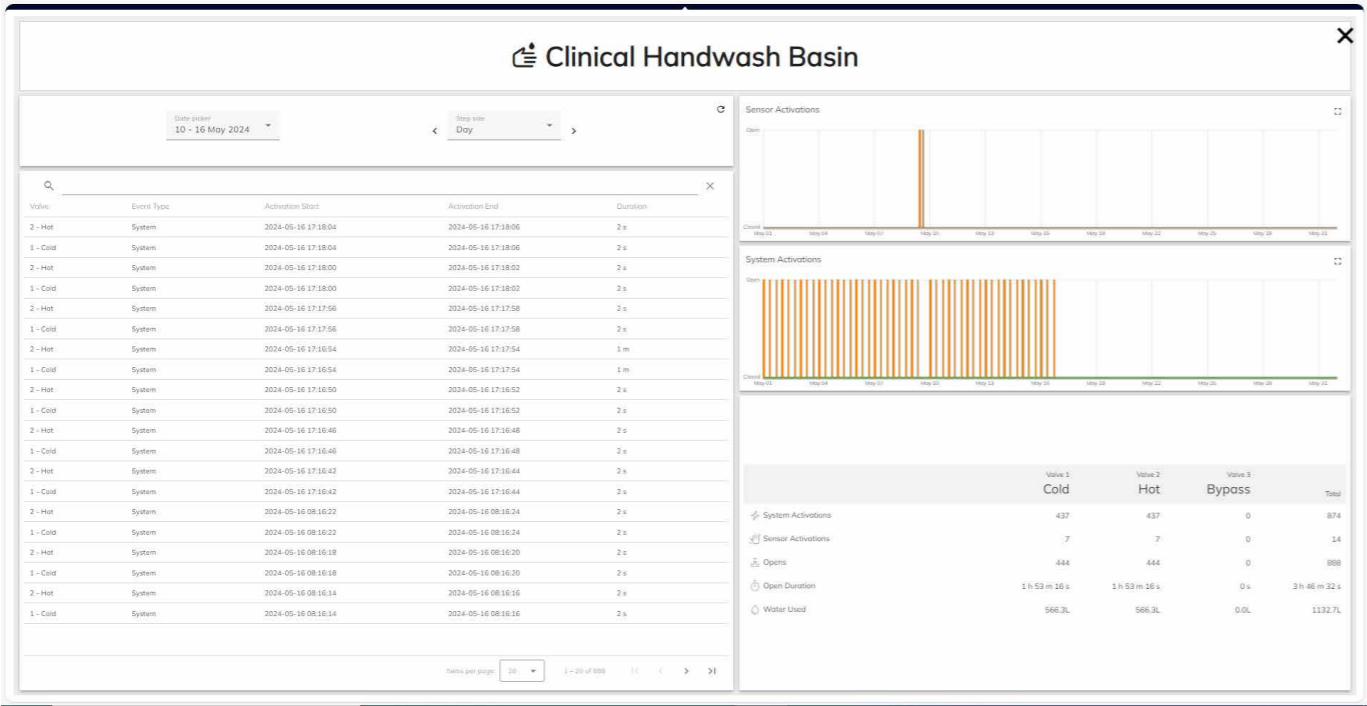
In addition CMVL8 can provide verification that hot taps are  $\geq 50^{\circ}\text{C}$  within one minute ( $55^{\circ}\text{C}$  in healthcare premises) and cold taps are below  $20^{\circ}\text{C}$  within two minutes of running the cold tap as required by HSG274 Part 2

Dimensions: 254 x 200 x 97mm

**IC07-008** CMVL8 Control, monitor & verify

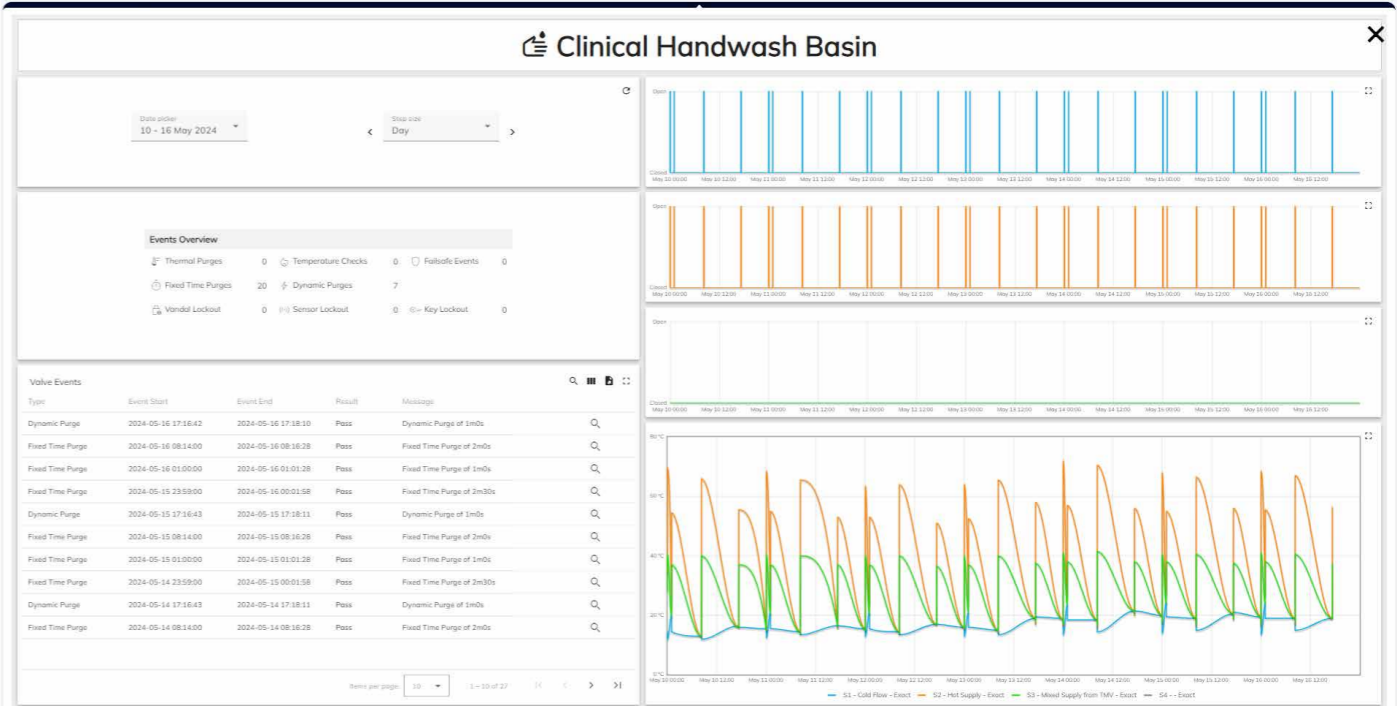
INFORM Control

# Your water system, safely controlled and monitored



Valve Chart

The valve chart dashboard shows a timestamp for each valve opening and closing & displays the time the valve was open. In addition it uses this information combined with the flow rate to indicate the volume of water used during the selected period. It also shows the total number of activations, which are split between user and system events (programmed events such as purges and much more).

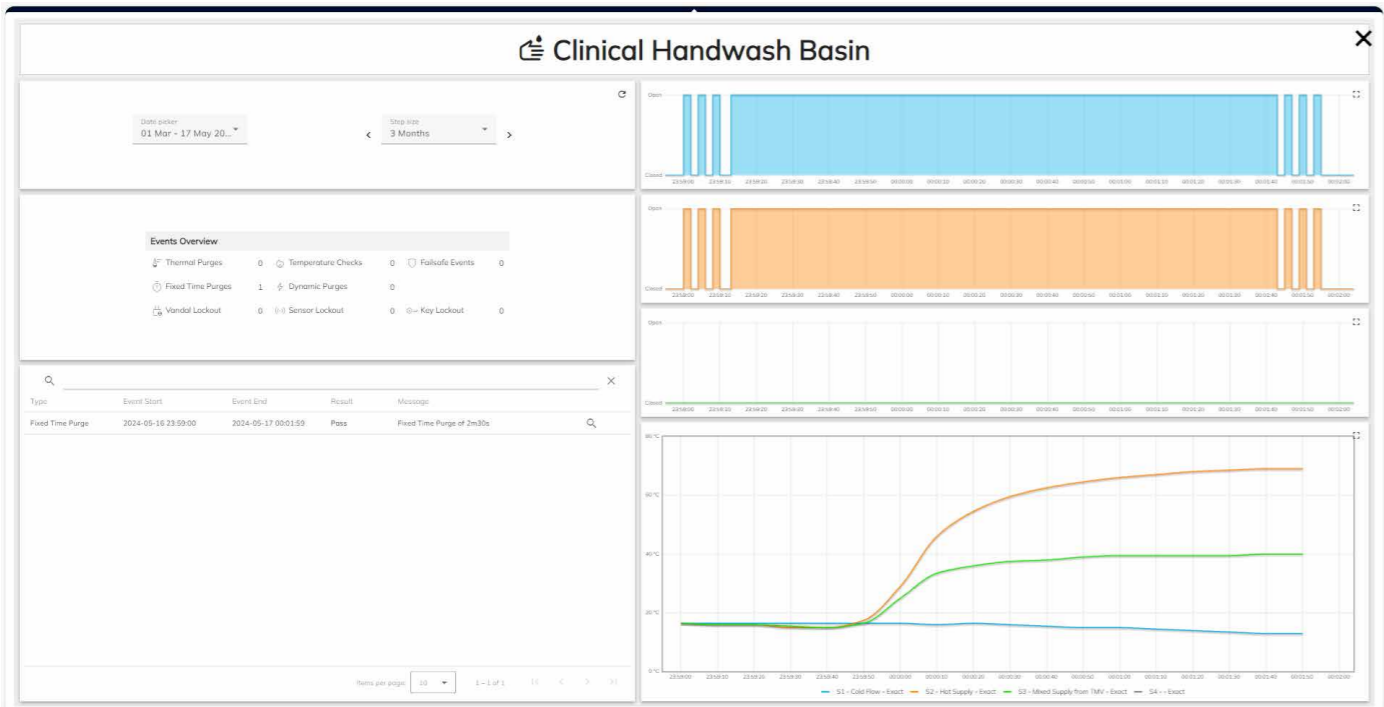


Valve Events

The valve events screen gives an overview of all the events with numbers of how many of each have occurred within the selected timeframe. It provides a detailed (exportable) list of all events, showing each as a pass or a fail complete with a description of what has taken place. Detailed valve opening charts and granular temperature charts are available for detailed investigation as required.

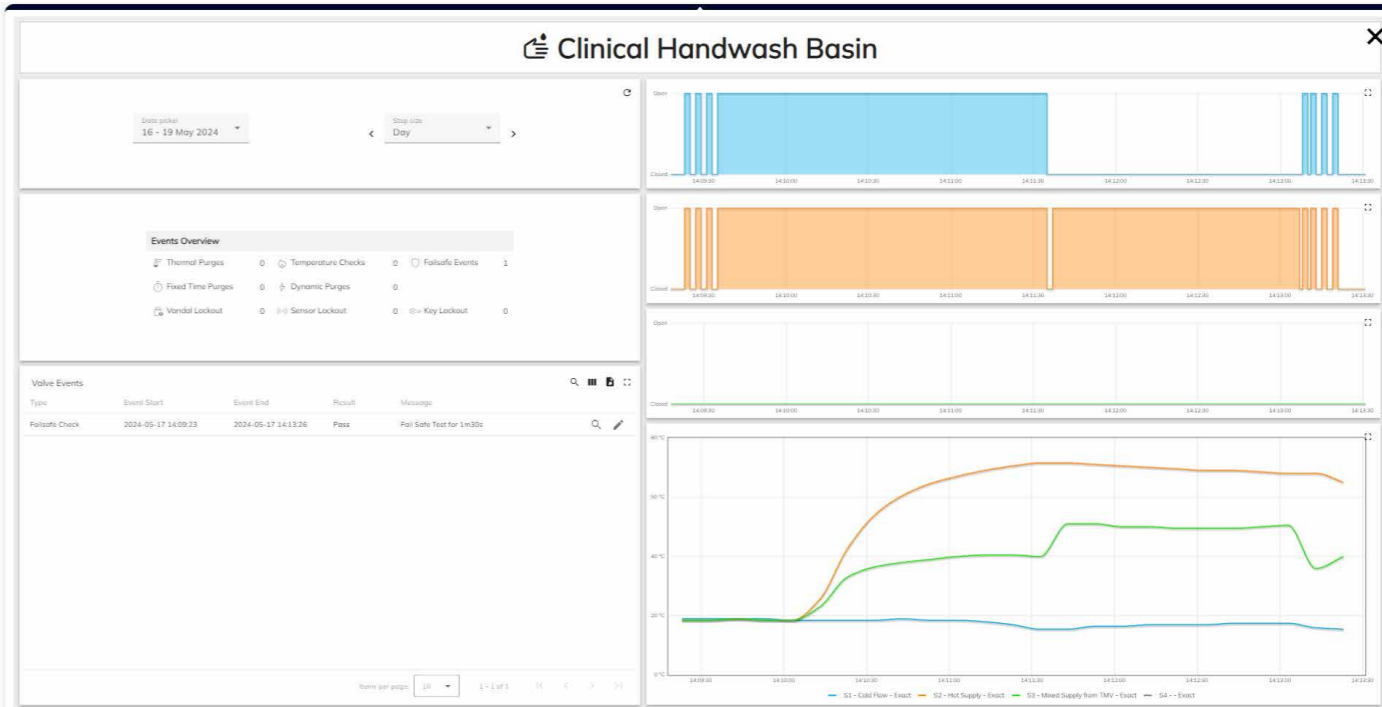
INFORM Control

# Control, Monitor, Validate



Fixed time purge

A fixed time purge allows purges to be programmed to happen at specific times. This can be particularly useful to ensure that the purge does not interfere with the smooth running of the area where it is taking place. This purge is then recorded and shown in the Valve Events, which confirms when it started & finished and what the temperature profile was during the purge.



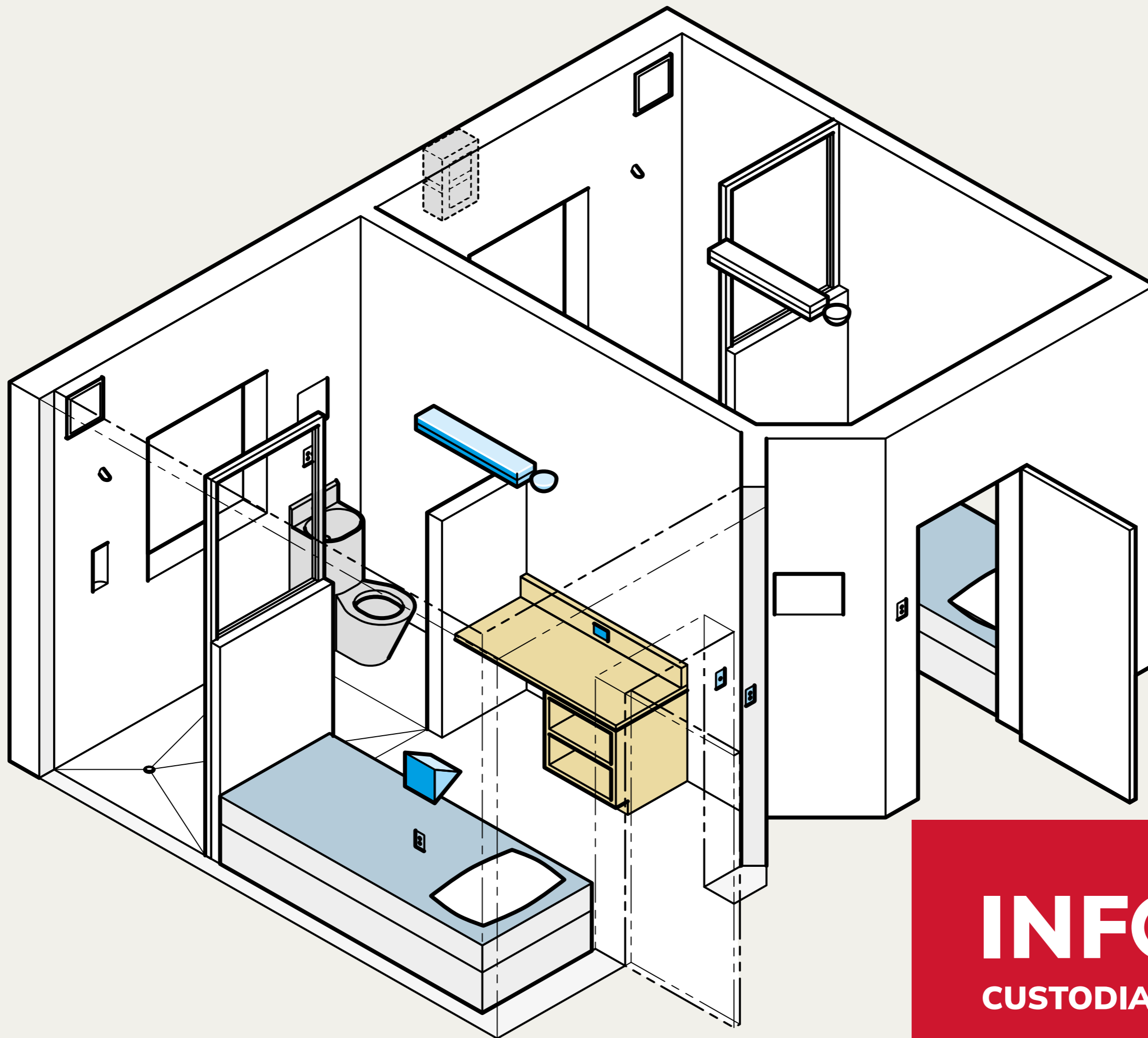
TMV Cold water isolation test (Failsafe)

The CMVL8 provides world leading technology that provides a truly unique programmable event which allows a TMV cold water isolation test to be carried out without the need to access the TMV. As with all other events, the details of the opening & closing timings and sequences along with a granular temperature profile chart and a pass or fail result provides unambiguous evidence of the event having occurred. Aiding compliance and providing the data to ensure a healthy water system.

INFORM

Product Comparison

	INFORM Monitor	INFORM 6 Channel Control Box	INFORM 6 Channel Control Box & CMVL8	INFORM Custodial	Manual Monitoring
Temperature Monitoring	✓	✓	✓	✗	✓
Remote Wireless Valve Control	✗	✓	✓	✓	✗
Remote access to data	✓	✓	✓	✓	✗
Configurable Alarms	✓	✓	✓	✗	✗
Reduced Site Visits	✓	✓	✓	✓	✗
Mains Powered	✗	✓	✓	✓	✗
Battery Powered	✓	✗	✗	✗	✗
Remote programming	✗	✓	✓	✓	✗
Onsite programming	✗	✓	✓	✓	✗
Automatic Firmware updates	✓	✓	✓	✓	✗
Valve opening and closing timestamps	✗	✓	✓	✓	✗
Fixed Time Purges	✗	✓	✓	✗	✗
Thermal Purges	✗	✓	✓	✗	✗
Dynamic Purges	✗	✓	✓	✗	✗
Live Purges	✗	✗	✗	✓	✗
Cold Water Isolation Tests	✗	✗	✓	✗	✗
Verify Hot & Cold temperatures are reached within the required time	✗	✓	✓	✗	✗
Extend or remove access rights to TV or radio	✗	✗	✗	✓	✗
Isolation of water via key-switch	✗	✓	✓	✗	✗
Remote & immediate isolation of power, light & water	✗	✗	✗	✓	✗
Change control settings for WC'S , wash hand basins and showers	✗	✓	✓	✓	✗
View trends	✓	✓	✓	✗	✗
Export data	✓	✓	✓	✗	✗



**INFORM**  
CUSTODIAL

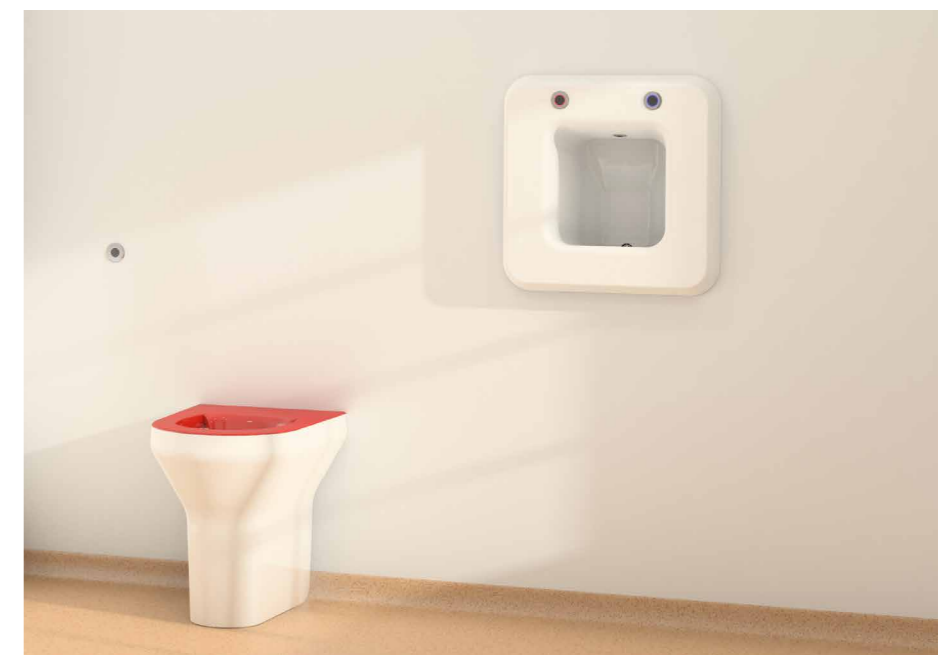


INFORM Custodial

## Leading the way in control systems for high security environments

This range of products has been developed and installed for over 20 years. INFORM Custodial gives the option to control power, light & water. The newest generation of these systems, has been designed to provide solutions to the changing administration and security needs within custodial and mental healthcare settings.

The INFORM HLI (High Level Interface) allows staff to manage individual rooms or all of the rooms under their control using a user friendly, graphical dashboard.



# Intelligent dashboard with high level interface

INFORM Custodial can manage water usage for showers, including delays, run times and recording the number of uses per day. This is ideal for high security and mental health environments as it will indicate any patterns and behaviours that may cause concern. WCs can be counted per day, along with delaying subsequent use and providing the option of full and half flushing. Basins can also be controlled similarly to WCs, measuring usage per day, delaying subsequent use and providing lockouts. Water use can be minimised by combining intelligent and practical limitations of fixture use and reliable, proven fixture selection.



INFORM Custodial can also form part of a system design using an intelligent dashboard to isolate rooms or groups of rooms, monitor usage, or perform diagnostics on the INFORM Custodial system. For details on the INFORM Custodial dashboard get in touch with our team at [kwcdvsinform.gb@kwc.com](mailto:kwcdvsinform.gb@kwc.com)

# Power, lighting and water control in high security environments

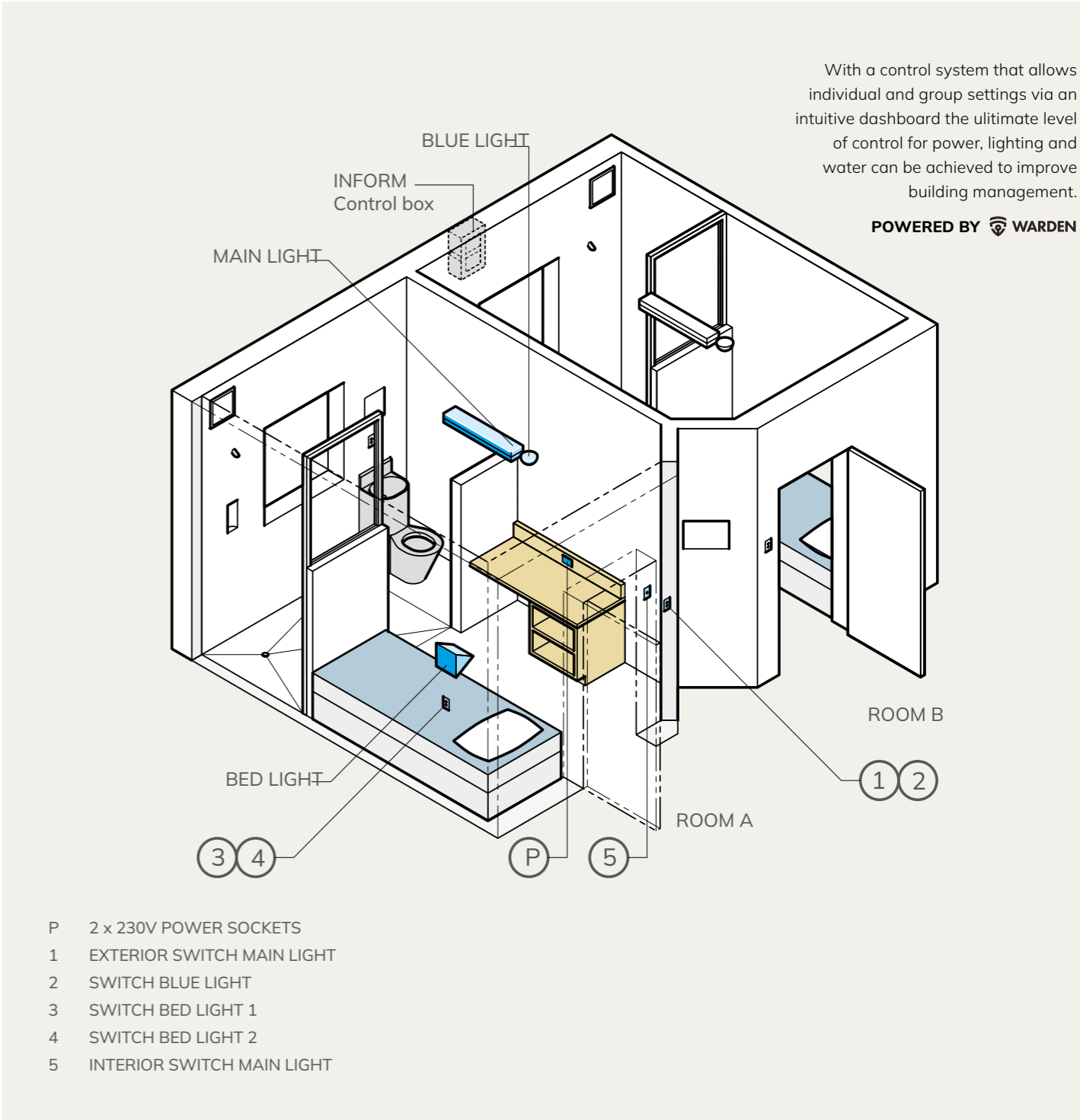
Traditionally, multiple rooms are supplied off the same circuit, and any fault affects multiple rooms. Individual or groups of rooms can be controlled using the INFORM Custodial dashboard, giving staff the ability to:

- Isolate power
- Isolate lights
- Isolate water
- Extend or remove access rights to TV or radio
- Turn lights off at specific times if required
- Provide immediate isolation of outlets remotely
- Change control settings for WCs, WHBs and Showers
- Monitor individual outlet use
- Data log information, if required
- Remote activation of outlet



INFORM Custodial is pre-loaded with site specific profiles chosen by the client. These profiles provide the desired run times, lockout times and maximum daily uses for each outlet. INFORM Custodial has lighting and power protection (RCBOs) to ensure that even the most determined will only cause local circuit isolation.

Significant savings in cabling infrastructure can be realised using the INFORM Custodial system. The localised power distribution, protection, and control can eliminate the need for separate essential/non-essential power systems to each Cell.



A single control system provides each room with the following features:

- Complete room water fixture control as per INFORM Custodial
- 230V power sockets - limited to 500 watts
- Up to 2 x room bunk lights
- 1 x main room light with internal/ external switches
- 1 x external check (blue) light switch
- RCBO lighting and power circuit protection
- Low-voltage light switch cables
- Allows staff to isolate power circuits if the occupant has radio or TV outside allowable hours or noise levels
- Reduced cabling requirement, especially if the essential and non-essential design is required
- Ability to reduce consumption to essential power supplies during power failure and re-instate when required

# Intelligent functions

INFORM Custodial consists of two enclosure boxes of the same size. The top box contains all the mains power connectors, 230V relay boards, supply protection equipment and conduit adaptors. The lower section contains the electronics for fixture control, low voltage I/O connections, and data communications. This section has power supplied directly from the top box via one of the box interconnecting conduit couplings. Each box is interconnected with short conduit couplings. If there are space constraints, they can be separated.



Health & Safety requirements often demand bedhead lights are always available for inmates. The INFORM Custodial system can be configured so that room light isolation does not affect these lights. All wiring from the INFORM Custodial to the light switches is low voltage, using a standard 2-core cable. A set of volt-free contacts are made available for third-party compliance monitoring of check blue light activations. Other lighting configurations are possible where more than two occupy a single cell.

# INFORM

**KWC DVS**

Professional

To find out more  
information about  
INFORM visit our  
website



KWC DVS | North: 01246 458900 | South: 01803 529021  
[kwcdvsinform.gb@kwc.com](mailto:kwcdvsinform.gb@kwc.com) | [kwcdvssales@kwc.com](mailto:kwcdvssales@kwc.com) | [www.dartvalley.co.uk](http://www.dartvalley.co.uk)