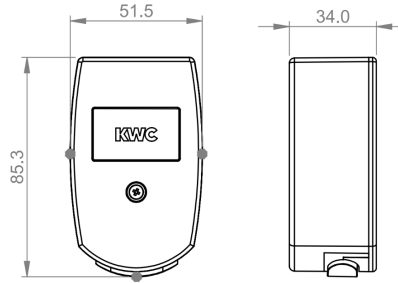
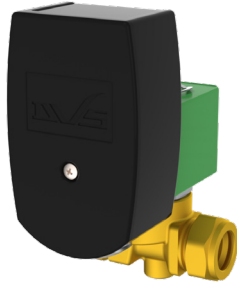


KWC

Aquari-save



AC04-046

Aquari-save

The Aquari-Save is a Programmable valve assembly which grants the user full control over the release of water. This aids in water saving by reducing unnecessary water release outside standard facility use through extensive programmable options.

Technical data

Material	Black ABS
Gross weight	0.23kg
Type of mounting	Direct to valve
Operation type	Programmable sensor

Adjustable settings

Day of the week	Mon - Sun
First flush	00:00 - 23:45 (15min Increments)
Last flush	00:00 - 23:45 (15min Increments)
Number of flushed	0 - 40
Run time	Default: 20 secs Options: 2, 5, 10, 15, 20, 30, 40, 50, 60 seconds 2, 3, 4 & 5 minutes