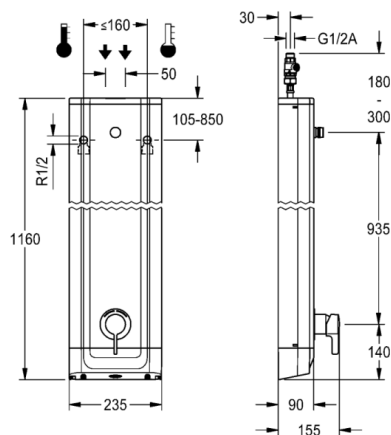


F5L Mix stainless steel shower panel

MODEL RANGE: F5 | F5LM2022 | 210.0590.341

Showers | Manual shower



F5L Mix shower panel made of stainless steel for wall mounting with DN 15 single lever mixer and connecting nozzles for the shower head. For connection to hot and cold water. Shower valve with integrated mixing cartridge and mechanism for an optional water hygiene unit for automatic water hygiene flushing, program-controlled thermal disinfection (additional bypass solenoid-operated flush valve cartridge required) and storage of statistical data. Mixing cartridge with ceramic disc technology and thermostatic protection from scalding which is permanently set to 43°C, and with safety switch-off in the event of a failure in the cold water supply. All-metal construction, visible parts high-polished or chrome-plated. Connecting nozzles for the required additional DN 15 Franke shower head with pre-fitted flow regulator 9.0 l/min. Housing made of stainless steel with raised function surface and plastic cover caps. Connecting hoses with lockable water volume control with backflow preventer and strainer.

Dimensions of housing 235 x 1160 x 90 mm (W x H x D)

Shower head to be ordered separately.

Technical data	
Overall depth	90.00 mm
Overall height	1,160.00 mm
Overall width	235.00 mm
Tailor made	No
Type of mounting	Wall mounting
Type of operation	Manual operation
Diameter nominal	DN 15
Inlet size	G-1-2-A
Material casing	Stainless steel
Material fitting	Brass
Type of mixing	With thermostat / mixer
Sound insulation	No
Surface finish fitting	Chromed
Minimum flow pressure	1.50 bar
Volume flow rate at 3 bar	0.15 liter per second
Adjustable flow time	No
Functional principle	Manual
Protective shutdown	No
Thermal disinfection	Prepared for automatic thermal disinfection
Additional connections	No
Circulation	No
Connection with pay water dispenser	Not possible
Shower pipe draining	No
Type of shower	Shower panel
Position of water connection	From top / backside
Material code casing	1.4301 Chrome Nickel steel V2A
Surface finish casing	Satin finished
Hygiene flushing	PREPARED
Franke Water Systems ws-info.int@franke.com www.franke.com 2020-07-15	

NEW

FRANKE

F5L Mix stainless steel shower panel

MODEL RANGE: F5 | F5LM2022 | 210.0590.341

Showers | Manual shower

Accessory Mandatory



AQUAJET-Slimline shower head for F5 shower panels

2030054255

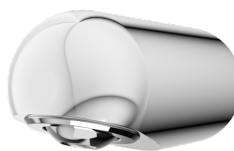
SHAS0011



AQUAJET-Comfort shower head for F5 shower panels

2030054254

SHAC0011

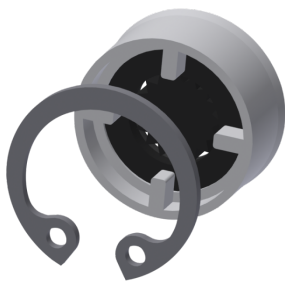


MÜNCHEN shower head for F5 shower panels

2030054793

SHMU0011

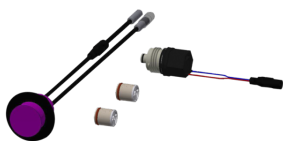
Accessory Optional



Flow controller 12,0 l/min

2000104783

ESHHE0002



Hygiene unit for F5L-Mix single lever mixer shower panel

2030057065

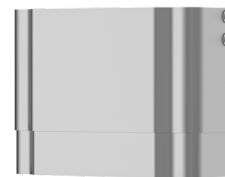
ACLM2003



Housing extension for F5 shower panels made of stainless steel

2030057066

ACXX2011



Housing extension for F5 shower panels made of stainless steel

2030057067

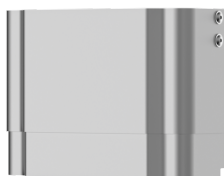
ACXX2012



Housing extension for F5 shower panels made of stainless steel

2030057068

ACXX2013



Housing extension for F5 shower panels made of stainless steel

2030057069

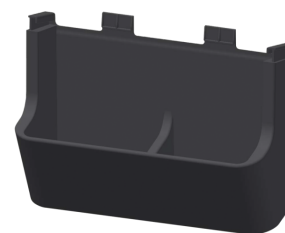
ACXX2014



Housing extension for F5 shower panels made of stainless steel

2030057070

ACXX2015



Shower gel dish for F5 shower panels

2030057077

ACXX2021

F5L Mix stainless steel shower panel

MODEL RANGE: F5 | F5LM2022 | 210.0590.341

Showers | Manual shower

Accessory Optional

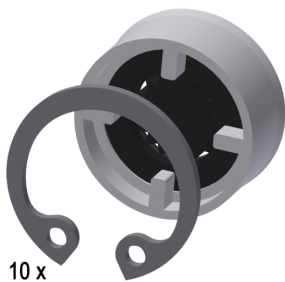


Connection adapter

2000101441

AQRM928

Spare Parts



Flow controller 9,0 l/min

2000104782

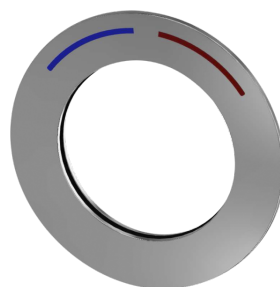
ESHHE0001



Lever cap

2030041543

ASLM2003



Rosette

2030045510

ASXM2003



Dust cap

2030010039

EAQFT0004



Ceramic disc cartridge with
thermostatic scald-protection

2030042712

ASLM2004



Disassembly tool

2030047203

ACXX9003



Stainless steel care set

2000109019

ZWSPL0024



Cleaning product CHROMOL 0,5 l

2000105091

ZWSPL0023