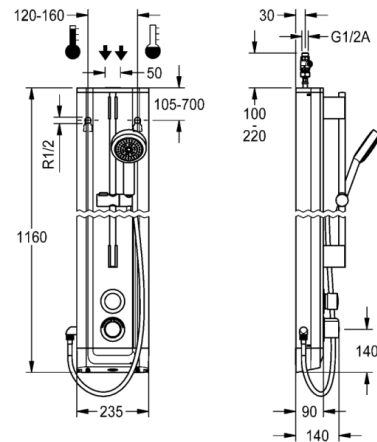


# F5S Therm stainless steel shower panel with hand shower fitting

MODEL RANGE: F5 | F5ST2023 | 210.0595.585

Showers | Self closing showers



F5S Therm shower panel made of stainless steel for wall mounting with DN 15 self-closing thermostatic mixer and a hand shower fitting. Hydraulically controlled, for connection to hot water and cold water. Shower valve with integrated FRAMIC self-closing cartridge, thermostat and mechanism for an optional water hygiene unit for automatic water hygiene flushing, program-controlled thermal disinfection (additional bypass solenoid-operated flush valve cartridge required) and storage of statistical data. FRAMIC self-closing cartridge, low maintenance and stagnation free, with ceramic disc technology, self closing, flow pressure independent due to the medium-independent design. Stepless adjustment of flow duration. Thermostat with metal handle, an adjustable and turn-proof temperature stop and an option for manual thermal disinfection. All-metal construction, visible parts high-polished or chrome-plated. Pre-fitted chrome-plated brass shower pole with height-adjustable hand shower holder and chrome-plated brass hand shower, shower head with rain jet, diameter 110 mm, shower hose 900 mm. Housing made of stainless steel with raised function surface and plastic cover caps. Connecting hoses with lockable water volume control with backflow preventer and strainer.

Dimensions of housing 235 x 1160 x 90 mm (W x H x D)

Technical data	
Overall depth	90.00 mm
Overall height	1,160.00 mm
Overall width	235.00 mm
Tailor made	No
Type of mounting	Wall mounting
Type of operation	Manual operation
Diameter nominal	DN 15
Inlet size	G-1-2-A
Material casing	Stainless steel
Material fitting	Brass
Type of mixing	Thermostat
Sound insulation	No
Surface finish fitting	Chromed
Minimum flow pressure	1.00 bar
Adjustable flow time	Yes
Functional principle	Hydraulic self-closing
Protective shutdown	No
Thermal disinfection	Prepared for automatic thermal disinfection
Additional connections	No
Circulation	No
Connection with pay water dispenser	Not possible
Shower pipe draining	No
Type of shower	Shower panel
Position of water connection	From top / backside
Material code casing	1.4301 Chrome Nickel steel V2A
Surface finish casing	Satin finished
Maximum flow time	35.00 seconds
Minimum flow time	5.00 seconds



# F5S Therm stainless steel shower panel with hand shower fitting

MODEL RANGE: F5 | F5ST2023 | 210.0595.585

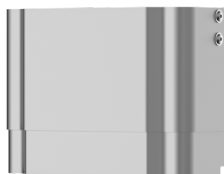
Showers | Self closing showers

## Accessory Optional



Hygiene unit for F5S Therm shower panel

2030057064  
ACST2004



Housing extension for F5 shower panels made of stainless steel

2030057066  
ACXX2011



Housing extension for F5 shower panels made of stainless steel

2030057067  
ACXX2012



Housing extension for F5 shower panels made of stainless steel

2030057068  
ACXX2013



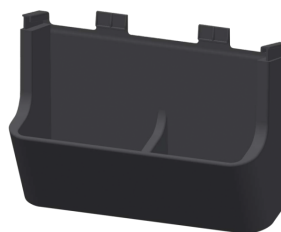
Housing extension for F5 shower panels made of stainless steel

2030057069  
ACXX2014



Housing extension for F5 shower panels made of stainless steel

2030057070  
ACXX2015



Shower gel dish for F5 shower panels

2030057077  
ACXX2021



Connection adapter

2000101441  
AQRM928

## Spare Parts



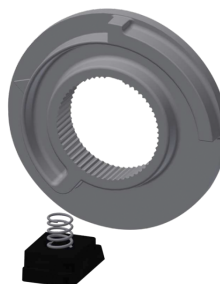
Cover

2030031443  
ESHOW0059



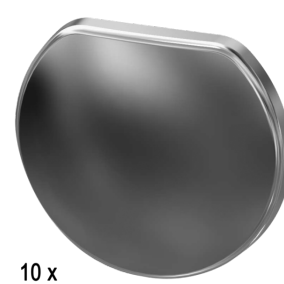
Temperature handle

2030047082  
ASXT9003



Temperature stop

2030003296  
EAQLT0003



10 x

Plug chromed

2030053006  
ASSX9004

# F5S Therm stainless steel shower panel with hand shower fitting

MODEL RANGE: F5 | F5ST2023 | 210.0595.585

Showers | Self closing showers

## Spare Parts



Push cap

2030049943

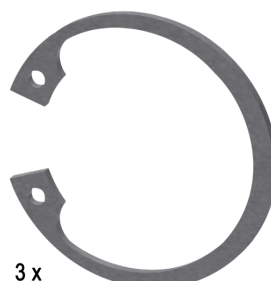
ASST2001



Guide ring

2030048356

ASSX9002

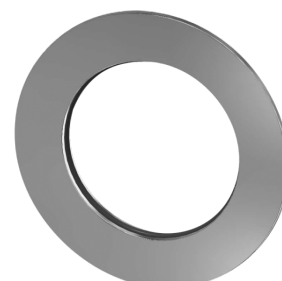


3 x

Safety ring

2030048357

ASSX9003



Rosette

2030048765

ASET2006



FRAMIC Self-closing cartridge

2030046145

ASSX9001



Disassembly tool

2030047203

ACXX9003



Stainless steel care set

2000109019

ZWSP0024



Cleaning product CHROMOL 0,5 l

2000105091

ZWSP0023