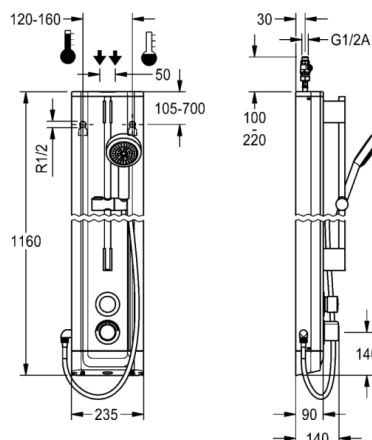


# F5S Therm stainless steel shower panel with hand shower fitting

MODEL RANGE: F5 | F5ST2021 | 210.0595.586

Showers | Self closing showers



F5S Therm shower panel made of stainless steel for wall mounting with DN 15 self-closing thermostatic mixer and connecting nozzles for a hand shower fitting. Hydraulically controlled, for connection to hot water and cold water. Shower valve with integrated FRAMIC self-closing cartridge, thermostat and pre-assembled hygiene unit including sensor with control electronics to perform automatic water hygiene flushing, program-controlled thermal disinfection (additional bypass solenoid-operated flush valve cartridge required) and storage of statistical data. FRAMIC self-closing cartridge, low maintenance and stagnation free, with ceramic disc technology, self closing, flow pressure independent due to the medium-independent design. Stepless adjustment of flow duration. Thermostat with metal handle, an adjustable and turn-proof temperature stop and an option for manual thermal disinfection. All-metal construction, visible parts high-polished or chrome-plated. Pre-fitted chrome-plated brass shower pole with height-adjustable hand shower holder and chrome-plated brass hand shower, shower head with rain jet, diameter 110 mm, shower hose 900 mm. Housing made of stainless steel with raised function surface and plastic cover caps. Connecting hoses with lockable water volume control with backflow preventer and strainer. Activated water hygiene flushing at fixed intervals of 24 hours. With option for parameterization and communication via the optional bidirectional remote control. Optional hygiene unit for battery operation with 6 V lithium battery (CR-P2) per fitting or separate power supply via plug-in power supply unit 6.75 V/12 V DC.

Dimensions of housing 235 x 1160 x 90 mm (W x H x D)

Battery compartment including battery or plug-in power supply unit with extension cable to be ordered separately.

Technical data	
Overall depth	90.00 mm
Overall height	1,160.00 mm
Overall width	235.00 mm
Tailor made	No
Type of mounting	Wall mounting
Type of operation	Manual operation
Diameter nominal	DN 15
Inlet size	G-1-2-A
Material casing	Stainless steel
Material fitting	Brass
Type of mixing	Thermostat
Sound insulation	No
Surface finish fitting	Chromed
Minimum flow pressure	1.00 bar
Adjustable flow time	Yes
Functional principle	Hydraulic self-closing
Protective shutdown	No
Thermal disinfection	Prepared for automatic thermal disinfection
Default automatic hygiene flushing	Fixed interval 24 hours
Power supply connection	6-12-VDC
Type of sensor	Opto-electronic sensor
Position of power connection	Top backside
Additional Water Systems	ws-info.int@franke.com   www.franke.com   2020-07-30
Circulation	No
Connection with pay water dispenser	Not possible
Shower pipe draining	No
Type of shower	Shower panel



# F5S Therm stainless steel shower panel with hand shower fitting

MODEL RANGE: F5 | F5ST2021 | 210.0595.586

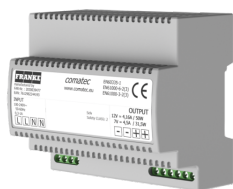
Showers | Self closing showers

## Accessory Mandatory



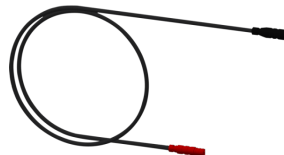
Battery compartment

2000109466  
ZAQCT0003



Power supply unit

2030039477  
ACEX9001



Extension cable 5 m

2030043814  
ACEX9010

## Accessory Optional



Bidirectional remote control for electronic fittings F3 and F5

2030036654  
ACEX9005



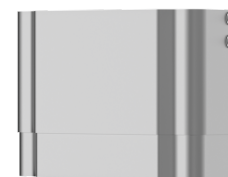
2-button remote control for fittings F3 and F5

2030036849  
ACEX9004



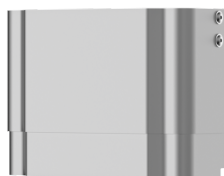
Housing extension for F5 shower panels made of stainless steel

2030057066  
ACXX2011



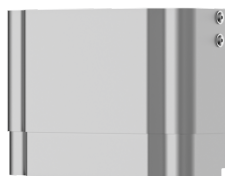
Housing extension for F5 shower panels made of stainless steel

2030057067  
ACXX2012



Housing extension for F5 shower panels made of stainless steel

2030057068  
ACXX2013



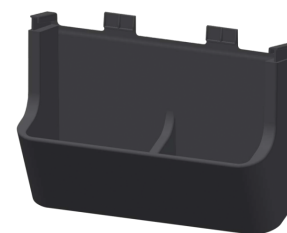
Housing extension for F5 shower panels made of stainless steel

2030057069  
ACXX2014



Housing extension for F5 shower panels made of stainless steel

2030057070  
ACXX2015



Shower gel dish for F5 shower panels

2030057077  
ACXX2021

# F5S Therm stainless steel shower panel with hand shower fitting

MODEL RANGE: F5 | F5ST2021 | 210.0595.586

Showers | Self closing showers

## Accessory Optional



Connection adapter

2000101441

AQRM928

## Spare Parts



Cover

2030031443

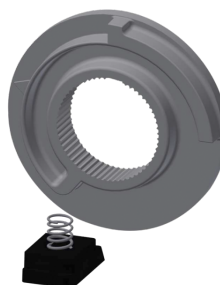
ESHOW0059



Temperature handle

2030047082

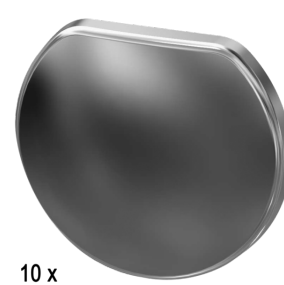
ASXT9003



Temperature stop

2030003296

EAQLT0003



10 x

Plug chromed

2030053006

ASSX9004



Push cap

2030049943

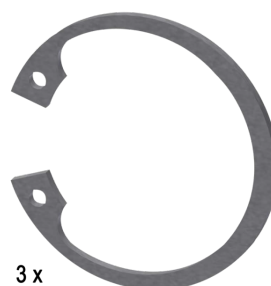
ASST2001



Guide ring

2030048356

ASSX9002

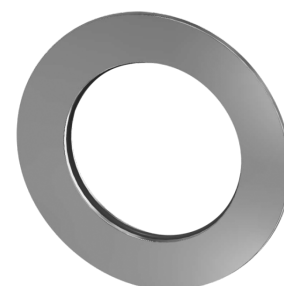


3 x

Safety ring

2030048357

ASSX9003



Rosette

2030048765

ASET2006

# F5S Therm stainless steel shower panel with hand shower fitting

MODEL RANGE: F5 | F5ST2021 | 2030056539

Showers | Self closing showers

## Spare Parts



**FRAMIC Self-closing cartridge**

2030046145

ASSX9001



**Solenoid valve cartridge**

2030003033

EAQFU0001



**Disassembly tool**

2030047203

ACXX9003



**Stainless steel care set**

2000109019

ZWSPL0024



**Cleaning product CHROMOL 0,5 l**

2000105091

ZWSPL0023