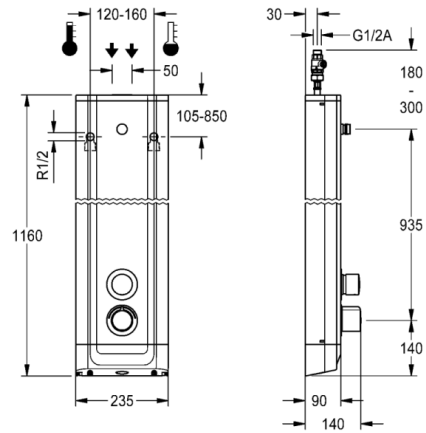


# F5S Therm stainless steel shower panel

MODEL RANGE: F5 | F5ST2020 | 210.0595.584

Showers | Self closing showers

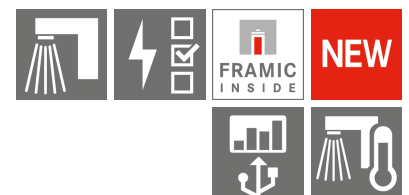


F5S Therm shower panel made of stainless steel for wall mounting with DN 15 self-closing thermostatic mixer and connecting nozzles for the shower head. Hydraulically controlled, for connection to hot water and cold water. Shower valve with integrated FRAMIC self-closing cartridge, thermostat and pre-assembled hygiene unit including sensor with control electronics to perform automatic water hygiene flushing, program-controlled thermal disinfection (additional bypass solenoid-operated flush valve cartridge required) and storage of statistical data. FRAMIC self-closing cartridge, low maintenance and stagnation free, with ceramic disc technology, self closing, flow pressure independent due to the medium-independent design. Stepless adjustment of flow duration. Thermostat with metal handle, an adjustable and turn-proof temperature stop and an option for manual thermal disinfection. All-metal construction, visible parts high-polished or chrome-plated. Connecting nozzles for the required additional DN 15 Franke shower head with pre-fitted flow regulator 9.0 l/min. Housing made of stainless steel with raised function surface and plastic cover caps. Connecting hoses with lockable water volume control with backflow preventer and strainer. Activated water hygiene flushing at fixed intervals of 24 hours. With option for parameterization and communication via the optional bidirectional remote control. Optional hygiene unit for battery operation with 6 V lithium battery (CR-P2) per fitting or separate power supply via plug-in power supply unit 6.75 V/12 V DC.

Dimensions of housing 235 x 1160 x 90 mm (W x H x D)

Shower head and battery compartment including battery or plug-in power supply unit with extension cable to be ordered separately.

Technical data	
Overall depth	90.00 mm
Overall height	1,160.00 mm
Overall width	235.00 mm
Tailor made	No
Type of mounting	Wall mounting
Type of operation	Manual operation
Diameter nominal	DN 15
Inlet size	G-1-2-A
Material casing	Stainless steel
Material fitting	Brass
Type of mixing	Thermostat
Sound insulation	No
Surface finish fitting	Chromed
Minimum flow pressure	1.50 bar
Volume flow rate at 3 bar	0.15 liter per second
Adjustable flow time	Yes
Functional principle	Hydraulic self-closing
Protective shutdown	No
Thermal disinfection	Prepared for automatic thermal disinfection
Default automatic hygiene flushing	Fixed interval 24 hours
Power supply connection	6-12-VDC
Position of power connection	Top backside
Additional connections	No
Circulation	No
Connection with pay water dispenser	Not possible



# F5S Therm stainless steel shower panel

MODEL RANGE: F5 | F5ST2020 | 210.0595.584

Showers | Self closing showers

## Accessory Mandatory



AQUAJET-Slimline shower head for F5 shower panels

2030054255

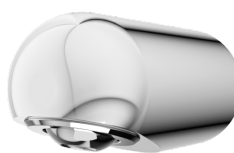
SHAS0011



AQUAJET-Comfort shower head for F5 shower panels

2030054254

SHAC0011



MÜNCHEN shower head for F5 shower panels

2030054793

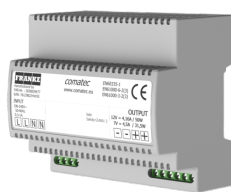
SHMU0011



Battery compartment

2000109466

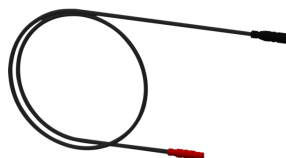
ZAQCT0003



Power supply unit

2030039477

ACEX9001

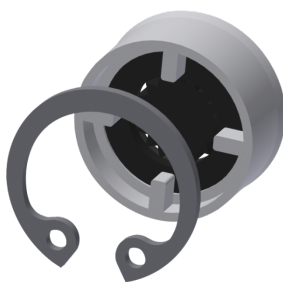


Extension cable 5 m

2030043814

ACEX9010

## Accessory Optional



Flow controller 12,0 l/min

2000104783

ESHHE0002



Bidirectional remote control for electrical fittings F3 and F5

2030036654

ACEX9005



2-button remote control for fittings F3 and F5

2030036849

ACEX9004



Housing extension for F5 shower panels made of stainless steel

2030057066

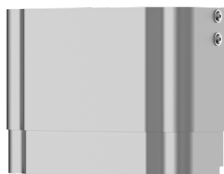
ACXX2011

# F5S Therm stainless steel shower panel

MODEL RANGE: F5 | F5ST2020 | 210.0595.584

Showers | Self closing showers

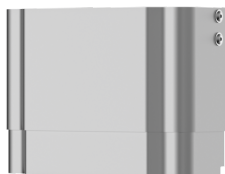
## Accessory Optional



Housing extension for F5 shower panels made of stainless steel

2030057067

ACXX2012



Housing extension for F5 shower panels made of stainless steel

2030057068

ACXX2013



Housing extension for F5 shower panels made of stainless steel

2030057069

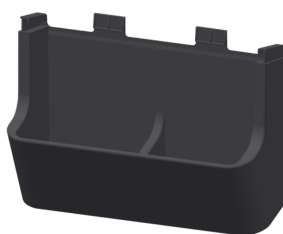
ACXX2014



Housing extension for F5 shower panels made of stainless steel

2030057070

ACXX2015



Shower gel dish for F5 shower panels

2030057077

ACXX2021

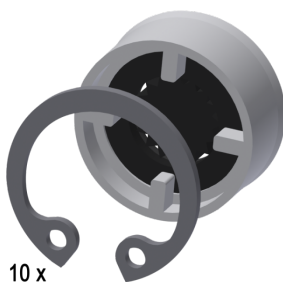


Connection adapter

2000101441

AQRM928

## Spare Parts



10 x

Flow controller 9,0 l/min

2000104782

ESHHE0001



Cover

2030031443

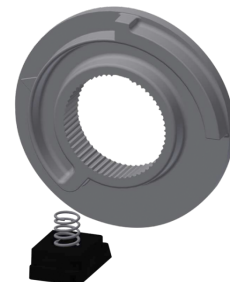
ESHOW0059



Temperature handle

2030047082

ASXT9003



Temperature stop

2030003296

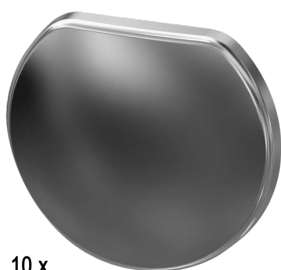
EAQLT0003

# F5S Therm stainless steel shower panel

MODEL RANGE: F5 | F5ST2020 | 2030055929

Showers | Self closing showers

## Spare Parts



10 x

**Plug chromed**

2030053006

ASSX9004



**Push cap**

2030049943

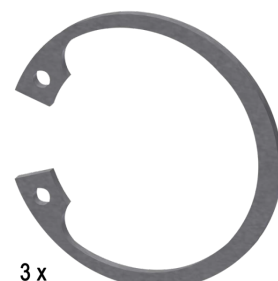
ASST2001



**Guide ring**

2030048356

ASSX9002



3 x

**Safety ring**

2030048357

ASSX9003



**Rosette**

2030048765

ASET2006



**FRAMIC Self-closing cartridge**

2030046145

ASSX9001



**Solenoid valve cartridge**

2030003033

EAQFU0001



**Disassembly tool**

2030047203

ACXX9003



**Stainless steel care set**

2000109019

ZWSPL0024



**Cleaning product CHROMOL 0,5 l**

2000105091

ZWSPL0023