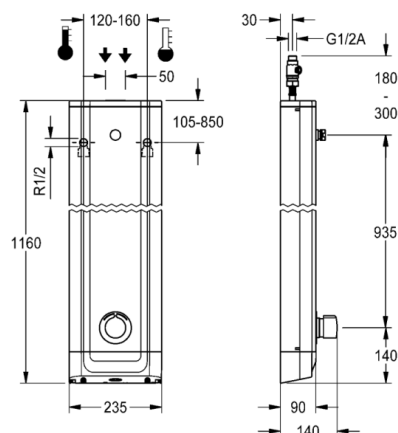


# F5S Mix stainless steel shower panel

MODEL RANGE: F5 | F5SM2020 | 210.0629.600

Showers | Self closing showers



F5S Mix shower panel made of stainless steel for wall mounting with DN 15 self-closing single control mixer and connecting nozzles for the shower head. FRAMIC self-closing mixing cartridge, hydraulically controlled, low maintenance and stagnation free, with ceramic disc technology, self closing, flow pressure independent due to the medium-independent design. Stepless adjustment of flow duration. With adjustable, turn-proof temperature stop. For connection to hot and cold water. All-metal construction, visible parts high-polished or chrome-plated. Connecting nozzles for the required additional DN 15 Franke shower head with pre-fitted flow regulator 9.0 l/min. Housing made of stainless steel with raised function surface and plastic cover caps. Connecting hoses with lockable water volume control with backflow preventer and strainer.

Dimensions of housing 235 x 1160 x 90 mm (W x H x D)

Shower head to be ordered separately.

Technical data	
Overall depth	90.00 mm
Overall height	1,160.00 mm
Overall width	235.00 mm
Tailor made	No
Type of mounting	Wall mounting
Type of operation	Manual operation
Diameter nominal	DN 15
Inlet size	G-1-2-A
Material casing	Stainless steel
Material fitting	Brass
Type of mixing	With mixing
Sound insulation	No
Surface finish fitting	Chromed
Minimum flow pressure	1.50 bar
Volume flow rate at 3 bar	0.15 liter per second
Adjustable flow time	Yes
Functional principle	Hydraulic self-closing
Protective shutdown	No
Thermal disinfection	No
Additional connections	No
Circulation	No
Connection with pay water dispenser	Not possible
Shower pipe draining	No
Type of shower	Shower panel
Position of water connection	From top / backside
Material code casing	1.4301 Chrome Nickel steel V2A
Surface finish casing	Satin finished
Maximum flow time	35.00 seconds
Minimum flow time	5.00 seconds



# F5S Mix stainless steel shower panel

MODEL RANGE: F5 | F5SM2020 | 210.0629.600

Showers | Self closing showers

## Accessory Mandatory



AQUAJET-Slimline shower head for F5 shower panels

2030054255

SHAS0011



AQUAJET-Comfort shower head for F5 shower panels

2030054254

SHAC0011

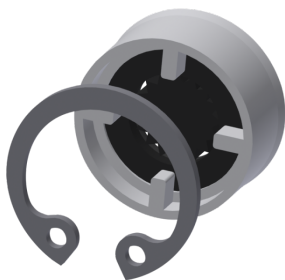


MÜNCHEN shower head for F5 shower panels

2030054793

SHMU0011

## Accessory Optional



Flow controller 12,0 l/min

2000104783

ESHHE0002



Housing extension for F5 shower panels made of stainless steel

2030057066

ACXX2011



Housing extension for F5 shower panels made of stainless steel

2030057067

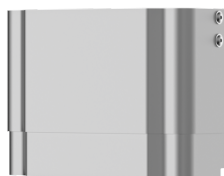
ACXX2012



Housing extension for F5 shower panels made of stainless steel

2030057068

ACXX2013



Housing extension for F5 shower panels made of stainless steel

2030057069

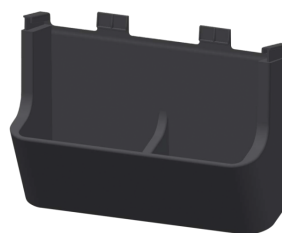
ACXX2014



Housing extension for F5 shower panels made of stainless steel

2030057070

ACXX2015



Shower gel dish for F5 shower panels

2030057077

ACXX2021



Connection adapter

2000101441

AQRM928

# F5S Mix stainless steel shower panel

MODEL RANGE: F5 | F5SM2020 | 210.0629.600

Showers | Self closing showers

## Spare Parts



10 x

### Plug chromed

2030053006

ASSX9004



### Handle push cap

2030050753

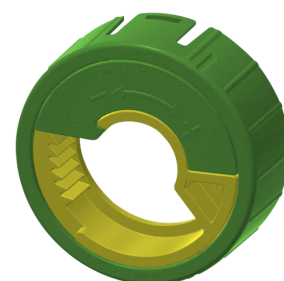
ASSM9004



### Guide ring

2030048356

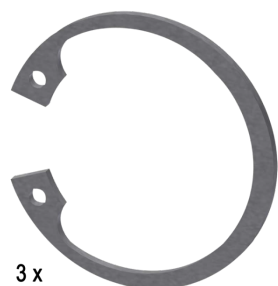
ASSX9002



### Temperature stop

2030046189

ASSM9002

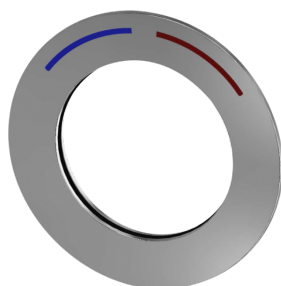


3 x

### Safety ring

2030048357

ASSX9003



### Rosette

2030045510

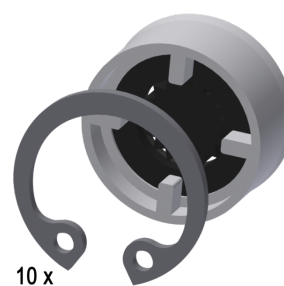
ASXM2003



### FRAMIC self-closing mixing cartridge

2030046185

ASSM9001



10 x

### Flow controller 9,0 l/min

2000104782

ESHHE0001



### Disassembly tool

2030047203

ACXX9003



### Stainless steel care set

2000109019

ZWSPL0024



### Cleaning product CHROMOL 0,5 l

2000105091

ZWSPL0023