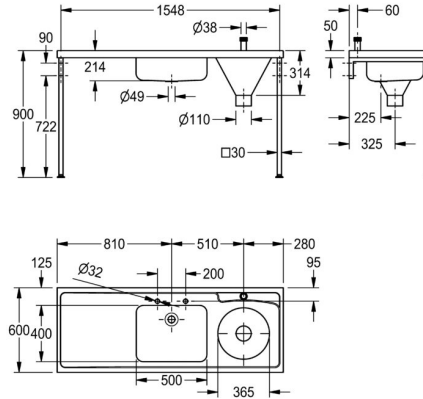


DELABIE | DVS

DUHS hospital disposal unit left hand drainer no tap holes or overflow



G22027L

Hospital disposal unit

A DUHS hospital disposal unit manufactured from 1.2mm thick, grade 1.4301 (304) stainless steel with a satin polish finish. The top is turned down on all four edges and incorporates a wet area recess. Fitted with a sluice hopper at one end supplied with a top inlet. The hopper has a 110mm dia. outlet which can accept a P or S trap, available as an extra. A wash up bowl is positioned next to the sluice hopper and is prepared for a 38 mm waste outlet.

The wash up bowl does not have an overflow, flush grated wastes are available as an extra. Stainless steel cisterns are available with stainless steel downpipes or plastic cisterns with plastic downpipes are available. Plastic cisterns have a 9 litre capacity whereas the stainless steel cistern can be 6, 7 or 9 litre capacity and all are fitted with a 13mm HP brass valve, plastic float and CP metal flushing lever handles. The unit should only be fed from a cistern or tank water supply.

Technical data

| | |
|-----------------------|--------------------------------|
| Bowl - bowl height | 200mm |
| Bowl finish | Satin finish |
| Bowl depth | 400mm |
| Bowl width | 500mm |
| Drainer position | Left |
| Drainer or storage | Drainer |
| Material | Stainless steel |
| Material code | 1.4301 chrome nickel steel V2A |
| Material thickness | 1.2mm |
| Overall depth | 600mm |
| Overall height | 300mm |
| Overall width | 1,600mm |
| Overflow | No |
| Surface finish | Satin finish |
| Tap ledge | No |
| Type of mounting | Wall or floor mounting |
| Waste hole position | Centre back |
| Waste hole projection | 225mm |
| Waste size | DN 32 |