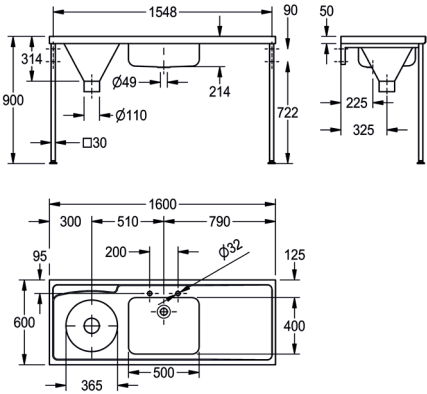


DUHS Hospital disposal unit



G22018R
DUHS Hospital disposal unit

A DUHS hospital disposal unit manufactured from 1.2 mm thick, grade 1.4301 (304) stainless steel with satin polish finish. The top is turned down on all four edges and incorporates a wet area recess. Fitted with a sluice hopper at one end which can be suitable for either top entry or duct mounted services. The hopper has a 110mm diameter outlet which can accept a P or S trap, available as an extra. A wash up bowl is positioned next to the sluice hopper and is prepared for a 38 mm waste outlet. The wash up bowl does not have an overflow. Stainless steel cistern are available with stainless steel downpipes for surface mounting installations. For installations where the cistern

is duct mounted a plastic cistern with plastic downpipe is available. Plastic cistern have a 9 litres capacity where the stainless steel cistern can be 6, 7 or 9 litre capacity and all are fitted with 13 mm HP brass valve, plastic float and CP metal flushing lever handles. The unit should only be fed from a cistern or tank water supply. Unit can be mounted on either stainless steel cantilever brackets or stainless steel front leg supports. Front leg supports give a working height of 900mm and have adjustable feet which can be screwed to the floor for extra stability. L or R after the code number refers to the handing of the drainer ie. left or right when facing front of unit. HTM Standard 64.

Technical data	
Bowl height	200mm
Bowl depth	400mm
Bowl width	500mm
Material thickness	1.20mm
Overall depth	600mm
Overall height	300mm
Overall width	1,600mm
Waste hole projection	225mm
Drainer position	Right
Material	Stainless steel
Material code	1.4301 Chrome Nickel steel V2A
Tailor made	No
Tap ledge	No
Type of mounting	Wall and floor mounting
Waste hole position	Center back
Bowl finish	Satin finish
Overflow	No
Surface finish	Surface finish
Waste size	DN 32
Drainer or storage	Drainer
Outlet size	DN 100
Minimum flushing capacity	6 litre
Product code	G2218R