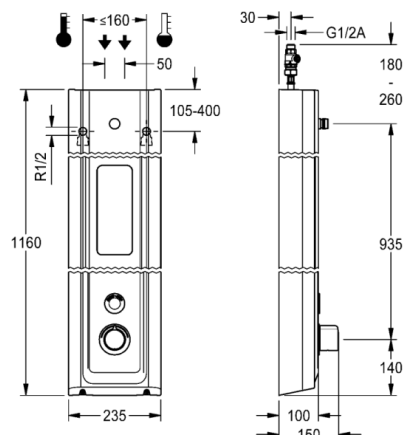


# F5E Therm MIRANIT shower panel with shower gel shelf

MODEL RANGE: F5 | F5ET2026 | 210.0596.038

Showers | Electronic self closing shower

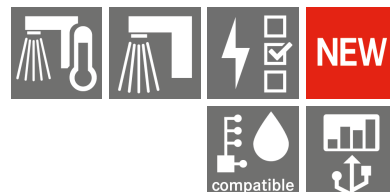


F5E Therm shower panel made of mineral material for wall mounting with thermostatic mixer and connecting nozzles for the shower head. Electrically controlled, for connection to hot water and cold water. Shower valve with integrated solenoid valve cartridge, thermostat and mechanism for optional bypass solenoid valve cartridge to perform program-controlled thermal disinfection. Thermostat with metal handle, an adjustable and turn-proof temperature stop and an option for manual thermal disinfection. All-metal construction, visible parts high-polished or chrome-plated. Connecting nozzles for the required additional DN 15 Franke shower head with pre-fitted flow regulator 9.0 l/min. Housing with raised function surface and seamless moulded shower gel shelf made of MIRANIT resin-bonded mineral material with pore-free smooth surface (temperature-resistant up to 80 °C), Alpine white colour. Button sensor including control electronics with start/stop function and deactivation for cleaning. Connecting hoses with lockable water volume control with backflow preventer and strainer. Activated water hygiene flushing 24 hours after last activation and saving of statistical data. With option for parameterization and communication via the optional bidirectional remote control. Battery operation with 6 V lithium battery (CR-P2) per fitting, separate power supply via plug-in power supply unit 6.75 V/12 V DC or AQUA 3000 open system accessories.

Dimensions of housing 235 x 1160 x 100 mm (W x H x D)

Shower head and battery compartment including battery or plug-in power supply unit with extension cable to be ordered separately.

Technical data	
Overall depth	100.00 mm
Overall height	1,160.00 mm
Overall width	235.00 mm
Tailor made	No
Type of mounting	Wall mounting
Type of operation	Sensor operation
Diameter nominal	DN 15
Inlet size	G-1-2-A
Material casing	Mineral material
Material fitting	Brass
Type of mixing	Thermostat
Sound insulation	No
Surface finish fitting	Chromed
Minimum flow pressure	1.50 bar
Volume flow rate at 3 bar	0.15 liter per second
Adjustable flow time	Yes
Functional principle	Electronic self-closing
Protective shutdown	Yes
Thermal disinfection	Prepared for automatic thermal disinfection
Default automatic hygiene flushing	24h after the last activity
Power supply connection	6.75 / 12 V DC / A3000 open
Type of sensor	Opto-electronic sensor
Additional connections	No
Circulation	No
Connection with pay water dispenser	via electronic module
Shower pipe draining	No
Type of shower	Shower panel



**FRANKE**

# F5E Therm MIRANIT shower panel with shower gel shelf

MODEL RANGE: F5 | F5ET2026 | 210.0596.038

Showers | Electronic self closing shower

## Accessory Mandatory



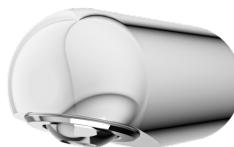
**AQUAJET-Slimline shower head for F5 shower panels**

2030054255  
SHAS0011



**AQUAJET-Comfort shower head for F5 shower panels**

2030054254  
SHAC0011



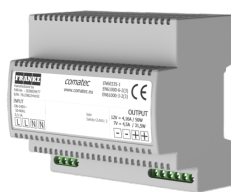
**MÜNCHEN shower head for F5 shower panels**

2030054793  
SHMU0011



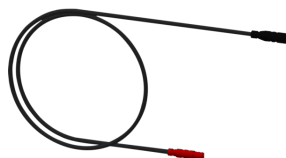
**Battery compartment**

2000109466  
ZAQCT0003



**Power supply unit**

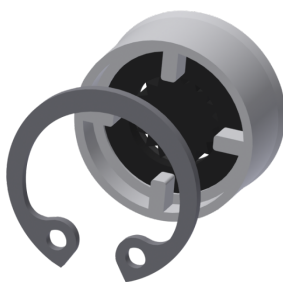
2030039477  
ACEX9001



**Extension cable 5 m**

2030043814  
ACEX9010

## Accessory Optional



**Flow controller 12,0 l/min**

2000104783  
ESHHE0002



**Bidirectional remote control for electrical fittings F3 and F5**

2030036654  
ACEX9005



**2-button remote control for fittings F3 and F5**

2030036849  
ACEX9004



**Housing extension for F5 shower panels made of MIRANIT**

2030057071  
ACXX2016

# F5E Therm MIRANIT shower panel with shower gel shelf

MODEL RANGE: F5 | F5ET2026 | 210.0596.038

Showers | Electronic self closing shower

## Accessory Optional



Housing extension for F5 shower panels made of MIRANIT

2030057072  
ACXX2017



Housing extension for F5 shower panels made of MIRANIT

2030057073  
ACXX2018



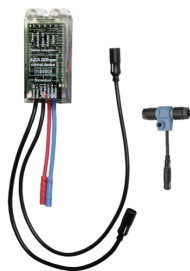
Housing extension for F5 shower panels made of MIRANIT

2030057075  
ACXX2019



Housing extension for F5 shower panels made of MIRANIT

2030057076  
ACXX2020



Electronic module EM5 for F5 shower taps

2030041918  
ACET2001



Connection adapter

2000101441  
AQRM928

## Spare Parts



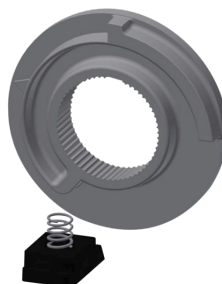
Cover

2030031443  
ESHOW0059



Temperature handle

2030047082  
ASXT9003



Temperature stop

2030003296  
EAQLT0003



Solenoid valve cartridge

2030003033  
EAQFU0001

# F5E Therm MIRANIT shower panel with shower gel shelf

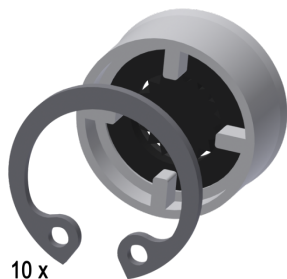
MODEL RANGE: F5 | F5ET2026 | 2030056574

Showers | Electronic self closing shower

---

## Spare Parts

---



10 x

---

Flow controller 9,0 l/min

2000104782

ESHHE0001

---