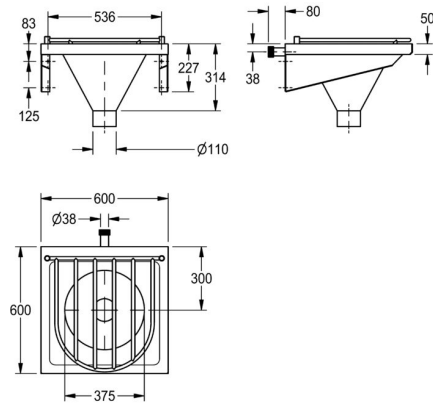


KWC
DUG Domestic services disposal sink



G22041N
DUG Domestic services disposal sink

Wall mounted domestic services disposal unit. Manufactured from 1.2mm thick, grade 1.4301 (304) stainless steel with satin finish. Incorporates a sluice hopper with a back inlet suitable for duct mounting. The hopper is designed with a 110mm diameter outlet which can accept a P trap (sold separately). The unit should only be fed from a cistern or tank water supply.

A duct mounted 9 litre plastic cistern is available separately, this is supplied with a plastic downpipe, plastic float and metal flushing lever handles. The unit is fixed to the wall using two cantilever brackets and wall fixings (sold separately). Manufactured in accordance with HTM 64 / HBN 00-10, Part C Standards.

Technical data

Bowl - bowl depth	300mm
Bowl finish	Satin finish
Bowl width	375mm
Drainer or storage	No
Gross weight	12.6kg
Material	Stainless steel
Material code	1.4301 chrome nickel steel V2A
Material thickness	1.2mm
Minimum flushing capacity	6 litre
Net weight	11.1kg
Outlet size	DN 100
Overall depth	600mm
Overall height	300mm
Overall width	600mm
Surface finish	Satin finish
Type of mounting	Wall mounted