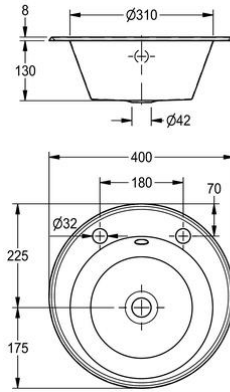


KWC

Inset washbasin with tap landing



D20170N

Inset washbasin with tap landing

Washbasin for inseting into worktops, manufactured from grade 1.4301 (304) stainless steel - satin polish finish, material thickness 1.2mm. Prepared for 32mm waste outlet and verflow hole with two tapholes in the rear ledge behind the bowl - suitable for basin taps only (deck mixers cannot be fitted). Bowls are supplied complete with fixing clips for inseting into worktops.

Technical data

Bowl - bowl depth	122mm
Bowl finish	Satin finish
Bowl depth	310mm
Bowl shape	Circle
Gross weight	2kg
Material	Stainless steel
Material code	1.4301 chrome nickel steel V2A
Material thickness	1.2mm
Overall height	130mm
Overall width	400mm
Overflow	Yes
Rear upstand	No
Splash back	No
Surface finish	Satin finish
Tap ledge	Yes
Type of mounting	Inset mounting
Waste hole position	Centre
Waste kit included	No
Waste size	DN 25
Net weight	1.6kg

KWC

Inset washbasin with tap landing

Optional accessories



Crosshead basin tap

F1080N
Vanity top

Lever action basin taps

F1329N
Vanity top
