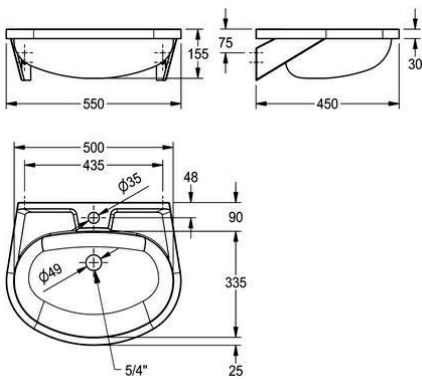


KWC
Wall mounted washbasin



BS205-M

Washbasin

Single wash basin for wall mounting, stainless steel, surface satin finished, material thickness 1mm, seamless welded bowl with diameter 500x335x155mm, oval shape, 90mm tap ledge, prewelded mounting brackets, with soap dish, incl. screws and dowels.

Technical data

Bowl position	Centre
Bowl - bowl depth	155mm
Bowl finish	Satin finish
Bowl depth	335mm
Bowl shape	Oval
Bowl width	500mm
Colour	No colour
Gross weight	3.73kg
Material	Stainless steel
Material code	1.4301 chrome nickel steel
Material thickness	1mm
Net weight	3.63kg
Overall depth	450mm
Overall height	155mm
Overall width	550mm
Overflow	Yes
Rear upstand	No
Siphone included	No
Splash back	No
Surface finish	Satin finish
Number of tap holes	1
Tap hole diameter	35mm
Tap hole position	Middle
Type of mounting	Wall mounting
Waste hole position	Centre back
Waste hole projection	190mm
Waste kit included	Yes
Waste size	DN 32
Type of waste kit	Plug waste