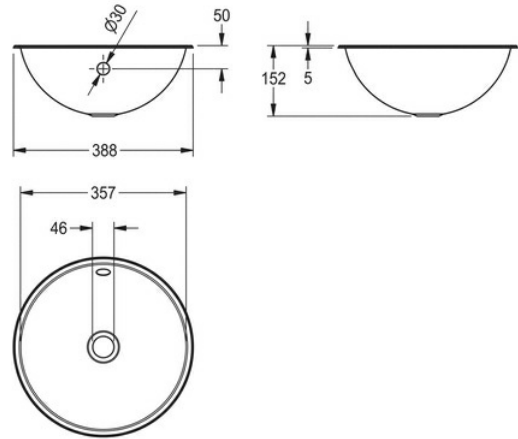


# ROUND BASIN: RNDH360

RNDH360 | 2000056428

PRODUCT GROUP : Wash basins | ARTICLE FAMILY : Wash basins | ARTICLE GROUP : RNDH360 ++ | MODEL RANGE : RONDO



Round inset vanity basin, can be mounted from top or underneath, stainless steel, material thickness 1 mm, bowl diameter 357 mm, with overflow, incl. 5/4" overflow kit without waste, stainless steel lugs for underneath mounting are included. Outcut diameter for mounting from top: 368 mm, outcut diameter for mounting from underneath: 350 mm

surface high-polished

## TECHNICAL DATA

bowl position	center
bowl - bowl depth	150.00 mm
bowl finish	high polished
bowl - depth	357.00 mm
bowl shape	circle
bowl - width	357.00 mm
colour	no colour
gross weight	1.66 kg
material	stainless steel
material code	1.4301 Chrome Nickel steel V2A
material thickness	1.00 mm
net weight	1.30 kg
number of bowls	1.0000000000000000E+00
overall depth	388.00 mm
overall height	150.00 mm
overall width	388.00 mm
overflow	yes
rear upstand	no
siphon included	no
splash back	no
surface finish	high polished
number of tap holes	0

tap ledge	no
type of mounting	inset mounting
waste hole position	centre
waste hole projection	194.00 mm
waste kit included	no
waste size	DN 32

# ROUND BASIN: RNDH360

RNDH360 | 2000056428

PRODUCT GROUP : **Wash basins** | ARTICLE FAMILY : **Wash basins** | ARTICLE GROUP : **RNDH360 ++** | MODEL RANGE : **RONDO**

---

## ACCESSORY

---



---

**SELF-CLOSING PILLAR**

**TAP: AQUA201**

---

2000061898

---