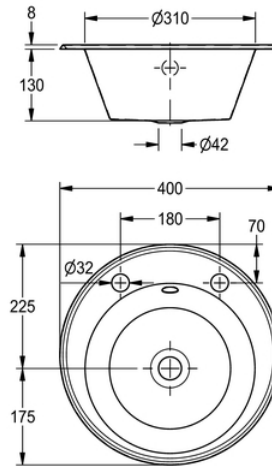


# INSERT WASHBASIN: D20170N

D20170N | 2000100240

PRODUCT GROUP : Wash basins | ARTICLE FAMILY : Wash basins | ARTICLE GROUP : D20170N



Washbasin for inseting into worktops, manufactured from grade 1.4301 (304) stainless steel - satin polish finish, material thickness 1.2mm. Prepared for 32mm waste outlet and verflow hole with two tapholes in the rear ledge behind the bowl - suitable for basin taps only (deck mixers cannot be fitted). Bowls are supplied complete with fixing clips for inseting into worktops.

## TECHNICAL DATA

bowl - bowl depth	122.00 mm
bowl finish	satin finished
bowl - depth	310.00 mm
bowl shape	circle
gross weight	2.00 kg
material	stainless steel
material code	1.4301 Chrome Nickel steel V2A
material thickness	1.20 mm
overall height	130.00 mm
overall width	400.00 mm
overflow	yes
rear upstand	no
splash back	no
surface finish	satin finished
tap ledge	yes
type of mounting	inset mounting
waste hole position	centre
waste kit included	no
waste size	DN 25
net weight	1.60 kg

# INSERT WASHBASIN: D20170N

D20170N | 2000100240

PRODUCT GROUP : **Wash basins** | ARTICLE FAMILY : **Wash basins** | ARTICLE GROUP : **D20170N**

---

## ACCESSORY

---



---

**TAP: F1080**

---

2000100386

---



---

**TAP: F1082**

---

2000100387

---



---

**TAP: F1329**

---

2000100392

---