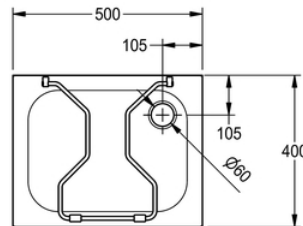
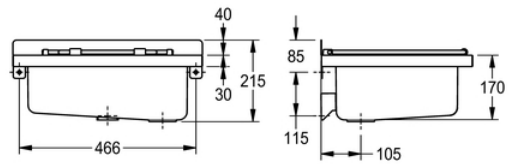


CLEANERS SINK: BS302

BS302 | 2000071903

ARTICLE GROUP : **BS302** | ARTICLE FAMILY : **Cleaners sink** | PRODUCT GROUP : **Utility sinks** | MODEL RANGE : **SIRIUS**



General purpose sink for wall mounting, stainless steel, surface satin finished, material thickness 1.2 mm, seamless welded bowl with dimensions 420x400x170 mm, rounded edges, 1 1/2" plug waste, drainage back right, 40 mm rear upstand, incl. stainless steel screws and dowels.

with stainless steel hinged grating with rubber bumps

TECHNICAL DATA

splash back height	40.00 mm
bowl position	center
bowl construction	radius corners
bowl - bowl depth	175.00 mm
bowl finish	satin finished
bowl - depth	320.00 mm
bowl - width	420.00 mm
brushes	without brushes
drainer or storage	no
grid	hinged
grid material	stainless steel
gross weight	5.40 kg
material	stainless steel
material code	1.4301 Chrome Nickel steel V2A
material code grid	1.4301 Chrome Nickel steel V2A
material thickness	1.00 mm
net weight	5.10 kg
number of waste holes	1
outlet size	G 1 1/2 B
overall depth	400.00 mm
overall height	215.00 mm
overall width	500.00 mm
overflow	no

rear upstand	no
wash riffle	no
spillway	no
splash back	component of another part
surface finish	satin finished
tap ledge	no
type of mounting	wall mounting
type of utility sink	multi purpose sink
type of waste kit	perforated waste
waste hole position	right back corner
waste hole projection	105.00 mm
waste kit included	yes
waste size	DN 40
sump	no
sump basket	no
number of wash places	1