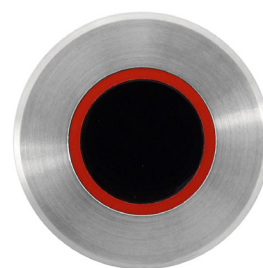


WM Programmable Tap Sensor

With Red Insert

AC02-025

WM Programmable tap sensor with Red Insert.
Adjustable settings include; run-on time, sensor range, purge and more.
Compatible with most DVS taps.

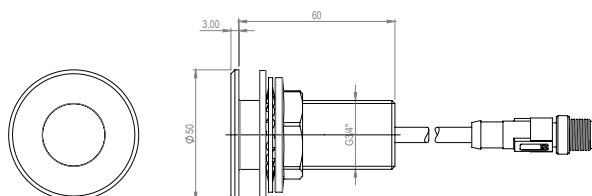


PRODUCT NUMBER

AC02-025

TECHNICAL DATA

| | |
|------------------------------|--|
| Material | 316 Stainless Steel |
| Surface finish | Brushed |
| Gross weight | 0.2 kg |
| Operation type | A.I.R (Active Infrared) touch-free |
| Type of mounting | Wall mounted (Ø27mm drill hole required) |
| Cable length | 850mm |
| Adjustable settings | |
| Runtime | 2, 5, 10, 15, 20 & 30 Seconds (Default 2 seconds) |
| Sensor range | 1-10 (Default 5) |
| Wave-on / Wave-off operation | ON/OFF (Default OFF) |
| Anti Vandal time | 30 secs, 1, 2, 4 & 8 mins (Default 1 Minute) |
| Automatic purge | ON/OFF (Default OFF) |
| Purge run time | 30 secs, 1, 2, 4 & 8 mins (Default 1 Minute) |
| Lock outs | OFF, 4, 6, 8 & 10 ops (Default OFF) |



Last updated:
2022-03-07, Dart Valley Systems