

# SPORTS AND LEISURE WASHROOM SOLUTIONS



**KWC DVS.** The  
new name of DVS  
& Franke Sissons



# FRANKE WATER SYSTEMS

World leader in supplying  
stadia and leisure solutions

*“Franke’s brand promise  
is to ‘Make It Wonderful’,  
whether you are a business  
partner or an end user”*

## Over 230 years of experience

Franke has specialised in products for commercial washrooms for over 230 years. Dart Valley Systems is a market leader in water-saving products and automatic washroom solutions, supplying products into the healthcare market for more than 35 years. Together Franke and DVS provide one wonderful solution to specialist applications.

Our extensive knowledge enables us to understand the key considerations required in sport and leisure washrooms, and we have designed suitable products for sports stadiums, leisure facilities and event venues. This stadia and leisure package covers everything from public areas and player dressing rooms right through to luxurious restrooms in VIP and banqueting areas. Many of these products are also suitable for pubs, restaurants and other leisure facilities.





## Contents

Accreditations	4
Planox washtroughs	6
Miranit washtroughs without splashback	8
Miranit washtroughs with splashback	10
Showers	12
Touch-free taps	14
Manual and self-closing taps	16
Stainless steel accessories	18
Soap and sanitiser dispensers	20
Drinking fountains	26
WCs	28
Urinals	30
WC and urinal flushing	32
Cleaning and janitorial	34
Catering	36
Accessible	38



# ACCREDITATIONS

**BREEAM** Franke can assist specifiers in achieving BREEAM points for projects with a range of water and energy efficient products.

**UNIFIED WATER LABEL** Part of the BMA, the water efficient product label focuses on specific water saving products that are particularly water efficient.



## **NSF TMV3**

TMV3 scheme ensures that products are suitable for healthcare environments and provide a safe water supply.



**WRAS** promote, encourage and enforce the prevention of waste, undue consumption, misuse, or contamination of water.

**HOLDERS OF ISO9001** globally recognised rigorous set of standards for quality management.

**HOLDERS OF ISO14001** globally recognised rigorous set of standards for environmental management

**ACCREDITED CONTRACTOR CHAS** The Contractors Health and Safety Assessment Scheme improves health and safety standards across the UK.

**SAFE CONTRACTOR APPROVED** SafeContractor delivers a tailored health and safety accreditation.

**CONSTRUCTIONONLINE** Help buyers to simplify and speed up their search, improving resource and cost efficiency through the validation of purchasing decisions. Based on suppliers completion of multiple document working to the PAS 91 criteria.

**RIBA CPD** We offer a choice of RIBA approved CPD interactive seminars – a must for anyone specifying washrooms for commercial projects.

**BMA** The Bathroom Manufacturers association acts as an information highway between Industry Government and the consumer on all issues that affect the bathroom business in the UK.

**WELS** Australian Standards relating to product quality, including health and safety efficiency.



**CE MARKING** is applied to products to indicate conformity to the current regulations. Certifications can be found on our websites.



**NBS PLUS & NATIONAL BIM LIBRARY** A library of building products, with over 200 products listed and a number of corresponding BIM models for both Franke and Dart Valley branded ranges.



**WATER TECHNOLOGY LIST (WTL)** WTL provides details of products that qualify for the enhanced capital allowance scheme, both Franke and Dart Valley branded ranges are listed in the database.

# PLANOX WASHTROUGHS

## Seamlessly welded stainless steel washtroughs

### Stainless steel washtroughs

The Planox range of washtroughs offers a functional, easy-to-clean and user-friendly solution whilst ensuring optimum hygiene. Manufactured from 1.2mm thick grade 1.4301 (304) stainless steel with a satin polished finish, these troughs can withstand high usage and busy areas such as stadiums, sports halls and leisure centres. The troughs are seamlessly welded using an innovative robotic laser, making them highly resistant to dirt and bacteria. The 1cm lowered tap ledge stops water from spilling onto the floor, preventing hazards and maintaining excellent levels of hygiene.

### Planox washtroughs for deck mounted taps

<b>PL6T-UK</b>	203.0564.759	600mm trough with tap ledge
<b>PL8T-UK</b>	203.0564.760	800mm trough with tap ledge
<b>PL12T-UK</b>	203.0563.654	1200mm trough with tap ledges
<b>PL16T-UK</b>	203.0564.761	1600mm trough with tap ledge
<b>PL18T-UK</b>	203.0564.762	1800mm trough with tap ledge
<b>PL24T-UK</b>	203.0564.763	2400mm trough with tap ledge
<b>PL30T-UK</b>	203.0564.767	3000mm trough with tap ledge

### Planox washtroughs for bib taps

<b>PL6-UK</b>	203.0564.719	600mm trough without tap ledge
<b>PL8-UK</b>	203.0564.751	800mm trough without tap ledge
<b>PL12-UK</b>	203.0564.752	1200mm trough without tap ledge
<b>PL16-UK</b>	203.0564.754	1600mm trough without tap ledge
<b>PL18-UK</b>	203.0564.755	1800mm trough without tap ledge
<b>PL24-UK</b>	203.0564.757	2400mm trough without tap ledge
<b>PL30-UK</b>	203.0564.758	3000mm trough without tap ledge

### Optional shrouds

Conceal plumbing by adding a shroud (available in two sizes).

<b>PL-SHROUD LRG</b>	203.0563.655	For troughs with tap ledge
<b>PL-SHROUD SML</b>	203.0564.788	For troughs without tap ledge



304 stainless steel



Bespoke lengths



Hygienic material



Easy to clean



Seamlessly welded

All troughs are available with deck mounted and bib taps (see brassware on pages 12-15)



PL24-UKMF3



Bespoke lengths between  
600mm and 3000mm,  
with/without splashback or  
tap ledge are also available.  
Please call us on  
**01246 458900** to discuss  
your requirements.



**Stratos touch-free  
soap dispenser**

Infrared touch-free sensor  
activation and 800ml tank.

**STRX625** 201.0000.026



**Stratos touch-free  
paper towel dispenser**

Infrared sensor and  
integrated tear-off edge.

**STRX630** 201.0000.006

# MIRANIT WASHTROUGHS

Robust composite washtroughs that leave a long lasting impression

## Miranit composite washtroughs

Franke's SOLX washtroughs are manufactured from a unique, robust material, making them ideal for any sports or entertainment establishment. Miranit is cast in a single mould without any seams or joints and has excellent material properties; it is temperature resistant up to 80°C and is shatterproof, unlike most ceramics on the market. Finished with a gel coat surface, Miranit is easy to clean and maintain and boasts excellent hygiene standards for busy environments such as sports stadiums.

### 2 PERSON MIRANIT COMPOSITE WASHTROUGH

Trough dimensions: 1200 x 170 x 480mm (W x H x D)

<b>SOLX1200</b>	203.0000.217	Without tap holes
<b>SOLX1200T</b>	203.0000.226	With tap holes
<b>SOLX1200E</b>	203.0000.218	With electronic taps
<b>SOLX1200MF3</b>	203.0547.761	With self-closing taps

### 3 PERSON MIRANIT COMPOSITE WASHTROUGH

Trough dimensions: 1800 x 170 x 480mm (W x H x D)

<b>SOLX1800</b>	203.0000.229	Without tap holes
<b>SOLX1800T</b>	203.0000.238	With tap holes
<b>SOLX1800E</b>	203.0000.230	With electronic taps
<b>SOLX1800MF3</b>	203.0547.762	With self-closing taps

### 4 PERSON MIRANIT COMPOSITE WASHTROUGH

Trough dimensions: 2400 x 170 x 480mm (W x H x D)

<b>SOLX2400</b>	203.0000.241	Without tap holes
<b>SOLX2400T</b>	203.0000.249	With tap holes
<b>SOLX2400E</b>	203.0000.242	With electronic taps
<b>SOLX2400MF3</b>	203.0547.763	With self-closing taps



Composite material



Hygienic finish



Easy to clean



Resistant up to 80°C



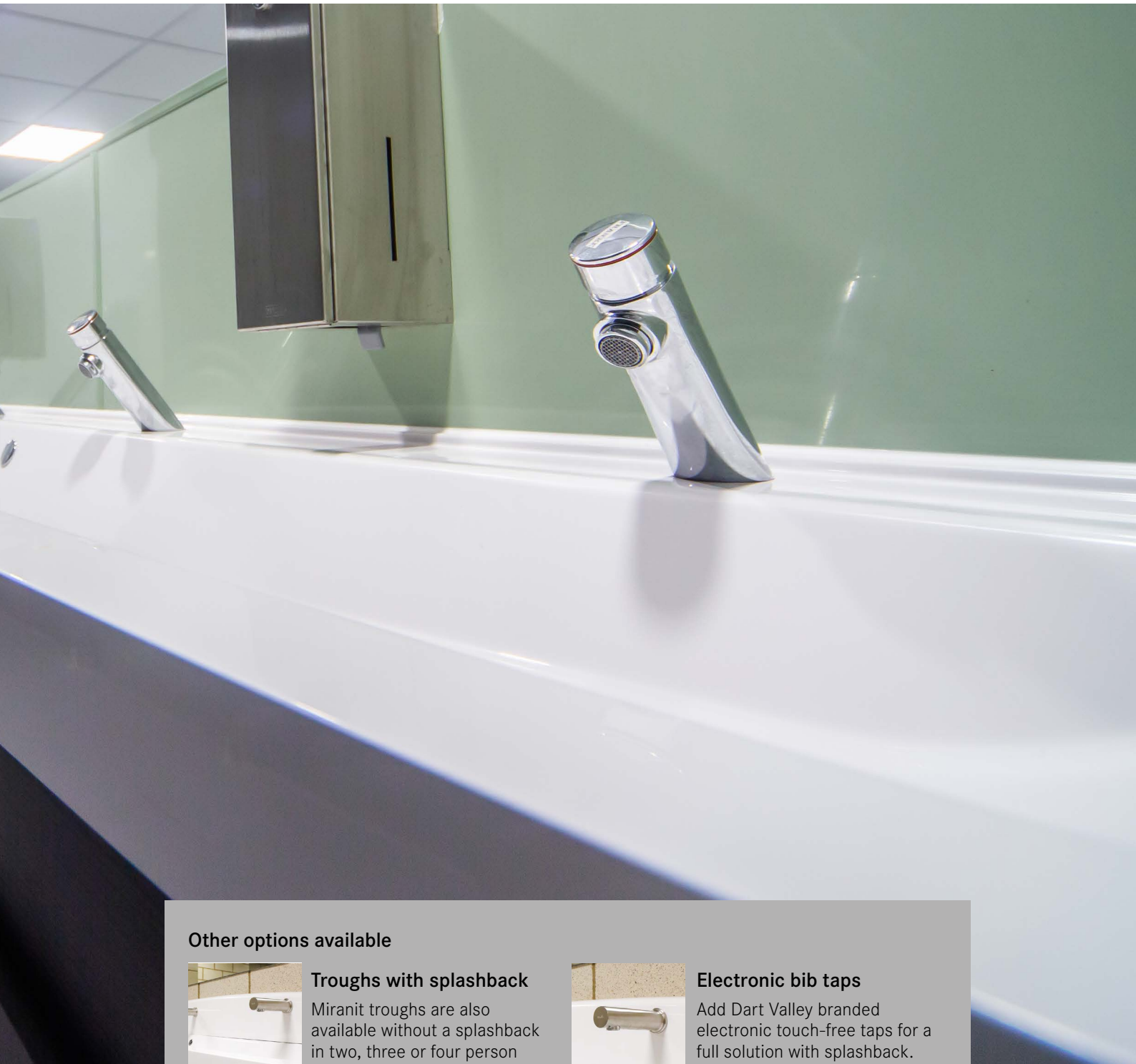
Impact resistant



SOLX2400MF3







#### Other options available



#### Troughs with splashback

Miranit troughs are also available without a splashback in two, three or four person lengths.



#### Electronic bib taps

Add Dart Valley branded electronic touch-free taps for a full solution with splashback.

# MIRANIT WASHTROUGHS

## Robust composite washtroughs that leave a long lasting impression

### Miranit composite washtroughs with splashback

The Miranit composite washtroughs with splashback allows bib taps to be fitted directly to the unit. The splashback conceals the pipework allowing for wall-mounted taps in spaces without a void behind the wall.

Franke's SOLX washtroughs are manufactured from a unique, robust material, making them ideal for any sports or entertainment establishment. Miranit is cast in a single mould without any seams or joints and has excellent material properties; it is temperature resistant up to 80°C and is shatterproof, unlike most ceramics on the market. Finished with a gel coat surface, Miranit is easy to clean and maintain and boasts excellent hygiene standards for busy environments such as sports stadiums.

### 2 PERSON MIRANIT COMPOSITE WASHTROUGH

Trough dimensions: 1200 x 360 x 480mm (W x H x D)

<b>SOLX1200SB</b>	203.0000.220	With splash-back
<b>SOLX1200SBE</b>	203.0000.221	With splash-back & electronic taps
<b>SOLX1200SBM</b>	203.0000.222	With splash-back & self-closing taps

### 3 PERSON MIRANIT COMPOSITE WASHTROUGH

Trough dimensions: 1800 x 360 x 480mm (W x H x D)

<b>SOLX1800SB</b>	203.0000.232	With splash-back
<b>SOLX1800SBE</b>	203.0000.233	With splash-back & electronic taps
<b>SOLX1800SBM</b>	203.0000.234	With splash-back & self-closing taps

### 4 PERSON MIRANIT COMPOSITE WASHTROUGH

Trough dimensions: 2400 x 360 x 480mm (W x H x D)

<b>SOLX2400SB</b>	203.0000.244	With splash-back
<b>SOLX2400SBE</b>	203.0000.245	With splash-back & electronic taps
<b>SOLX2400SBM</b>	203.0000.246	With splash-back & self-closing taps



Composite material



Hygienic finish



Easy to clean



Resistant up to 80°C



Impact resistant



SOLX2400SBE



## CASE STUDY

These troughs were installed at the prestigious Kia Oval cricket ground, Kennington.

[Read more online](#)

## Other options available



### Troughs without splashback

Miranit troughs are also available without a splashback in two, three or four person lengths.



### Self-closing taps

Add Franke branded self-closing taps from the F3 or F5 range for a full solution. Deck mounted and wall mounted versions available.

# FROM PLAYERS DRESSING ROOMS TO GYM TOILETS

## Water saving showers

### Showers for changing rooms

It is essential to consider showers as a critical component in athletic facilities, such as Olympic training camps, athletic centres and football academies. All users must have somewhere to shower before and after training, whether track and field, football, or swimming. In players changing rooms, public swimming pools or gym toilets, showers leave a lasting impression and are a significant factor when choosing a fitness or activity centre. These products are designed to be robust and withstand high footfall and continuous use whilst offering high energy efficiency and sustainability credentials.



304 stainless  
steel



Composite  
material



Touch free  
options



Easy to  
install



Water saving  
showerheads



Hygiene  
purge



#### F5E THERM SHOWER PANEL

Electronically controlled Miranit composite shower panel for wall mounting with thermostatic mixer.

- Shower head required\*
- Battery or power supply required
- Extension cable required

**F5ET2026** 210.0596.038

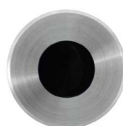


#### F5E THERM SHOWER PANEL

Electronically controlled stainless steel shower panel for wall mounting with thermostatic mixer.

- Shower head required\*
- Battery or power supply required
- Extension cable required

**F5ET2020** 210.0629.651



#### PROGRAMMABLE SENSOR AND SHOWER HEAD

Programmable shower sensor and Franke shower head offer compact solution in busy stadium shower rooms.

**AC02-021** 210.0665.775 Programmable sensor  
**SHAC0013** 210.0588.387 Comfort shower head



#### CEILING HEIGHT SHOWER TOWER

Ceiling height shower tower with high security shower head and tactile switch. With Concealed pipework, ligature resistant design and in-built TMV3.

**SH01-005** 210.0611.633



F5ET2020 & SH







Did you know we have over 40 different types of showers to suit a wide range of applications. Take a look at our wonderful shower solutions brochure for more options:

[View brochure](#)

SHAC0011

**VRAS**  
VED PRODUCT



### \*AQUAJET-COMFORT

Shower head with plastic jet face continuously adjustable between 13-23°.

**SHAC0011** 210.0588.384



### \*AQUAJET-SLIMLINE

Shower head with plastic jet face with anti-lime scale system and low aerosol formation.

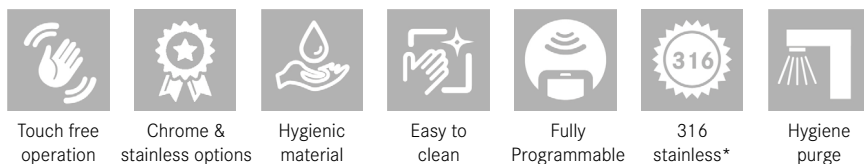
**SHAS0011** 210.0588.383

# COMPLETE THE WASHROOM

## Water saving taps

### Touch-free taps

The touch-free range of taps provides ultimate flexibility for sports and leisure environments, with three different ranges; Aquarius pillar spouts, Aquarius straight spouts and the classic range. The range of taps are all electronically controlled and provide a hygienic hand washing solution even in the busiest of environments. These WRAS approved faucets come in a range of finishes, from satin and high polish grade 316 stainless steel to high polished chrome-plated brass. The Aquarius range of taps is fully programmable with additional functions such as hygiene purge, lockouts and anti-vandal features. DVS and Franke handheld programmable remotes are sold separately.



\*Aquarius taps only



#### AQUARIUS 45° SPOUT

Touch-free spout with a satin finish and PEX hoses. Nominal 5 litre per minute flow rate.\*

**AT03-011** 208.0000.080 140mm project.



#### AQUARIUS STRAIGHT SPOUT

Touch-free spout with a satin finish and PEX hoses. Nominal 5 litre per minute flow rate.\*

**AT02-001** 208.0000.077 120mm project.  
**AT02-011** 208.0606.402 170mm project.



#### F5E-MIX ELECTRONIC PILLAR MIXERS

For connecting to hot and cold water via connecting hoses, with an integrated backflow preventer. Nominal 5 litres per minute flow rate.

**F5EM1001** 208.0563.548 battery  
**F5EM1003** 208.0563.549 mains



#### CLASSIC SWAN TAP

Touch-free Classic Swan taps with PEX hoses and nominal 5 litre per minute flow rate. Manufactured from chrome plated brass.\*

**AT01-011** 208.0617.515 145mm project.  
**AT01-001** 208.0481.307 145mm project.

AT03-011



#### Mains and battery kits

\*Mains or battery kits are required for Aquarius and Classic touch-free taps.

<b>AT00-220</b>	208.0659.897	Single station battery kit with anti-microbial valve
<b>AT00-221</b>	208.0628.714	Single station mains kit with anti-microbial valve
<b>AT00-222</b>	208.0628.716	Two station mains kit with anti-microbial valve
<b>AT00-223</b>	208.0628.717	Three station mains kit with anti-microbial valve

# COMPLETE THE WASHROOM

## Self-closing and lever taps

### Self-closing and lever taps

In highly frequented washrooms in various sports and leisure establishments, choosing taps that reduce water wastage and vandalism is essential while ensuring efficient hygiene.

The F5 range of taps excel in functionality and style and come in three ranges; electronic, self-closing and lever taps. The self-closing range is designed with the patented Franke Modular Innovation Cartridge (FRAMIC) that ensures stagnation-free, hydraulic control of the water flow and sets the highest hygiene standards. The F3 range is designed with a classic look in mind and is ideal for various sports and leisure facilities.



Chrome  
plated brass



Hygienic  
material



Easy  
to clean



Innovative  
FRAMIC cartridge\*

\*F5S taps only



#### F5S SELF-CLOSING PILLAR MIXER\*

F5S-Mix self-closing pillar mixer with adjustable, turn-proof temperature stop. Designed with the FRAMIC self-closing cartridge. Nominal 5 litres per minute flow rate.

**F5SM1001** 208.0563.593



#### F5S SELF-CLOSING PILLAR TAP\*

F5S self-closing pillar tap (pre-mixed) with adjustable flow duration. Designed with the FRAMIC self-closing cartridge. Nominal 5 litres per minute flow rate.

**F5SV1001** 208.0563.594



#### F5L-MIX PILLAR LEVER TAP

Designed with a mixing cartridge with ceramic disc technology and thermostatic protection from scalding. Nominal 5 litres per minute flow rate.

**F5LM1001** 208.0563.591 100mm project.

**F5LM1002** 208.0563.592 125mm project.



#### F3S SELF-CLOSING PILLAR TAPS

Hydraulically controlled self-closing function which prevents water from flowing back through the system. Nominal 3 litres per minute flow rate.

**F3SM1001** 208.0563.601 mixer tap

**F3SV1001** 208.0519.518 pre-mixed



**F5SM1001**





**\*The Franke Modular Innovation Cartridge (FRAMIC)**

The ceramic self-closing cartridge is the first of its kind in tap disc technology and enables a stagnation-free, hydraulic control of water flow ensuring perfect water hygiene. The operation of the cartridge is flow pressure-independent meaning drinking water is kept completely separate to the functional elements of the tap.

# ACCESSORISE

Three different ranges to suit all styles and specifications



## **DRYX500N hands in dryer**

High speed ABS hands-in hand dryer with integrated HEPPA filter and drip tray

Power output: 1250-1650W

Sound level: 65-69 dB

**DRYX500N** 201.0552.888

## High quality stainless steel accessories

Breaking away from mismatching sanitaryware and accessories can separate your washroom from the rest. Adding coordinating accessories such as matching soap dispensers, hand dryers and waste bins can bring the room to life and add value to the whole washroom. Accessories available in all three ranges Exos. (EXOS\*\*\*), Stratos (STRX\*\*\*) and Rodan (RODX\*\*\*).



### JUMBO TOILET ROLL HOLDER

**EXOS670X** 201.0479.701

**STRX670** 201.0000.060

**CHRX670** 201.0000.059



### DOUBLE TOILET ROLL HOLDER

**EXOS676X** 201.0479.684

**EXOS676B** 201.0479.685

**EXOS676W** 201.0479.687

**STRX672** 201.0515.181

**RODX672** 201.0000.056



### LIQUID SOAP DISPENSER

**EXOS618X** 201.0000.041

**EXOS618B** 201.0000.039

**EXOS618W** 201.0000.040

**STRX619** 201.0000.024

**RODX619** 201.0000.017



### HAND TOWEL DISPENSER

**EXOS637X** 201.0000.047

**EXOS637B** 201.0000.045

**EXOS637W** 201.0000.046

**STRX600** 201.0515.168

**RODX600** 201.0000.000



### HAND DRYER

**EXOS220X** 201.0479.675

**EXOS220B** 201.0479.676

**EXOS220W** 201.0479.677

**STRX220** 201.0473.301

**RODX310** 201.0000.132



### WASTE BIN

**EXOS605X** 201.0000.035

**EXOS605B** 201.0000.033

**EXOS605W** 201.0000.034

**STRX607** 201.0000.078

**RODX607** 201.0000.089

# SOAP AND SANITISER DISPENSERS

Robust washroom accessories



## **Rodan sanitiser dispenser**

Touch-free dispenser, suitable for lotions and disinfectants. 800ml soap tank.

**RODX627H** 201.0615.053



## **A45 soap dispenser**

Touch-free operated soap dispenser with 1.8 litre capacity. Mains PSU or battery operated.

**SD01-013** 201.0644.095





**SD01-003**



## WALL MOUNTED SOAP DISPENSER

Minimalistic easy to clean design. Mains PSU or battery operated.

**SD01-005** 201.0557.733 Nickel brush finish

**SD01-001** 201.0611.320 Chrome finish



## DECK MOUNTED TOUCH-FREE SOAP AND SANITISER DISPENSER†

Touch-free operation with clean design. 2 litre soap tank. Comes complete with mains and battery kit.

**SD01-003** 201.0624.810

Recommended

**AC00-008** 201.0631.912 Alcohol-free sanitiser (5L)



## DECK MOUNTED PUSH BUTTON SOAP DISPENSER\*

With a robust push button top and long spout with 140mm projection. 1 litre liquid soap tank

**SD80** 201.0000.022

Recommended

**SO10L** 220.0000.000 Liquid soap (10L)

## DECK MOUNTED SOAP DISPENSERS

The range of soap dispensers includes both touch-free and push-button versions. With deck and wall mounted options and various soap and sanitiser extras, this range provides a solution to suit any style of washroom.



Chrome material



Liquid soap and lotions



Push function\*



Touch free operation



Easy to clean

\*SD80 only

# SOAP AND SANITISER DISPENSERS

Robust touch-free washroom accessories



<b>SO10L</b>	220.0000.000	Replacement liquid soap (10L)
<b>AC00-052</b>	201.0624.809	Replacement hand sanitiser 70% alcohol
<b>EACCS055</b>	230.0601.308	Sanitiser conversion kit for Exos. & Rodan soap dispensers
<b>EACCS057</b>	230.0598.604	Sanitiser conversion kit for Stratos soap dispenser



#### **VANDAL RESISTANT TOUCH-FREE SOAP AND SANITISER DISPENSER**

Stainless steel touch-free dispenser suitable for liquid soaps and lotions. 800 ml soap tank. Suitable with 70% alcohol sanitiser (AC00-052).

**AC00-030** 201.0615.051



#### **EXOS. TOUCH-FREE SOAP DISPENSER**

Stainless steel touch-free dispenser suitable for liquid soaps and lotions. 800 ml soap tank.

**EXOS625X** 201.0000.044 Stainless steel front

**EXOS625B** 201.0000.042 Black front

**EXOS625W** 201.0000.043 White front



#### **STRATOS TOUCH-FREE SOAP DISPENSER**

Stainless steel touch-free dispenser suitable for liquid soaps and lotions. 800 ml soap tank.

**STRX625** 201.0000.042



#### **RODAN SANITISER/SOAP DISPENSERS**

Stainless steel touch-free dispenser suitable for lotions and disinfectants. 800 ml soap tank.

**RODX627H** 201.0615.053 touch-free sanitiser dispenser

**RODX625H** 201.0622.783 touch-free soap dispenser

#### **WALL MOUNTED SOAP DISPENSERS**

Manufactured from high-quality stainless steel, this durable range of soap dispensers is perfect for high use areas such as stadiums, leisure centres, and sports camps. The touch-free range releases a predefined amount of soap when triggered. The four different styles, Rodan, Stratos, Exos and vandal resistant, allow you to choose the perfect fit for the situation.



Touch free  
operation



304 stainless  
steel



Hygienic  
material



Easy to  
clean

# SOAP AND SANITISER DISPENSERS

## Flexible free-standing solutions for all establishments

### Liquid soap and hand sanitiser dispensers

Manufactured from high quality stainless steel, the free-standing dispensers are ideal for the entrance of various environments, including busy stadiums from cricket to football and rugby; these robust dispensers can withstand a high number of daily uses. The maintenance team can easily refill each unit through the key-lock fronts or access panel, and the free-standing design and battery-powered options add ultimate flexibility when positioning.



Touch free operation



Liquid soap & sanitiser



Hygienic material



Easy to clean



304 stainless steel



#### DVS TOUCH-FREE HAND SANITISER DISPENSER WITH STAND

High quality stand with a small footprint which includes a DVS branded bib sanitiser dispenser and concealed 1.6 -2 litre refillable bottle.\* Please note the DVS branded dispenser is only suitable for alcohol-free sanitiser.

**AC00-050** 201.0624.808

**AC00-008** 201.0631.912 Alcohol-free 5 litre gel refill



#### TOUCH-FREE SANITISER/SOAP DISPENSER WITH SLIMLINE STAND

Slimline stand with a small footprint and anti-spill tray. All touch-free dispensers have inspection window and key lock.\*

**RODX627H-STD37** 201.0624.739 Rodan sanitiser dispenser

**RODX625H-STD37** 201.0624.735 Rodan soap dispenser

**STRX627-STD37** 201.0631.094 Stratos sanitiser dispenser

**STRX625-STD37** 201.0624.801 Stratos soap dispenser

**EXOS625X-STD37** 201.0624.803 Exos. soap dispenser

**EXOS627X-STD37** 201.0631.096 Exos. sanitiser



#### TOUCH-FREE SOAP/HAND SANITISER DISPENSERS WITH PREMIUM STAND

Premium stand with a small footprint and anti-spill tray. All touch-free dispensers have inspection window and key lock.\*

**RODX627H-STD36** 201.0624.740 Rodan sanitiser dispenser

**RODX625H-STD36** 201.0624.737 Rodan soap dispenser

**STRX627-STD36** 201.0631.097 Stratos sanitiser dispenser

**STRX625X-STD36** 201.0624.802 Stratos soap dispenser

**EXOS625X-STD36** 201.0624.804 Exos. soap dispenser

**EXOS627X-STD36** 201.0631.098 Exos. sanitiser

\*Junior heights and manual dispensers are also available.

RODX627H-STD36



Completely touch-free hand washing places for optimum hand hygiene



## Touch-free sanitiser dispenser station

Touch-free sanitiser dispenser station with built in sensors, manufactured from quality stainless steel. A clean shot of liquid soap is dispensed automatically without any need to touch the unit, reducing cross contamination and substantially improving hygiene in the washroom.

**AC00-053** 201.0657.799



# KEEP VISITORS HYDRATED

Drinking fountains for all types of facilities



## **BREEAM fixing kit**

Breeam fixing kit for floor standing chilled drinking fountains. The fixing kit allows the drinking fountain to be placed against the wall and floor, concealing any pipe work or wires, adhering to BREEAM criteria. Dimensions: 354 x 924 x 100 mm (W x H x D)

**ANMX315** 213.0000.000



ANMX309

**STAINLESS STEEL CENTINEL DRINKING FOUNTAIN**

Manufactured from 1.2mm thick grade 304 stainless steel. Supplied complete with 19mm waste.

**G20100N** 213.0000.011 Bubblers only

**G20109N** 213.0000.013 Bubblers & bottle filler

**STAINLESS STEEL DRINKING FOUNTAIN**

Manufactured from 1.2mm thick grade 304 stainless steel. Designed with a flat pressed rectangular top with rounded edges.

**ANMX300** 213.0000.024 Bubblers only

**ANMX306** 213.0000.002 Bubblers & bottle filler

**STAINLESS STEEL DRINKING FOUNTAIN WITH PEDESTAL**

Manufactured from 1.2mm thick grade 304 stainless steel. Designed with a flat pressed rectangular top.

**ANMX301** 213.0000.025 Bubblers only

**ANMX307** 213.0000.003 Bubblers & bottle filler

**FLOOR STANDING CHILLED DRINKING FOUNTAIN WITH WATER FILTER**

The fountain is for connection direct to the water mains to supply an unlimited amount of fresh chilled water.

**ANMX308** 213.0000.004 Bubblers only

**ANMX309** 213.0000.005 Bubblers & bottle filler

**FRANKE DRINKING FOUNTAINS**

The free-standing or wall-mounted drinking fountains, made of stainless steel, are the perfect addition to ensure outstanding customer satisfaction. Combined with bubblers and bottle fillers, they can quench the thirst of any visitor, from sports enthusiasts to music-loving concertgoers and everyone in between.



304 stainless steel



Chilled options



Easy to install



Breeam fixing kit available

breeam

CE

WRAS  
APPROVED PRODUCT

# SANITARYWARE

## High end alternative washrooms



### Flush valve kits available

We have flush kits available for use with all our WCs, see pages 32-33 for more details.



### Concealed plastic cistern kit

Includes WRAS approved side entry valve, back to pan connector & concealed vertical cistern.

<b>WC02-013</b>	209.0583.507	1 ½"
<b>WC02-014</b>	209.0610.923	2"



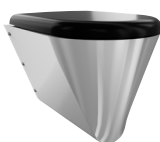
CMPX592B



## CAMPUS FLOOR STANDING PUSH FIT WC PAN

Manufactured from grade 304 steel. Flushing certified to EN 997, concealed flushing rim with min. 4 litre flushing capacity.

<b>CMPX597B</b>	205.0000.012	Black seat and lid
<b>CMPX597G</b>	205.0000.013	Grey seat and lid
<b>CMPX597W</b>	205.0000.015	White seat and lid



## CAMPUS WALL MOUNTED PUSH FIT WC PAN

Manufactured from grade 304 steel. Flushing certified to EN 997, concealed flushing rim with min. 4 litre flushing capacity.

<b>CMPX592B</b>	205.0000.002	Black seat and lid
<b>CMPX592G</b>	205.0000.003	Grey seat and lid
<b>CMPX592W</b>	205.0000.005	White seat and lid



## GRP BACK TO WALL WC

High-security WC pan, manufactured from high performance glass reinforced polyester (GRP) material. Dimensions: 400 x 420 x 510mm (w x h x d)

<b>VR01-010</b>	205.0630.320
-----------------	--------------

## SANITARYWARE

Modern washrooms need to be functional, stylish and long-lasting. Franke has designed a range of robust sanitaryware for various facilities, whether a simple renovation or complete washroom revamp.

Franke's stainless steel and GRP WCs are perfect for busy entertainment and sports venues as the range is manufactured from highly robust and hard-wearing materials. The Dart Valley branded flush valves and cisterns can complete any busy washroom and provide a water-saving solution.



304 stainless steel



Glass reinforced polyester



Robust construction



Easy to clean

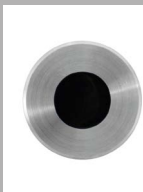


Easy to install



# PUBLIC WASHROOMS

Save water with standard and waterless urinals



## Programmable urinal sensor

Wall mounted brushed stainless steel urinal sensor complete with 3m extension cable.

**AC02-023** 209.0628.712



## Urinal flush controls

Flushmatic surface mount kit (battery) complete with solenoid valve, for cistern fed flushing.

**UC01-005** 205.0611.714





#### URINAL POD

Stainless steel urinal pod with punched waste. Designed to be wall mounted with a single concealed urinal.

**CMPX539P** 205.0664.928 342 x 647 x 313 mm



#### WATERLESS URINAL SLAB

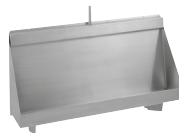
Stainless steel waterless urinal slabs, easy to maintain with unique key system, available with left and right hand wastes.

**G20125L** 205.0560.088 1200mm left hand

**G20125R** 205.0000.066 1200mm right hand

**G20126L** 205.0553.762 1800mm left hand

**G20126R** 205.0553.763 1800mm right hand



#### CENTINEL SLAB URINAL

Stainless steel urinal with concealed sparge pipe. Bespoke lengths and exposed sparge pipe options are also available.

**CEN120C** 205.0651.539 1200 x 300 x 555mm (9l)

**CEN150C** 205.0651.635 1500 x 300 x 555mm (9l)

**CEN180C** 205.0651.540 1800 x 300 x 555mm (13.5l)

**CEN240C** 205.0651.631 2400 x 300 x 555mm (13.5l)

#### STAINLESS STEEL URINALS

Over half of 'domestic' water used in commercial premises can be due to urinals operating without flush controls; therefore, adding the proper flush controls or installing waterless products can vastly reduce water bills with minimal initial outlay.

All Franke branded urinals are manufactured from robust 1.2mm thick grade 1.4301 (304) stainless steel with a satin finish. The urinals have been specifically designed for easy installation and maintenance.



Water saving



Efficient design



304 stainless steel



Easy maintenance



Robust material

# WC AND URINAL FLUSHING

## Water saving flush valves kits and programmable sensors

### Flush valves

The DVS branded flush valves are ideal for all high usage washrooms such as football stadiums and training grounds as they provide reliable water-saving benefits. The flush valve can be set to flush automatically or by wave operation, reducing the risk of cross-contamination. Both auto and wave options have dual flush capability, although a single 4-litre flush is recommended. The flush valve has been designed to be compatible with most WC cisterns on the market. Therefore, there is no need to change the existing plumbing as it can be retrofit to existing installations.



Non-touch sensor\*



Fully programmable\*



Adjustable settings



Dual flush options



Water cost saving up to 30%



### WC FLUSHVALVE KIT WITH PROGRAMMABLE SENSOR

Low voltage WC flushvalve kit with programmable sensor.

**WC03-013** 209.0610.660 1 1/2" base

**WC03-014** 209.0611.269 2" base

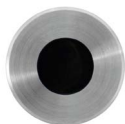


### WC FLUSHVALVE KIT WITH WAVE-ON SENSOR

Standard WC flushvalve kit with vandal resistant wave-on sensor and 3m cable.

**WC03-022** 209.0606.400 1 1/2" base

**WC03-023** 209.0643.162 2" base



### PROGRAMMABLE URINAL SENSOR

Wall mounted brushed stainless steel urinal sensor complete with 3m extension cable.

**AC02-023** 209.0628.712

Required

**AT00-221** 208.0628.714

Single station mains kit with anti-microbial valve  
(other station kits available)



### FLUSHMATIC DOWNLIGHTER KIT

Flushmatic downlighter kit designed for suspended ceilings, mains operated. Ideal for urinal troughs when individual sensors can't be used.

**UC01-024** 205.0611.785



WRAS Approval for  
flushvalve only



**CASE STUDY**

These flush valves were installed at the Tottenham Hotspur Football Stadium, London.

[Read more online](#)

**Water conservation**

DVS branded flush controls typically save 30% of water usage and costs. The range has been designed with adjustable settings for optimum flush, purge, lock-outs and more. The DVS flush controls exceed the BREEAM 6 litre base level for water efficiency. The WRAS approved kits are optimised for water conservation operating as low as 4 litres per flush.

# CLEANING SOLUTIONS

Janitorial, cleaning and general purpose sinks



## Crosshead bib taps

Complete the bucket sink with bib taps. Conforms to BS5412 standard. F1072N extension piece available (two required).

**F1071/3N** 208.0574.188



## Monobloc mixer

The monobloc mixer tap is ideal for canteen or staff room sinks. Conforms to BS5412 standard.

**F1059N** 208.0574.216





## FLOOR STANDING STAINLESS STEEL JANITORIAL UNIT

Manufactured from grade 1.4301 (304) stainless steel (lower bowl 0.9mm thick) complete with monobloc mixer.

**G20050N** 207.0000.058



## FLOOR STANDING STAINLESS STEEL BUCKET SINK

Manufactured from grade 1.4301 (304) stainless steel, material thickness 1.2mm, with splash back, hinged grating, 38mm BSP waste fitting.

**G21663N** 207.0000.060



## REVERSIBLE SINKS

Manufactured from grade 304 stainless steel these multi-purpose sinks are ideal for canteens or staff room sinks.

**F0306NP** 203.0529.988 Single bowl sink

**F0309NP** 203.0529.985 Bowl 1/2 sink

## MAINTENANCE

Cleaning and janitorial can often be an afterthought when designing and specifying products for large establishments such as sports stadiums and event venues. However, maintaining a building to a high standard is one of the most critical factors for facilities with a high footfall.

Franke's cleaning and janitorial range includes general kitchen sinks, bucket and cleaners sinks, janitorial units, and various utility sinks. All manufactured from grade 304 stainless steel guarantee the best quality to maintain large establishments to a high standard.



Quality stainless steel



Easy to clean



Low maintenance



Robust materials

G20050N





# CATERING SOLUTIONS

## Stainless steel solutions for all recreational environments

### Catering and hand washing

Franke Water Systems has a range of solutions for football stadiums, bowling alleys, sports centres and more. The range includes catering sinks, preparation tables and a variety of wall shelves. Manufactured from grade 304 stainless steel, this material is highly durable, resistant to corrosion and long-lasting. Stainless steel is the perfect material for any large catering environment, from stadium canteens to stadium courts and restaurants. A range of optional supports, stands and shelves (sold separately) and complementary parts including taps and waste kits provide a complete solution.



304 stainless steel



Robust construction



Easy to clean



Easy installation



#### SINGLE BOWL SINGLE DRAINER MINI CATERING SINK

Manufactured from 1.2mm thick austenitic grade stainless steel polished to a satin finish. Dimensions: 1000 x 900 x 600mm (W x H x D)\*

<b>E20601L</b>	214.0000.000	Left hand drainer
<b>E20601R</b>	214.0000.004	Right hand drainer



#### SINGLE BOWL MIDI CATERING SINK

Manufactured from 1.2mm thick austenitic grade stainless steel polished to a satin finish. Dimensions: 750 x 900 x 650mm (W x H x D)\*

<b>E20608N</b>	214.0493.164
----------------	--------------



#### MINI WALL TABLES

Mini wall tables are manufactured from 1.2 thick austenitic grade stainless steel polished to a satin finish.\*

<b>F20601Z</b>	214.0000.121	1200 x 900mm
<b>F20600Z</b>	214.0000.119	900 x 600mm



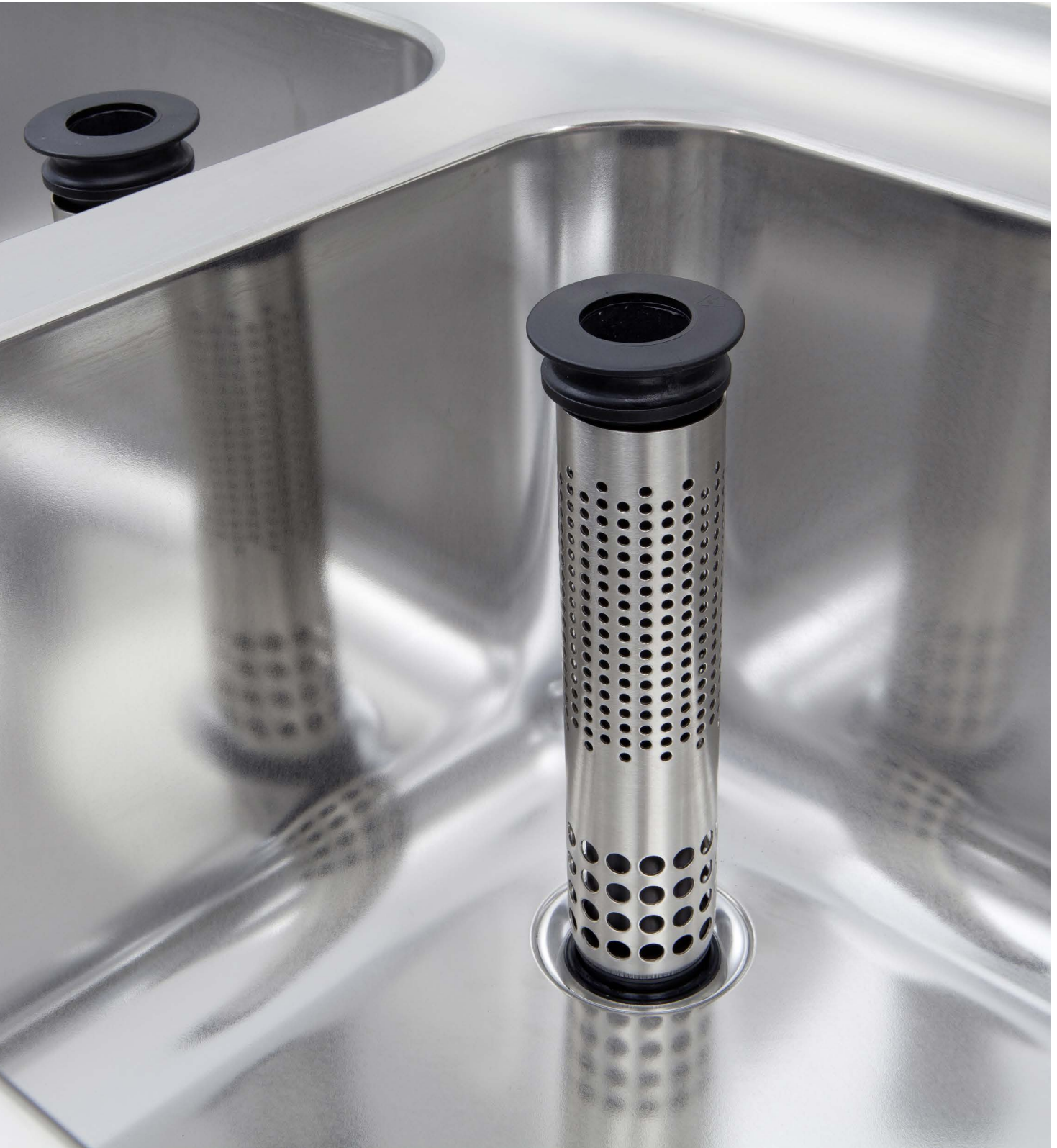
#### WALL SHELVES

Manufactured from 1.2mm thick grade 1.4016 (430) stainless steel polished to a satin finish.

<b>F10512N</b>	214.0000.168	900 x 300mm
<b>F10515N</b>	214.0000.171	1800 x 300mm

Additional variants and sizes are available, please get in touch to request more information.

\*Stand pack sold separately.



# ACCESSIBLE FOR EVERYBODY

## Doc M sanitaryware

### Doc M sanitaryware support packs

At least one accessible toilet must be available in public buildings to comply with the building regulations. Franke has designed several products with various considerations, including aesthetics, durability and the user's specific needs. The range is suitable for many education establishments. It includes stainless steel and epoxy coated coloured grab rails to make the washroom experience as easy as possible for whoever the user may be.

The Contina grab rails made of non-slip stainless steel will allow you to grip the rail even if wet. The Doc M compliant range includes various support rail packs and full Doc M sanitary and support rail packs. A bespoke range of grab rails is available to create a unique washroom style or suit specific needs; any colour and length are possible.

### WC packs include:

- 4 x stainless steel grab rails 600mm
- 1 x Stainless steel drop down rail 760mm (blue), 850mm (stainless)
- Stainless steel back rests and cushion 24mm (blue), 150mm (stainless)

Accessories, taps and basins sold separately

### Features

- Slip resistant high quality stainless steel
- Accessible tap with ergonomic lever
- Raised height WC
- Comfortable PU foam back rest cushion
- Matching stainless steel accessories available as extras

<b>CNTX106S</b>	202.0574.570	Contina stainless steel WC pack
<b>GRBX206BNP</b>	202.0572.501	Grabex blue coated steel WC pack
<b>ANMX150L</b>	203.0611.023	Stainless steel hand rinse basin, left hand tap hole
<b>ANMX150R</b>	203.0611.022	Stainless steel hand rinse basin, right hand tap hole
<b>F5LM1010</b>	208.0511.861	F5 single-lever pillar mixer tap



304 stainless steel



Doc M compliant



LABC and LBSS approved layouts



High quality materials



breeam







## Northern office

Franke Water Systems  
14 Napier Court  
Gander Lane  
Barlborough  
S43 4PZ  
Phone +44 (0)1246 458900  
[ws-info.uk@franke.com](mailto:ws-info.uk@franke.com)  
[www.franke.co.uk](http://www.franke.co.uk)

## Southern office

Dart Valley Systems  
Kemings Close  
Long Road  
Paignton, Devon  
TQ4 7TW  
Phone +44 (0) 1803 529021  
[sales@dartvalley.co.uk](mailto:sales@dartvalley.co.uk)  
[www.dartvalley.co.uk](http://www.dartvalley.co.uk)

