

ANMW421

QUADRO double washbasin

QUADRO double washbasin made of MIRANIT resin-bonded mineral material with smooth, pore-free surface (temperature resistant up to 80°C). Colour Alpine white. With two seamless, rectangular bowls, without overflow. Mounting on washbasin back panel. Rear contoured edge. Three-sided apron 60 mm (H). With tap holes 35 mm (D). Mounting material included.

Dimensions 1400 x 125 x 530 mm (W x H x D)
Bowl dimensions 580 x 90 x 360 mm (W x H x D)

Technical data

Bowl position	Center
Bowl height	90mm
Bowl depth	360mm
Bowl shape	Rectangle
Bowl width	580mm
Colour	Alpine white
Distance between bowls	700mm
Material	Mineral material
Material code	Miranit
Overall depth	530mm
Overall height	125mm
Overall width	1,400mm
Overflow	No
Rear upstand	Yes
Siphon included	No
Splash back	No
Number of tap holes	2
Tap hole diameter	35mm
Tap hole position	Middle
Tap ledge	Yes
Type of mounting	Wall mounting
Waste hole position	Center back
Waste hole projection	185mm
Waste kit included	No
Waste size	DN 32

KWC

QUADRO double washbasin

Model line: **QUADRO** | **ANMW421**

Optional accessories



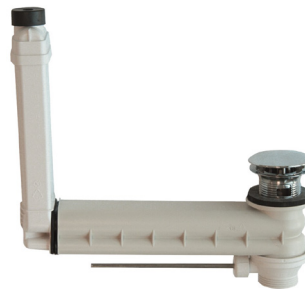
Strainer waste

ZANMW901
Vanity top



Dome waste valve

ZANMW900
Vanity top



Drain and overflow set

ZANMW902
Vanity top



Trap

XINX140
Vanity top