

# WONDERFUL EDUCATION SOLUTIONS





# FRANKE WATER SYSTEMS

World leader in supplying education solutions

*“Franke’s brand promise is to ‘Make It Wonderful’, whether you are a business partner or an end user”*

Over 230 years of experience

Franke has been specialising in products for commercial washrooms for over 230 years and Dart Valley Systems are a market leader in the field of water saving products and automatic washroom solutions, supplying products into the healthcare market for over 35 years. Together Franke and DVS provide one wonderful solution to specialist applications.

Designed with the users in mind, the Franke’s education range allows you to create an inviting and easily maintained washroom no matter the age range, type of establishment, number of users or size of washroom. With a number of complementary product ranges you can create a consistent look across multiple washroom types such as; separate genders, communal hand washing, and less-abled areas.



Contents

Accreditations	4
Miranit Washino washtroughs	6
Miranit washbasins	8
Miranit washtroughs	10
Planox stainless steel washtroughs	12
Circular washtroughs	14
Higher education solutions	16
Shower panels	18
Touch-free taps	20
F3 & F5 taps	22
Stainless steel accessories	24
Soap and sanitiser dispensers	26
Floor standing soap and sanitiser dispensers	30
Sanitaryware	32
Stainless steel urinals	34
Drinking fountains	36
Cleaning and janitorial solutions	38
Catering solutions	40
Less-abled and accessibility	42



**BREEAM** Franke can assist specifiers in achieving BREEAM points for projects with a range of water and energy efficient products.

**UNIFIED WATER LABEL** Part of the BMA, the water efficient product label focuses on specific water saving products that are particularly water efficient.



**NSF TMV3**  
TMV3 scheme ensures that products are suitable for healthcare environments and provide a safe water supply.



**WRAS** promote, encourage and enforce the prevention of waste, undue consumption, misuse, or contamination of water.

**HOLDERS OF ISO9001** globally recognised rigorous set of standards for quality management.

**HOLDERS OF ISO14001** globally recognised rigorous set of standards for environmental management

**ACCREDITED CONTRACTOR CHAS** The Contractors Health and Safety Assessment Scheme improves health and safety standards across the UK.

**SAFE CONTRACTOR APPROVED**  
SafeContractor delivers a tailored health and safety accreditation.

**CONSTRUCTIONONLINE** Help buyers to simplify and speed up their search, improving resource and cost efficiency through the validation of purchasing decisions. Based on suppliers completion of multiple document working to the PAS 91 criteria.

**RIBA CPD** We offer a choice of RIBA approved CPD interactive seminars – a must for anyone specifying washrooms for commercial projects.

**BMA** The Bathroom Manufacturers Association acts as an information highway between Industry Government and the consumer on all issues that affect the bathroom business in the UK.

**WELS** Australian Standards relating to product quality, including health and safety efficiency.



**CE MARKING** is applied to products to indicate conformity to the current regulations. Certifications can be found on our websites.



**NBS SOURCE** is a tool that creates a single source for product information and data. There are over 200 products listed and a range of corresponding BIM models available for both Franke and Dart Valley branded ranges.



**WATER TECHNOLOGY LIST (WTL)** WTL provides details of products that qualify for the enhanced capital allowance scheme, both Franke and Dart Valley branded ranges are listed in the database.

# PRIMARY, PRE-SCHOOL AND NURSERIES

Learning through play



**F3 self-closing bib tap**  
Hydraulically controlled with a self-closing, stepless adjustment of flow duration.  
**F3SV1001** 208.0519.518



**F5 lever pillar mixer tap**  
For connecting to hot and cold water with thermostatic protection, 100mm projection.  
**F5LM1001** 208.0563.550

**SANW211P**  
**F3SV1001**



### WASHINO CHILDREN'S WASH-AND-PLAY TROUGH

The playful wave and pleasant warm surface of the Miranit material are a temptation for children to wash their hands.

Dimensions: 1100 - 1600 x 240 x 450mm (W x H x D)

**SANW200P** 203.0000.177 Two tap holes - 1100mm

**SANW215P** 203.0000.183 Three tap holes - 1600mm



### WASHINO SPLIT LEVEL CHILDREN'S WASH-AND-PLAY TROUGH

The playful wave and pleasant warm surface of the Miranit material are a temptation for children to wash their hands. The split level design makes it easy for children of different heights to wash their hands comfortably.

Dimensions: 2100 x 340 x 470mm (W x H x D)

**SANW211P** 203.0473.924 Right hand lower

**SANW212P** 203.0473.925 Left hand lower

**SANW205P** 203.0000.179 Straight

### PRIMARY EDUCATION WASHROOMS

There are many ways to encourage good personal hygiene in children, one of which is creating a pleasant and playful environment, therefore learning by play is an important factor in today's educational washrooms.

The playful design of wave-shaped basins are practical for children of different ages, with an indent designed to reduce the distance to the taps, increasing accessibility.



Composite material



Hygienic finish



Easy to clean



Fun, playful design



Impact resistant



# PRIMARY EDUCATION

Warm to touch, low maintenance  
Miranit washbasins



**F5 electronic pillar mixer**  
Battery operated, for connecting to hot and cold water. 4.8 litres per minute flow rate (3 bar).  
**F5EM1001** 208.0563.548



**F5 self-closing pillar mixer tap**  
For connecting to hot and cold water. 4.8 litres per minute flow rate (3 bar).  
**F5SM1001** 208.0563.593



**GAMBA CHILDREN'S MIRANIT WASHBASIN**  
Manufactured from Miranit granite composite with asymmetric tap landing and storage space. These compact basins are perfect for classrooms or hallways.  
Dimensions: 190 x 450 x 390 mm (W x H x D)  
**ANMW198** 203.0000.127



**LUNA CHILDREN'S MIRANIT WASHBASIN**  
Manufactured from Miranit granite composite with a round moulded form that is flattened to the rear. Includes a tap landing and storage space.  
Dimensions: 450 x 190 x 390 mm (W x H x D)  
**ANMW199** 203.0000.128



**MIRANIT CLASSROOM SINK WITH DRAINER**  
Manufactured from Miranit granite composite, this sink is perfect for classrooms with arts and crafts areas, complete with drainer for soaps and lotions.  
Dimensions: 600 x 150 x 450 mm (W x H x D)  
**ANMW322** 203.0000.016 1 tap hole  
**ANMW323** 203.0000.017 without tap hole

**MIRANIT WASHBASINS FOR PRIMARY EDUCATION**  
The compact size of these solid surface basins is perfect for primary school washrooms and classrooms. Manufactured from Miranit granite composite material which is easy to clean, hygienic and temperature resistant up to 80°C. Miranit has a smooth, pore-free and high-gloss Gelcoat surface which is cast in a single mould without any seams or joints. Miranit is extremely hard-wearing and impact resistant and has been designed to withstand years of high use.

Composite material	Hygienic finish	Easy to clean	Resistant up to 80°C	Impact resistant

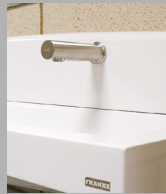
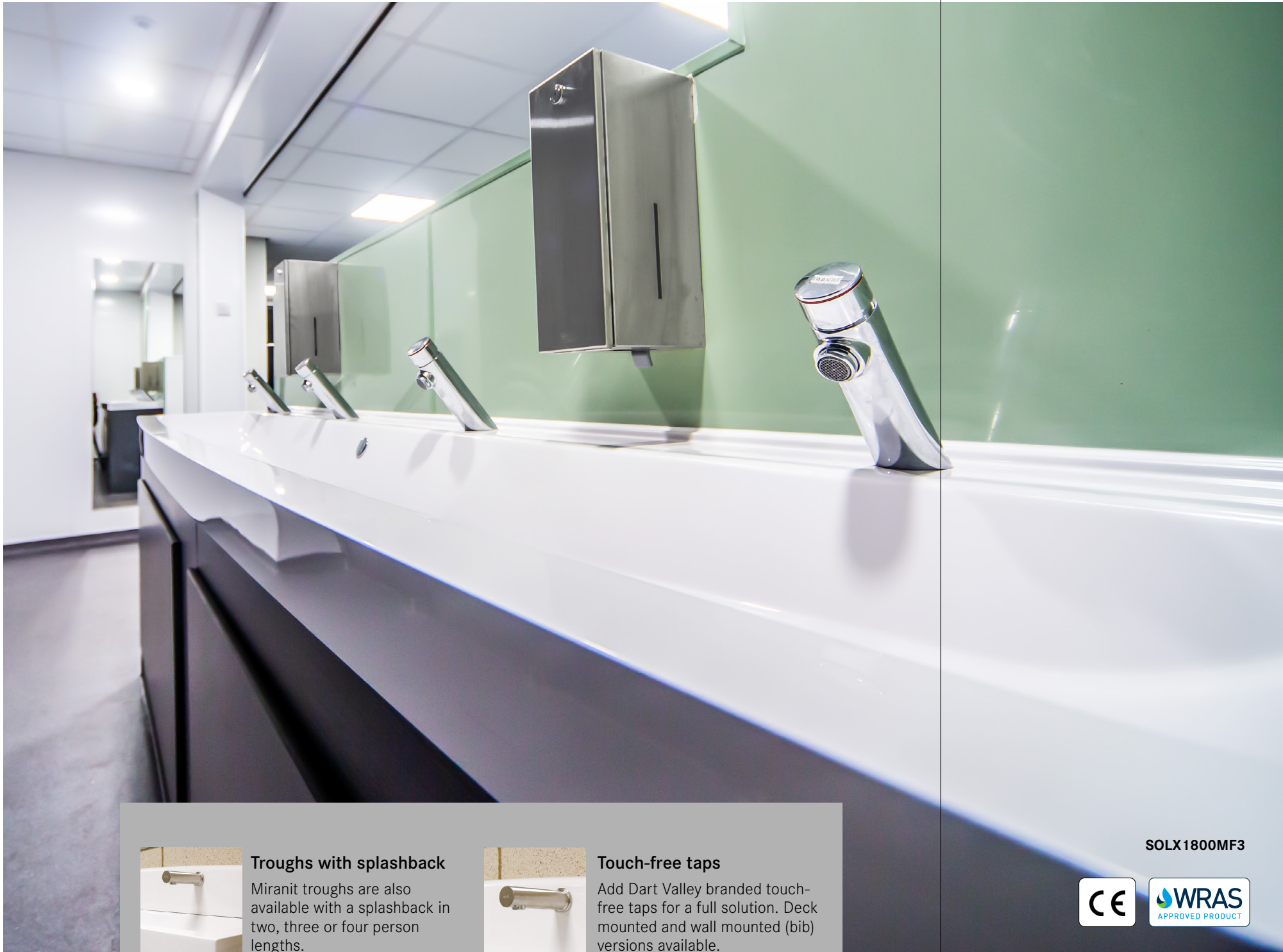


ANMW198



# SECONDARY EDUCATION

## Miranit washtroughs



**Troughs with splashback**  
Miranit troughs are also available with a splashback in two, three or four person lengths.



**Touch-free taps**  
Add Dart Valley branded touch-free taps for a full solution. Deck mounted and wall mounted (bib) versions available.



**2 PERSON MIRANIT COMPOSITE WASHTROUGH**

Trough dimensions: 1200 x 170 x 480mm (W x H x D)

<b>SOLX1200</b>	203.0000.217	Without tap holes
<b>SOLX1200T</b>	203.0000.226	With tap holes
<b>SOLX1200E</b>	203.0000.218	With electronic taps
<b>SOLX1200MF3</b>	203.0547.761	With self-closing taps



**3 PERSON MIRANIT COMPOSITE WASHTROUGH**

Trough dimensions: 1800 x 170 x 480mm (W x H x D)

<b>SOLX1800</b>	203.0000.229	Without tap holes
<b>SOLX1800T</b>	203.0000.238	With tap holes
<b>SOLX1800E</b>	203.0000.230	With electronic taps
<b>SOLX1800MF3</b>	203.0547.762	With self-closing taps



**4 PERSON MIRANIT COMPOSITE WASHTROUGH**

Trough dimensions: 2400 x 170 x 480mm (W x H x D)

<b>SOLX2400</b>	203.0000.241	Without tap holes
<b>SOLX2400T</b>	203.0000.249	With tap holes
<b>SOLX2400E</b>	203.0000.242	With electronic taps
<b>SOLX2400MF3</b>	203.0547.763	With self-closing taps

**MIRANIT COMPOSITE WASHTROUGHS**

Miranit troughs are ideal for secondary education areas as they are manufactured from a robust solid surface material. Available in 2, 3 or 4 person wash stations the troughs are ideal for even the largest secondary schools with high footfall. Different options available; with or without tap holes, with electronic or self-closing taps and splash-back options.



Composite material



Hygienic finish



Easy to clean



Resistant up to 80°C



Impact resistant

SOLX1800MF3





# SECONDARY EDUCATION

## Seamlessly welded stainless steel washtroughs

### Stainless steel washtroughs

The Planox range of washtroughs offers a functional, easy-to-clean and user-friendly solution whilst ensuring optimum hygiene. Manufactured from 1.2mm thick grade 1.4301 (304) stainless steel with a satin polished finish, these troughs can withstand high usage areas such as secondary schools, higher education and specialist colleges. The troughs are seamlessly welded using an innovative robotic laser, making them highly resistant to dirt and bacteria. The 1cm lowered tap ledge stops water from spilling on to the floor, preventing hazards and maintaining excellent levels of hygiene.

#### Planox washtroughs

PL6T-UK	203.0564.759	600mm trough with tap ledge
PL8T-UK	203.0564.760	800mm trough with tap ledge
PL12T-UK	203.0563.654	1200mm trough with tap ledges
PL16T-UK	203.0564.761	1600mm trough with tap ledge
PL18T-UK	203.0564.762	1800mm trough with tap ledge
PL24T-UK	203.0564.763	2400mm trough with tap ledge
PL30T-UK	203.0564.767	3000mm trough with tap ledge

Also available with deck mounted taps, see brassware on pages 20-25

#### Planox washtroughs with bib taps


PL6-UK	203.0564.719	600mm trough without tap ledge
PL8-UK	203.0564.751	800mm trough without tap ledge
PL12-UK	203.0564.752	1200mm trough without tap ledge
PL16-UK	203.0564.754	1600mm trough without tap ledge
PL18-UK	203.0564.755	1800mm trough without tap ledge
PL24-UK	203.0564.757	2400mm trough without tap ledge
PL30-UK	203.0564.758	3000mm trough without tap ledge

Also available with bib taps, see brassware on pages 20-25


#### Optional shrouds

Conceal plumbing by adding a shroud (available in two sizes).


PL-SHROUD LRG	203.0563.655	23 x 305 x 244mm
PL-SHROUD SML	203.0564.788	123 x 305 x 241mm



304 stainless steel



Bespoke lengths



Hygienic material



Easy to clean



Seamlessly welded



Bespoke lengths between 600mm and 3000mm, with/without splashback or tap ledge are also available. Please call us on 01246 458900 to discuss your requirements.

PL24-UKMF3



#### Stratos touch-free soap dispenser

Infrared touch-free sensor activation and 800ml tank.

**STRX625** 201.0000.026



#### Stratos touch-free paper towel dispenser

Infrared sensor and integrated tear-off edge.

**STRX630** 201.0000.006



# SECONDARY EDUCATION

## Anti-bullying, inclusive solutions



**Customise**  
Our stainless steel circular washtroughs can be customised to suit your specification. Our in house design team can tailor the washtroughs to meet your requirements whether it is material finish, water supply from the ceiling through the centre column or alternative soap dispenser options.

SANX605



**6 PERSON CIRCULAR WASHTROUGH**

Manufactured from 304 stainless steel.  
Dimensions: 1000 x 1205 x 1000mm (W x H x D)

**SANX600** 203.0000.203 With self-closing taps

**SANX610** 203.0000.205 With electronic taps

With soap dispensers

**SANX605** 203.0000.204 With self-closing taps

**SANX615** 203.0000.206 With electronic taps



**8 PERSON CIRCULAR WASHTROUGH**

Manufactured from 304 stainless steel.  
Dimensions: 1300 x 1220 x 1300mm (W x H x D)

**SANX800** 203.0000.211 With self-closing taps

**SANX810** 203.0000.213 With electronic taps

With soap dispensers

**SANX805** 203.0000.212 With self-closing taps

**SANX815** 203.0000.214 With electronic taps

**CIRCULAR WASHTROUGHS**

The washtroughs have been designed to reduce the risk of bullying. The circular design is less intimidating as it gives students ample space around the area leaving them feeling less conscious about being pushed into a corner.

Franke's range of circular and semi-circular washtroughs provide an ideal solution where space is limited and are suitable for up to 4 users for the semi-circular version and up to 8 users for the circular version. Manufactured from a high grade 304 stainless steel and the best quality fittings, they offer additional benefits over the use of conventional washbasins. These washtroughs are highly durable to withstand intensive use in busy environments.

304 stainless steel

Easy to install

Robust construction

Anti-bullying design

Tamper proof screws



# HIGHER EDUCATION

## Student accommodation

16 – 17



### Bespoke products

With state-of-the-art manufacturing facilities and our in-house design team, we are able to tailor our products in accordance with your specification. View our case study for Sir John Cass Hall, which showcases custom made stainless steel worktops and sinks - <https://fran.ke/74U8u1H>

BESPOKE



### RENO SINGLE BOWL TAP AND SINK PACK

Reversible inset single bowl sink with F1059N mono mixer tap. Complete with 3 1/2" waste and overflow pack.

<b>F0309NTP</b>	207.0613.408	Reno 90 - 860 x 500mm
<b>F0305NTP</b>	207.0613.406	Reno 100 - 1000 x 500mm



### RENO 1 1/2" BOWL TAP AND SINK PACK

Reversible inset 1 1/2 bowl sink with F1059N mono mixer tap. Complete with 3 1/2" waste and overflow pack.

<b>F0306NTP</b>	207.0613.407	Reno 150 - 1000 x 500mm
-----------------	--------------	-------------------------



### F5L-MIX SINGLE-LEVER WALL MOUNTED MIXER

F5L-Mix single-lever mixer DN 15 for surface mounted shower facilities. Ceramic disc mixing cartridge and thermostatic protection from scalding, set to 43 °C. Aquajet comfort shower head & pipe for a full solution.

<b>F5LM2001</b>	210.0056.864	F5L shower lever mixer
<b>SHAC0008</b>	210.0577.605	Comfort shower head
<b>ACXX2003</b>	210.0631.767	Shower pipe



### QUADRO SOLID SURFACE WASHBASIN

Single Miranit washbasin with tap hole. Add an F5 tap for a full solution. Dimensions: 600 x 125 x 530 mm (W x H x D).

<b>ANMW411</b>	203.0000.149	Single washbasin
<b>F5LM1001</b>	208.0563.550	F5 pillar lever tap

### HIGHER EDUCATION SOLUTIONS

Franke have a range of products for higher education accommodation, with standard and bespoke products for kitchen areas and bathrooms.



304 stainless steel



Composite material



Easy to install



Bespoke designs

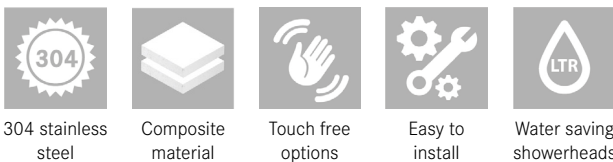


# TECHNICAL COLLEGES & TRAINING ACADEMIES

## Showers for specialist facilities

### Products for colleges and training education facilities

Other establishments such as colleges and special training facilities are also important to consider when designing or specifying a project. These could include athletic facilities, Olympic training camps, football academies and more. One of the most important products within this type of environment are showers. Users must have somewhere to shower before and after training whether it be track and field, sports or swimming. These products have been designed to be robust and able to withstand high footfall and continuous use, whilst offering high energy efficiency and sustainability credentials.



#### F5S MIX MIRANIT SHOWER PANEL

Miranit shower panel for wall mounting with DN 15 self-closing single control mixer and connecting nozzles for the shower head. Shower head sold separately (see page 19).

**F5SM2026** 210.0629.599



#### F5S MIX STAINLESS STEEL SHOWER PANEL

Stainless steel shower panel for wall mounting with DN 15 self-closing single control mixer and connecting nozzles for the shower head. Shower head sold separately (see page 19).

**F5SM2020** 210.0629.600



#### F5E THERM STAINLESS STEEL SHOWER PANEL

Stainless steel shower panel for wall mounting with thermostatic mixer and connecting nozzles for the shower head. Shower head sold separately (see page 19).

**F5ET2020** 210.0629.651



#### CEILING HEIGHT SHOWER TOWER WITH TACTILE SWITCH

Ceiling height shower tower with high security shower head and tactile switch. With concealed pipework, ligature resistant design and in-built TMV3.

**SH01-005** 210.0611.633



#### Aquajet slimline

Shower head with plastic jet face with anti-limescale system and low aerosol formation.

**SHAS0011**



#### Aquajet comfort

Adjustable shower head (13–23°) anti-limescale & low aerosol formation.

**SHAC0011**

**F5LM2026**  
**SHAC0011**



# COMPLETE THE WASHROOM

## Touch-free water saving taps

### Touch-free taps

The touch-free range of taps provides ultimate flexibility for education environments, with three different ranges; F5E, Aquarius wall mounted straight spouts and the Classic range. The range of taps are all electronically controlled and provide a hygienic touch-free hand washing solution even in the busiest of environments, such as, secondary schools and universities. These WRAS approved taps come in a range of finishes, from satin and high polish grade 316 stainless steel to high polished chrome plated brass. The range is fully programmable with additional functions such as hygiene purge, lockouts and anti-vandal features. DVS and Franke hand held programmable remotes are sold separately.



Touch free operation



Chrome & stainless options



Hygienic material



Easy to clean



Fully Programmable



#### AQUARIUS 45° SPOUT

Touch-free spout with a satin finish and PEX hoses. Nominal 5 litre per minute flow rate.\*

<b>AT03-011</b>	208.0000.080	140mm project.
-----------------	--------------	----------------



#### AQUARIUS STRAIGHT SPOUT

Touch-free spout with a satin finish and PEX hoses. Nominal 5 litre per minute flow rate.\*

<b>AT02-001</b>	208.0000.077	150mm project.
<b>AT02-011</b>	208.0606.402	200mm project.



#### F5E-MIX ELECTRONIC PILLAR MIXERS

For connecting to hot and cold water via connecting hoses, with an integrated backflow preventer. Nominal 5 litres per minute flow rate.

<b>F5EM1001</b>	208.0563.548	battery
<b>F5EM1003</b>	208.0563.549	mains



#### CLASSIC SWAN TAP

Touch-free Classic Swan taps with PEX hoses and nominal 5 litre per minute flow rate. Manufactured from chrome plated brass.\*

<b>AT01-011</b>	208.0617.515	145mm project.
<b>AT01-001</b>	208.0481.307	145mm project.



AT03-011



#### Mains and battery kits

\*Mains or battery kits are required for Aquarius and Classic touch-free taps.

<b>AT00-001</b>	214.0544.450	Single station battery kit (1-6 bar brass valve)
<b>AT00-002</b>	230.0488.320	Single station mains kit (1-6 bar brass valve)
<b>AT00-003</b>	230.0000.061	Two station mains kit (1-6 bar brass valve)
<b>AT00-004</b>	230.0000.062	Three station mains kit (1-6 bar brass valve)



# COMPLETE THE WASHROOM

## Water saving taps

### F3 and F5 range of taps

In highly frequented washrooms in various education establishment, it is important to choose taps which reduce the impact of water wastage and vandalism whilst ensuring efficient hygiene.

The F5 range of taps excel in functionality and style and come in three ranges; electronic, self-closing and lever taps. All Franke F5S self-closing taps have been designed with the patented Franke Modular Innovation Cartridge (FRAMIC). The cartridge ensures stagnation-free, hydraulic control of the water flow and sets the highest hygiene standards.

The F3 range has been designed with a classic look in mind. The traditional and elegant design of the F3 self-closing mixer taps are ideal for primary and secondary education washroom environments.



\*F5S taps only



#### F5S SELF-CLOSING PILLAR MIXER\*

F5S-Mix self-closing pillar mixer with adjustable, turn-proof temperature stop. Designed with the FRAMIC self-closing cartridge. Nominal 5 litres per minute flow rate.

**F5SM1001** 208.0563.593



#### F5S SELF-CLOSING PILLAR TAP\*

F5S self-closing pillar tap (pre-mixed) with adjustable flow duration. Designed with the FRAMIC self-closing cartridge. Nominal 5 litres per minute flow rate.

**F5SV1001** 208.0563.594



#### F5L-MIX PILLAR LEVER TAP

Designed with a mixing cartridge with ceramic disc technology and thermostatic protection from scalding. Nominal 5 litres per minute flow rate.

**F5LM1001** 208.0563.591 100mm project.

**F5LM1002** 208.0563.592 125mm project.

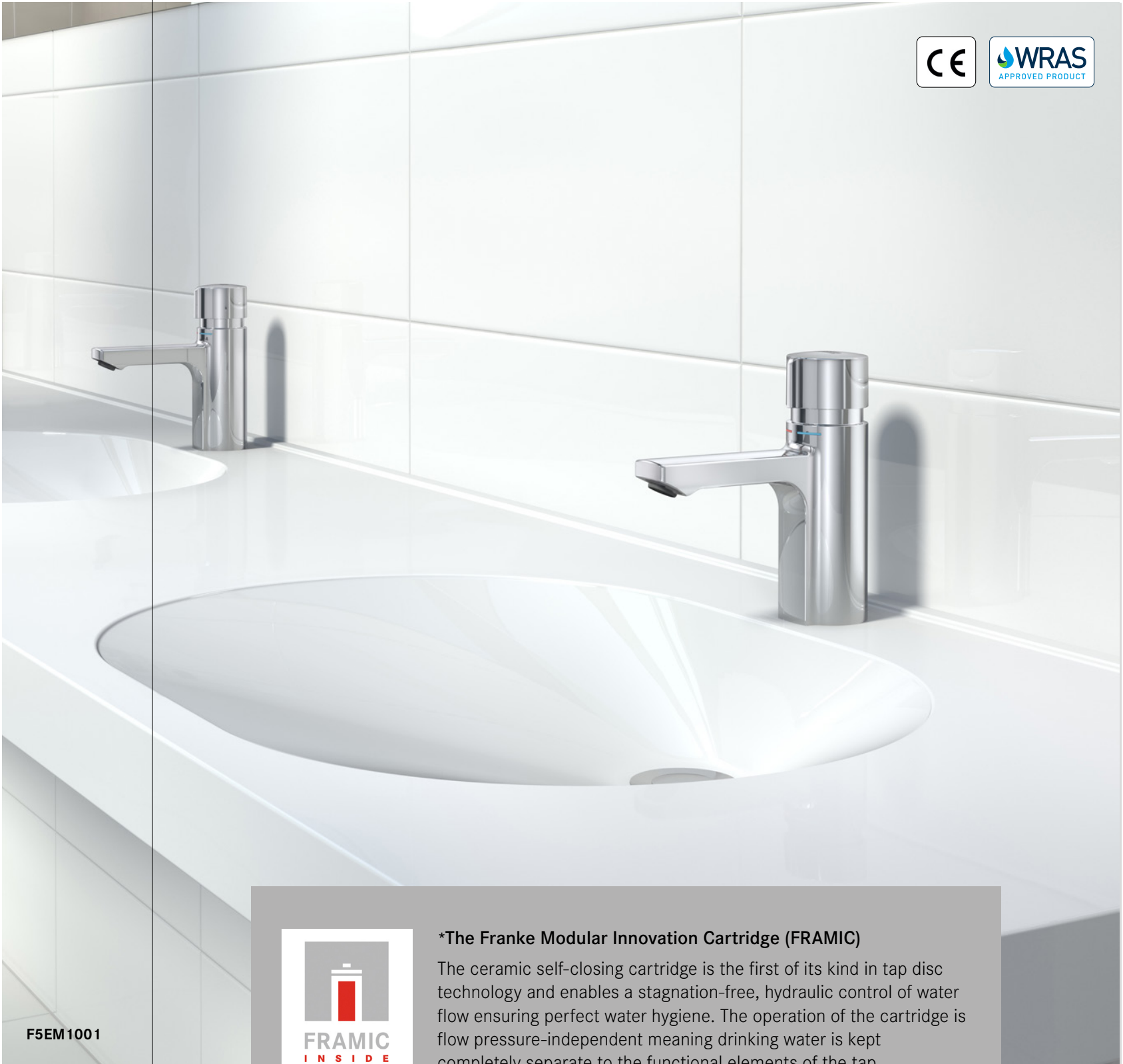


#### F3S SELF-CLOSING PILLAR TAPS

Hydraulically controlled self-closing function which prevents water from flowing back through the system. Nominal 3 litres per minute flow rate.

**F3SM1001** 208.0563.601 mixer tap

**F3SV1001** 208.0519.518 pre-mixed



#### \*The Franke Modular Innovation Cartridge (FRAMIC)

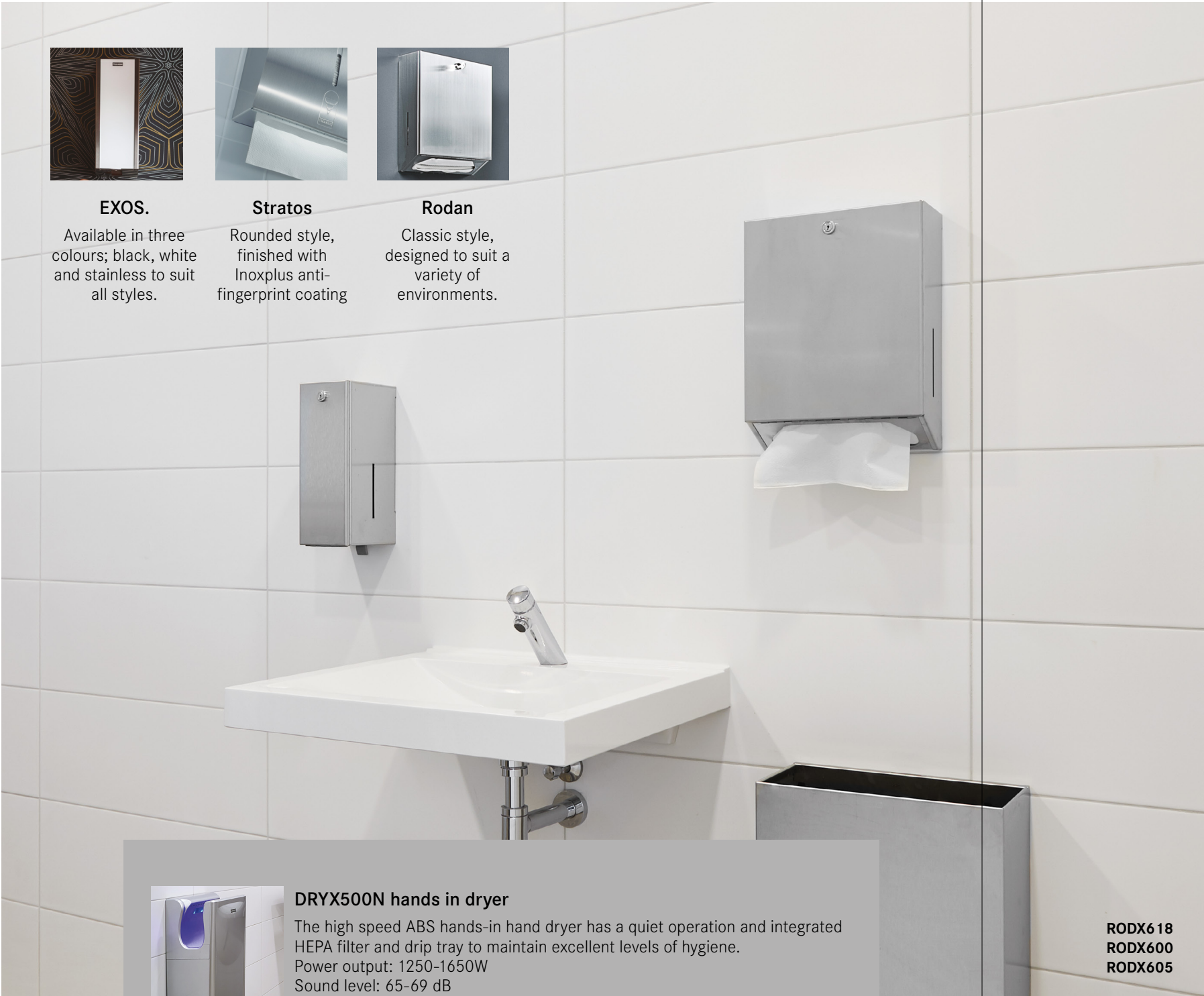
The ceramic self-closing cartridge is the first of its kind in tap disc technology and enables a stagnation-free, hydraulic control of water flow ensuring perfect water hygiene. The operation of the cartridge is flow pressure-independent meaning drinking water is kept completely separate to the functional elements of the tap.

F5EM1001



# ACCESSORISE

Three different ranges to suit all styles and specifications



**EXOS.**  
Available in three colours; black, white and stainless to suit all styles.



**Stratos**  
Rounded style, finished with Inoxplus anti-fingerprint coating



**Rodan**  
Classic style, designed to suit a variety of environments.



**DRYX500N hands in dryer**  
The high speed ABS hands-in hand dryer has a quiet operation and integrated HEPA filter and drip tray to maintain excellent levels of hygiene.  
Power output: 1250-1650W  
Sound level: 65-69 dB  
**DRYX500N** 201.0552.888

**RODX618**  
**RODX600**  
**RODX605**

## High quality stainless steel accessories

Breaking away from mismatching sanitaryware and accessories can separate your washroom from the rest. Adding coordinating ranges of accessories such as matching soap dispensers, hand dryers and waste bins can bring the room to life and add value to the whole washroom.



### JUMBO TOILET ROLL HOLDER

<b>EXOS670X</b>	201.0479.701
<b>STRX670</b>	201.0000.060
<b>CHRX670</b>	201.0000.059



### DOUBLE TOILET ROLL HOLDER

<b>EXOS676X</b>	201.0479.684
<b>EXOS676B</b>	201.0479.685
<b>EXOS676W</b>	201.0479.687
<b>STRX672</b>	201.0515.181
<b>RODX672</b>	201.0000.056



### LIQUID SOAP DISPENSER

<b>EXOS618X</b>	201.0000.041
<b>EXOS618B</b>	201.0000.039
<b>EXOS618W</b>	201.0000.040
<b>STRX619</b>	201.0000.024
<b>RODX619</b>	201.0000.017



### HAND TOWEL DISPENSER

<b>EXOS637X</b>	201.0000.047
<b>EXOS637B</b>	201.0000.045
<b>EXOS637W</b>	201.0000.046
<b>STRX600</b>	201.0515.168
<b>RODX600</b>	201.0000.000



### HAND DRYER

<b>EXOS220X</b>	201.0479.675
<b>EXOS220B</b>	201.0479.676
<b>EXOS220W</b>	201.0479.677
<b>STRX220</b>	201.0473.301
<b>RODX310</b>	201.0000.132



### WASTE BIN

<b>EXOS605X</b>	201.0000.035
<b>EXOS605B</b>	201.0000.033
<b>EXOS605W</b>	201.0000.034
<b>STRX607</b>	201.0000.078
<b>RODX607</b>	201.0000.089



# SOAP AND SANITISER DISPENSERS

Robust and elegant washroom accessories



**Stainless steel touch-free sanitiser dispenser**

Suitable for sanitiser with 800ml refill tank.

**RODX627H** 201.0615.053



**Wall mounted touch free soap and sanitiser dispenser**

Minimalistic easy to clean design. Mains PSU or battery operated.

**SD01-005** 201.0557.733

**SD01-003**



**DECK MOUNTED TOUCH-FREE SOAP AND SANITISER DISPENSER**

Touch-free operation with clean design. 2 litre soap tank. Comes complete with mains and battery kit.

**SD01-003** 201.0624.810

Recommended

**AC00-008** 201.0631.912 Alcohol-free gel refill (5L)



**DECK MOUNTED PUSH BUTTON SOAP DISPENSER\***

With a robust push button top and long spout with 140mm projection. 1 litre liquid soap tank

**SD80** 201.0000.022

Recommended

**SO10L** 220.0000.000 Liquid soap (10L)

**DECK MOUNTED SOAP DISPENSERS**

Manufactured from chromated brass the range features both touch-free and push-button operation. The longer spout reaches easily over the bowl providing cleaner operation and reduces the risk of soap sitting on the surfaces.

The SD80 has a 1 litre soap tank with membrane for pressure balance, which is filled from above, and the SD01-003 comes with a larger 2 litre tank for soap or sanitiser.

Chrome material

Liquid soap and lotions

Push function\*

Touch free operation

Easy to clean

\*SD80 only

# SOAP AND SANITISER DISPENSERS

Robust, elegant and touch-free washroom accessories



<b>SO10L</b>	220.0000.000	Replacement liquid soap (10L)
<b>AC00-052</b>	201.0624.809	Replacement hand sanitiser 70% alcohol
<b>EACCS055</b>	230.0601.308	Sanitiser conversion kit for Exos. & Rodan soap dispensers
<b>EACCS057</b>	230.0598.604	Sanitiser conversion kit for Stratos soap dispenser



## VANDAL RESISTANT TOUCH-FREE SOAP AND SANITISER DISPENSER

Stainless steel touch-free dispenser suitable for sanitiser, liquid soaps and lotions. 800ml refill tank.

**AC00-030** 201.0615.051



## EXOS. TOUCH-FREE SANITISER/SOAP DISPENSERS

Stainless steel touch-free dispensers. 800ml refill tank.

<b>EXOS627X</b>	201.0631.106	Sanitiser dispenser-steel front
<b>EXOS625X</b>	201.0000.044	Soap dispenser - steel front
<b>EXOS625B</b>	201.0000.042	Soap dispenser - black front
<b>EXOS625W</b>	201.0000.043	Soap dispenser - white front
<b>EACCS055</b>	230.0601.308	Sanitiser conversion kit



## STRATOS TOUCH-FREE SANITISER/SOAP DISPENSERS

Stainless steel touch-free dispenser suitable for liquid soaps and lotions. 800ml refill tank.

<b>STRX627</b>	201.0631.105	Sanitiser dispenser
<b>STRX625</b>	201.0000.042	Soap dispenser
<b>EACCS057</b>	230.0598.604	Sanitiser conversion kit



## RODAN TOUCH-FREE SANITISER/SOAP DISPENSERS

Stainless steel touch-free dispensers. 800ml refill tank.

<b>RODX627H</b>	201.0615.053	Sanitiser dispenser
<b>RODX625H</b>	201.0622.783	Soap dispenser
<b>EACCS055</b>	230.0601.308	Sanitiser conversion kit

## WALL MOUNTED SOAP AND SANITISER DISPENSERS

Manufactured from high quality stainless steel, this durable range of touch-free soap and sanitiser dispensers release a predefined amount of soap when triggered. The four different styles enable a perfect fit for any environment.



Touch free operation



304 stainless steel



Hygienic material



Easy to clean

RODX625H  
RODX600



# SOAP AND SANITISER DISPENSERS

## Robust, elegant and touch-free washroom accessories

### Liquid soap and hand sanitiser dispensers

Manufactured from high quality durable stainless steel, these free-standing units are ideal in a variety of education environments, from primary schools, right through to universities, whether it be in the atrium or outside lecture theatres. Each unit can be easily refilled, either through the key lock fronts or access panel and the free-standing design and battery-powered options adds ultimate flexibility when positioning.



Touch free operation



Liquid soap & sanitiser



Hygienic material



Easy to clean




304 stainless steel



**DVS TOUCH-FREE HAND SANITISER DISPENSER WITH STAND**

High quality stand with a small footprint which includes a DVS branded bib sanitiser dispenser and concealed 1.6 -2 litre refillable bottle.\* Please note the DVS branded dispenser is only suitable for alcohol-free sanitiser.


<b>AC00-050</b>	201.0624.808	
<b>AC00-008</b>	201.0631.912	Alcohol-free 5 litre gel refill



**TOUCH-FREE SANITISER/SOAP DISPENSER WITH SLIMLINE STAND**

Slimline stand with a small footprint and anti-spill tray. All touch-free dispensers have inspection window and key lock.\*

<b>RODX627H-STD37</b>	201.0624.739	Rodan sanitiser
<b>RODX625H-STD37</b>	201.0624.735	Rodan soap dispenser
<b>STRX627-STD37</b>	201.0631.094	Stratos sanitiser dispenser
<b>STRX625-STD37</b>	201.0624.801	Stratos soap dispenser
<b>EXOS625X-STD37</b>	201.0624.803	Exos. soap dispenser
<b>EXOS627X-STD37</b>	201.0631.096	Exos. sanitiser



**TOUCH-FREE SOAP/HAND SANITISER DISPENSERS WITH PREMIUM STAND**

Premium stand with a small footprint and anti-spill tray. All touch-free dispensers have inspection window and key lock.\*

<b>RODX627H-STD36</b>	201.0624.740	Rodan sanitiser
<b>RODX625H-STD36</b>	201.0624.737	Rodan soap dispenser
<b>STRX627-STD36</b>	201.0631.097	Stratos sanitiser dispenser
<b>STRX625X-STD36</b>	201.0624.802	Stratos soap dispenser
<b>EXOS625X-STD36</b>	201.0624.804	Exos. soap dispenser
<b>EXOS627X-STD36</b>	201.0631.098	Exos. sanitiser

\*Junior heights and manual dispensers are also available.





Completely touch-free hand washing places for optimum hand hygiene



**Touch-free sanitiser dispenser station**

Touch-free sanitiser dispenser station with built in sensors, manufactured from quality stainless steel. A clean shot of liquidsoap is dispensed automatically without any need to touch the unit, reducing cross contamination and substantially improving hygiene in the washroom.

<b>AC00-053</b>	201.0657.799
-----------------	--------------



# SANITARYWARE

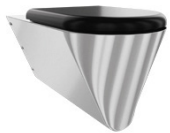
Touch-free WCs, flushvalves and cistern kits



**Flush valve kit complete with sensor**  
Complete with wave on sensor and 1 1/2” base flush valve, control box and 3 metre cable. Other kits are available with tactile or programmable operations and alternative base size. See [www.dartvalley.co.uk](http://www.dartvalley.co.uk) for more information.  
**WC03-002** 209.0583.506



**CAMPUS FLOOR STANDING PUSH FIT WC PAN**  
Manufactured from grade 304 steel. Flushing certified to EN 997, concealed flushing rim with min. 4 litre flushing capacity.  
**CMPX597B** 205.0000.012 Black seat and lid  
**CMPX597G** 205.0000.013 Grey seat and lid  
**CMPX597W** 205.0000.015 White seat and lid

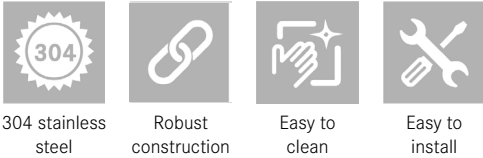


**CAMPUS WALL MOUNTED PUSH FIT WC PAN**  
Manufactured from grade 304 steel. Flushing certified to EN 997, concealed flushing rim with min. 4 litre flushing capacity.  
**CMPX592B** 205.0000.002 Black seat and lid  
**CMPX592G** 205.0000.003 Grey seat and lid  
**CMPX592W** 205.0000.005 White seat and lid



**CONCEALED PLASTIC CISTERN KIT**  
Kit includes; WRAS approved side entry valve, 2” to 1½” flush pipe, back to pan connector, and concealed vertical cistern (flush valve sold separately).  
**WC02-014** 209.0610.923

**SANITARYWARE**  
Modern secondary education washrooms need to be functional, stylish and long lasting. Franke have designed a range of products to suit any education project, whether it be a simple renovation or complete washroom revamp.  
Franke’s stainless steel WCs are a perfect choice for secondary or further education washrooms as they are robust and manufactured from grade 304 stainless steel material. Add Dart Valley branded flush valves and cisterns for a complete water saving solution.





# STAINLESS STEEL URINALS

Save water with standard and waterless urinals



**Urinal control system**  
Two station urinal control kit, complete with mains control box, two solenoid valves & two sensors, for direct flushing.  
**UC07-011** 205.0611.714



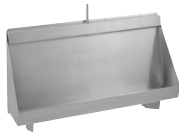
**Urinal flush controls**  
Flushmatic surface mount kit in White – battery complete with solenoid valve, for cistern fed flushing.  
**UC01-005** 205.0611.714



**URINAL POD**  
Stainless steel waterless urinal pod, easy to maintain with unique key system.  
**CMPX538WFP** 208.0606.551 push fit, water-free  
**CMPX538P** 205.0000.044 push fit, electronic  
**CMPX538CD** 205.0000.057 push fit, duct mounted  
**HDTX538P** 205.0000.052 bolt fix, electronic



**WATERLESS URINAL SLAB**  
Stainless steel waterless urinal slabs, easy to maintain with unique key system, available with left and right hand wastes.  
**G20125L** 205.0560.088 1200mm left hand  
**G20125R** 205.0000.066 1200mm right hand  
**G20126L** 205.0553.762 1800mm left hand  
**G20126R** 205.0553.763 1800mm right hand



**CENTINEL SLAB URINAL**  
Stainless steel urinal with concealed sparge pipe. Bespoke lengths and exposed sparge pipe options are also available.  
**CEN120C** 205.0651.539 1200 x 300 x 555mm (9l)  
**CEN150C** 205.0651.635 1500 x 300 x 555mm (9l)  
**CEN180C** 205.0651.540 1800 x 300 x 555mm (13.5l)  
**CEN240C** 205.0651.631 2400 x 300 x 555mm (13.5l)

**STAINLESS STEEL URINALS**  
Over half of 'domestic' water used in commercial premises can be due to urinals operating without flush controls. Adding the correct flush controls such as DVS Flushmatic, or installing waterless products can vastly reduce water bills with minimal initial outlay.  
All Franke branded urinals are manufactured from robust 1.2mm thick grade 1.4301 (304) stainless steel with a satin finish. The urinals have been specifically designed for easy installation and maintenance.

Water saving

Efficient design

304 stainless steel

Easy maintenance

Robust material





# REDUCING PLASTIC WASTE

## Stainless steel drinking fountains

### Refill not landfill and make our planet wonderful

The drinking fountain range from Franke Water Systems provide an option suitable for a variety of applications; wall mounted or floor standing, with or without bottle filler and chilled options too. In the last 15 years, consumption of bottled water has doubled, having drinking fountains readily available will encourage students and staff to fill up re-usable bottles rather than purchasing more plastic.



#### STAINLESS STEEL WALL MOUNTED CENTINEL DRINKING FOUNTAIN

Manufactured from 1.2mm thick grade 304 stainless steel. Supplied complete with 19mm waste.

<b>G20100N</b>	213.0000.011	Bubbler only
<b>G20109N</b>	213.0000.013	Bubbler & bottle filler



#### STAINLESS STEEL DRINKING FOUNTAIN WITH PEDESTAL

Manufactured from 1.2mm thick grade 304 stainless steel. Designed with a flat pressed rectangular top. Junior height version also available.

<b>ANMX301</b>	213.0000.025	Bubbler only
<b>ANMX307</b>	213.0000.003	Bubbler & bottle filler



#### STAINLESS STEEL WALL MOUNTED DRINKING FOUNTAIN

Manufactured from 1.2mm thick grade 304 stainless steel. Designed with a flat pressed rectangular top with rounded edges.

<b>ANMX300</b>	213.0000.024	Bubbler only
<b>ANMX306</b>	213.0000.002	Bubbler & bottle filler



#### FLOOR STANDING CHILLED DRINKING FOUNTAIN WITH WATER FILTER

The fountain is for connection direct to the water mains to supply an unlimited amount of fresh chilled water.

<b>ANMX308</b>	213.0000.004	Bubbler only
<b>ANMX309</b>	213.0000.005	Bubbler & bottle filler



**BREEAM fixing kit**  
Breeam fixing kit for floor standing chilled drinking fountains. The fixing kit allows the drinking fountain to be placed against the wall and floor, concealing any pipework or wires, adhering to BREEAM criteria. Dimensions: 354 x 924 x 100 mm (W x H x D)

<b>ANMX315</b>	213.0000.000
----------------	--------------



# CLEANING SOLUTIONS

## Janitorial, cleaning and general purpose sinks



**Crosshead bib taps**  
Complete the bucket sink with bib taps. Conforms to BS5412 standard.  
**F1071/3N** 208.0574.188



**Monobloc mixer**  
Add a mixer tap to canteen or staff room sinks. Conforms to BS5412 standard.  
**F1059N** 208.0574.216

G21663N



### FLOOR STANDING STAINLESS STEEL JANITORIAL UNIT

Manufactured from grade 1.4301 (304) stainless steel (lower bowl 0.9mm thick) complete with monobloc mixer.

**G20050N** 207.0000.058



### FLOOR STANDING STAINLESS STEEL BUCKET SINK

Manufactured from grade 1.4301 (304) stainless steel, material thickness 1.2mm, with splash back, hinged grating, 38mm BSP waste fitting.

**G21663N** 207.0000.060



### REVERSIBLE SINKS

Manufactured from grade 304 stainless steel these multi-purpose sinks are ideal for canteens or staff room sinks.

**F0306NP** 203.0529.988 Single bowl sink

**F0309NP** 203.0529.985 Bowl 1/2 sink

### MAINTENANCE

Franke's cleaning and janitorial range includes general kitchen sinks, bucket and cleaners sinks, janitorial units and a variety of utility sinks. All manufactured from grade 304 stainless steel these products guarantee the best quality. The range of medical and hand washing sinks are ideal for student healthcare facilities.

Franke also have a variety of products for science classrooms including grade 316 stainless steel sinks. Grade 316 stainless steel is highly resistant to corrosion and most acids and therefore is the ideal solution for this environment (view the range online).



316 lab sinks



Easy to clean



Low maintenance



Compliant products



# THE CANTEEN

## Stainless steel sinks

### Catering and hand washing

Franke Water Systems has a range of solutions for canteens and catering facilities. The range includes catering sinks, preparation tables and a variety of wall shelves. Manufactured from grade 304 stainless steel, this material is highly durable, resistant to corrosion and long lasting. Stainless steel is the perfect material for any catering environment from university accommodation kitchens to high secondary school canteens. A range of optional supports, stands and shelves (sold separately) and complementary parts including taps and waste kits provide a full solution.



304 stainless steel



Robust construction



Easy to clean



Easy installation



### SINGLE BOWL SINGLE DRAINER MINI CATERING SINK

Manufactured from 1.2mm thick austenitic grade stainless steel polished to a satin finish. Dimensions: 1000 x 900 x 600mm (W x H x D)\*

<b>E20601L</b>	214.0000.000	Left hand drainer
<b>E20601R</b>	214.0000.000	Right hand drainer



### SINGLE BOWL MIDI CATERING SINK

Manufactured from 1.2mm thick austenitic grade stainless steel polished to a satin finish. Dimensions: 750 x 900 x 650mm (W x H x D)\*

<b>E20608N</b>	214.0493.164
----------------	--------------



### MINI WALL TABLES

Mini wall tables are manufactured from 1.2 thick austenitic grade stainless steel polished to a satin finish.\*

<b>F20601Z</b>	208.0606.375	1200 x 900mm
<b>F20600Z</b>	208.0606.376	900 x 600mm



### WALL SHELVES

Manufactured from 1.2mm thick grade 1.4016 (430) stainless steel polished to a satin finish.

<b>F10512N</b>	214.0000.168	900 x 300mm
<b>F10515N</b>	214.0000.171	1800 x 300mm

Additional variants and sizes are available, please get in touch to request more information.

\*Stand pack sold separately.





# ACCESSIBLE FOR EVERYBODY

## Doc M sanitaryware

### Doc M sanitaryware support packs

In order to comply with building regulations, at least one accessible toilet must be available. Franke has designed a number of products with various considerations in mind including aesthetics, durability and the user’s specific needs. The range is suitable for many education establishments and includes stainless steel and epoxy coated coloured grab rails to make the washroom experience as easy as possible for whoever the user may be.

The Contina grab rails made of non-slip stainless steel, will allow you to grip the rail even if wet. The Doc M compliant range includes various support rail packs and full Doc M sanitary and support rail packs. A bespoke range of grab rails is available to create a unique washroom style or to suit specific needs, any colour and length is possible.

### WC packs include:


- 4 x stainless steel grab rails 600mm
- 1 x Stainless steel drop down rail 760mm (blue), 850mm (stainless)
- Stainless steel back rests and cushion 24mm (blue), 150mm (stainless)

Accessories, taps and basins sold separately


### Features

- Slip resistant high quality stainless steel
- Accessible tap with ergonomic lever
- Raised height WC
- Comfortable PU foam back rest cushion
- Matching stainless steel accessories available as extras


<b>CNTX106S</b>	202.0574.570	Contina stainless steel WC pack
<b>GRBX206BNP</b>	202.0572.501	Grabex blue coated steel WC pack
<b>ANMX150L</b>	203.0611.023	Stainless steel hand rinse basin, left hand tap hole
<b>ANMX150R</b>	203.0611.022	Stainless steel hand rinse basin, right hand tap hole
<b>F5LM1010</b>	208.0511.861	F5 single-lever pillar mixer tap




304 stainless steel



Doc M compliant



LABC and LBSS approved layouts



High quality materials



breeam



Make  
it  
Wonderful

#### NORTHERN OFFICE

Franke Water Systems  
14 Napier Court  
Gander Lane  
Barlborough  
S43 4PZ  
Phone +44 (0)1246 458900  
[ws-info.uk@franke.com](mailto:ws-info.uk@franke.com)  
[www.franke.co.uk](http://www.franke.co.uk)

#### SOUTHERN OFFICE

Dart Valley Systems  
Kemings Close  
Long Road  
Paignton, Devon  
TQ4 7TW  
Phone +44 (0) 1803 529021  
[sales@dartvalley.co.uk](mailto:sales@dartvalley.co.uk)  
[www.dartvalley.co.uk](http://www.dartvalley.co.uk)

