

CAMBRINO BABY CHANGING TABLES



The new range of Cambrino baby changing tables is suitable for all public and semi-public premises including restaurants, hotels, airports, office buildings, public spaces and many more. The wall mounted units have been beautifully designed and manufactured from bacterial resistant polypropylene with an option for a stainless steel front cover to suit all modern washroom designs. The range includes horizontal and vertical changing tables, and the option to choose with or without a stainless steel front cover. These fully compliant baby changing tables can enhance any washroom and provide a hygienic, practical and safe solution.

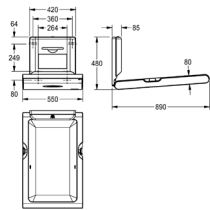
Features

- Designed for wall mounting (Vertical and horizontal options available)
- Manufactured from polypropylene with antibacterial Biocote® protection
- Available versions with or without stainless steel front cover
- Hinged design with shock absorber for safe opening and closing
- Nylon safety strap and hooks on both sides
- Lockable dispenser for single-use paper covers (max. width 260 mm)
- Certified in accordance with EN 12221-1 and EN 12221-2
- Supplied with mounting materials
- Supplied with 80 single-use paper covers

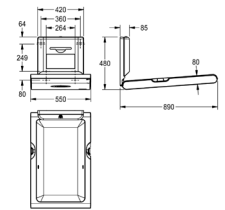
Perfect for a variety of environments



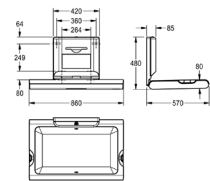
Holiday parks Airports Supermarkets Leisure Restaurants Hotels



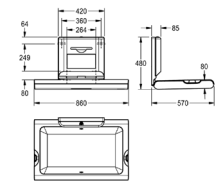
Product name	CAMB22VS - 204.0580.890
Material	Polypropylene with antibacterial Biocote® with stainless steel front
Dimensions (closed)	550 × 890 × 100 mm
Dimensions (open)	550 × 480 × 890 mm



Product	CAMB20VP - 204.0580.889
Material	Polypropylene with antibacterial Biocote®
Dimensions (closed)	550 × 890 × 100 mm
Dimensions (open)	550 × 480 × 890 mm



Product name	CAMB11HS - 204.0580.888
Material	Polypropylene with antibacterial Biocote® with stainless steel front
Dimensions (closed)	860 × 565 × 100 mm
Dimensions (open)	860 × 480 × 570 mm



Product name	CAMB10HP - 204.0597.789
Material	Polypropylene with antibacterial Biocote®
Dimensions (closed)	860 × 565 × 100 mm
Dimensions (open)	860 × 480 × 570 mm