

F3SV2003

Self-closing straight way valve

F3S self-closing straight-way valve DN 15 for in-wall mounting with noise-reducing styrene cladding, for shower facilities. Self-closing functional part, hydraulically controlled, piston-free design, self-closing, stepless adjustment of flow duration. For connection to pre-mixed hot water or cold water. Casing including changeable valve seat, with internal thread G 1/2, visible parts high-polished, chromium-plated brass. With rosette, depth adjustability 15 mm.

Technical data

Additional connections	No
With backflow preventer	No
Built-in fitting model	Build-in + finishing section
Calculation flow rate cold water	0.15 l/s
Circulation	No
Connection with pay water dispenser	Not possible
With filter	No
Adjustable flow time	Yes
Functional principle	Hydraulic self-closing
For hand shower	No
Hygiene flushing	No
Diameter nominal	DN 15
Inlet size	G 1/2
Locking mechanism	Top section, non-ceramic
Material fitting	Brass
Maximum flow time	35 seconds
Minimum flow pressure	1 bar
Minimum flow time	5 seconds
Type of mixing	No
With rosettes / cover plate	Yes
Protective shutdown	No
Shower pipe draining	No
Sound insulation	No
Surface finish fitting	Chromium-plated brass
Surface treatment fitting	Polished
Temperature limit	No
Thermal disinfection	No
Type of mounting	In-wall installation without box

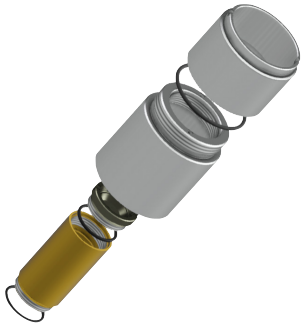
KWC

Self-closing straight way valve

Technical data

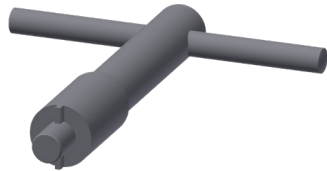
Type of operation	Manual operation
Type of shower	In-wall fitting
Volume flow rate at 3 bar	0.2 l/s
Water connection	Threaded connection (internal)
Position of water connection	From bottom
Accent colour	None
Basic colour	Chrome-look (glossy)

Optional accessories



Optional accessories

AQRM900
Extension kit



Optional accessories

AQRM967
Valve seat key

Spare accessories



Spare accessories

ESHOW0001
Functional element



Spare accessories

ZFITG0003
Hexagonal socket wrench