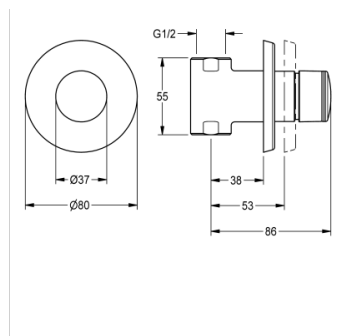


# SELF-CLOSING STRAIGHT WAY VALVE

F3SV2003 | 2030034416

PRODUCT GROUP (PG) : **Showers** | ARTICLE FAMILY (AF) : **Self closing shower** | ARTICLE GROUP (AG) : **F3SV2003 ++** |  
 MODEL RANGE : **F3** | LIFECYCLE : **New**



F3S self-closing straight-way valve DN 15 for in-wall mounting with noise-reducing styrene cladding, for shower facilities. Self-closing functional part, hydraulically controlled, piston-free design, self-closing, stepless adjustment of flow duration. For connection to pre-mixed hot water or cold water. Casing including changeable valve seat, with internal thread G 1/2, visible parts high-polished, chromium-plated brass. With rosette, depth adjustability 15 mm.

## TECHNICAL DATA

Gross Weight	0.65 kg
Net Weight	0.60 kg
Functional Principle	HYDRALIC-C
Type Of Mixing	NO
Type Of Shower	IN-WALL-FITTING
Additional Connections	NO
Calculation Flow Rate Cold Water	0.15 liter per seconds
Circulation	NO
Connection With Pay Water Dispenser	NOT-POSSIBLE
Adjustable Flow Time	YES
Diameter Nominal	DN-15-1-2INH
Material Fitting	BRASS
Maximum Flow Time	35 s
Minimum Flow Pressure	1.00 bar
Minimum Flow Time	5 s
Protective Shutdown	NO
Shower Pipe Draining	NO
Sound Insulation	NO
Surface Finish Fitting	CHROMISED
Thermal Disinfection	NO
Type Of Mounting	IN-WALL-INSTALLATION-WO-BOX
Type Of Operation	MANUAL-OPERATION
Volume Flow Rate At 3 Bar	0.20 liter per seconds
Position Of Water Connection	BOTTOM

# SELF-CLOSING STRAIGHT WAY VALVE

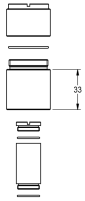
F3SV2003 | 2030034416

PRODUCT GROUP (PG) : **Showers** | ARTICLE FAMILY (AF) : **Self closing shower** | ARTICLE GROUP (AG) : **F3SV2003 ++** |  
MODEL RANGE : **F3** | LIFECYCLE : **New**

---

## ACCESSORIES

---



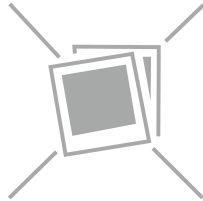
---

**EXTENSION SET**

---

2000101451

---



---

**VALVE SEAT SPANNER**

---

2000101454

---

---

## SPARE PARTS

---



---

**FUNCTIONAL PART**

---

2000104352

---