

TAPS & SHOWERS

Taps & showers for all markets

Specialising in water saving technology for commercial washrooms, Dart Valley Systems have been producing leading automatic washroom technology for over 30 years.

DVS are a market leader in the field of automatic washroom solutions for specialist applications, including the healthcare, mental healthcare, custodial and public sector markets. DVS products have been used reliably in some of the most demanding environments for many years.

HYGIENIC, ECONOMICAL, RELIABLE...

INTRODUCTION

Dart Valley Systems are market leaders in the field of automatic washroom products for various applications, including; healthcare, leisure, retail, airports, motorway services, education, office, food factories and more.

DVS have achieved extremely high levels of reliability and value for money across their tap and shower range, as a result of extensive development and testing.

Selection of the correct products has been shown to increase washing compliance, reduce cross contamination and make considerable savings on water costs.

The DVS no-touch taps range is well suited and are used successfully in food prep areas and food factories, thanks to the hygienic no-touch operation as well as smooth easy to clean surfaces.

For further details about our full product range, please refer to our website at www.dartvalley.co.uk or contact our sales team on +44(0)1803 529021

SITE REF'S

Below is just some of DVS's recent customers:

University of Bath
City College Plymouth
South Devon College
Truro & Penwith College
Exeter University
University of the West of England
University of St Mark & St John
NHS England, Wales, Scotland & Northern Ireland
British Airways
Heathrow & Gatwick Airports
Kellogg's
Tesco Bank
Jaguar LandRover
China Fleet Country Club
Paignton Zoo



All DVS electronic taps and most sensors are now programmable via the new Handheld Programmer, this allows setup to be very quick and very easy to change.

TAPS & SHOWERS

All have adjustable run times that can be set to wave on and time out or wave on and wave off, built-in purge options all fully adjustable, the sensors can also be turned off via the hand set for cleaning and maintenance.

A chlorination option is also available from the handset making chlorination easy with new installations.

For secure applications lock-outs are also available and fully adjustable to suit each application.

All programmable sensors are bi-directional allowing real-time data to be recorded to the handset and uploaded to a PC via the USB interface.

WE ALSO OFFER INSTALLATIONS & SERVICING...

An experienced team of regionally based City & Guilds certified service and installation engineers allow us to offer our customers the highest standard of installation, alongside comprehensive after sales service, including commissioning.

For more information on our installation and support services or to request a visit from one of our engineers, please contact:

Serviceing

servicing@dartvalley.co.uk
+44 (0)1803 416 147

Tech Support

techsupport@dartvalley.co.uk
+44 (0)1803 416 135





DVS NO-TOUCH TAPS



AQUARIUS™ & CLASSIC TAPS

Combining the benefits of hygiene no-touch technology with great water saving potential and robust reliable performance, no-touch taps are an ideal choice for washrooms across a wide variety of applications, notable sectors include; supermarkets, hospitals, universities, airports and motorway services.

All DVS No-touch taps feature intelligent electronics, enabling a range of adjustable settings, including; sensor detection range.

Easy to install, with options for mains or battery operation, no-touch taps allow the user to control water efficiently, conserve energy and reduce costs without sacrificing performance and reliability.

FEATURES_

- Hygienic no-touch operation
- Adjustable settings include; Run-time, sensor range, anti-vandal, lockout mode, automatic purge and more
- Robust 316 Stainless Steel or Chrome plated Brass
- Easy installation and servicing
- Ergonomic, easy clean surfaces
- Range of finishes and tail options



A32 & A45_

- 316 Stainless Steel (brushed or polished)
- Robust design and build quality
- Suitable for a wide range of applications
- Also available in no-electronic version



WM STRAIGHT_

- 316 Stainless Steel (brushed or polished)
- Available in 3 lengths; 150mm, 200mm and 250mm
- Also available in no-electronic version
- Also available with PALL adaptor and P.O.U filter (below)



DVS NO-TOUCH TAPS OFFER AN AVERAGE 65% WATER SAVING...



HIGH NECK & HIGH NECK SV_

- 316 Stainless Steel (brushed or polished)
- High Neck suitable for raised sinks
- High Neck SV suitable for recessed sinks
- Also available in no-electronic version



CLASSIC & CLASSIC SWAN_

- Chrome plated heavy brass
- Robust design and build quality
- Available with Stainless Steel or copper tails



Stainless Steel is 100% recyclable



PILLAR & PILLAR SV_

- Chrome plated heavy brass
- Standard Pillar is suitable for raised sinks or glass bowls
- Pillar SV is suitable for recessed sinks





FRANKE



FRANKE PROTRONIC TAPS

An extensive range of solutions for washing facilities include; touch-free electronically controlled taps and mixing taps with opto-sensor by FRANKE.

Sanitary products used in publicly accessible WC facilities must be able to withstand severest conditions. The high rate of usage in combination with an ever changing circle of users makes hygiene an issue.

High-quality, sturdy washbasin taps that are touch free, meet these challenges well. A bright and minimal design combined with a long service life and easy to clean surfaces support the clean appearance of these sanitary facilities.

FEATURES_

- Chrome finish
- Minimal easy clean designs
- Touch free sensor operation
- Save water and energy (up to 50% water savings)
- Deck and wall mounted options available
- Suitable for various applications



PROTRONIC-S MIXER



PROTRONIC-T



PROTRONIC-C MIXER

PROTRONIC DM_

- Polished chrome plated brass
- Touch-free opto sensor controlled
- Battery and mains versions available
- Complete with aerator and integrated flow controller
- Rugged 1-part (Protronic-S) and 2-part (Protronic-T & C) all metal housing



The Protronic-C, S & T are also available with a mixer lever with temperature stop.



PROTRONIC WM_

- Polished chrome plated brass
- Touch-free opto sensor controlled
- Adjustable flow and purge times via remote control (ZPRTR0001)
- Thermal disinfection mode
- Includes laminar aerator (6 LPM)
- 160mm or 200mm projections available



DVS PUSH TAPS



DVS PUSH TAPS

A popular product for high traffic washrooms, push taps offer great value for money, robustness, reliability and a short payback period.

DVS offer a range of self-closing, manually operated taps that are ideal for all industrial and public washroom applications. The range includes deck and wall mounted options.

FEATURES_

- Up to 50% savings on water costs
- Chrome plated brass
- Easy self-closing operation
- Adjustable flow rates
- High and low pressure versions available
- Easy installation and servicing
- In-built filter
- Reliable and robust
- Wall and deck mounted options



WM extended push tap



WM push tap



Standard push tap (cold)



Lever operated clinic tap

FEATURES_

- Suitable for food prep areas and healthcare
- Child friendly easy to use lever operation

Water saving projection...

400 personnel on site washing their hands 4 times per day would use 4,800 litres of water per day. Depending on the flow rate and set run time, push taps could halve this to 2,400 litres.

Saving 2,400 litres per day x 260 working days = 624,000 litres of water per annum.

This would also result in a substantial reduction in energy and water costs.



FRANKE

AQUA SERIES TAPS

Fittings for wash basins are becoming ever more sophisticated when it comes to water saving, ease of installation and operation. The use of robust materials, reliable technology and surface finishes makes the AQUA range suitable for public, commercial or industrial premises.

The range of self-closing valves provides a choice of designs with or without temperature mixing. The water flows when the tap is depressed after a defined period the tap automatically closes.

Taps must fit to their applications. Robustness, reliability and a hygienic material surface are key for commercial premises.

Good aesthetic design needs to be combined with reliable technology to meet the high demands placed on modern sanitary fittings which makes these taps suitable for stylish applications in public, semi-public and commercial sanitary rooms.

FEATURES_

- Polished chrome plated brass
- Deck and wall mounted options available
- Minimal easy clean designs
- For connection to cold water or pre-mixed warm water supply
- Suitable for various applications

AQUAMIX

- Sturdy all metal construction
- Adjustable flow time
- Water saving self-close



AQUAMIX
Self-closing single mixer with 233mm projection



AQUAMIX-S
Self-closing single mixer



AQUAMIX-C
Self-closing single mixer

AQUALINE

- Sturdy all metal construction
- Adjustable flow time
- Anti-blocking system (ABS)



AQUALINE-S
Self-closing bib tap



AQUALINE-Therm
Self-closing single mixer with 176mm projection



AQUALINE-C
Self-closing pillar tap



AQUALINE-S
Self-closing pillar tap



FRANKE

PURELINE

- Polished chrome plated brass
- Deck and wall mounted options available
- Minimal easy clean designs
- For connection to cold water or pre-mixed warm water supply
- Suitable for various applications
- Temperature selection lever



PURELINE
Self-closing pillar mixer with
temperature selection lever



PURELINE
Self-closing pillar tap



PURELINE
Self-closing bib tap



PURELINE
Self-closing single
mixer with swivel outlet

AQUAFIT

- Polished chrome plated brass
- Minimal easy clean designs
- Deck and wall mounted push and lever options available
- Adjustable temperature stop
- Thermostatic scald-protection available (single lever taps only)
- For connection to cold water or pre-mixed warm water supply
- Mixing cartridge and ceramic discs



AQUAFIT
Single lever mixer



AQUAFIT
Self-closing single mixer



AQUAFIT
Single lever mixer



AQUARITHERM™ TAPS

AQUARITHERM™ TAPS

Designed with healthcare environments in mind, the AquariTherm™ range combines infection control features. It also offers simple isolation for quick and easy servicing and stylish aesthetics meeting the needs of healthcare professionals and technical support staff.

The patented isolation feature allows the tap to be removed for servicing or exchange without the need to isolate the water or remove any panels. This feature reduces any down time during servicing or disinfection, with easy to access filters these can be removed replaced or cleaned in a matter of seconds.

As well as unique servicing features, the AquariTherm™ tap is designed with no sharp corners allowing for easy cleaning.

The AquariTherm™ tap is available in either automatic or manual specification, making it ideal for a range of healthcare applications. The automatic specification offers a no-touch solution, with an ergonomic integrated downward facing sensor, with adjustable range and automatic purge facility.

Both the manual and automatic models include a mechanism to ensure that hot water is mixed before being delivered to the users' hands, ensuring there is no 'hot spike' effect for the user of the tap. Additionally the tap body stays cool during use, even with prolonged running of hot water.

ANTIMICROBIAL OUTLET_

Moulded using Biomaster; proven to help reduce harmful bacteria common in healthcare environments, including; Pseudomonas, Legionella MRSA, E.Coli, Listeria, Salmonella and Campylobacter by up to 99.9%.



AUTO FEATURES_

- HTM64 compliant
- Tap body DZR brass
- Ergonomic easy clean surfaces
- Quick and easy to service
- No-touch operation
- No hot surface area
- Adjustable sensing range
- Easy to remove filters & serviceable valves
- Auto purge facility built in
- Reduced hot spikes
- Chlorination setting
- Record real-time data from the fully programmable sensor with the handheld programmer see page.22
- Anti-Microbial ABS outlet with unrestricted flow rate



MANUAL FEATURES_

- HTM64 compliant
- Tap body DZR brass
- Ergonomic with easy clean surfaces
- Tap handle positioned further away from the wall than other healthcare taps
- Quick and easy to service
- No hot surface area
- Easy to remove filters & serviceable valves



The manual and remote sensor taps feature a removable spout for servicing (above)



AQUARITHERM™ TAP WITH SEPARATE PROGRAMMABLE SENSOR

- DZR brass tap body
- Ergonomic easy clean surfaces
- No-touch operation
- Easy to remove filters and serviceable valves
- Easily removable tap outlet for cleaning or renewal
- Adjustable run time
- Anti-vandal mode on/off and adjustable time
- Automatic and time adjustable purge
- Chlorination mode
- Record real-time data from the Programmable Sensor with the DVS Handheld Programmer - see page.22
- USB connection to upload real-time data to PC

Easy to remove fully serviceable parts in both the AquariTherm™ Automatic and Manual specifications:



Manual version

SERVICE KITS

To maintain hygiene and the efficient running of the AquariTherm™ tap, there are 2 service kits available for both manual and automatic specifications:



- KIT.1
- 2x Filter cartridges
 - 2x Check valves (inserted)
 - 1x Flow straightener (unrestricted)



- KIT.2
- 1x Thermostatic cartridge



EZ SPOUT™ RANGE STAINLESS STEEL

EZ SPOUT™

This latest range of modern, minimalistic and highly practical removable spouts are designed for the most demanding healthcare environments. The spout quickly and easily removes for servicing, ensuring minimal disruption. With a 316 Stainless Steel solid body, smooth flow channels and easy to clean shape, the DVS EZ Spout™ maintains high levels of hygiene to reduce cross contamination.



FEATURES_

- Slim, minimalistic, modern appearance
- Versions available with or without outlet
- Easily removable spout body for sterilising
- 316 Stainless Steel body and water way
- Can be used in conjunction with the Programmable Sensor (see page.22)



The twist and lock mechanism ensures quick and easy removal of all DVS EZ Spouts™ from the mounting spigot for efficient, disruption-free cleaning and maintenance.



Point-of-Use Filter

There may be certain high risk areas where point-of-use filters may be considered. DVS have specially designed an adaptor to accept point-of-use filters on compatible spouts. Disposable water filters protect against Legionella and other bacteria in the water supply.

The validated 0.2 µm filter membrane protects against Legionella spp, which are known contaminants of hospital water supplies and can lead to nosocomial infections.

FEATURES_

- Quick connection / instant protection
- Validated to 0.2 µm filter membrane
- Individually tested
- Pre-sterilised - ready to use





Featuring anti microbial silver ion technology

MEDI SPOUT™ RANGE ANTI-MICROBIAL

MEDI SPOUT™

This latest range of modern, minimalistic and highly practical disposable Anti-Microbial spouts are designed for the most demanding healthcare environments. The spout quickly and easily removes for replacement, maintaining high levels of hygiene whilst causing minimal disruption.

The spouts are made from injection moulded Anti-Microbial ABS using Biomaster silver ion technology.

Biomaster ensures effective antibacterial protection for the effective lifetime of the product, helping to keep surfaces clean and hygienic, and reduces the threat of cross-contamination.

Featuring an open outlet and smooth flow channels, the DVS Medi Spout™ reduces potential areas for biofilm growth.

FEATURES_

- Slim, minimalistic, modern appearance
- Durable chrome plated finish
- Anti-Microbial ABS with added Biomaster silver ion technology for long-term defence against harmful bacteria.
- Open outlet to reduce areas for biofilm growth
- Easy to remove for spout replacement
- Push-fit spiggot and concealed grub screw mechanism
- Can be operated using DVS sensors and Tap Control System (see page.22)



PUSH-FIT MECHANISM

The push-fit mechanism and secure mounting spiggot ensures quick and easy replacement of all DVS Medi Spouts™ for efficient, disruption-free servicing and replacement.

Once spout body is pushed on to the spiggot, a concealed grub screw is fitted for security.



ROBUST, HYGIENIC & EASY TO CLEAN SPOUTS BY DVS...

WM & DM SPOUTS

TAP SPOUTS (NO ELECTRONICS)

DVS offer a range of wall and deck mounted options, suitable for various applications including high security.

The DVS range of deck and wall mount spouts can be controlled via the standard tap control box, using infra-red or tactile sensors or the fully programmable sensor, offering either option allows customisable settings (for further information see pages 21-22).

Simply contact the DVS technical sales team to discuss your specific application, to ensure that you obtain the optimum control solution.



High security
30° tap spout
S/S brushed



High security
45° tap spout
S/S brushed

HIGH SECURITY WM 30° & 45° SPOUT_

- 316 Stainless Steel (brushed finish)
- Ligature resistant design
- Standard 5LPM outlet (other options available)
- Easy to clean shape

HIGH SECURITY DM SPOUTS_

- 316 Stainless Steel
- Brushed and polished finishes
- Ligature resistant design
- Removable outlet (requires DVS removal key)
- Brass BSP tails (tap and bath spouts only)
- Suitable for various applications
- Anti-vandal design



Deck mounted basin nozzle
AT07-054



Deck mounted bath spout
AT07-059



Deck mounted basin spout
AT07-056

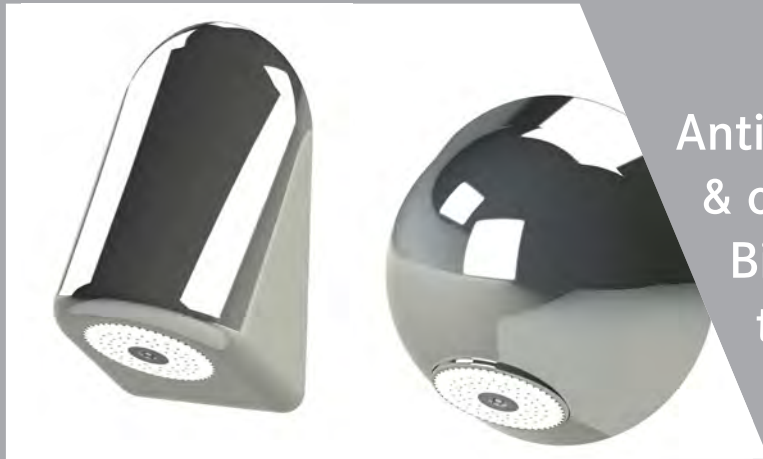


Angled deck mounted basin spout
AT07-092



OUTLET REMOVAL KEY_

- 316 Stainless Steel (brushed)
- Easy removal of outlet for efficient servicing of spouts



Anti-microbial ABS body & one piece outlet with Biomaster silver ion technology...

SHOWERHEADS



SHOWER HEADS

DVS offer various high security solutions that are robust, attractive and easy to install. Both wall and ceiling mounted options are available, and all feature the One-piece anti-microbial ABS outlet using Biomaster silver ion technology.

Models can be used in conjunction with the Shower Control System. The below showerheads are intended for installations where everything except the showerhead and sensor are concealed behind a wall or panel.

316 STAINLESS STEEL_



Ceiling mounted high security showerhead



Wall mounted 30° high security showerhead

FEATURES_

- 316 Stainless Steel body
- One piece Anti-Microbial ABS outlet (4 different flow rates available)
- Water efficient
- Tamper proof security screw
- Suitable for high security applications

ANTI-MICROBIAL ABS_

These shower heads are made from injection moulded Anti-Microbial ABS using Biomaster silver ion technology.

Biomaster ensures effective antibacterial protection for the effective lifetime of the product, helping to keep surfaces clean and hygienic reducing the threat of cross-contamination.

The One-piece anti-microbial ABS outlet can be removed for regular servicing and replacement.

Strong, durable and ligature resistant, these heads are suitable for various applications including high security environments

FEATURES_

- Injection moulded anti-microbial ABS body
- One-piece anti-microbial ABS outlet (4 different flow rates available)
- Tamper proof security screw
- Suitable for high security applications
- Available in chrome or brushed satin finish



Wall mounted high security brushed satin finish ABS dome showerhead



Wall mounted high security chrome finish ABS sloped showerhead



**DVS SHOWER HEADS ARE ROBUST,
STYLISH AND OFFER AN AVERAGE
50% WATER SAVING...**

SHOWERS STAINLESS STEEL

DVS SHOWERS

A wide range of sensors, control systems, shower heads and showers combine to create water efficient showering for a wide range of environments, from anti-ligature products to robust showers designed for heavy traffic areas.

Average savings of up to 50% can be achieved using DVS showers.

Major client sectors include NHS Estates, HMP Estates, Education and Local Authorities.

SHOWER TOWERS

DVS shower towers have a choice of either programmable / wave-on sensor, tactile switch or push button (self-closing) operation, offering energy efficiency and water saving benefits.

Electronic operation controls are supplied with pre-set settings but can be customised quickly and easily.

The towers are supplied pre-plumbed with valves safely housed within the tower casing.

FEATURES_

- Designed for high security applications
- Robust 1.5mm Stainless Steel construction
- Wave-on, tactile or push button operation
- Easy installation
- Available sloped top or ceiling height with or without TMV
- One piece Anti-Microbial ABS shower outlet (4 different flow rates available)

Also available in white powder coated finish ^^



Ceiling height shower tower



Stainless Steel is 100% recyclable

CONTROL OPTIONS >

Controls to suit all applications, available on both shower towers



Programmable sensor (featured)



Tactile sensor



Self-closing push button



Sloped top shower tower



...DURABILITY & STRENGTH



PRE-PLUMBED

- Copper pipework
- Ceiling height model available with or without TMV3



HEAD, RAIL & HOSE KIT

The ceiling height shower tower is also available with a complete shower head, rail and hose kit, which is operated via Dart Valley's standard wave-on sensor.

The shower head, rail and hose kit (without shower tower) is also available separately, for existing direct pipework installations.



↑ Shower head, rail and hose kit

FEATURES_

- Robust 1.5mm Stainless Steel construction
- Easy shower head height adjustment
- Head, rail and hose chrome plated finish
- Pre-plumbed system
- Polished wave-on shower sensor

<< Ceiling shower tower complete with head, rail and hose kit operated by the DVS wave-on sensor



WAVE-ON SENSOR

- Hygienic no-touch operation
- Polished 50mm chrome bezel
- High performance and reliability



DUAL OUTLET SHOWER

DUAL OUTLET TOWER SHOWER

Featuring a dual outlet, this means that assisted and unassisted showering can be achieved, making it well suited to high security healthcare applications. Switching between outlets is quick and easy due to the inbuilt automatic diverter valve.

Assisted mode

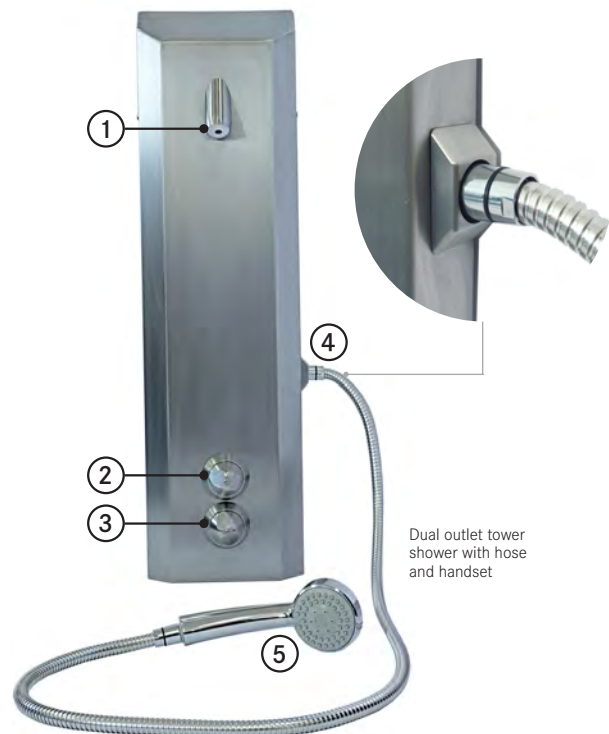
Attach the 2m hose and handset to the side outlet, inbuilt diverter valve will switch over automatically.

Unassisted mode

Utilising the fixed anti-ligature shower head only attached to the top of panel.

FEATURES_

- Designed for high-security healthcare applications
- Tamper proof
- Ligature resistant controls
- High impact resistance
- Robust 1.5mm (front) and 2mm (back) 316 Stainless-Steel Construction
- Detachable hose and handset
- Auto switch over when hose and handset are attached
- Easy to install
- Pre-plumbed rigid copper pipework
- Powder coated white version also available

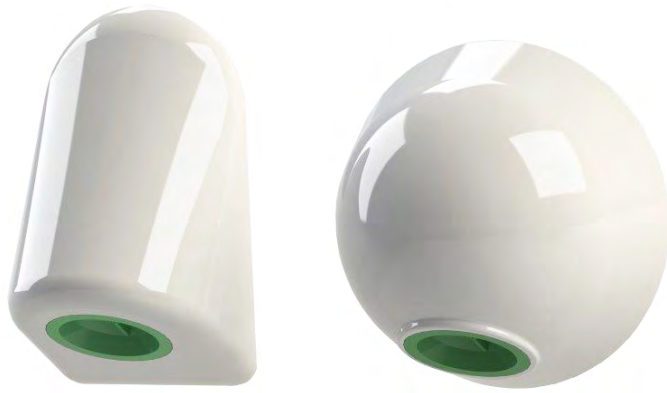


Dual outlet tower shower with hose and handset

KEY

- 1 Anti-ligature S/S shower head
- 2 ON/OFF and flow control
- 3 Temperature control
- 4 Dual/secondary outlet
- 5 Detachable head and hose

To view the full DVS showers range visit:
www.dartvalley.co.uk



INJECTION MOULDED ANTI-MICROBIAL
ABS USING BIOMASTER SILVER ION
TECHNOLOGY...



MEDI SHOWER™

MediShower™ is a new patented anti microbial and water saving shower head and hose. Easy to maintain, hygienic and efficient, the MediShower™ is well suited to healthcare environments, where containing the spread of infection and meeting budgetary requirements are key priorities.

Using Biomaster technology - silver has been used in its pure form for many centuries to prevent growth of bacteria. Incredibly durable, long lasting and highly active, when Biomaster is added in to a product it is dispersed throughout the item, will not wash off and will last its entire active lifetime.

Biomaster has been proven to help reduce harmful bacteria common in healthcare environments, including; Pseudomonas, Legionella, MRSA, E.Coli, Listeria, Salmonella and Campylobacter by up to 99.9%.

MediShower™ is also 100% designed and manufactured in the UK.

FEATURES_

- Anti-bacterial using Biomaster silver ion technology
- Medi-shower replacement inserts promote a regular quarterly cleaning regime
- Low maintenance costs
- Reduced risk of infection
- Easy to clean / retrofit
- 5 year product warranty
- 5 year guarentee against limescale clogging



MEDI-FLUSH INSERTS_

- Colour coded system represents calendar quarters
- Quick and easy replacement using the MediShower™ key





FRANKE

FRANKE SHOWERS

Shower fittings are becoming ever more sophisticated when it comes to water saving, ease of installation and operation. The use of robust materials, reliable technology and surface finishes makes the FRANKE shower range suitable for public, commercial or industrial premises.

The FRANKE range includes the AQUACONTACT and SMARTWAVE panels, featuring latest technologies and modern aesthetics, catering for various applications. There are a choice of fronts across the range including; Stainless Steel, mineral MIRINAT-S or glass.

AQUACONTACT STAINLESS STEEL

The range uses Start - Stop infrared sensor operation, with or without thermostat mixer control, some versions with moulded plastic shower gel tray insert.

AQUACONTACT Stainless Steel panels use either the AQUAJET Comfort or AQUAJET Slimline shower heads.

FEATURES_

- Start - Stop infrared sensor operation with integrated hygiene flushing function
- Thermostat fittings with convenient temperature selection
- Stainless Steel with optional easy clean InoxPlus surface
- Available with either AQUAJET Comfort or AQUAJET Slimline shower heads
- Optional remote control for setting function parameters



AQCT0005

AQCT0006

FEATURES^

- Stainless Steel with optional easy clean InoxPlus surface
- Shower-gel tray insert (AQCT0018 only)
- Thermostatic mixer DN15
- Touch sensor (start/stop)
- Battery or mains supplied



AQCT0018

AQCT0017

FEATURES^

- Stainless Steel with optional easy clean InoxPlus surface
- Shower-gel tray insert (AQCT0006 only)
- Touch sensor (start/stop)
- Battery or mains supplied



FRANKE

AQUACONTACT MIRANIT-S

The range uses Start - Stop infrared sensor operation, with or without thermostat mixer control, some versions feature an all-in-one moulded shower gel shelf.

Panel housing is made of MIRANIT-S solid white, a polyester resin-bonded mineral material with a smooth, pore-free surface and satin finish, (temperature-resistant up to 80°C).

FEATURES_

- Start - Stop infrared sensor operation with integrated hygiene flushing function
- Thermostat fittings with convenient temperature selection
- Hygienic Miranit-S mineral material
- All-in-one moulded shower gel shelf
- Battery or mains supplied
- Available with either AQUAJET Comfort or AQUAJET Slimline shower heads (see below)

AQUACONTACT AVAILABLE HEADS



AQUAJET Slimline



AQUAJET Comfort



AQCT0033



AQCT0039
with shower
gel shelf and
thermostat

SMARTWAVE

Made up of only 2 elements, the SMARTWAVE shower panel can be installed in a short space of time, and is easily accessible for commissioning and maintenance.

Housing is made of Makroblend® polymer material with stain resistant properties.

Featuring a function block mounted directly on the shower head to reduce water stagnation.

Also features an adjustable anti-scale head and soft button operated self-closing mixer DN15.

FEATURES_

- Hygienic Makroblend® chemical resistant housing
- Anti-scale adjustable angle shower head
- Aquamix self-closing mixer
- Soft trigger operation
- Adjustable flow time



To view the full FRANKE showers range visit:
www.dartvalley.co.uk



CONTROLS

TAP CONTROL SYSTEM

The Tap Control System can be used to control mixed water for 1 or 2 taps, or to control both hot and cold on a single tap using 2 sensors. The control system can be used with the DVS wave-on or tactile sensors (see right).

The system also features an in-built purge control option, which helps to avoid water stagnation.

When the user passes their hand past the sensor or pushes the tactile switch (depending on which is installed), the Control System activates the solenoid valve, which runs for a pre-set time before automatically closing and stopping the tap.

Various settings can be customised quickly and easily from within the control box if necessary.



Tap Control System box

FEATURES_

- Control up to 2 tap stations
- Adjustable run time
- High performance and reliability
- Built-in purge control option to avoid stagnation
- Standard mains power (battery version also available)

SENSORS

Wave-on sensors or tactile switches with hot or cold indication inserts are available for controlling showers and taps, either as part of DVS control systems and for use with shower towers.



Wave-on sensor 50mm (hot)



Wave-on sensor 50mm (cold)



Tactile switch 50mm (red)



Tactile switch 50mm (blue)

FEATURES_

- Wave-on sensor or tactile operation
- High performance and reliability
- 316 Stainless Steel bezel
- Ligature resistant design

ABS SENSOR

The DVS chrome plated ABS sensor, features a 40mm bezel and comes in either programmable or standard electronic version.

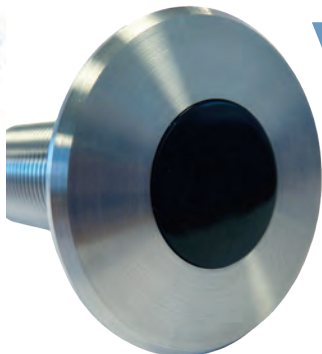
- Robust ABS in chrome finish
- High performance and reliability
- Programmable or standard electronic versions available



ABS chrome sensor 40mm (blue)



ABS chrome sensor 40mm (blue)



Reliable, water saving controls for a range of applications



PROGRAMMABLE SENSOR

All DVS products can be controlled by the Wall Mounted Programmable Sensor and Handheld Programmer, these products allow quick and easy adjustment of settings, including; run-on time, range, purge and more. Real time data can be uploaded from the Programmer via the integrated USB port, to allow accurate monitoring of water efficiency.



FEATURES_

- Adjustable run time
- Adjustable range for different length spouts
- Anti-vandal mode on / off and adjustable time
- Automatic and time adjustable purge
- Chlorination mode
- User detection or wave-on / wave-off function
- USB connection to upload real-time data to PC
- Tap read function produces data on; total run time and total number of operations and purges

SHOWER CONTROL SYSTEM

The Shower Control System can be used for 1 or 2 shower heads. It will effectively give any standard showerhead automatic wave-on control. The shower control system also features a built-in purge control option to avoid water stagnation.

When the user passes their hand past the sensor or pushes the tactile switch (depending on which is installed), the Control System activates the solenoid valve, which runs for a pre-set time before automatically closing and stopping the tap.

Various settings can be customised quickly and easily from within the control box if necessary.



Shower Control System box

FEATURES_

- High performance and reliability
- Control up to 2 shower stations
- Adjustable run time and built-in purge control
- Standard mains power (battery version also available)

CONTROL HOT WATER
DELIVERY SAFELY &
EASILY...



BLENDING VALVE

FRANKE



TEMPERATURE BLENDING VALVE ADJUSTER

In many public facilities supplying water at 41° is ideal. If however the requirement is to provide 41° with user adjustment between this temperature and cold (determined by the cold input temperature), then the temperature blending valve adjuster can be added to accommodate this facility.

The blender adjuster is designed to be robust, easy to use and combine good aesthetics, therefore making this suitable for a range of applications.

There are 3 standard fixings available to suit a range of wall thicknesses from 1.5mm to 280mm. Special length fixings can be provided where required.

FEATURES_

- Chrome plated brass
- Robust construction
- Easy to install
- Available for different wall thicknesses



PLEASE NOTE:

It is strongly recommended that a thermostatic mixing valve is fitted prior to the blending valve, so that the hot water temperature can be safely controlled.

FRANKE AQUALINE-THERM

AQUALINE-Therm self-closing thermostatic mixers feature scald-proof safe-touch technology ensuring the chrome plated brass housing remains safe to the touch at all times.

FEATURES_

- High polished chromium plated brass housing
- Thermostat handle with over-twist protection
- Adjustable run time and built-in purge control
- Lateral valve control
- Adjustable flow duration
- For conon to hot and cold water supplies



SHOWER COMBINATION

Wall mounted shower and mixer combination, featuring shower pipe and AQUAJET-Slimline shower head with plastic jet plate with anti-scale system.



PRODUCT LIST

PAGE 3



AT03-003

Aquarius DM A32 tap spout only in S/S polished



AT03-023

Aquarius DM A45 Doc M tap spout only in S/S polished



AT03-013

Aquarius DM A45 tap spout only in S/S polished



AT02-001

WM Aquarius (brushed) 150mm



AT02-011

WM Aquarius (brushed) 200mm



AT02-021

WM Aquarius (brushed) 250mm

...CONTINUED

PAGE 4



AT02-024

WM Aquarius (brushed) and P-O-U filter 250mm



AT03-041

Aquarius DM high neck tap spout in S/S brushed



AT03-031

Aquarius DM short neck tap spout in S/S brushed



AT01-001

Classic tap spout in chrome



AT01-011

Classic swan tap spout in chrome



AT03-061

Aquarius DM tall pillar tap in chrome

...CONTINUED

PAGE 5



AT03-051

Aquarius DM short pillar tap in chrome



AQUA131

Protronic-S wash basin tap in polished chrome



PRTR0002

Protronic-T wash basin tap in polished chrome



AQRE131

Protronic-C wash basin tap in polished chrome



PRTR0018

Wash-S thermostatic electronic mixer tap



ZPRTR0001

Remote control for Wash-S taps

PAGE 6

PAGE 7



MT00-005

WM extended push tap



MT00-003

WM push tap



MT00-001

DM push tap with cold indicator



MT00-007

DM lever operated clinic tap



AQRM272

Self-closing single mixer with 233mm spout projection



AQUA200

AQUAMIX-S self-closing single mixer tap

...CONTINUED

PAGE 8



AQUA203

AQUALINE-C self-closing pillar tap



AQUA202

AQUAMIX-C self-closing single mixer tap



AQUA201

AQUALINE-S self-closing pillar tap



AQLT0039

Self-closing single mixer with 176mm spout projection



AQUA205

AQUALINE-S self-closing bib tap



PURE0005

PURELINE Self-closing pillar mixer with temperature selection lever

...CONTINUED



AQUA201W

PURELINE Self-closing pillar tap



AQFT0007

AQUAFIT single lever mixer wall mounted tap



AQMXS0002

AQUAFIT mixer tap



PURE0003

PURELINE Self-closing mixer tap



AQFT0001

AQUAFIT single lever mixer deck mounted tap



PURE0006

PURELINE Self-closing single mixer with swivel outlet

PRODUCT LIST

PAGE 9



AT04-001

AquariTherm™ Tap
(Automatic version)



MT04-001

AquariTherm™ Tap
(Manual version)



AT00-053

One-piece anti-microbial
outlet



AC06-002

AquariTherm service kit;
filter cartridge, check
valve and flow straightner



AC06-001

AquariTherm service kit;
thermostatic cartridge



AT07-101

EZ Spout 90 HC

...CONTINUED

PAGE 10

PAGE 11



AT07-102

EZ Spout 90



AT07-104

EZ Spout 60 HC



AT07-103

EZ Spout 60



AT00-039

PALL filter

AT00-040 (Filter adapter)



AT07-105

Medi Spout 90



AT07-106

Medi Spout 60

PAGE 12

PAGE 13



AT07-040

High security tap spout
45° 113mm long S/S
brushed



AT07-041

High security tap spout
30° 98mm long S/S
brushed



AT07-056

Deck mounted basin
spout S/S brushed



AT07-059

Deck mounted bath
spout S/S brushed



AT07-054

Deck mounted basin
nosel S/S brushed



AT07-092

Angled deck mounted
basin spout

...CONTINUED

PAGE 14

PAGE 15



AT07-125

Outlet removal key S/S



SH07-042

Ceiling mounted high
security shower head



SH07-040

30° high security shower
head S/S brushed



SH07-085

WM High security
ABS dome showerhead
in chrome finish



SH07-086

WM High security
ABS showerhead in
chrome finish



SH01-006

Shower tower
(ceiling height)
with HS head
and sensor

...CONTINUED

PAGE 16

PAGE 17

PAGE 18



SH01-002

Shower tower
(sloped top)
with HS head
and sensor



SH01-011

Shower tower
(ceiling height)
with head, rail
and hose kit



SH00-019

Shower head,
rail and hose
kit



SH01-013

Dual outlet
shower tower
with head
and hose kit



SH07-075

MediShower head (insert
not included)



SH07-077

MediShower key (sold
individually)

...CONTINUED

PAGE 19

PAGE 20



SH07-076

MediShower inserts
(sold individually)



MS00-001

MediShower sloped
head (insert not
included)



MS00-002

MediShower domed
head (insert not
included)

AQCT0005

AQUACONTACT
shower panel
S/S



AQCT0018

AQUACONTACT
shower panel
with thermostat,
gel tray - S/S
with InoxPlus

AQCT0006

AQUACONTACT
shower panel,
gel tray - S/S
with InoxPlus



AQCT0017

AQUACONTACT
shower panel
with thermostat,
S/S with InoxPlus



AQUA754

AQUAJET Slimline
shower head

PRODUCT LIST

...CONTINUED

PAGE 21

 AQCT0033 AQUACONTACT shower panel MIRANIT-S	 AQCT0039 AQUACONTACT shower panel MIRANIT-S with showergel shelf and thermostat	 AQMX0008 AQUACONTACT shower panel with self-closing mixer	 AT07-001 Tap Control System	 AC02-041 Anti-vandal wave-on sensor (red insert) 50mm bezel
--	--	---	--	--







...CONTINUED

PAGE 22

 AC02-040 Anti-vandal wave-on sensor (blue insert) 50mm bezel	 AC02-047 Anti-vandal tactile switch (red insert) 50mm bezel	 AC02-046 Anti-vandal tactile switch (blue insert) 50mm bezel	 AC02-035 ABS sensor 40mm bezel (blue) in chrome finish	 AC02-036 ABS sensor 40mm bezel (red) in chrome finish	 AC02-017 Programmable tap sensor S/S 50mm bezel
---	--	---	---	--	--

...CONTINUED

PAGE 23

 AC01-001 Handheld programmer with USB interface	 SH07-001 Shower Control System	 SH00-011 Temperature blending valve adjuster (chrome)	 AQLT0053 AQUALINE-Therm self-closing thermostatic mixer- hand connection	 AQLT0045 AQUALINE-Therm self-closing thermostatic mixer	 AQLT0049 AQUALINE-Therm self-closing thermostatic mixer with AQUAJET slimline head
---	--	---	---	---	--

BROCHURES

All brochures listed are available to download from our website at: www.dartvalley.co.uk



DVS Healthcare



DVS Safe Ensuites



AQUA 3000 Open



FRANKE Transport



FRANKE Innovations



FRANKE EXOS



For project support and bespoke product information including; tech spec sheets, instruction manuals, BIM models brochures and more, please visit our website at: www.dartvalley.co.uk or alternatively, email us at: sales@dartvalley.co.uk



Dart Valley Systems Ltd
Kemings Close
Long Road
Paignton
Devon
TQ4 7TW
United Kingdom

t +44 (0)1803 529021
f +44 (0)1803 559016
e sales@dartvalley.co.uk
w www.dartvalley.co.uk

