

Fault Finding

2 Channel Controls - UC07-001(Urinal)/AT07-001(Tap)/SH07-001(Shower)/SH07-020(Bath)

- **No Power - No Lights showing on PCB. (all variants)**
 - First check power supply fuse. A red LED (**11**) should be illuminated in the top right inside the control box. If LED is not lit. Check Fused Spur, Primary fuse (**14**) and Secondary fuse (**16**). Spare fuses are supplied inside the lid of the control box. Call +44 (0) 1803 529021 to order replacements.

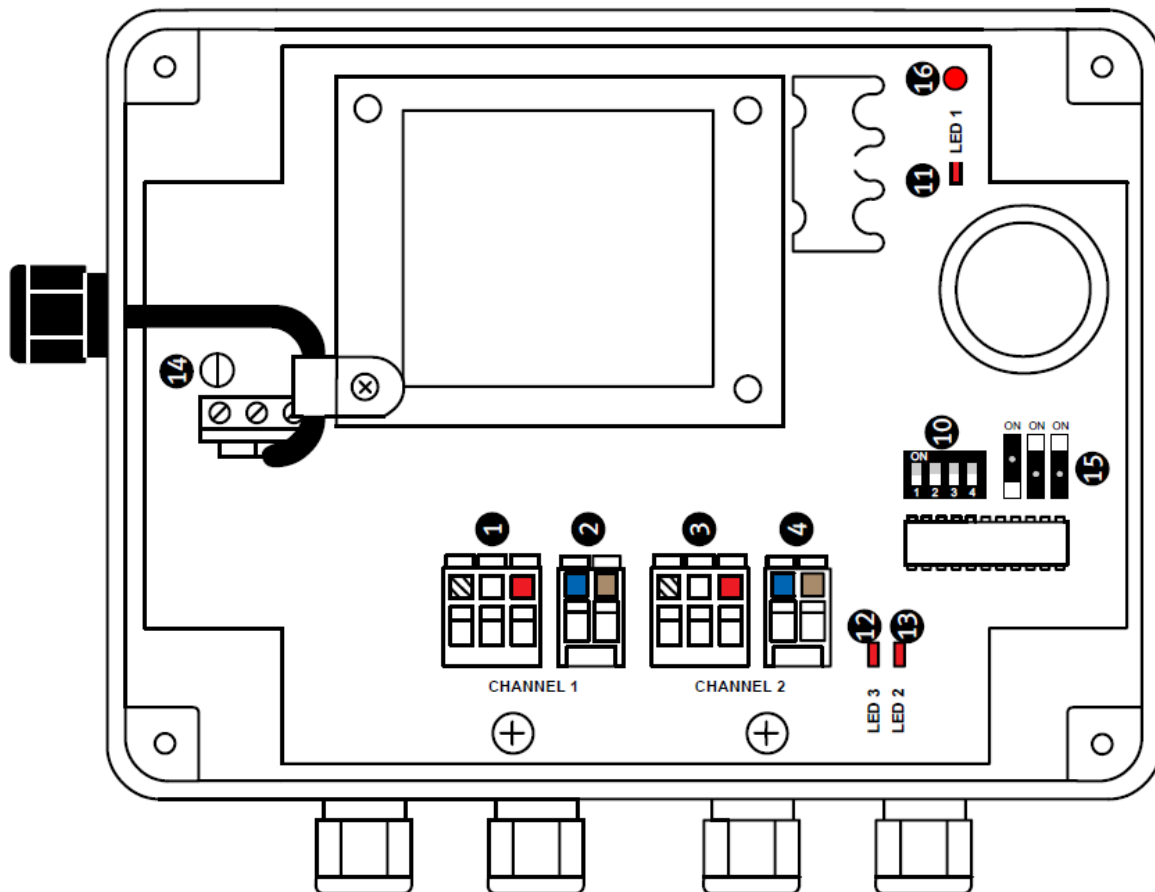


fig.1

UC07-001 (Urinal) ONLY

• **Urinal not flushing.**

- A time setting must be set onto the dip switches (10). Power down, enter the desired run time and power up. (note - you must power down before making any setting changes.)
- A user must be stood at the urinal, in front of the sensor for at least 12 seconds to be recognised as a user. Once the user moves away the solenoid valve will open for the set flush time.
- Check sensors are sensing correctly and are not picking up a reflection:
 1. Power down, turn all Dip switches to the off position and power up. The unit is now in test mode.
 2. LEDs 3 & 2 (12 & 13) relate to Sensor Channels 1 & 2.
 3. Making sure there is no obstruction in front of the sensors, LEDs 3 & 2 should be off. If an LED is on or flickering, check there is no obstructions or reflective surfaces such

as

a mirror or a sensor on the opposite wall causing a reflection.

4. Remove obstruction or reflective surface and proceed to set up.

• **Short sensing range.**

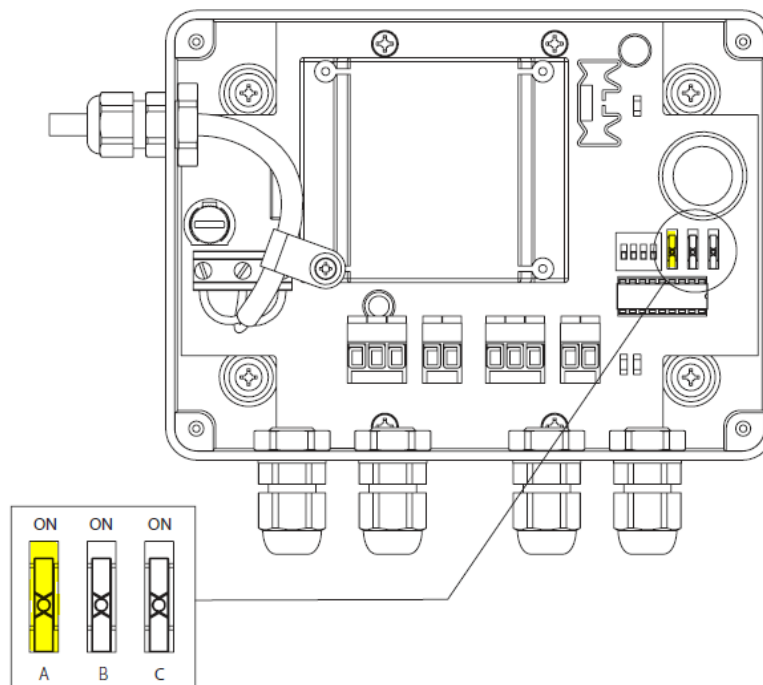
- Urinal Sensors will have a sensing range between 500mm & 600mm depending ambient temperature and lighting. If the sensor is not sensing up to 500mm please contact Technical Support for advice +44 (0) 1803 529021

• **Urinal flushing when users walk past sensor**

- Note - High Vis clothing can set off the sensors.
- If sensors are located in a narrow walkway users walking by may set off the Pre-flush if active.

To stop this turn the Pre-flush off:

1. Power down. Turn Option switch A off. (fig.2)
2. Power up.
3. Pre-flush is now disabled.



All models

fig.2

- **Poor flow through solenoid valve**

- Check flow is not restricted prior to the solenoid valve
- Check solenoid valve orientation on the pipework is correct.
- Check for obstruction in outlet pipes
- Check supply water pressure is 1 bar or higher. If lower than 1 bar an alternative solenoid valve maybe required - Call Technical Support +44 (0) 1803 529021

AT07-001(Tap) & SH07-001(Shower) ONLY

- **Tap running for too long or Shower not running long enough**

- Option switch A toggles between Tap mode and Shower mode. See fig.2
 1. Power Down
 2. Turn ON to select Tap mode = run times in seconds or...
 3. Turn OFF to select Shower mode = run times in minutes.

SH07-020(Bath) ONLY

- **Outlets pulsing alternately**

- Bath Control set in Single valve mode.
 1. Power Down
 2. Set option switch C On to turn on Dual Valve Mode. See below
 3. Power Up

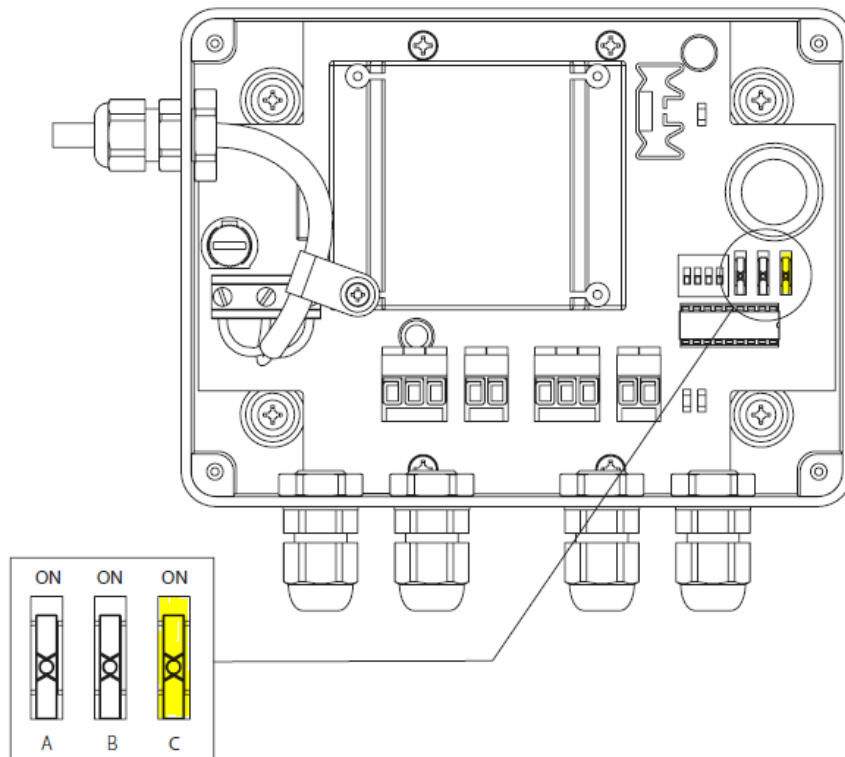


Fig.3