



## PRICE LIST 2018

Codes, descriptions & RRP's for the full DVS product range



<b>WC Flushing</b>	2 - 5
<b>Urinal Controls</b>	6 - 7
<b>Automatic Taps</b>	8 - 13
<b>Push Taps</b>	14
<b>Showers &amp; Bath Filling</b>	15 - 17
<b>Water Management</b>	18
<b>Scrub Up Troughs</b>	19
<b>Washroom Hygiene</b>	20
<b>Safe Ensuites</b>	21 - 27
<b>Valves &amp; Accessories</b>	28 - 29
<b>Franke Products</b>	30 - 39
<b>Franke Accessories</b>	40 - 44
<b>Franke EXOS</b>	45 - 46

## WC Flushing

Stylish and discreet, our range of no-touch WC flushing options have tried and tested designs, which deliver an accurate and reliable performance.



WC Flushing		
Code Number	Description	2018 RRP
<b>WC Flushing Kits - Mains operated</b>		
WC03-002	WC Flushvalve kit with in-built overflow and wave-on sensor - 1 ½" base - C/W 3m cable	£284.60
WC03-003	WC Flushvalve kit with in-built overflow and wave-on sensor - 2" base - C/W 3m cable	£284.60
WC03-007	WC Flushvalve kit with in-built overflow and wave-on sensor - 1 ½" base - C/W 15m cable	£310.07
WC03-008	WC Flushvalve kit with in-built overflow and wave-on sensor - 2" base - C/W 15m cable	£310.07
WC03-012	WC Flushvalve kit with in-built overflow and wave-on sensor 50mm chrome bezel - 1 ½" base - C/W 3m cable	£284.60
WC03-013	WC Flushvalve Kit with in-built overflow and Programmable Sensor - 1 ½" base - Low voltage version C/W mains PSU	£355.34
WC03-014	WC Flushvalve Kit with in-built overflow and Programmable Sensor - 2" base - Low voltage version C/W mains PSU	£355.34
WC03-022	WC Flushvalve kit with in-built overflow and anti-vandal wave-on sensor - 1 ½" base - C/W 3m cable	£298.08
WC03-023	WC Flushvalve kit with in-built overflow and anti-vandal wave-on sensor - 2" base - C/W 3m cable	£298.08
WC03-028	WC Flushvalve kit with in-built overflow and tactile switch - 1 ½" base - C/W 3m cable	£298.08
WC03-032	WC Flushvalve kit with in-built overflow and wave-on sensor - 1 ½" base - C/W 3m cable & Manual override kit	£374.48
WC03-033	WC Flushvalve kit with in-built overflow and wave-on sensor - 2" base - C/W 3m cable & Manual override kit	£375.13
WC03-036	WC Flushvalve kit with in-built overflow with dual wave-on sensors - 1 ½" base - C/W 3m cable	£356.50
WC03-037	WC Flushvalve kit with in-built overflow with dual wave-on sensors - 2" base - C/W 3m cable	£356.50
WC03-040	WC Direct Flushing kit and wave-on sensor & ¾" BSP solenoid valve	£419.42
<b>WC Flushing Kits - Battery operated</b>		
WC03-050	WC Flushvalve Kit with in-built overflow and wave-on sensor - 1½" base C/W 3m cable & 6 x C Cell batteries	£258.72
WC03-051	WC Flushvalve Kit with in-built overflow and wave-on sensor - 2" base C/W 3m cable & 6 x C Cell batteries	£258.72
WC03-052	WC Flushvalve Kit with in-built overflow and programmable sensor - 1½" base C/W 3m cable & 6 x C Cell batteries	£306.44
WC03-053	WC Flushvalve Kit with in-built overflow and programmable sensor - 2" base C/W 3m cable & 6 x C Cell batteries	£306.44
WC03-058	WC Flushvalve Kit with in-built overflow and wave-on sensor - 1½" base C/W 3m cable, 6 x C Cell batteries & Manual override kit	£348.59
WC03-059	WC Flushvalve Kit with in-built overflow and wave-on sensor - 2" base C/W 3m cable, 6 x C Cell batteries & Manual override kit	£348.59
WC03-060	WC Flushvalve Kit with in-built overflow and programmable sensor - 1½" base C/W 3m cable, 6 x C Cell batteries & Manual override kit	£396.31

WC Flushing		
Code Number	Description	2018 RRP
WC03-061	WC Flushvalve Kit with in-built overflow and programmable sensor - 2" base C/W 3m cable, 6 x C Cell batteries & Manual override kit	£396.31
WC03-063	WC Flushvalve Kit with in-built overflow & tactile switch - 1½" base C/W 3m cable & 6 x C Cell batteries	£272.21
WC03-070	WC Flushvalve Kit with in-built overflow and wave-on sensor - 1½" base C/W 3m cable & Intelligent battery charger	£444.87
WC03-071	WC Flushvalve Kit with in-built overflow and wave-on sensor - 2" base C/W 3m cable & Intelligent battery charger	£444.87
WC03-072	WC Flushvalve Kit with in-built overflow and programmable sensor - 1½" base C/W 3m cable & Intelligent battery charger	£480.33
WC03-073	WC Flushvalve Kit with in-built overflow and programmable sensor - 2" base C/W 3m cable & Intelligent battery charger	£480.33
<b>Dual Flushing Plate Kit - 1½"</b>		
WC00-097	Full/half flush plate complete with 2 x tactile switches	£162.88
WC01-022	Flushvalve with in-built overflow (valve only) - 1½" base	£145.43
WC00-010	Control box for WC Flushvalves - Mains C/W 1.5m cable	£130.89
<b>Dual Flushing Plate Kit - 2"</b>		
WC00-097	Full/half flush plate complete with 2 x tactile switches	£162.88
WC01-023	Flushvalve with in-built overflow (valve only) - 2" base	£145.43
WC00-010	Control box for WC Flushvalves - Mains C/W 1.5m cable	£130.89
<b>Kit Options</b>		
AC02-001	Standard wave-on sensor included in WC kits (excludes bezel) - C/W 3m cable	£46.54
AC02-002	Standard wave-on sensor included in WC kits (excludes bezel) - C/W 15m cable	£71.26
AC02-003	38mm chrome bezel for wave-on sensor - Normally used with 80mm backplate	£8.73
AC02-005	50mm chrome bezel for wave-on sensor - Normally used on exposed cistern	£8.00
AC02-037	Wall Mounted Brushed s/steel Programmable Sensor (WC) - dual flush	£103.82
WC00-025	80mm chrome back plate with 'Wave-on hand' and DVS logo	£13.09
AC02-009	38mm chrome wave on sensor pack C/W 3m cable	£55.26
AC02-010	38mm chrome wave on sensor pack C/W 15m cable	£79.99
AC02-011	38mm chrome wave on sensor pack C/W DVS backplate & 3m cable	£68.35
AC02-012	38mm chrome wave on sensor pack C/W DVS backplate & 15m cable	£93.07
AC02-013	50mm chrome wave on sensor pack C/W 3m cable	£58.17
AC02-015	50mm chrome wave on sensor pack C/W DVS backplate & 3m cable	£71.26
AC02-040	Anti-vandal wave-on sensor with 50mm s/steel bezel C/W 3m cable & Blue indication insert	£65.44
AC02-043	Anti-vandal wave-on sensor with 50mm s/steel bezel C/W 15m cable & Blue indication insert	£90.17
AC02-050	Tactile switch with 50mmø stainless steel bezel C/W 15m cable & Red indication insert	£90.17
AC02-049	Tactile switch with 50mmø stainless steel bezel C/W 15m cable & Blue indication insert	£90.17
WC00-024	80mmø chrome back plate with 'Wave-on hand'	£13.09

WC Flushing		
Code Number	Description	2018 RRP
WC00-020	80mm chrome back plate - Blank	£13.09
WC00-022	80mm chrome back plate - Full flush with 'DVS logo'	£18.98
WC00-023	80mm chrome back plate - Half flush with 'DVS logo'	£18.98
WC00-021	120mm s/steel disabled back plate (larger plate with larger type and graphics)	£27.37
AC02-006	50mm s/steel bezel for wave-on sensor	£12.16
AC02-060	Sensor thread extension for 70mm wall thickness	£12.16
AC02-056	Sensor thread extension for 100mm wall thickness	£14.54
AC02-057	Sensor thread extension for 150mm wall thickness	£17.45
AC02-058	Sensor thread extension for 250mm wall thickness	£26.18
<b>Individual Parts</b>		
WC00-006	Manual Override Wall Fitting, Plate and Sensor for WC	£88.33
WC01-022	Flushvalve with in-built overflow (valve only) - 1 ½" base	£145.43
WC01-023	Flushvalve with in-built overflow (valve only) - 2" base	£145.43
WC01-032	Manual Override Flushvalve with in-built overflow (valve only) - 1 ½" base	£145.43
WC01-033	Manual Override Flushvalve with in-built overflow (valve only) - 2" base	£145.43
WC01-012	Flushvalve with in-built overflow (base only) - 1 ½" base	£29.09
WC01-013	Flushvalve with in-built overflow (base only) - 2" base	£29.09
WC01-002	Flushvalve replacement body	£81.55
WC00-001	Flushvalve replacement s/steel piston and spring - suitable for all models	£20.36
WC00-003	Flushvalve replacement spring only - suitable for all models	£2.20
WC00-002	Flushvalve replacement s/steel piston and spring for manual override	£20.36
WC00-010	Control box for WC Flushvalves - Mains C/W 1.5m cable	£130.89
WC00-011	Control box for WC Direct Flushing - Mains C/W 1.5m cable	£159.97
WC00-008	Flushvalve control box for WC Flushvalves (V3 Battery) C/W 1.5m cable	£122.19
WC00-012	Flushvalve control box for WC Flushvalves (Low Voltage Mains) C/W 1.5m cable	£154.80
WC00-150	Flushvalve control box for WC Flushvalves (Battery box - without batteries)	£122.19
WC00-155	Enclosure, Intelligent charger & battery pack	£108.90
PP00-488	Yuasa NP4-6 Lead Acid Rechargeable Battery	£12.47
WC00-140	Set of 6 C Cell Batteries for Battery WC Flushvalve control box	£9.87
WC00-133	9v Battery Pack - C-Cell (6 Batteries included) - Replacement for the low voltage control box	£19.04
<b>Cisterns &amp; Accessories</b>		
WC02-011	Concealed plastic cistern kit - 1 ½"	£53.81
WC02-012	Concealed plastic cistern kit - 2"	£59.63
WC02-001	Concealed plastic cistern - Cistern only - 1 ½"	£31.99
WC02-002	Concealed plastic cistern - Cistern only - 2"	£37.81
WC02-013	Concealed tall plastic cistern kit - 1 ½"	£98.89
WC02-014	Concealed tall plastic cistern kit - 2"	£98.89
WC02-003	Concealed tall plastic cistern - Cistern only - 1 ½"	£78.53
WC02-004	Concealed tall plastic cistern - Cistern only - 2"	£78.53
WC02-005	Concealed tall plastic cistern 2" with Float switch hole & modified lid	£88.67
WC02-015	Concealed tall plastic cistern kit 2" with FS hole (Heathrow)	£106.29
WC02-006	Compact Concealed Cistern with modified outlet to suit urinal flush pipework 22mm	£84.40
WC02-007	Compact Concealed plastic cistern - 1 ½" Cistern and Lid only	£31.99
WC02-017	Compact Concealed plastic cistern - 1 ½" Kit	£53.81

WC Flushing		
Code Number	Description	2018 RRP
WC02-033	Side entry valve - individual (standard with cistern kits)	£14.54
WC02-037	Side entry valve - individual (Breeam approved)	£20.36
WC02-031	Standard 38mm flushpipe (430 x 430) - 1 ½" to 1 ½"	£8.73
WC02-032	Standard 50mm to 38mm flushpipe (340 x 500) - 2" to 1 ½"	£14.54
WC02-035	Back to pan connector for flush pipe	£2.18
WC00-004	Toilet tank reduction bag	£3.64
WC00-005	4 piece coupling 1 ¼" kit	£2.53
PP00-100	WC control system fuse - Primary - 20mm Glass 240V (T) 100mA	£0.79

## Urinal Controls

Offering substantial water savings and a short payback period, urinal controls also ensure a clean and fresh washroom.



Urinal Controls		
Code Number	Description	2018 RRP
<b>Flushmatic Urinal Controls</b>		
UC01-001	Flushmatic surface mount kit in Grey - Battery C/W solenoid valve 0.5-8 BAR	£221.05
UC01-003	Flushmatic surface mount kit in Grey - Battery C/W solenoid valve 0.5-8 BAR - Blank	£221.05
UC01-005	Flushmatic surface mount kit in White - Battery C/W solenoid valve 0.5-8 BAR	£221.05
UC01-006	Flushmatic surface mount in White - Battery C/W solenoid valve 0.5-8 BAR - Blank	£221.05
UC01-004	Flushmatic surface mount kit in S/Steel - Battery C/W solenoid valve 0.5-8 BAR	£276.31
UC01-014	Flushmatic surface mount kit in Grey - Mains C/W solenoid valve 0.5-8 BAR	£261.77
UC01-015	Flushmatic surface mount kit in Grey - Mains C/W solenoid valve 0.5-8 BAR - Blank	£261.77
UC01-017	Flushmatic surface mount kit in White - Mains C/W solenoid valve 0.5-8 BAR	£261.77
UC01-016	Flushmatic surface mount kit in S/Steel - Mains C/W solenoid valve 0.5-8 BAR	£317.03
UC01-007	Flushmatic surface mount kit with battery low indicator in Grey - Battery C/W solenoid valve 0.5-8 BAR	£247.23
UC01-009	Flushmatic surface mount kit with battery low indicator in White - Battery C/W solenoid valve 0.5-8 BAR	£247.23
UC01-008	Flushmatic surface mount kit with battery low indicator in S/Steel - Battery C/W solenoid valve 0.5-8 BAR	£302.49
UC01-018	Flushmatic downlighter kit for suspended ceilings in White - Battery C/W solenoid valve 0.5-8 BAR	£251.59
UC01-024	Flushmatic downlighter kit for suspended ceilings in White - Mains C/W solenoid valve 0.5-8 BAR	£247.38
UC01-019	Pearl downlighter kit for suspended ceilings in White - Battery C/W solenoid valve 0.5-8 BAR	£221.05
UC01-025	Pearl downlighter kit for suspended ceilings in White - Mains C/W solenoid valve 0.5-8 BAR	£230.38
UC01-027	Pearl Solo downlighter kit for suspended ceilings in White - Mains C/W solenoid valve 0.5-8 BAR	£305.40
<b>Individual Urinal Control System</b>		
UC07-010	Urinal control system - 1 station kit - sensor C/W 3m cable & 50mm bezel	£283.59
UC07-011	Urinal control system - 2 station kit - sensors C/W 3m cable & 50mm bezels	£392.66
UC07-001	Urinal control system for 1 or 2 urinals (control box only)	£174.51
AC17-009	12V DC Plastic valve - 12.7mm orifice - 0.2-8 BAR - 15mm Normally closed	£37.81
PP00-100	Urinal control system fuse - Primary - 20mm Glass 240V (T)100mA	£0.79
PP00-101	Urinal control system fuse - Secondary - TR5 (F)500mA	£2.91
UC07-008	Urinal sensor pack 50mm brushed s/steel bezel C/W 3m cable	£82.89
UC07-009	Urinal sensor pack 50mm chrome brass bezel C/W 3m cable	£79.26
UC00-027	Infrared urinal sensor (price excludes bezel) C/W 3m cable	£71.26
UC00-028	50mm chrome bezel for urinal control system sensor	£14.12
UC00-029	50mm stainless steel bezel for urinal control system sensor (standard) Brushed	£11.63
AC02-056	Sensor thread extension for 100mm wall thickness	£14.54



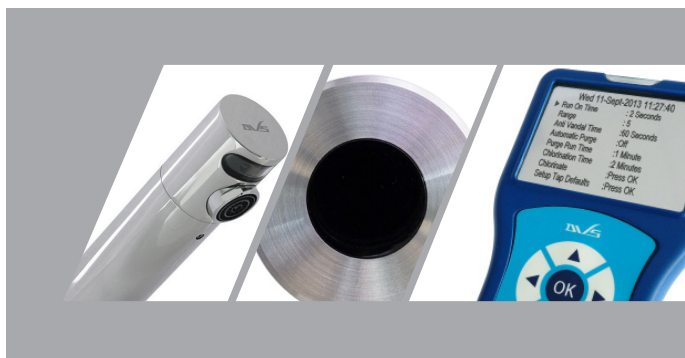
# URINAL CONTROLS

Urinal Controls		
Code Number	Description	2018 RRP
AC02-057	Sensor thread extension for 150mm wall thickness	£17.45
AC02-058	Sensor thread extension for 250mm wall thickness	£26.18
<b>Individual Urinal Control System - Low Pressure Kit</b>		
UC07-001	Urinal control system for 1 or 2 urinals (control box only)	£174.51
UC07-008	Urinal sensor pack 50mm brushed bezel C/W 3m cable	£82.89
AC17-008	12V DC ASCO valve (SCXH262C90BW) 7.1mm orifice - 3W - 0-0.7 BAR - 15mm Brass Normally closed	£53.81
<b>Programmable Sensor Package</b>		
AC02-023	Wall Mounted Brushed s/steel Programmable Sensor (Urinal)	£103.82
AT00-002	Single station mains kit standard pressure - 1-6 BAR brass valve	£117.26
AC01-001	Hand held programmer with case - For use with all DVS programmable sensors & taps	£207.64
<b>Urinal Sleeves and Cleaners</b>		
UC00-007	BioUrinal Sleeve installation kit - Biological - 1 ¼" BSP	£14.59
UC00-008	BioUrinal Sleeve installation kit - Biological - 1 ½" BSP	£14.67
UC00-017	BioUrinal Sleeve refill - Biological	£7.62
UC00-009	ChemiUrinal Sleeve installation kit - Chemical - 1 ¼" BSP	£15.36
UC00-010	ChemiUrinal Sleeve installation kit - Chemical - 1 ½" BSP	£15.40
UC00-013	ChemiUrinal Sleeve refill - Chemical	£8.39
UC00-011	Bio/Chemi Urinal Fitting - 1 ¼" BSP	£4.77
UC00-012	Bio/Chemi Urinal Fitting - 1 ½" BSP	£4.81
UC01-010	Timed urinal control system Battery C/W solenoid valve	£152.70
UC01-011	Timed urinal control system Mains C/W solenoid valve	£193.42
UC01-012	Timed urinal control system Mains C/W solenoid valve - PIC change (Swimming pools)	£152.70
UC01-013	Timed urinal control system Mains C/W solenoid valve - Weekly flush	£152.70
<b>Accessories</b>		
UC00-006	Battery pack for Flushmatic urinal controls (with tails) - 6V	£20.36
AT00-026	Battery pack for Pearl and overseas Flushmatic urinal controls (without tails) - 6V	£8.35
UC00-016	Power supply for Pearl and Flushmatic urinal controls - 6V	£46.54
UC00-021	Flushmatic printed circuit board	£138.16
AC17-002	6V DC ASCO valve (H262602BW) 2mm orifice - 0-12 BAR - 15mm Brass latching	£53.81
AC17-027	Valve latch used for manually opening/closing ASCO latching valves	£79.32
UC00-001	Air break (back flow preventer) 15mm/22mm - Prevents backflow to water supply	£47.59
UC00-003	Auto-Syphon for urinal cisterns - 5 ½" x 1" BSP	£18.91
UC00-004	Auto-Syphon for urinal cisterns - 5 ½" x 1 ¼" BSP	£18.91
UC00-002	Auto-Syphon for urinal cisterns - 8" x 1 ½" BSP	£32.15
UC00-014	10mm conversion kit - for connecting Vitra S-Line urinal bowl	£26.18
UC00-024	Replacement fuse for Flushmatic - TR5 (T)1.6A	£2.91
UC00-023	Replacement fuse for Pearl - TR5 (T)1.25A	£2.91
UC01-021	Pearl Downlighter only	£157.06
UC00-019	Replacement box for Flushmatic surface mount in Grey	£16.64
UC00-018	Replacement box for Flushmatic surface mount in White	£21.48

# AUTOMATIC TAPS

## Automatic Taps

No-touch automatic taps and accessories from DVS, incorporate state-of-the-art technology, water efficiency and reliability. Suitable for various applications across commercial, public and domestic sectors.



Automatic Taps - Tap spouts require separate mains/battery 1, 2 or 3 station kit		
Code Number	Description	2018 RRP
<b>Tap Spouts</b>		
AT01-001	Classic tap spout only in chrome with PEX tails	£258.86
AT01-002	Classic tap spout only in chrome with copper tails	£286.49
AT01-003	Classic tap spout only in chrome with s/steel tails	£295.22
AT01-011	Classic Swan tap spout only in chrome with PEX tails	£258.86
AT01-012	Classic Swan tap spout only in chrome with copper tails	£286.49
AT01-013	Classic Swan tap spout only in chrome with s/steel tails	£295.22
AT02-001	Aquarius WM straight tap spout only in s/steel 150mm with PEX tails	£210.87
AT02-002	Aquarius WM straight tap spout only in s/steel 150mm with copper tails	£238.50
AT02-003	Aquarius WM straight tap spout only in s/steel 150mm with s/steel tails	£247.23
AT02-005	Aquarius WM straight tap spout only in polished s/steel 150mm with PEX tails	£225.41
AT02-006	Aquarius WM straight tap spout only in polished s/steel 150mm with copper tails	£253.04
AT02-004	Aquarius WM straight tap spout only in s/steel 150mm with PEX tails (for use with AT00-039 PALL filter, spout includes AT00-040 adaptor)	£286.49
AT02-014	Aquarius WM straight tap spout only in s/steel 200mm with PEX tails (for use with AT00-039 PALL filter, spout includes AT00-040 adaptor)	£286.49
AT02-024	Aquarius WM straight tap spout only in s/steel 250mm with PEX tails (for use with AT00-039 PALL filter, spout includes AT00-040 adaptor)	£301.04
AT00-039	PALL filter for use with Aquarius WM filter tap	£100.73
AT02-052	Aquarius WM Straight tap spout only in s/steel 150mm Surgeons Scrub pex tails	£210.87
AT02-053	Aquarius WM Straight tap spout only in s/steel 200mm Surgeons Scrub pex tails	£210.87
AT02-054	Aquarius WM Straight tap spout only in s/steel 250mm Surgeons Scrub pex tails	£225.41
AT02-011	Aquarius WM straight tap spout only in s/steel 200mm with PEX tails	£210.87
AT02-012	Aquarius WM straight tap spout only in s/steel 200mm with copper tails	£238.50
AT02-013	Aquarius WM straight tap spout only in s/steel 200mm with s/steel tails	£247.23
AT02-015	Aquarius WM straight tap spout only in polished s/steel 200mm with PEX tails	£225.41
AT02-016	Aquarius WM straight tap spout only in polished s/steel 200mm with copper tails	£253.04
AT02-021	Aquarius WM straight tap spout only in s/steel 250mm with PEX tails	£225.41
AT02-022	Aquarius WM straight tap spout only in s/steel 250mm with copper tails	£253.05
AT02-023	Aquarius WM straight tap spout only in s/steel 250mm with s/steel tails	£261.77
AT02-025	Aquarius WM straight tap spout only in polished s/steel 250mm with PEX tails	£239.96
AT02-026	Aquarius WM straight tap spout only in polished s/steel 250mm with copper tails	£267.57

<b>Automatic Taps</b> - Tap spouts require separate mains/battery 1, 2 or 3 station kit		
Code Number	Description	2018 RRP
AT03-001	Aquarius DM A32 tap spout only in s/steel with PEX tails	£210.87
AT03-002	Aquarius DM A32 tap spout only in s/steel with copper tails	£238.50
AT03-003	Aquarius DM A32 tap spout only in polish s/steel with PEX tails	£225.41
AT03-004	Aquarius DM A32 tap spout only in polish s/steel with copper tails	£253.04
AT03-011	Aquarius DM A45 tap spout only in s/steel with PEX tails	£210.87
AT03-012	Aquarius DM A45 tap spout only in s/steel with copper tails	£238.50
AT03-013	Aquarius DM A45 tap spout only in polish s/steel with PEX tails	£225.41
AT03-014	Aquarius DM A45 tap spout only in polish s/steel with copper tails	£253.04
AT03-021	Aquarius DM A45 Doc M tap spout only in s/steel with PEX tails	£210.87
AT03-022	Aquarius DM A45 Doc M tap spout only in s/steel with copper tails	£238.50
AT03-023	Aquarius DM A45 Doc M tap spout only in polish s/steel with PEX tails	£225.41
AT03-024	Aquarius DM A45 Doc M tap spout only in polish s/steel with copper tails	£253.04
AT03-031	Aquarius DM Short neck tap spout only in s/steel with PEX tails	£258.86
AT03-032	Aquarius DM Short neck tap spout only in s/steel with copper tails	£286.49
AT03-033	Aquarius DM Short neck tap spout only in polish s/steel with PEX tails	£273.41
AT03-034	Aquarius DM short neck tap spout only in polish s/steel with copper tails	£301.03
AT03-041	Aquarius DM high neck tap spout only in s/steel with PEX tails	£258.86
AT03-043	Aquarius DM high neck tap spout only in polish s/steel with PEX tails	£273.41
AT03-051	Aquarius DM short pillar tap in chrome spout only with PEX tails	£363.57
AT03-061	Aquarius DM tall pillar tap in chrome spout only with PEX tails	£363.57
<b>Tap kits for use with above spouts</b>		
AT00-001	Single station battery kit standard pressure - 1-6 BAR brass valve	£117.26
AT00-002	Single station mains kit standard pressure - 1-6 BAR brass valve	£117.26
AT00-003	Two station mains kit standard pressure - 1 - 6 BAR brass valve	£221.78
AT00-004	Three station mains kit standard pressure - 1-6 BAR brass valve	£338.63
AT00-005	Single station battery kit low pressure - 0.5-1 BAR brass valve	£117.26
AT00-006	Single station mains kit low pressure - 0.5-1 BAR brass valve	£117.26
AT00-007	Two station mains kit low pressure - 0.5-1 BAR brass valve	£221.78
AT00-008	Three station mains kit low pressure- 0.5-1 BAR brass valve	£338.63
<b>Tap kits - Anti-Microbial</b>		
AT00-220	Single Station Kit - Anti Microbial - Battery	£96.73
AT00-221	Single Station Kit - Anti Microbial - Mains	£98.07
AT00-222	Two Station Kit - Anti Microbial - Mains	£174.77
AT00-223	Three Station Kit - Anti Microbial - Mains	£263.79
AC17-047	Thermostatic mixing valve 4 in 1 - 15/22mm	£95.98
AC01-001	Hand held programmer with case - For use with all DVS programmable sensors & taps	£207.64

<b>Automatic Taps</b> - Tap spouts require separate mains/battery 1, 2 or 3 station kit		
Code Number	Description	2018 RRP
<b>AquariTherm™ Tap</b>		
MT04-001	AquariTherm™ Tap - Manual	£446.80
AT04-001	AquariTherm™ Tap - Automatic C/W Std Mains Kit for 1-6 bar	£751.78
AC06-001	AquariTherm™ Service kit - Thermostatic Cartridge	£53.99
AC06-002	AquariTherm™ Service kit - Check Valves, Filter Cartridges & Outlet	£13.62
AT04-011	AquariTherm Standard Mains Kit for 1-6 bar for use with automatic spout only	£236.80
<b>Tap Spouts (no electronics)</b>		
AT07-047	Aquarius WM tap spout only in brushed s/steel with no electronics - 140mm	£69.70
AT07-048	Aquarius WM tap spout only in brushed s/steel with no electronics - 190mm	£130.89
AT07-049	Aquarius WM tap spout only in brushed s/steel with no electronics - 240mm	£72.45
AT07-050	Classic tap spout - no electronics	£180.11
AT07-051	Aquarius A45 DOC.M tap spout only in brushed s/steel with no electronics	£129.43
AT07-052	Aquarius A45 DM tap spout only in brushed s/steel with no electronics	£129.43
AT07-053	Aquarius Short Neck tap spout only in brushed s/steel with no Electronics	£152.70
AT07-073	Aquarius High Neck tap spout only in brushed s/steel with no Electronics	£152.70
<b>High Security Spouts (no electronics)</b>		
AT07-040	High Security WM tap spout only in brushed s/steel 45° (113mm long from top) C/W 5LPM aerator	£95.98
AT07-041	High Security WM tap spout only in brushed s/steel 30° (98mm long from top)	£69.94
AT07-042	High Security WM tap spout only in brushed s/steel 30° - 80mm BSP	£66.90
AT07-043	High security WM tap spout only in brushed s/steel 45° (113mm long from top) 200mm BSP	£101.80
AT07-044	High security WM tap spout only in brushed s/steel 30° (98mm long from top) 200mm BSP	£76.02
AT07-045	High security WM tap spout only in brushed s/steel 30° - 200mm BSP	£72.71
AT07-056	Anti-ligature basin spout only in brushed s/steel (AC17-042 must be fitted after the solenoid valve)	£87.26
AC17-042	Restrictaflow In-Line Flow Restricting Valve - 15mm DVS - 2 LPM	£12.46
AT07-057	Anti-ligature basin spout only in polished s/steel (AC17-042 must be fitted after the solenoid valve)	£87.26
AT07-058	45mm Anti-vandal tap spout only in brushed s/steel C/W 2 LPM and double check valve	£87.26
AT07-059	55mm Anti-vandal bath spout only in brushed s/steel	£127.58
AT07-092	Angled deck mounted basin spout (AC17-042 recommended to be fitted after solenoid valve)	£90.41
<b>EZ Tap spouts (316 Stainless Steel)</b>		
AT07-101	EZ-Spout™ Healthcare 90° Tap Spout (includes Spigot)	£104.18
AT07-102	EZ-Spout™ 90° Tap Spout (includes Spigot) fitted with 5 LPM aerator	£93.36
AT07-103	EZ-Spout™ 60° Tap Spout (includes Spigot) fitted with 5 LPM aerator	£93.36
AT07-104	EZ-Spout™ Healthcare 60° Tap Spout (includes Spigot)	£95.98
<b>Individual Parts (316 Stainless Steel)</b>		
AT07-115	EZ-Spout™ Spigot only	£50.57
AT07-116	EZ-Spout™ Healthcare 90° Tap Spout only	£61.09
AT07-117	EZ-Spout™ 90° Tap Spout only	£45.81

<b>Automatic Taps</b> - Tap spouts require separate mains/battery 1, 2 or 3 station kit		
Code Number	Description	2018 RRP
AT07-118	EZ-Spout™ 60° Tap Spout only	£45.81
AT07-119	EZ-Spout™ Healthcare 60° Tap Spout only	£52.89
<b>Filter for use with AT07-102, can not be used with any other EZ Spouts</b>		
AT00-044	Adaptor for PALL filter - for use with EZ-Spout™	£49.44
AT00-039	PALL filter - for use with EZ-Spout™	£100.73
<b>Medi-Spouts (ABS with anti-microbial material)</b>		
AT07-105	Medi-Spout™ 90° Tap in Chrome (includes Spigot)	£21.97
AT07-106	Medi-Spout™ 60° Tap in Chrome (includes Spigot)	£21.97
AT07-107	Medi-Spout™ 90° Tap in Satin Chrome (includes Spigot)	£21.97
AT07-108	Medi-Spout™ 60° Tap in Satin Chrome (includes Spigot)	£21.97
<b>Individual Parts (ABS with anti-microbial material)</b>		
AT07-130	Medi-Spout™ 90° in Chrome Tap Spout only	£10.07
AT07-131	Medi-Spout™ 60° in Chrome Tap Spout only	£10.07
AT07-132	Medi-Spout™ 60° in Satin Chrome Tap Spout only	£10.07
AT07-133	Medi-Spout™ 90° in Satin Tap Spout only	£10.07
AT07-129	Wall Spigot assembly - Includes o-rings & fasteners	£12.20
<b>Programmable Sensor (Requires mains or battery single / two station kit)</b>		
AC01-001	Hand held programmer with case - For use with all DVS programmable sensors & taps	£207.64
AC02-017	Wall mounted brushed s/steel programmable tap sensor	£103.82
AC02-024	Wall mounted brushed s/steel programmable tap sensor - Blue insert (Cold)	£103.82
AC02-025	Wall mounted brushed s/steel programmable tap sensor - Red insert (Hot)	£103.82
AC02-056	Sensor thread extension for 100mm wall thickness	£14.54
AC02-057	Sensor thread extension for 150mm wall thickness	£17.45
AC02-058	Sensor thread extension for 250mm wall thickness	£26.18
<b>Kits for use with Programmable Sensors</b>		
AT00-001	Single station battery kit standard pressure - 1-6 BAR brass valve	£117.26
AT00-002	Single station mains kit standard pressure - 1-6 BAR brass valve	£117.26
AT00-003	Two station mains kit standard pressure - 1 - 6 BAR brass valve	£221.78
AT00-005	Single station battery kit low pressure - 0.5 - 1 BAR brass valve	£117.26
AT00-006	Single station mains kit low pressure - 0.5 - 1 BAR brass valve	£117.26
AT00-007	Two station mains kit low pressure - 0.5 - 1 BAR brass valve	£221.78
AC17-047	Thermostatic mixing valve 4 in 1 - 15/22mm	£95.98
<b>Tap 2-Channel Control System Kit - Mains</b>		
AT07-010	Tap control system - 1 station kit - Wave-on sensor with 50mm bezel	£267.59
AT07-011	Tap control system - 2 station kit - Wave-on sensors with 50mm bezels	£360.66
AT07-012	Tap control system - 1 station kit - Tactile switch with 50mm bezel	£277.77
AT07-013	Tap control system - 2 station kit - Tactile switches with 50mm bezels	£381.02
AT07-015	Tap control system - Wave-on sensor kit for use with DVS high security backplates	£381.02
AT07-014	Tap control system - Tactile switch kit for use with DVS high security backplates	£381.02

<b>Automatic Taps</b> - Tap spouts require separate mains/battery 1, 2 or 3 station kit		
Code Number	Description	2018 RRP
<b>Tap Control System Kit - Battery</b>		
AT07-002	Tap control system for 1 or 2 taps (control box only) C/W 6 x AA Batteries	£159.97
AT07-003	Tap control system for 1 or 2 taps (control box only) C/W 6 x C Cell Batteries	£159.97
AC17-006	6V DC ASCO valve (SCXH210G202BW) 12.7mm orifice - 0.35-10 BAR - 15mm Brass latching	£62.53
AC17-005	6V DC ASCO valve (H262605BW) 6.7mm orifice - 0-0.7 BAR - 15mm Brass latching	£53.81
<b>Individual Parts</b>		
AT07-001	Tap control system for 1 or 2 taps (control box only)	£174.51
AC17-009	12V DC Plastic valve - 12.7mm orifice - 0.2-8 BAR - 15mm Normally closed	£37.81
PP00-100	Tap control system fuse - Primary - 20mm Glass 240V (T) 100mA	£0.79
PP00-101	Tap control system fuse - Secondary - TR5 (F)500mA	£2.91
AC02-001	Wave-on sensor (price excludes bezel) - C/W 3m cable	£46.54
AC02-008	Optional Red (Hot) indication washer for behind AC02-001 wave-on sensor bezel	£2.91
AC02-007	Optional Blue (Cold) indication washer for behind AC02-001 wave-on sensor bezel	£2.91
AC02-005	50mm chrome bezel for AC02-001 wave-on sensor	£8.00
AC02-006	50mm s/steel bezel for AC02-001 wave-on sensor	£12.16
AC02-041	Anti-vandal wave-on sensor with 50mm s/steel bezel c/w 3m cable & Red indication insert	£65.44
AC02-040	Anti-vandal wave-on sensor with 50mm s/steel bezel c/w 3m cable & Blue indication insert	£65.44
AC02-047	Tactile switch with 50mm s/steel bezel C/W 3m cable & Red indication insert	£65.44
AC02-046	Tactile switch with 50mm s/steel bezel C/W 3m cable & Blue indication insert	£65.44
AC02-056	Sensor thread extension for 100mm wall thickness	£14.54
AC02-057	Sensor thread extension for 150mm wall thickness	£17.45
AC02-058	Sensor thread extension for 250mm wall thickness	£26.18
AT00-031	Battery backup unit	£130.89
<b>Accessories</b>		
AT00-023	Touch free self-adhesive polythene label	£2.18
AT00-012	Flow straightener 6 LPM - Black back	£4.36
AT00-013	Flow straightener 5 LPM (Standard with all DVS taps) - Orange back	£4.36
AT00-010	Flow straightener 3.5 LPM - Blue back	£4.36
AT00-011	Flow straightener - Unrestricted	£4.36
AT00-015	Flow straightener 4 LPM - Pink back	£5.24
AT00-014	Flow straightener 3 LPM - Purple back	£5.24
AT00-133	Flow straightener - Unrestricted - DVS (Hospital spec)	£3.11
AT00-016	PEX hose - Standard length 500mm	£13.09
AT00-018	PEX hose - Long length 1m	£16.00
AT00-019	PEX hose - 15mm x 15mm extension hose	£14.54
AT00-029	Single Earthed PSU for Automatic Taps	£46.54
AC17-006	6V DC ASCO valve (SCXH210G202BW) 12.7mm orifice - 0.35-10 BAR - 15mm Brass latching	£62.53
AC17-004	6V DC ASCO valve (H262604BW) 4mm orifice - 0-2 BAR - 15mm Brass latching	£53.81
AT00-024	Automatic tap battery pack with box and lead	£46.54
AT00-025	Automatic tap double battery pack with box and lead for extended life	£66.90
AT00-026	Replacement single battery	£8.35
AT00-037	Y splitter lead (for connecting to valve & power supply)	£42.17



Automatic Taps - Tap spouts require separate mains/battery 1, 2 or 3 station kit		
Code Number	Description	2018 RRP
AT00-036	T-piece for multiple installations	£34.90
AT00-033	Cable extension (1 metre)	£18.91
AT00-034	Cable extension (2 metre)	£20.36
AT00-035	Cable extension (3 metre)	£23.27
PP00-001	Anti-rotation locking washers for taps	£3.63
AT00-027	S/steel blanking plate (tap hole cover)	£7.99
AT00-028	Chrome plastic blanking plate (tap hole cover)	£4.36
AT00-038	Conversion kit for flexibles to copper tails - wall mounted only C/W 350mm length. Exposed length of copper tail will vary according to tap model	£27.63
AT00-124	Conversion kit for flexibles to s/steel tails - wall mounted only C/W 350mm length. Exposed length of tail will vary according to tap model	£36.36
AT00-040	Replacement adaptor for PALL filters	£41.25

# PUSH TAPS

## Push Taps

A popular choice for high traffic areas, push taps offer great value for money and robust performance.

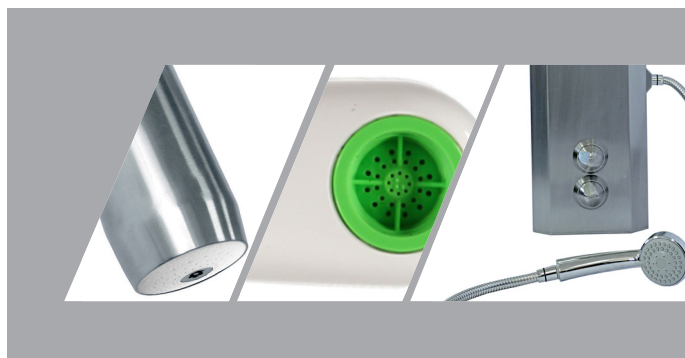


Push Taps		
Code Number	Description	2018 RRP
<b>Push Taps</b>		
MT00-002	QK Push tap - Hot	£48.17
MT00-001	QK Push tap - Cold	£48.17
MT00-007	QL Lever clinic tap - Angled	£75.26
MT00-004	QK WM push tap - Hot	£60.21
MT00-003	QK WM push tap - Cold	£60.21
MT00-006	QK Extended WM push tap - Hot	£75.26
MT00-005	QK Extended WM push tap - Cold	£75.26
AC02-066	Thread extension for WM push taps - 100mm wall thickness	£17.45
AC02-067	Thread extension for WM push taps - 150mm wall thickness	£21.81
AC02-068	Thread extension for WM push taps - 250mm wall thickness	£30.41
<b>Accessories</b>		
MT00-019	Replacement cartridge for MT00-001/002 taps	£30.10
MT00-021	Replacement cartridge for MT00-007 QL tap	£48.17
PP00-001	Anti-rotation locking washers for taps	£3.63
PP00-110	Flanged cast brass nut - ½" BSP	£1.16
PP00-111	Flanged cast brass nut - ¾" BSP	£1.45
AT00-027	S/steel blanking plate (tap hole cover)	£8.71
AT00-028	Chrome plastic blanking plate (tap hole cover)	£4.36



## Showers & Bath Filling

A selection of sensors, control systems, shower heads and spouts for hygienic and water efficient showering and bath filling.



Showers & Bath Filling		
Code Number	Description	2018 RRP
<b>Shower Towers - Non-electronic</b>		
SH01-001	Standard tower with High Security showerhead - Push (Auto Close)	£578.80
SH01-013	Standard tower with High Security showerhead - Dual Outlet C/W hose & handset (Note: Fitted with TMV2 shower valve)	£882.94
SH01-008	Ceiling height tower with High Security showerhead - Push (Auto Close)	£767.86
SH01-004	Ceiling height TMV3 tower with High Security showerhead - Push (Auto Close)	£865.30
<b>Shower Towers - Mains</b>		
SH01-002	Standard tower with High Security showerhead - Wave-on - Mains	£727.14
SH01-060	Standard tower with High Security showerhead - Programmable Sensor - Mains	£727.14
SH01-003	Standard tower with High Security showerhead - Tactile - Mains	£767.86
SH01-009	Ceiling height tower with High Security showerhead - Wave-on - Mains	£911.84
SH01-062	Ceiling height tower with High Security showerhead - Programmable Sensor - Mains	£911.84
SH01-010	Ceiling height tower with High Security showerhead - Tactile - Mains	£911.84
SH01-006	Ceiling height TMV3 tower with High Security showerhead - Wave-on - Mains	£1007.82
SH01-061	Ceiling height TMV3 tower with High Security showerhead - Programmable Sensor - Mains	£1007.82
SH01-005	Ceiling height TMV3 tower with High Security showerhead - Tactile - Mains	£1007.82
SH01-011	Ceiling height TMV3 tower with shower kit consisting rail, hose and head - Mains	£1132.31
<b>Shower Towers - Battery</b>		
SH01-063	Standard tower with High Security showerhead - Wave-on - Battery	£727.14
SH01-064	Standard tower with High Security showerhead - Programmable Sensor - Battery	£727.14
SH01-065	Standard tower with High Security showerhead - Tactile - Battery	£767.86
SH01-066	Ceiling height tower with High Security showerhead - Wave-on - Battery	£911.84
SH01-067	Ceiling height tower with High Security showerhead - Programmable Sensor - Battery	£911.84
SH01-068	Ceiling height tower with High Security showerhead - Tactile - Battery	£911.84
SH01-069	Ceiling height TMV3 tower with High Security showerhead - Wave-on - Battery	£1007.82
SH01-070	Ceiling height TMV3 tower with High Security showerhead - Programmable Sensor - Battery	£1007.82
SH01-071	Ceiling height TMV3 tower with High Security showerhead - Tactile - Battery	£1007.82
SH01-072	Ceiling height TMV3 tower with shower kit consisting rail, hose and head - Battery	£1132.31
<b>Programmable Sensor Package</b>		
SH07-040	High security showerhead - 30° (80mm long from top)	£62.53
AC02-033	Wall Mounted Brushed Stainless Steel Programmable Sensor (Shower) - Red insert	£103.82
AC17-047	Thermostatic mixing valve 4 in 1 - 15/22mm	£95.98
AT00-002	Single station mains kit standard pressure - 1-6 BAR brass valve	£117.26
AC01-001	Hand held programmer C/W case - For use with all DVS programmable sensors & taps	£207.64

Showers & Bath Filling		
Product Code	Description	2018 RRP
<b>Showerheads &amp; Fixing Plates</b>		
SH07-040	High security showerhead - 30° (80mm long from top)	£62.53
SH07-066	High security showerhead - 30° (80mm long from top) C/W 200mm BSP	£79.99
SH07-042	High security showerhead - Ceiling mounted	£77.08
SH07-046	High security showerhead - Ceiling mounted V2	£77.08
SH07-084	Shower Head with Detachable Hose Connection - Includes Hose & Head	£197.22
SH00-024	Replacement loose white rings for the above showerheads	£4.36
SH00-060	Shower insert set - Anti-microbial	£3.63
SH00-020	Showerhead flow reducer insert - Reduces to 8 LPM	£6.47
SH07-052	Backplate for securing SH07-042 ceiling mounted showerhead	£9.44
SH07-041	Oval fixing plate suitable for SH07-040, shower sensor & blending valve adjuster	£36.36
SH00-019	Showerhead with rail & handset	£145.43
SH07-085	WM High Security ABS Dome Showerhead in Chrome finish - Anti-microbial material	£35.97
SH07-086	WM High Security ABS Sloped Showerhead in Chrome finish - Anti-microbial material	£35.97
SH07-090	WM High Security ABS Dome Showerhead in White finish - Anti-microbial material	£35.97
SH07-091	WM High Security ABS Sloped Showerhead in White finish - Anti-microbial material	£35.97
<b>Medi-Shower™ Individual Parts</b>		
SH07-074	Medi-Shower™ Hose	£36.30
SH07-075	Medi-Shower™ Shower head	£42.35
SH07-076	Medi-Shower™ Insert	£4.35
SH07-077	Medi-Shower™ Key - Red	£4.79
SH07-079	Medi-Shower™ Set of 4 Inserts (Years Plan)	£17.38
SH07-089	Medi-Shower™ Key - Green	£4.79
MS00-001	Medi-Shower™ sloped head (includes 4 inserts)	£37.24
MS00-002	Medi-Shower™ domed head (includes 4 inserts)	£37.24
<b>Medi-Shower™ &amp; Hose</b>		
SH07-073	Medi-Shower™ & Hose kit	£72.60
<b>Medi-Shower™ Control Kits</b>		
SH07-081	Medi-Shower™ control 1 year plan - Medi-showers & hose - 4 colour coded inserts per unit - 1 colour coded wall chart per unit - Optional free post return for disposal of inserts - Warranty 1 year	£81.40
SH07-080	Medi-Shower™ control 3 year plan - Medi-showers & hose - 12 colour coded inserts per unit - 1 colour coded wall chart per unit - Optional free post return for disposal of inserts - Warranty 3 years	£100.10
SH07-082	Medi-Shower™ control 5 year plan - Medi-showers & hose - 20 colour coded inserts per unit - 1 colour coded wall chart per unit - Optional free post return for disposal of inserts - Warranty 5 years	£118.80

Showers & Bath Filling		
Product Code	Description	2018 RRP
<b>Shower Push Taps</b>		
MT00-010	QL WM shower push tap (Auto Close) - Top inlet	£48.17
MT00-011	QL WM shower push tap (Auto Close) - Back inlet	£48.17
MT00-023	WM concealed push tap for showers	£68.96
MT00-020	Replacement cartridge for shower push taps (20 - 25 secs)	£30.10
<b>Temperature Blending Valve</b>		
SH00-011	Temperature blending valve adjuster - for 1.5mm to 22mm wall thickness	£159.97
SH00-012	Temperature blending valve adjuster - for 180mm wall thickness	£189.06
SH00-013	Temperature blending valve adjuster - for 280mm wall thickness	£203.60
AC17-047	Thermostatic mixing valve 4 in 1 - 15/22mm	£95.98
<b>Bath Filling</b>		
VR01-024	High-security bath filling backplate (not including sensors)	£254.15
SH07-043	High Security WM bath spout 45° (113mm long from top) C/W unrestricted aerator AT00-011	£94.53
SH07-054	Bath filling plate with full/half fill indication - Plate only. 2 x tactile switches required	£85.80
SH07-055	Bath filling plate with warm/cold indication - Plate only. 2 x tactile switches required	£85.80
<b>Control Systems</b>		
SH07-010	Shower control system - 1 station kit - Wave-on sensor C/W 8m cable	£306.85
SH07-011	Shower control system - 2 station kit - Wave-on sensors C/W 8m cable	£439.19
SH07-012	Shower control system - 1 station kit - Tactile switch with 50mm bezel C/W 8m cable	£286.49
SH07-013	Shower control system - 2 station kit - Tactile switches with 50mm bezels C/W 8m cable	£398.47
SH07-001	Shower control system for 1 or 2 showers (control box only)	£174.51
SH07-020	Bath control system - For use with bath filling plates & bath spouts (control box only)	£174.51
AC17-009	12V DC Plastic valve - 12.7mm orifice - 0.2-8 BAR - 15mm Normally closed	£37.81
PP00-100	Shower/Bath control system fuse - Primary - 20mm Glass 240V (T) 100mA	£0.79
PP00-101	Shower/Bath control system fuse - Secondary - TR5 (F) 500mA	£2.91
SH00-001	Wave-on shower sensor with 50mm s/steel bezel C/W 8m cable	£84.35
AC02-083	Tactile switch with 50mm s/steel bezel C/W 8m cable & Red indication insert	£78.35
SH00-002	Wave-on shower sensor with 50mm s/steel bezel C/W 15m cable	£109.07
AC02-056	Sensor thread extension for 100mm wall thickness	£14.54
AC02-057	Sensor thread extension for 150mm wall thickness	£17.45
AC02-058	Sensor thread extension for 250mm wall thickness	£26.18
SH07-002	Shower control system for 1 or 2 showers (control box only) C/W 6 x AA Batteries	£159.97
SH07-003	Shower control system for 1 or 2 showers (control box only) C/W 6 x C Cell Batteries	£159.97
SH07-021	Bath control system for 1 or 2 baths (control box only) C/W 6 x AA Batteries	£159.97
SH07-022	Bath control system for 1 or 2 baths (control box only) C/W 6 x C Cell Batteries	£159.97
VR00-002	Wave-on sensor for backplates with Red insert (Hot) C/W 3m cable	£65.44
VR00-001	Wave-on sensor for backplates with Blue insert (Cold) C/W 3m cable	£65.44
SH07-053	Shower push control plate - Plate only. 1 x tactile switch required	£71.26
AC02-052	Tactile switch with 38mm bezel for use with control plates - Individual C/W 3m cable	£62.53

## Water Management

DVS offer a range of water management products to help save water, money and timely maintenance visits.



Water Management		
Product Code	Description	2018 RRP
<b>Overflow Detection Control System</b>		
AC07-001	Overflow detection control system - control box only (for up to 20 cisterns)	£200.25
AC07-002	Float switch - individual	£36.34
AC07-004	Overflow detection control system - s/steel overflow warning light panel - Single	£46.73
PP00-103	Replacement fuse for Overflow detection control system - 20mm Glass (T)50mA	£0.73
<b>Restrictaflow Valve</b>		
AC17-039	Restrictaflow in-line flow restricting valve - 15mm	£8.17
<b>Water Isolation Kit</b>		
AC04-002	Water isolation system kit with 1 x 15mm latching valve - Battery	£255.14
AC04-008	Water isolation system kit with 1 x 15mm latching valve - Mains	£296.67
AC04-003	Water isolation system kit with 2 x 15mm latching valves - Battery	£317.44
AC04-009	Water isolation system kit with 2 x 15mm latching valves - Mains	£356.01
AC04-004	Water isolation system kit with 1 x ¾" BSP latching valve - Battery	£333.76
AC04-010	Water isolation system kit with 1 x ¾" BSP latching valve - Mains	£375.29
AC04-005	Water isolation system kit with 2 x ¾" BSP latching valve - Battery	£407.93
AC04-011	Water isolation system kit with 2 x ¾" BSP latching valve - Mains	£450.25
<b>Individual parts</b>		
AC04-001	Water isolation control box only - Battery	£182.95
AC04-007	Water isolation control box only - Mains	£169.34
AC17-013	Plastic Solenoid Valve (12V) 22mm for water isolation kit	£61.78
AC04-026	Remote Sensor for isolation unit - Downlighter	£99.52
AC04-015	Remote Sensor for isolation unit - Grey Surface Mount	£98.13

# SCRUB-UP TROUGHS

## Scrub-Up Troughs

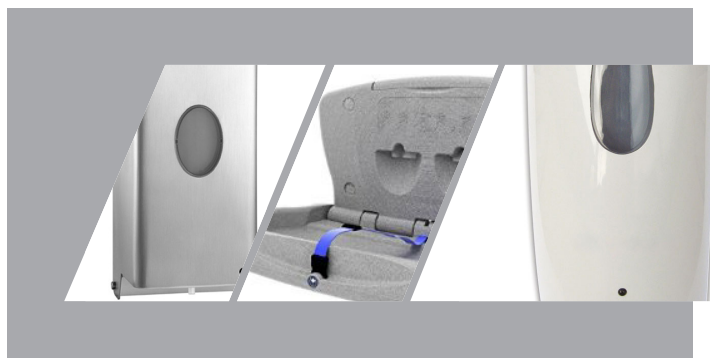
Scrub-Up Troughs are an essential piece of hospital equipment to enable one or more surgeons and nurses to scrub their hands and forearms.



Scrub-Up Troughs		
Product Code	Description	2018 RRP
Soap Dispenser - Standard		
AC05-012	Stainless steel scrub-up trough - Single station - 800mm wide - excluding taps	POA
AC05-011	Stainless steel scrub-up trough - 2 station - 1600mm - excluding taps	POA
AC05-010	Stainless steel scrub-up trough - 3 station - 2400mm - excluding taps	POA

## Washroom Hygiene

From soap dispensers and refills to baby changing stations, our washroom hygiene products cater for a range of applications.



Washroom Hygiene		
Product Code	Description	2018 RRP
<b>Soap Dispenser - Standard</b>		
AC00-030	Automatic soap dispenser - Stainless steel	£101.80
AC00-037	Automatic soap dispenser - White ABS	£101.80
AC00-032	Standard washroom soap re-fill - 800ml	£5.82
PP00-105	AA Battery	£1.33
AC00-038	Replacement key for AC00-030 soap dispenser	£4.15
<b>Soap Dispenser - Classic</b>		
SD01-004	Automatic Deck mounted soap dispenser - Chrome finish	£147.86
SD01-006	Automatic Deck mounted soap dispenser - Nickel brushed finish	£147.86
SD01-001	Automatic Wall mounted soap dispenser - Chrome finish	£150.83
SD01-005	Automatic Wall mounted soap dispenser - Nickel Brushed finish	£150.83
SD01-002	Automatic Swan soap dispenser - Chrome finish	£140.46
SD01-007	Automatic Swan soap dispenser - Nickel Brushed finish	£140.46
SD01-003	Automatic Pillar soap dispenser - Chrome finish	£147.86
SD01-008	Automatic Pillar soap dispenser - Nickel Brushed finish	£147.86
<b>Baby Change Units</b>		
AC00-040	Baby-minder - Horizontal changing station - Light Granite	£437.80
AC00-041	Baby-minder - Horizontal changing station - White	£403.70

## Safe Ensuites

The impressive DVS Safe Ensuite range has been designed and developed for high security applications, including; mental healthcare, custodial and more.



Safe Ensuites		
Product Code	Description	2018 RRP
<b>Sanitaryware</b>		
VR01-031	High security basin with integrated backplate with single spout (not including sensors) C/W high security waste grid	£473.00
VR01-005	High security basin and backplate (not including sensors)	£472.35
VR01-030	High security basin with integrated backplate (not including sensors) C/W high security waste grid	£472.99
VR01-001	High security basin only (without backplate)	£261.85
VR01-027	Replacement rubber bung/plug for waste outlet	£4.24
VR01-028	Waste grid for use with DVS high security basin	£10.59
VR01-032	Waste grid for use with DVS high security basin with integrated backplate	£10.59
VR01-002	High security backplate (not including sensors)	£211.79
VR01-003	High security low backplate (not including sensors)	£211.79
VR01-023	High security backplate for use with standard ceramic basins (not including sensors)	£254.15
VR01-024	High security bath filling backplate (not including sensors)	£254.15
VR01-004	Extended high security backplate with moulded shelf (not including sensors)	£282.38
VR00-001	Wave-on sensor for backplates with Blue insert (Cold) C/W 3m cable	£65.44
VR00-002	Wave-on sensor for backplates with Red insert (Hot) C/W 3m cable	£65.44
VR00-003	Wave-on sensor for backplates with Blue insert (Cold) C/W 15m cable	£90.17
VR00-004	Wave-on sensor for backplates with Red insert (Hot) C/W 15m cable	£90.17
VR00-005	Push sensor for backplates with Blue insert (Cold) C/W 3m cable	£65.44
VR00-006	Push sensor for backplates with Red insert (Hot) C/W 3m cable	£65.44
VR00-007	Push sensor for backplates with Blue insert (Cold) C/W 15m cable	£90.17
VR00-008	Push sensor for backplates with Red insert (Hot) C/W 15m cable	£90.17
VR00-040	Push sensor for backplates with blue insert (Cold) C/W 8m cable	£78.53
VR00-041	Push sensor for backplates with red insert (Hot) C/W 8m cable	£78.53
VR01-025	High security mirror with moulded frame	£146.33
VR01-026	High security soap dish	£98.83
VR01-037	High security mirror with moulded shelved surround	£181.21
VR00-010	Structural adhesive for securing mirrors and soap dishes	£46.13
VR01-010	High security WC pan (floor mount back-to-wall)	£649.49
VR01-034	High security WC pan (floor mount back-to-wall) Blue Top (RAL 5011 Blue)	£715.19
VR01-071	High security WC pan - V2 - Grey Top	£715.19
VR01-074	High security WC pan - V2 - Red Top	£715.19
VR01-016	Wall Mounted WC Seat. This kit is intended to be fixed through the wall to enable the seat to be safely removed- not to be attached to the pan.	£151.85
VR01-011	Disabled High security WC pan (floor mount back-to-wall) 60mm higher	£790.68
VR01-035	Disabled High security WC pan (floor mount back-to-wall) 60mm higher - Blue Top (RAL 5011 Blue)	£862.80



Safe Ensuites		
Product Code	Description	2018 RRP
VR01-072	Disabled High security WC pan - V2 (60mm higher) - Grey Top	£862.80
VR01-075	Disabled High security WC pan - V2 (60mm higher) - Red Top	£862.80
VR01-013	Side in-fill for high security WC pan - Left side	£724.32
VR01-014	Side in-fill for high security WC pan - Right side	£724.32
VR01-046	High security WC pan (floor mount back-to-wall) with double in-fills	£799.15
VR01-012	Disabled WC pan white enameled steel spacer box - Optional extra	£282.38
VR01-017	High security wall hung WC pan	£649.49
VR01-036	High Security wall hung WC pan - Blue Top (RAL 5011 Blue)	£715.19
VR01-073	High Security Wall Hung WC Pan - Grey Top	£715.19
VR01-076	High Security Wall Hung WC Pan - Red Top	£715.19
VR01-018	Bracket for wall hung WC pan (pair of brackets, only required if installing on to IPS)	£169.43
<b>High Security Basins - For use with Programmable Sensors</b>		
VR01-030	High security basin with integrated backplate (not including sensors) C/W high security waste grid	£472.99
VR01-039	High security basin with integrated backplate with single spout (not including sensors) C/W high security waste grid	£473.00
VR01-048	High security backplate (not including sensors)	£211.79
VR01-049	High security low backplate (not including sensors)	£211.79
VR01-050	Extended high security backplate with moulded shelf (not including sensors)	£282.38
VR01-051	High security basin and backplate (not including sensors)	£472.35
VR01-052	High security backplate for use with standard ceramic basins (not including sensors)	£254.15
VR01-053	High security bath filling backplate (not including sensors)	£254.15
VR01-080	High security basin with integrated backplate (not including sensors) C/W high security waste grid	£472.99
<b>Safe Ensuite Low Profile Basin</b>		
VR01-081	Safe Ensuite Low Profile Basin - NTH (No Tap Hole)	£373.69
VR01-082	Safe Ensuite Low Profile Basin - 1TH L (1 Tap Hole, Left)	£388.06
VR01-083	Safe Ensuite Low Profile Basin - 1TH R (1 Tap Hole, Right)	£388.06
VR01-084	Safe Ensuite Low Profile Basin - 2TH (2 Tap Hole)	£402.41
<b>Safe Ensuite Integrated Basin Options</b>		
VR01-090	Integrated Basin Single Outlet 2 Sensor Holes	
VR01-091	Integrated Basin Single Outlet Cold Sensor (Right) Hole Only	
VR01-092	Integrated Basin Single Outlet Hot Sensor (Left) Hole Only	
<b>Control Systems, Sensors and WC Flushing</b>		
VR07-004	Standard washroom control system kit - For use with DVS high security backplates	£679.15
VR07-003	Washroom control system kit - For when DVS high security backplates are not being used	£679.15
VR07-002	Washroom control system - Control box only	£261.77
VR07-001	Washroom control box for direct flushing	£254.50
VR07-020	Multi-Channel Washroom Control Box	£351.86
PP00-102	Replacement fuse for washroom control system - 20mm Glass (T) 160mA	£1.41
SH00-001	Wave-on shower sensor with 50mm s/steel bezel C/W 8m cable	£84.35
AC02-083	Tactile switch with 50mm s/steel bezel C/W 8m cable & Red indication insert	£78.53
AC02-041	Anti-vandal wave-on sensor with 50mm s/steel bezel C/W 3m cable & Red indication insert	£65.44
AC02-040	Anti-vandal wave-on sensor with 50mm s/steel bezel C/W 3m cable & Blue indication insert	£65.44



Safe Ensuities		
Product Code	Description	2018 RRP
AC02-047	Tactile switch with 50mm s/steel bezel C/W 3m cable & Red indication insert	£65.44
AC02-046	Tactile switch with 50mm s/steel bezel C/W 3m cable & Blue indication insert	£65.44
AC02-087	Tactile switch with 50mm s/steel bezel C/W 8m cable & Blue indication insert	£78.53
WC01-023	WC Flushvalve with in-built overflow (valve only) - 2" base	£145.43
WC02-014	Concealed tall plastic cistern kit - 2" kit	£98.89
Showerheads and Accessories		
SH07-040	High security showerhead - 30° C/W 60mm ½" BSP (suitable for panels up to 25mm thick)	£62.53
SH07-066	High security showerhead - 30° C/W 200mm ½" BSP (suitable for walls up to 150mm thick)	£79.99
SH00-024	Replacement loose white rings for the above showerheads	£4.36
SH07-042	High security showerhead - Ceiling mounted	£77.08
SH07-052	Backplate for securing SH07-042 ceiling mounted showerhead	£9.44
SH07-041	Oval fixing plate suitable for SH07-040, shower sensor and blending valve adjuster	£36.36
High Security Tap spouts		
AT07-055	High security tap nozzle - Basin mounted (AC17-054 recommended to be fitted after solenoid valve)	£47.99
AT07-054	High security tap nozzle - s/steel mounted (AC17-054 recommended to be fitted after solenoid valve)	£43.63
AT07-092	Angled deck mounted basin spout (AC17-042 recommended to be fitted after solenoid valve)	£90.41
AC17-054	Restrictaflow In-Line Flow Restricting Valve - 15mm DVS - 1lpm	£12.46
AC17-042	Restrictaflow In-Line Flow Restricting Valve - 15mm DVS - 2lpm	£12.46
AC02-056	Tap nozzle thread extension for 100mm wall thickness	£14.54
AC02-057	Tap nozzle thread extension for 150mm wall thickness	£17.45
AC02-058	Tap nozzle thread extension for 250mm wall thickness	£26.18
Key Switches		
AC04-018	Water control key switch kit - 12V DC	£152.70
AC04-016	Water control key switch (with 5m cable)	£79.99
AC04-019	Water control key switch - Two valve - 12V DC	£203.60
AC04-017	Key switch for 2 channel control C/W 5m cable	£79.99
Anti-Pick Sealant		
VR00-012	Anti-pick sealant with nozzle - In White - 250ml	£36.36
VR00-010	Structural adhesive for mirrors	£46.13
VR00-011	Special twin gun (only required for structural adhesive)	£109.07
Basin Fixing Kits		
VR01-006	Basin/backplate fixing kit for 100mm wall thickness	£30.86
VR01-007	Basin/backplate fixing kit for 150mm wall thickness	£34.90
VR01-008	Basin/backplate fixing kit for 250mm wall thickness	£53.24
Showerhead & Sensor Extensions		
AC02-056	Sensor or showerhead thread extension for 100mm wall thickness	£14.54
AC02-057	Sensor or showerhead thread extension for 150mm wall thickness	£17.45
AC02-058	Sensor or showerhead thread extension for 250mm wall thickness	£26.18
WC Pan Fixing Kit		

Safe Ensuities		
Product Code	Description	2018 RRP
VR01-021	WC pan fixing kit for 250mm wall thickness (supplied as standard with WC pan)	N/A
<b>Accessories</b>		
VR01-054	Ligature Resistant Coat Hook	£18.11
VR01-055	Ligature Resistant Toilet Paper Holder	£50.03
VR01-056	Safe Dispense Ligature Resistant Back Plates - Small	£86.25
VR01-057	Safe Dispense Ligature Resistant Back Plates - Medium	£92.00
VR01-058	Safe Dispense Ligature Resistant Back Plates - Large	£97.75
VR01-059	Stell Ventilation Grill Frame Housing 150mm x 150mm	£134.55
VR01-060	Stell Ventilation Grill Frame Housing 200mm x 200mm	£143.75
VR01-061	Stell Ventilation Grill Frame Housing 250mm x 250mm	£147.20
VR01-062	Stell Ventilation Grill Frame Housing 300mm x 300mm	£150.65
VR01-063	Stell Ventilation Grill Frame Housing 350mm x 350mm	£156.40
VR01-064	Stell Ventilation Grill Frame Housing 400mm x 400mm	£159.85
VR01-065	Stell Ventilation Grill Frame Housing 450mm x 450mm	£177.10
VR01-066	Stell Ventilation Grill Frame Housing 500mm x 500mm	£190.90
VR01-067	Ligature Resistant Shower Shelf	£51.75
VR01-068	Door Pull Handle on Plate - 450mm Long	£155.25
VR01-069	Door Pull Handle on Plate - 600mm Long	£166.75
<b>Ensuite Package 1 - High Risk (Excluding Shower)</b>		
VR01-010	High security WC pan (floor mount back-to-wall)	£649.49
VR01-030	High security basin with integrated backplate (not including sensors) C/W high security waste grid	£472.99
VR07-004	Standard washroom control system kit - For use with DVS high security backplates	£679.15
<b>VR07-004 kit breakdown:</b>		
VR07-002	Washroom control system - Control box only	N/A
VR00-002	Wave-on sensor for backplates with Red insert (Hot) C/W 3m cable	N/A
VR00-001	Wave-on sensor for backplates with Blue insert (Cold) C/W 3m cable	N/A
WC01-023	Flushvalve with in-built overflow (valve only) - 2" base	N/A
AC02-040	Anti-vandal wave-on sensor with 50mm s/steel bezel C/W 3m cable & Blue indication insert	N/A
AC17-009	12V DC Plastic valve - 12.7mm orifice - 0.2-8 BAR - 15mm Normally closed (x2)	N/A
WC02-014	Concealed tall plastic cistern kit - 2"	£98.89
AC17-047	Thermostatic mixing valve 4 in 1 - 15/22mm (for basin)	£65.44
<b>Ensuite Package 2 - High Risk (Including Shower)</b>		
VR01-010	High security WC pan (floor mount back-to-wall)	£649.49
VR01-030	High security basin with integrated backplate (not including sensors) C/W high security waste grid	£472.99
VR07-004	Standard washroom control system kit - For use with DVS high security backplates	£679.15
<b>VR07-004 kit breakdown:</b>		
VR07-002	Washroom control system - Control box only	N/A
VR00-002	Wave-on sensor for backplates with Red insert (Hot) C/W 3m cable	N/A
VR00-001	Wave-on sensor for backplates with Blue insert (Cold) C/W 3m cable	N/A
WC01-023	Flushvalve with in-built overflow (valve only) - 2" base	N/A
AC02-040	Anti-vandal wave-on sensor with 50mm s/steel bezel C/W 3m cable & Blue insert	N/A

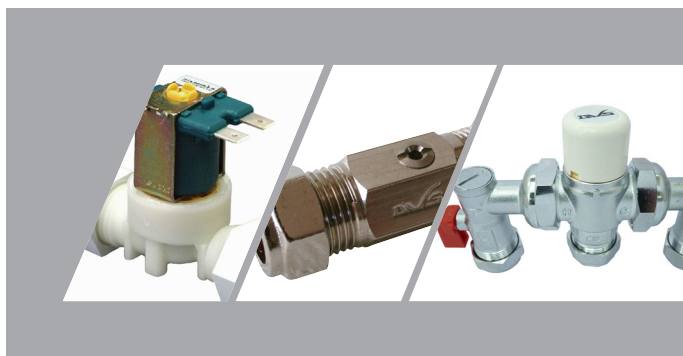
Safe Ensuities		
Product Code	Description	2018 RRP
AC17-009	12V DC Plastic valve - 12.7mm orifice - 0.2-8 BAR - 15mm Normally closed (x2)	N/A
WC02-014	Concealed tall plastic cistern kit - 2" kit	N/A
AC17-047	Thermostatic mixing valve 4 in 1 - 15/22mm (for basin)	N/A
SH07-040	High security showerhead - 30°	N/A
SH00-001	Wave-on shower sensor with 50mm s/steel bezel C/W 8m cable	N/A
AC17-009	12V DC Plastic valve - 12.7mm orifice - 0.2-8 BAR - 15mm Normally closed (for shower)	N/A
AC17-047	Thermostatic mixing valve 4 in 1 - 15/22mm (for shower)	N/A
<b>Ensuite Package 1 - High Risk (Excluding Shower) Wall Hung Pan</b>		
VR01-017	High security wall hung WC pan	£649.49
VR01-018	Bracket for Wall Hung Pan without powder coating (pair of brackets, only required if installing on to IPS)	£169.43
VR01-030	High security basin with integrated backplate (not including sensors) C/W high security waste grid	£472.99
VR07-004	Standard washroom control system kit - For use with DVS high security backplates	£679.15
<b>VR07-004 kit breakdown:</b>		
VR07-002	Washroom control system - Control box only	N/A
VR00-002	Wave-on sensor for backplates with Red insert (Hot) C/W 3m cable	N/A
VR00-001	Wave-on sensor for backplates with Blue insert (Cold) C/W 3m cable	N/A
WC01-023	Flushvalve with in-built overflow (valve only) - 2" base	N/A
AC02-040	Anti-vandal wave-on sensor with 50mm s/steel bezel C/W 3m cable & Blue indication insert	N/A
AC17-009	12V DC Plastic valve - 12.7mm orifice - 0.2-8 BAR - 15mm Normally closed (x2)	N/A
WC02-014	Concealed tall plastic cistern kit - 2" kit	£98.89
AC17-047	Thermostatic mixing valve 4 in 1 - 15/22mm (for basin)	£95.98
<b>Ensuite Package 2 - High Risk (Including Shower) Wall Hung Pan</b>		
VR01-017	High security wall hung WC pan	£649.49
VR01-018	Bracket for Wall Hung Pan without powder coating (pair of brackets, only required if installing on to IPS)	£169.43
VR01-030	High security basin with integrated backplate (not including sensors) C/W high security waste grid	£472.99
VR07-004	Standard washroom control system kit - For use with DVS high security backplates	£679.15
<b>VR07-004 kit breakdown:</b>		
VR07-002	Washroom control system - Control box only	N/A
VR00-002	Wave-on sensor for backplates with Red insert (Hot) C/W 3m cable	N/A
VR00-001	Wave-on sensor for backplates with Blue insert (Cold) C/W 3m cable	N/A
WC01-023	Flushvalve with in-built overflow (valve only) - 2" base	N/A
AC02-040	Anti-vandal wave-on sensor with 50mm s/steel bezel C/W 3m cable & Blue indication insert	N/A
AC17-009	12V DC Plastic valve - 12.7mm orifice - 0.2-8 BAR - 15mm Normally closed (x2)	N/A
WC02-014	Concealed tall plastic cistern kit - 2" kit	£98.89
AC17-047	Thermostatic mixing valve 4 in 1 - 15/22mm (for basin)	£95.98
SH07-040	High security showerhead - 30°	£62.53
SH00-001	Wave-on shower sensor with 50mm s/steel bezel C/W 8m cable	£84.35
AC17-009	12V DC Plastic valve - 12.7mm orifice - 0.2-8 BAR - 15mm Normally closed (for shower)	£37.81
AC17-047	Thermostatic mixing valve 4 in 1 - 15/22mm (for shower)	£95.98

Safe Ensuities		
Product Code	Description	2018 RRP
<b>Ensuite Package 1 - High Risk (Excluding Shower) Tactile</b>		
VR01-010	High security WC pan (floor mount back-to-wall)	£649.49
VR01-030	High security basin with integrated backplate (not including sensors) C/W high security waste grid	£472.99
VR07-002	Washroom control system - Control box only	£261.77
WC01-023	Flushvalve with in-built overflow (valve only) - 2" base	£145.43
AC02-046	Tactile switch with 50mm s/steel bezel C/W 3m cable & Blue indication insert	£65.44
VR00-006	Push sensor for backplates with Red insert (Hot) C/W 3m cable	£65.44
VR00-005	Push sensor for backplates with Blue insert (Cold) C/W 3m cable	£65.44
AC17-009	12V DC Plastic valve - 12.7mm orifice - 0.2-8 BAR - 15mm Normally closed (for basin) x2	£75.62
WC02-014	Concealed tall plastic cistern kit - 2" kit	£98.89
AC17-047	Thermostatic mixing valve 4 in 1 - 15/22mm (for basin)	£95.98
<b>Ensuite Package 2 - High Risk (Including Shower) Tactile</b>		
VR01-010	High security WC pan (floor mount back-to-wall)	£649.49
VR01-030	High security basin with integrated backplate (not including sensors) C/W high security waste grid	£472.99
VR07-002	Washroom control system - Control box only	£261.77
WC01-023	Flushvalve with in-built overflow (valve only) - 2" base	£145.43
AC02-046	Tactile switch with 50mm s/steel bezel C/W 3m cable & Blue indication insert	£65.44
VR00-006	Push sensor for backplates with Red insert (Hot) C/W 3m cable	£65.44
VR00-005	Push sensor for backplates with Blue insert (Cold) C/W 3m cable	£65.44
AC17-009	12V DC Plastic valve - 12.7mm orifice - 0.2-8 BAR - 15mm Normally closed (for basin) x 2	£37.81
WC02-014	Concealed tall plastic cistern kit - 2" kit	£98.89
AC17-047	Thermostatic mixing valve 4 in 1 - 15/22mm (for basin)	£95.98
SH07-040	High security showerhead - 30°	£62.53
AC02-083	Tactile switch with 50mm s/steel bezel C/W 8m cable & Red indication insert	£78.53
AC17-009	12V DC Plastic valve - 12.7mm orifice - 0.2-8 BAR - 15mm Normally closed (for shower)	£75.62
AC17-047	Thermostatic mixing valve 4 in 1 - 15/22mm (for shower)	£95.98
<b>Ensuite Package 2 - High Risk (Including Shower) Programmable Sensors</b>		
<b>WC</b>		
VR01-010	High security WC pan (floor mount back-to-wall)	£649.49
WC02-014	Concealed tall plastic cistern kit - 2" kit	£98.89
WC01-023	Flushvalve with in-built overflow (valve only) - 2" base	£145.43
AC02-037	Wall Mounted Brushed s/steel Programmable Sensor (WC)	£103.82
WC00-012	Low Voltage Flushvalve control box supplied with mains PSU	£154.80
<b>Basin</b>		
VR01-030	High security V2 basin with integrated backplate (not including sensors) C/W high security waste grid	£472.99
AC02-024	Wall Mounted Brushed s/steel Programmable Sensor (Tap) - Blue insert	£103.82
AC02-025	Wall Mounted Brushed s/steel Programmable Sensor (Tap) - Red insert	£103.82
AC17-047	Thermostatic mixing valve 4 in 1 - 15/22mm	£95.98
AT00-003	Two station mains kit standard pressure - 1-6 BAR	£221.78

Safe Ensuities		
Product Code	Description	2018 RRP
<b>Shower</b>		
SH07-040	High security showerhead - 30°	£62.53
AC02-033	Wall Mounted Brushed s/steel Programmable Sensor (Shower) - Red insert	£103.82
AC17-047	Thermostatic mixing valve 4 in 1 - 15/22mm	£95.98
AT00-002	Single station mains kit standard pressure - 1-6 BAR	£117.26
AC01-001	Hand held programmer with case - For use with all DVS programmable sensors & taps	£207.64
<b>Ensuite Basin &amp; Backplate only package</b>		
VR01-030	High security basin with integrated backplate (not including sensors) C/W high security waste grid	£472.99
AT07-015	Tap control system - Wave-on sensor kit for use with DVS high security backplates	£381.02
<b>AT07-015 Kit Breakdown:</b>		
AT07-001	Tap control system - control box only	N/A
VR00-002	Wave-on sensor for backplates with Red insert (Hot) - C/W 3m cable	N/A
VR00-001	Wave-on sensor for backplates with Cold insert (Cold) - C/W 3m cable	N/A
AC17-009	12V DC Plastic valve - 12.7mm orifice - 0.2-8 BAR - 15mm Normally closed (x2)	N/A
AC17-047	Thermostatic mixing valve 4 in 1 - 15/22mm	£95.98
<b>Ensuite Basin &amp; Backplate only Package - Programmable</b>		
VR01-030	High security V2 basin with integrated backplate (not including sensors) C/W high security waste grid	£472.99
AC02-024	Wall Mounted Brushed s/steel Programmable Sensor (Tap) - Blue insert	£103.82
AC02-025	Wall Mounted Brushed s/steel Programmable Sensor (Tap) - Red insert	£103.82
AC17-047	Thermostatic mixing valve 4 in 1 - 15/22mm	£95.98
AT00-003	Two station mains kit standard pressure - 1-6 BAR	£221.78
AC01-001	Hand held programmer with case - For use with all DVS programmable sensors & taps	£207.64

## Valves & Accessories

DVS also offer a wide range of parts for various applications including; solenoid valves, TMV's, Y-strainers and more.



Valves & Accessories		
Product Code	Description	2018 RRP
<b>Valves</b>		
AC17-047	Thermostatic mixing valve 4 in 1 - 15/22mm	£95.98
SH00-010	Temperature blending valve - 15mm	£36.36
AC17-039	Restrictaflow in-line flow restricting valve - 15mm	£8.17
AC17-038	Isolating valve - 15mm	£4.36
AC03-019	Standard Y-strainer compression - 15mm	£17.45
AC17-040	15mm Check Valve	£4.26
AC17-041	15mm Double Check valve	£7.13
<b>Standard latching valves</b>		
AC17-001	6V DC ASCO valve (H262601BW) 1.2mm orifice - 0-12 BAR - 15mm Brass latching	£53.81
AC17-002	6V DC ASCO valve (H262602BW) 2mm orifice - 0-12 BAR - 15mm Brass latching	£53.81
AC17-003	6V DC ASCO valve (H262603BW) 3.2mm orifice - 0-3 BAR - 15mm Brass latching	£53.81
AC17-004	6V DC ASCO valve (H262604BW) 4mm orifice - 0-2 BAR - 15mm Brass latching	£53.81
AC17-005	6V DC ASCO valve (H262605BW) 6.7mm orifice - 0-0.7 BAR - 15mm Brass latching	£53.81
AC17-006	6V DC ASCO valve (SCXH210G202BW) 12.7mm orifice - 0.35-10 BAR - 15mm Brass latching	£62.53
AC17-017	Replacement diaphragm for AC17-006 valve	£18.18
AC17-018	6V DC ASCO valve (SCXE210D095BW) 19mm orifice - 0.35-6 BAR ¾" BSP Female Brass latching	£101.80
<b>Anti-Microbial Valves</b>		
AC17-100	Anti-Microbial 6v Latching valve c/w Pheonix cable	£53.50
AC17-101	Anti-Microbial 12v Normall closed valve c/w 2 core cable	£39.41
AC17-102	Anti-Microbial 24v Normall closed valve c/w Franke actuator cable	£35.68
<b>Special applications</b>		
AC17-007	12V DC ASCO valve (SCXH262C202BW) 4mm orifice - 3W - 0-2 BAR - 15mm Brass Normally closed	£53.81
AC17-008	12V DC ASCO valve (SCXH262C90BW) 7.1mm orifice - 3W - 0-0.7 BAR - 15mm Brass Normally closed	£53.81
AC17-021	12V DC ASCO valve (SCX210G202BW 26072) 12.7mm orifice - 3W - 0.5-3 BAR - 15mm Brass Normally Closed	£61.08
AC17-024	12V DC ASCO valve (SCX210D95BW 12 DC) 19mm orifice - 0-1 BAR - ¾" BSP Female Brass Normally Closed	£129.23
AC17-023	12V DC ASCO valve (SCE238D004-029) 20mm orifice - 0.5-8 BAR - ¾" BSP Female Brass Normally Closed	£133.79

Valves & Accessories		
Product Code	Description	2018 RRP
AC17-025	12V DC ASCO valve (SCXE210D004E 26247) 25mm orifice - 0.35-3 BAR - 1" BSP Female Brass Normally Closed	£141.07
AC17-027	Valve latcher used for manually opening/closing ASCO latching valves	£79.32
<b>Plastic valves</b>		
AC17-009	12V DC Plastic valve - 12.7mm orifice - 0.2-8 BAR - 15mm Normally closed	£37.81
AC17-010	6V DC Plastic valve - 10.8mm orifice - 0.2-8 BAR - 15mm Latching	£41.25
AC17-043	12v DC Plastic valve - 12.7mm orifice - 0.2-8 BAR - 15mm Normally closed - 8m cable	£48.61
AC17-044	12v DC Plastic valve - 12.7mm orifice - 0.2-8 BAR - 15mm Normally closed - 15m cable	£60.85



## FRANKE

The Franke products range includes; push and electronic taps, flush controls, coin operated water delivery system, showers, spare parts and more.



FRANKE Products		
Product Code	Description	2018 RRP
<b>Taps</b>		
AQRE130	AQUA PROTRONIC battery operated dual feed with mixer lever. Non-return valves in-built to flexi tails.	£310.73
AQRE132	AQUA PROTRONIC battery operated dual feed with concealed lever. Non-return valves in-built to flexi tails.	£279.05
AQRE131	AQUA PROTRONIC battery operated mono feed. Non-return valves in-built to flexi tails.	£279.49
AQRE133	PROTRONIC-C mains-supplied washbasin mixer with touch-free operation. Non-return valves in-built to flexi tails.	£281.11
AQUA130	PROTRONIC-S mixer tap with battery operation. Non-return valves in-built to flexi tails.	£203.57
AQUA131	PROTRONIC-S tap for pre-mix water c/w battery	£193.54
AQUA134	PROTRONIC-S mixer tap with electrical operation. Non-return valves in-built to flexi tails.	£266.26
AQUA135	PROTRONIC-S tap with pre-mix, electrical operation. Non-return valves in-built to flexi tails.	£281.88
AQRM905UK	Wall Mounted Spout 234mm Extd Thread	£102.77
AQRM906UK	Wall Mounted Spout 165mm Extd Thread	£91.00
AQRM907UK	Wall Mounted Spout 78mm Extd Thread	£187.99
AQUA109	Washbasin sensor and solenoid valve	£160.72
AQUA203	AQUALINE-C self-closing pillar tap for connecting to cold water (Min. water pressure 1 BAR)	£76.84
AQUA203L	Aqualine-C Self Closing Low Pressure - With dynamic water pressure between 0.5 and 1 bar (for connecting to cold water). Non-return valves in-built to flexi tails.	£86.53
AQUA213	AQUALINE-C self-closing pillar tap for connecting to cold water with anti-blocking system (ABS) Comes complete with Red Indices. (Minimum water pressure 1 BAR)	£99.65
AQUA203W	AQUALINE-C self-closing pillar tap for connecting to pre-mixed warm water Comes complete with Red Indices. (Minimum water pressure 1 BAR)	£79.73
AQUA203WL	Aqualine-C Self closing low pressure pillar tap - With dynamic water pressure between 0.5 and 1 bar (for connecting to pre-mixed warm water). Non-return valves in-built to flexi tails.	£82.41
AQUA213W	AQUALINE-C self-closing pillar tap for connecting to pre-mixed warm water with anti-blocking system (ABS) Comes complete with Red Indices. (Minimum water pressure 1 BAR)	£115.98
AQUA201	AQUALINE-S self-closing pillar tap for connecting to cold water (Min water pressure 1 BAR)	£66.62
AQUA211	AQUALINE-S self-closing pillar tap for connecting to cold water with anti-blocking system (ABS) (Minimum water pressure 1 BAR) (See special offers)	£83.41
AQUA201W	AQUALINE-S self-closing pillar tap for connecting to pre-mixed warm water. Comes complete with Red Indices (Minimum water pressure 1 BAR)	£73.55
AQUA211W	AQUALINE-S self-closing pillar tap for connecting to pre-mixed warm water with anti-blocking system (ABS) (Minimum water pressure 1 BAR)	£108.89
AQUA202	AQUAMIX-C Self closing single mixer (with connecting hoses) with dynamic water pressure above 1 bar. Non-return valves in-built to flexi tails.	£117.50
AQUA202L	AQUAMIX-C Self Closing Low Pressure (with connecting hoses) with dynamic water pressure between 0.5 and 1 bar. Non-return valves in-built to flexi tails.	£144.52



FRANKE Products		
Product Code	Description	2018 RRP
AQUA212	AQUAMIX-C Self closing single mixer with ABS function (with connecting hoses) Non-return valves in-built to flexi tails.	£153.59
AQUA202P	AQUAMIX-C Self closing single mixer (with connecting copper tails)	£161.47
AQUA212P	AQUAMIX-C Self closing single mixer (with connecting copper tails) with ABS function	£183.21
AQUA200	AQUAMIX-S Self closing single mixer (with connecting hoses). Non-return valves in-built to flexi tails. (With new valve & with option for connecting to ZAQFT0006 hygiene box)	£129.60
AQUA210	AQUAMIX-S Self closing single mixer (with connecting hoses) with ABS function. Non-return valves in-built to flexi tails. (With new valve & with option for connecting to ZAQFT0006 hygiene box)	£150.65
ZAQFT0006	Optional Hygiene unit for use with new versions AQUA200 & AQUA210	£249.08
AQUA200P	AQUAMIX-S Self closing single mixer (with connecting copper tails)	£148.08
AQUA210P	AQUAMIX-S Self closing single mixer (with connecting copper tails) with ABS function	£170.85
AQRM271	AQUAMIX self closing single mixer wall mounted 173mm projection. Non-return valves in-built to flexi tails.	£255.13
AQRM272	AQUAMIX self closing single mixer wall mounted 233mm projection. Non-return valves in-built to flexi tails.	£270.92
AQUA205	AQUALINE-S self-closing bib tap for connecting to cold water. (Min water pressure 1 BAR)	£67.50
AQUA215	AQUALINE-S self-closing bib tap for connecting to cold water with anti-blocking system (ABS) (Minimum water pressure 1 BAR)	£78.92
AQUA205W	AQUALINE-S self-closing bib tap for connecting to pre-mixed warm water. Comes complete with Red Indices. (Minimum water pressure 1 BAR)	£68.24
AQUA215W	AQUALINE-S self-closing bib tap for connecting to pre-mixed warm water with anti-blocking system (ABS) Comes complete with Red Indices. (Minimum water pressure 1 BAR)	£78.69
Z-AQUA002	Extension Adapter 30mm	£11.61
Z-AQUA003	Rosette for compensating length for valve alignment function for covering gaps for use with AQUALINE-S Tap	£2.95
Z-AQUA094	Compact Power Supply AQUA 3000 Open	£94.33
AQRM905	Wall Mounted Spout 234mm projection (Up to 8mm thick panel)	£68.99
AQRM906	Wall Mounted Spout 165mm projection (Up to 8mm thick panel)	£57.72
AQRM907	Wall Mounted Spout 78mm projection (Up to 8mm thick panel)	£48.82
AQRM910	Twist Proof Set 8955 00 20	£32.99
AQUA102	PROTRONIC Mixer Tap (for AQUA 3000 Open Connection). Non-return valves in-built to flexi tails.	£335.77
AQUA103	PROTRONIC Single Feed Tap (for AQUA 3000 Open Connection). Non-return valves in-built to flexi tails.	£304.93
PRTRS0008	PROTRONIC-S washbasin mixer with temperature lever, 230V AC (Replaces by AQUA132)	£265.14
PRTR0017	Touch-free, time-controlled electronic on-wall mounted wash tap - 200mm	£314.89
PRTR0018	Touch-free, time-controlled electronic on-wall mounted wash tap - 160mm	£314.89
ZPRTR0001	Remote control for use with PRTR0018 & PRTR0017	£149.93
<b>AQUAFIT</b>		
AQFT0001	AQUAFIT single lever mixer with connecting hoses	£128.67
AQFT0017	AQUAFIT single lever mixer with connecting hoses, with thermostatic scald-protection (Not TMV3 approved) (Replaces AQFT0003)	£152.44
ZAQFT0001	Hygiene unit for AQUAFIT single lever mixer with connecting hoses	£254.70
ZAQFT0002	Hygiene unit for AQUAFIT single lever mixer with connecting pipes	£247.12
ZAQCT0003	Battery compartment	£24.37

FRANKE Products		
Product Code	Description	2018 RRP
EPRTS0024	AC adapter plug (replaces ZPRTS0001)	£22.07
ZAQCT0001	Power supply for installation in the wall	£80.33
ZAQUA091	Remote control for PROTRONIC / -C / -S AQUACONTACT and AQUAFIT hygiene unit	£91.30
ZAQUA007	Power Supply for UK	£83.87
<b>PROTRONIC-T electronic wash taps</b>		
PRTR0002	PROTRONIC-T washbasin tap with 6V battery	£234.92
PRTR0003	PROTRONIC-T washbasin mixer with 6V battery	£261.83
PRTR0004	PROTRONIC-T washbasin mixer with concealed mixing, 6V battery	£262.16
PRTR0005	PROTRONIC-T washbasin tap, 230V AC	£231.32
PRTR0006	PROTRONIC-T washbasin mixer, 230V AC	£262.31
PRTR0007	PROTRONIC-T washbasin mixer with concealed mixing, 230V AC	£260.06
PRTR0008	PROTRONIC-T washbasin mixer for open low-level hot water heater, 230V AC	£291.64
PRTR0009	PROTRONIC-T washbasin mixer with 5 l low-level hot water heater, 230V AC	£383.49
ZAQUA091	Remote control for PROTRONIC / -C / -S AQUACONTACT and AQUAFIT hygiene unit	£91.30
AQRE915	Extension cable 3 m	£34.18
<b>AQUACONTACT washbasin fitting / PROTORNIC-T - A3000 open wash tap</b>		
AQCT0043	Finished installation kit AQUACONTACT washbasin fitting	£220.89
AQCT0044	Basic installation kit AQUACONTACT washbasin fitting	£47.24
ZAQCT0003	Battery compartment	£24.37
ZAQCT0001	Power supply for installation in the wall	£80.33
AQRE915	Extension cable 3 m	£34.18
ZAQUA091	Remote control for PROTRONIC / -C / -S AQUACONTACT and AQUAFIT hygiene unit	£91.30
PR3O0002	PROTRONIC-T AQUA 3000 OPEN washbasin tap, 24V DC	£311.25
PR3O0003	PROTRONIC-T AQUA 3000 OPEN washbasin mixer, 24V DC	£344.83
<b>Ready-to-connect tap units for 2 to 6 wash places</b>		
AQFU0001	Ready-to-connect tap unit for 2 wash places 600 mm	£601.14
AQFU0007	Ready-to-connect tap unit for 3 wash places 600 mm	£764.25
AQFU0013	Ready-to-connect tap unit for 4 wash places 600 mm	£1042.54
AQFU0019	Ready-to-connect tap unit for 5 wash places 600 mm	£1059.88
AQFU0025	Ready-to-connect tap unit for 6 wash places 600 mm	£1140.54
AQFU0004	Ready-to-connect tap unit for 2 wash places 700 mm	£676.40
AQFU0010	Ready-to-connect tap unit for 3 wash places 700 mm	£893.28
AQFU0016	Ready-to-connect tap unit for 4 wash places 700 mm	£1021.43
AQFU0022	Ready-to-connect tap unit for 5 wash places 700 mm	£1067.08
AQFU0028	Ready-to-connect tap unit for 6 wash places 700 mm	£1365.33

FRANKE Products		
Product Code	Description	2018 RRP
AQFT0005	AQUAFIT single lever mixer for tap unit	£143.42
AQMXS0002	AQUAMIX-S self-closing mixer for tap unit	£153.63
<b>Ready-to-connect tap units for 2 to 6 wash places including hygiene kit</b>		
AQFU0002	Ready-to-connect tap unit for 2 wash places 600 mm with hygiene kit, connection left	£830.15
AQFU0003	Ready-to-connect tap unit for 2 wash places 600 mm with hygiene kit, connection right	£830.15
AQFU0008	Ready-to-connect tap unit for 3 wash places 600 mm with hygiene kit, connection left	£947.90
AQFU0009	Ready-to-connect tap unit for 3 wash places 600 mm with hygiene kit, connection right	£947.90
AQFU0014	Ready-to-connect tap unit for 4 wash places 600 mm with hygiene kit, connection left	£1226.18
AQFU0015	Ready-to-connect tap unit for 4 wash places 600 mm with hygiene kit, connection right	£1226.18
AQFU0020	Ready-to-connect tap unit for 5 wash places 600 mm with hygiene kit, connection left	£1243.51
AQFU0021	Ready-to-connect tap unit for 5 wash places 600 mm with hygiene kit, connection right	£1243.51
AQFU0026	Ready-to-connect tap unit for 6 wash places 600 mm with hygiene kit, connection left	£1324.07
AQFU0027	Ready-to-connect tap unit for 6 wash places 600 mm with hygiene kit, connection right	£1324.07
AQFU0005	Ready-to-connect tap unit for 2 wash places 700 mm with hygiene kit, connection left	£860.04
AQFU0006	Ready-to-connect tap unit for 2 wash places 700 mm with hygiene kit, connection right	£860.04
AQFU0011	Ready-to-connect tap unit for 3 wash places 700 mm with hygiene kit, connection left	£1076.92
AQFU0012	Ready-to-connect tap unit for 3 wash places 700 mm with hygiene kit, connection right	£1076.92
AQFU0017	Ready-to-connect tap unit for 4 wash places 700 mm with hygiene kit, connection left	£1205.07
AQFU0018	Ready-to-connect tap unit for 4 wash places 700 mm with hygiene kit, connection right	£1205.07
AQFU0023	Ready-to-connect tap unit for 5 wash places 700 mm with hygiene kit, connection left	£1250.75
AQFU0024	Ready-to-connect tap unit for 5 wash places 700 mm with hygiene kit, connection right	£1250.75
AQFU0029	Ready-to-connect tap unit for 6 wash places 700 mm with hygiene kit, connection left	£1437.53
AQFU0030	Ready-to-connect tap unit for 6 wash places 700 mm with hygiene kit, connection right	£1437.53
AQFT0005	AQUAFIT single lever mixer for tap unit	£143.42
AQFT0006	AQUAFIT single lever mixer for tap unit with hygiene kit	£145.23
AQMXS0002	AQUAMIX-S self-closing single mixer for tap unit	£153.63
AQMXS0003	AQUAMIX-S self-closing single mixer for tap unit with hygiene kit	£152.98
<b>PURELINE</b>		
PURE0001	PURELINE self-closing pillar tap for connection to cold water or pre-mixed warm water, flow time 15s	£35.07
PURE0002	PURELINE self-closing bib tap 78mm projection for connection to cold water or pre-mixed warm water, flow time 15s	£35.19
PURE0005	PURELINE self-closing pillar mixer with temperature selection lever, for connection to hot and cold water, flow time 15s	£69.72
PURE0007	PURELINE self-closing shower valve WM with outlet thread & rosette, for connecting to cold or pre-mixed warm water, flow time 15s	£30.58

FRANKE Products		
Product Code	Description	2018 RRP
PURE0009	PURELINE self-closing straight-way valve WM for shower facilities, for connecting to cold or pre-mixed warm water, flow time 15s	£35.63
ZPURE0001	PURELINE extension adapter for self-closing bib taps for washing facilities, length 50mm	£12.23
ZPURE0002	Extension set for PURELINE self-closing single mixer for installation in walls, length 25mm	£16.45
<b>Tap Spare Parts</b>		
8250001052	Push cap complete for use with AQUAMIX-C and AQUAMIX-S taps	£10.15
8250001056	Push cap complete for use with AQUALINE-S taps	£11.19
8250001057	Push cap complete for use with AQUALINE-C taps	£12.46
8250001058	Spare part set for use with AQUAMIX-C and AQUAMIX-S taps	£13.62
8201402023	Thread ring M33 x 1 for use with AQUALINE-C and AQUALINE-S taps	£1.54
ETAPS0009	Functional part complete ABS, for use with AQUA213, AQUA213W, AQUA211, AQUA211W, AQUA212, AQUA212P, AQUA210, AQUA210P, AQUA215, AQUA215W	£33.30
ETAPS0002	Functional part complete standard, for use with AQUA203, AQUA203W, AQUA201, AQUA201W, AQUA202, AQUA202P, AQUA200, AQUA200P, AQUA205, AQUA205W	£19.26
ETAPS0017	Functional part complete low pressure, for use with AQUA203L, AQUA203WL, AQUA202L	£22.80
8101303057VPE	Aerator with regulator, for use with all AQUA taps, not low pressure	£21.99
Z-AQUA087	Theft proof aerator for use with all taps not low pressure	£6.12
8150002012	Installation set for use with AQUA202P, AQUA212P, AQUA200P & AQUA210P	£15.16
EPTR0009	8150003028 Installation set for use with AQUA202, AQUA202L, AQUA212, AQUA200, AQUA210	£3.83
Z-AQUA093	Face pin wrench for use with AQUAMIX-C and AQUAMIX-S taps	£11.32
8210003603	Cartridge complete with quad-rings for AQUAMIX-C and S	£6.34
8510020603	Replacement flexi hose for AQRE131	£5.35
8510020198	Mixing Lever with screw, for an AQUA PROTRONIC AQRE130	£6.66
AT00-026	Replacement single battery (for use with AQUA130)	£8.35
2000104729	Colour marking blue, for AQUAMIX push-cap, packing unit 10 pieces	£4.43
2000104730	Colour marking red, for AQUAMIX push-cap, packing unit 10 pieces	£4.24
<b>WCs</b>		
AQUA557	Flushing plate for WC cistern - Single flush - 148x207x35mm to suit installation frames	£72.34
AQUA555	Flushing plate for WC cistern - Push button - 145x205x35mm to suit installation frames	£68.43
AT3O0051	AQUATIMER - AQUA 3000 OPEN electronically controlled WC control for concealed cistern (replaces the AQUA503)	£438.12
PR3O0027	PROTRONIC - AQUA 3000 OPEN opto-electronic WC control for concealed toilet cistern (replaces the AQUA504)	£460.19
AQRM555	Push button WC flush valve for in-wall mounting 225x205mm	£147.99
AQRM552	AQUALINE WC flush valve DN 20 for surface installation	£63.19
AQUA501	Electronic timer-controlled WC flush valve for in-wall mounting 225x205mm	£434.24
FLSY0002	WC Cistern Dual Flush Duct Mount (replaces Z-AQUA079)	£88.19
CMPX135	Installation frame	£221.79
Z-CMPX140	Bracket set	£4.70
AQFX0006	AQUAFIX Installation element for wall-mounted toilet bowl, with wall-installation cistern (replaces CMPX140)	£153.23

FRANKE Products		
Product Code	Description	2018 RRP
AQFX0007	AQUAFIX Installation frame for barrier-free wall-mounted toilet bowl, with wall-installation cistern (replaces CMPX141)	£175.07
<b>Urinals</b>		
AQRE432	Sensor controlled flush valve - 230V	£175.76
AQRE431	Sensor controlled flush valve - battery	£196.29
AQRE434	Installation box for urinal flush valves	£133.08
AQUA402	Protronic AQUA 3000 OPEN Touch free sensor and solenoid valve for urinals	£188.52
AQUA401	Urinal IR sensor/valve AQUA 3000 OPEN	£289.00
AQUA420	Electronic siphon control for Franke s/steel urinals	£304.28
AQRM460	AQUALINE urinal flush valve for surface installation	£61.71
AQRM464	AQUALINE urinal flush valve for surface installation, all-metal construction	£69.60
<b>Flush-S and -C urinal flush valves</b>		
AQLN0006	Basic installation kit for FLUSH-C, FLUSH-S urinal flush valve	£62.88
AQLN0005	FLUSH-C urinal flush valve, finished installation kit	£114.17
PRTR0013	FLUSH-S urinal flush valve, finished installation kit, 6V battery	£156.79
PRTR0014	FLUSH-S urinal flush valve, finished installation kit, 230V AC	£191.98
ZPRTR0001	Remote control for FLUSH-S	£149.93
AQFX0002	AQUAFIX installation element for s/steel urinals with basic installation kit	£200.95
AQFX0001	AQUAFIX installation element for ceramic urinals with basic installation kit	£180.21
<b>Showers</b>		
AQRM665	S/steel shower panel with self-closing stop valve	£341.37
AQUA623	Shower panel with electronic timer (water efficient showerhead)	£528.40
AQUA754	AQUAJET Slimline shower head - 6 LPM flow rate	£38.94
AQUA755	AQUAJET Slimline shower head - 9 LPM flow rate	£38.90
AQUA756	AQUAJET Slimline shower head - 12 LPM flow rate	£39.29
ESHAS0001	8150001050 Spare part set for shower head AQUAJET-Slimline	£7.76
Z-AQUA004	Twist-proof set	£1.41
AQUA800	AQUAPAY Coin-operated controller for single shower - for tokens	£745.67
AQUA802	Token Operated Controller for up to 31 Showers	£973.39
ZAQRP001	Tokens for AQUAPAY controller - Pack of 50	£17.25
AQUA615	Touch free sensor and solenoid valve for showers	£172.77
AQRM704	Manual self-closing shower valve for installation into walls with adhesive flange	£96.26
AQRM676	Manual self-closing shower valve for installation into walls without adhesive flange	£53.33
AQRM677	Manual self-closing shower valve for installation into walls - Valve and fascia	£96.47
AQUA605	Electronic self-closing shower valve for installation into walls - Installation kit for fitting into walls with adhesive flange	£136.24
AQUA604	Basic installation kit for AQUA 3000 OPEN electronic-controlled thermostatic mixer DN 15 for in-wall installation in shower or wash facilities. With adhesive flange	£114.62
AQRM666	AQUALINE self-closing shower valve for surface pipe installation - With internal thread	£67.08
AQRM667	AQUALINE self-closing shower valve for surface pipe installation - With union connector	£78.56
AQUA627	AQUATIMER - AQUA 3000 OPEN shower fitting finished installation kit, 24V DC	£451.63
AQUA629	AQUATIMER - AQUA 3000 OPEN shower fitting for in-wall installation, 24V DC	£340.05
AQRM668	AQUALINE self-closing shower valve for duct wall installation	£60.26
AQRM688	Basic installation kit for mixers DN 15, for in-wall installation in shower facilities	£57.35

FRANKE Products		
Product Code	Description	2018 RRP
AQRM699	Shower control	£244.36
AQRM656	AQUAMIX self-closing mixer DN 15 for installation into walls, for connection to hot and cold water, flow time adjustment. Consisting of self-closing single mixer, holding frame and s/ steel cover plate 205x225mm	£160.87
AQUA602	Basic installation kit for AQUA 3000 OPEN thermostatic mixer, 24V DC	£81.65
AT3O0038	AQUATIMER - AQUA 3000 OPEN shower mixer with thermostat, finished inst. Kit	£443.86
AQLT0098	AQUALINE-Therm - shower panel with self-closing valve & thermostatic (replaces AQRM687)	£463.96
<b>SMARTWAVE Shower Panel</b>		
AQMX0008	SMARTWAVE shower panel with AQUAMIX self-closing mixer	£366.45
AQLT0036	SMARTWAVE shower panel with AQUALINE-Therm self-closing thermostatic mixer	£415.50
ZSHOW0012	SMARTWAVE Installation and maintenance kit	£60.01
<b>AQUALINE-Therm self-closing thermostatic mixer for shower facilities</b>		
AQLT0045	AQUALINE-Therm self-closing thermostatic mixer for surface installation	£313.73
AQLT0046	AQUALINE-Therm self-closing thermostatic mixer for surface installation, ASE	£298.96
AQLT0049	AQUALINE-Therm self-closing thermostatic mixer with AQUAJET-Slimline	£315.97
AQLT0050	AQUALINE-Therm self-closing thermostatic mixer with AQUAJET-Slimline, ASE	£238.51
AQLT0053	AQUALINE-Therm self-closing thermostatic mixer for surface installation, hand shower connection	£262.31
<b>AQUACONTACT - shower fittings with touch sensor</b>		
AQCT0042	Basic installation kit with adhesive flange for AQUACONTACT shower fitting	£112.26
AQCT0045	Basic installation kit without adhesive flange for AQUACONTACT shower fitting	£60.11
AQCT0025	Finished installation kit AQUACONTACT shower fitting	£173.43
AQRM698	Basic installation kit with adhesive flange for AQUACONTACT shower fitting with thermostatic mixer	£93.41
AQCT0027	AQUACONTACT shower fitting for concealed installation	£180.75
AQCT0005	AQUACONTACT shower panel, made of s/steel with shower head AQUAJET-Slimline	£457.23
AQCT0009	AQUACONTACT shower panel, made of s/steel with shower head AQUAJET-Comfort	£456.56
AQCT0006	AQUACONTACT shower panel, made of s/steel with shower-gel tray, shower head AQUAJET-Slimline	£437.78

FRANKE Products		
Product Code	Description	2018 RRP
AQCT0018	AQUACONTACT shower panel, made of s/teel with thermostat, shower-gel tray, shower head AQUAJET-Slimline	£563.39
AQCT0031	AQUACONTACT shower panel made of mineral material with shower head AQUAJET-Slimline	£435.24
AQCT0032	AQUACONTACT shower panel made of mineral material, with shower-gel tray, shower head AQUAJET-Slimline	£454.31
AQCT0037	AQUACONTACT shower panel made of mineral material, with thermostat, shower head AQUAJET-Slimline	£584.81
AQCT0050	SMARTWAVE AQUACONTACT Shower panel, water connectivity from above	£456.92
AQCT0051	SMARTWAVE AQUACONTACT Shower panel, water connectivity from rear	£506.15
<b>Mandatory Accessories for use with SMARTWAVE AQUACONTACT</b>		
ZAQCT0003	Battery Box - 6V Battery included	£24.37
ZAQCT0004	Mains Power Supply	£113.82
ZAQCT0005	Extension cable	£11.69
<b>Optional Accessories for use with SMARTWAVE AQUACONTACT</b>		
ZAQCT0002	Solenoid valve cartridge, 6V DC	£54.27
ZAQUA091	Remote control for PROTRONIC / -C / -S AQUACONTACT and AQUAFIT hygiene unit	£91.30
ZAQCT0001	Power supply for installation in the wall	£80.33
AQRE915	Extension cable 3m	£34.18
<b>A3000 Accessories</b>		
ZAQUA073	Extension for T-connector 5m	£26.72
ZA3OP0005	Sensor Extension C/W 1m cable	£16.82
ZA3OP0004	Sensor Extension C/W 2m cable	£14.99
ZA3OP0003	Sensor Extension C/W 5m cable	£21.21
8403212406	Sensor adapter plug for external 2 wire connection C/W 1m cable	£9.30
8403212407	Sensor adapter jack for external 2 wire connection (e.g. door contact) C/W 1m cable	£5.71
ZFLSY0003	Transformer 230/24V AC, 100 VA	£173.73
ZAQUA076	Electronic module - AQUA 3000 OPEN, or 3-way valve	£232.15
ZAQUA023	3-way valve 24V AC	£337.12



FRANKE Products		
Product Code	Description	2018 RRP
8403212409	Y Connector - Sensor Piezo	£21.28
ZA3OP0002	Actuator Extension cable 2m	£12.95
8403212420	Y Connector - Actuator	£9.45
8403212521	Adapter cable for piezo sensor 0.1m	£4.97
EAT3O0001	Piezo push button with rosette	£43.23
8410017198	Adapter cable for connection between EM and RPE-valve 7W	£9.00
ETAPS0023	Solenoid valve 7W	£18.26
8510017181	IR Sensor - chrome polished without logo	£83.10
ZA3OP0025	Power supply unit 60W	£114.55
AQRE908	Power supply unit 48W	£70.92
AQRM556	Installation set for AQRM555 & AQUA501	£50.53
AQRM920	Down pipe for flush valve	£12.25
AQUA500	Installation set for AQUA501	£80.53
AQUA502	Infra red button plate	£435.90
Z-AQUA005	ECC (Ethernet Can Coupler) 60W	£269.29
Z-AQUA006	UPS (Uninterruptible Power Supply) Battery Back up	£419.17
Z-AQUA011	BUS Cable 100m Halogen Free (Blue)	£294.11
Z-AQUA012	BUS Cable 25m Halogen Free (Blue)	£79.92
Z-AQUA013	System cable coupling (5 per pack)	£53.45
Z-AQUA014	Cable Terminator	£23.79
Z-AQUA015	Solenoid valve cartridge	£52.98
Z-AQUA017	Temperature Sensor	£18.97
Z-AQUA020	Surface Sensor Warm - For Pipe Fitment	£21.46
Z-AQUA021	Surface Sensor Cold - For Pipe Fitment	£20.70
Z-AQUA022	Key Switch	£101.43
Z-AQUA075	T Connector	£20.18
Z-AQUA077	BUS Cable 100m (Grey)	£106.02
Z-AQUA078	BUS Cable 25m (Grey)	£34.92
Z-AQUA084	S/steel circular plate for Protronic Sensors	£33.49
AQRM310	Minitherm low-level thermostatic device with connection set	£117.64
8510020582	EPTR0004 PROTRONIC solenoid self-closing valve cartridge, 24V DC	£58.17
8510020583	ESHOW0014 Bypass solenoid valve cartridge 24V DC	£64.20
AQUA767	AQUAMIX self-closing single mixer, finished installation kit	£184.98
8510020602	Lever mixer with temperature limit stop for safety and comfort	£14.40
8510020364	Set of input screw connections	£10.21
8410017351	Piezo button rosette plate	£24.60
ZA3OP0023	WC Cistern Motor (Replaces 46040000)	£148.09
ZA3OP0009	Extension cable red AQUA 3000 OPEN for temperature sensor - Hot	£10.62
ZA3OP0010	Extension cable red AQUA 3000 OPEN for temperature sensor - Cold	£13.40
8410017108ID00	EM1 Electronic module without any ID program to use for service technicians only.	£105.28
FITG0003	Electronically Operated Push Button for Mounting Unit from front	£733.85
8410017127	Piezo sensor incl. s/steel plate	£73.72
8403212521	Sensor adapter cable 0.1m	£4.97



FRANKE Products		
Product Code	Description	2018 RRP
ZAQUA032	Solenoid valve ½"	£58.78
ETAPS0022	Solenoid valve AQUA 3000 Open 24V DC, connections G ¾ B, water protected model with moulded inductor, strainer and connector for AQUANET.	£69.22
EPTR0004	PROTRONIC solenoid self-closing valve cartridge with connection adapter for cable plug, for urinal flush fittings, 24V DC, AQUA 3000 OPEN.	£58.17
EAQLT0017	Thermocouple, with rising spindle (replaces ESHOW0013)	£62.25
ZA3OP0011	ECC-2 function controller - AQUA 3000 OPEN with Ethernet, 230V AC / 24V DC	£606.68
ZA3OP0012	Expansion module (I/O)	£306.95
ZA3OP0013	Radio module (GSM)	£521.70
ZA3OP0015	Rod antenna for radio module (GSM)	£39.20
ZA3OP0016	Wall antenna for radio module (GSM)	£122.48
ZA3OP0017	Antenna with amplifier for radio module (GSM)	£432.95
EA3OP0009	Fitting Group with ball valve	£47.20
ZA3OP0022	ECC-2 with BMS protocol (BacNet, KNX, ModBus)	£849.18
Z-AQUA082	Time Switch	£125.33
AT00-043	AQUA 3000 OPEN Interface Unit	£142.20
AC17-060	24V DC Normally Closed ASCO Valve 12.7mm	£68.72
AC17-061	24V DC Normally Closed ASCO Valve 12.7mm with A3000 Cable 0-3 Bar 3W	£84.36
AC02-053	Tactile switch with 50mm s/steel bezel & blue insert (cold) A3000 2m cable	£77.72
AC02-054	Tactile switch with 50mm s/steel bezel & red insert (hot) A3000 2m cable	£77.72
VR00-065	Push sensor for backplates with blue insert (cold) A3000 2m cable	£77.72
VR00-066	Push sensor for backplates with red insert (red) A3000 2m cable	£77.72
<b>A3000 Electronic Modules</b>		
8410017108ID00	2000104811 EM1 (Electronic Module Type1) without any ID program to use for service technicians	£111.28
EA3OP0058	EM1 Electronic Module for A3000 Open Sanitary Fittings - DVS Clinical Shower (P)	£141.72
EA3OP0059	EM2 Electronic Module for A3000 Open Sanitary Fittings - DVS SE WC (P)	£155.75
EA3OP0060	0 EM1 Electronic Module for A3000 Open Sanitary Fittings - DVS SE WHB (P)	£141.72
EA3OP0061	EM1 Electronic Module for A3000 Open Sanitary Fittings - DVS SE Shower (P)	£171.20
EA3OP0062	EM1 Electronic Module for A3000 Open Sanitary Fittings - DVS Tap x 1 IR	£171.20
EA3OP0063	EM1 Electronic Module for A3000 Open Sanitary Fittings - DVS Tap x 2 IR	£171.20
EA3OP0064	EM1 Electronic Module for A3000 Open Sanitary Fittings - DVS Clinical Tap	£135.52
EA3OP0065	EM1 Electronic Module for A3000 Open Sanitary Fittings - DVS Ensuite Basin	£171.20
EPR3O0001	PROTRONIC A3000 Open Fittings Opto-electronically Sensor Module 2 with ID 01250	£101.43

## FRANKE Accessories

The Franke Accessories range includes a variety of products; touch-free soap and paper towel dispensers, s/steel waste bins, toilet roll holders and more.



Franke Accessories		
Product Code	Description	2018 RRP
RODX619	Soap dispenser for wall mounting, s/steel, surface satin finished, material thickness 0.8 mm, folded front cover, cylinder lock with Franke standard key, suitable for liquid soaps and lotions, 1 liter soap tank, push button on front, incl. s/steel screws and dowels.	£76.32
RODX618	Soap dispenser for wall mounting, s/steel, surface satin finished, material thickness 0.8 mm, folded front cover, cylinder lock with Franke standard key, suitable for liquid soaps and lotions, 0.8 liter soap tank, lever to pull, incl. s/steel screws and dowels.	£86.45
RODX625	Touch free soap dispenser for wall mounting, s/steel, surface, satin finished, material thickness 0.8 mm, folded front cover, cylinder lock with Franke standard key, infrared sensor activity for non-touch operation, LED-display shows battery status, needs 6 pcs. 1.5V Alkaline AA batteries, suitable for liquid soaps and lotions, 800 ml soap tank, depending on soap between 0.6 and 1.1 ml is dispensed, mounting height > 300 mm above wash basin or table top, incl. s/steel screws and dowels. Dimensions 120 x 296 x 107 mm (W x H x D)	£114.92
RODX310	Touch free electronic warm air hand dryer for wall mounting, s/steel, surface satin finished, material thickness 1.2 mm, infrared sensor activity for non-touch operation, sensor range adjustable from 10 to 30 cm, cable and plug not included. Connection voltage: 230V, 50 Hz Total power: 2200 W Heater: 2100 W Motor: 100 W Motor mit 2850 U/min Air volume: 274 m³/h Air velocity: 15.5 m/s	£223.59
RODX600	Paper towel dispenser for wall mounting, s/steel, surface satin finished, material thickness 0.8 mm, folded front cover, cylinder lock with Franke standard key, inspection windows on sides, loading capacity 500 - 800 pcs. of paper depending on convolution, incl. s/steel screws and dowels.	£55.97
RODX630	Touch free paper towel dispenser for wall mounting, s/steel, surface satin finished, material thickness 0.8 mm, folded cover with cylinder lock and standard Franke key, infrared sensor activity for non-touch operation, integrated tear-off edge, needs 4 pcs. standard D 1.5V batteries, maintenance free mechanic and easy paper roll change mechanism, for rolls with max. width 205 mm and max. Diameter 200 mm, paper length adjustable to 200, 250 and 300 mm, incl. s/steel screws and dowels.	£280.41
RODX605	Waste bin for wall mounting, s/steel, surface satin finished, material thickness 0.8 mm, rounded edges, mounting either with mounting bracket or directly onto the wall, incl. s/steel screws and dowels. Capacity: approx. 23 litre	£79.45
RODX611	Sanitary towel and disposal bin for wall mounting, s/steel, surface satin finished, material thickness 0.8 mm, folded front cover, approx. 3.7 litre capacity, removable plastic container inside, incl. s/steel screws and dowels.	£72.86
RODX602	Paper towel dispenser, waste bin combination for wall mounting, s/steel, surface satin finished, material thickness 0.8 mm, folded front cover, cylinder lock with Franke standard key, loading capacity 500 - 800 pcs. of paper depending on convolution, waste bin with approx. 23 litre capacity, incl. s/steel screws and dowels.	£346.81
RODX672	Double toilet roll holder with spindle system for wall mounting, s/steel, surface satin finished, material thickness 0.8 mm, folded front cover, cylinder lock with Franke standard key, for 2 rolls with max. 120 mm, second roll will be released after consumption of first roll, with spindles, reserve roll not visible, incl. s/steel screws and dowels.	£80.59
RODX687	Toilet brush holder for wall mounting, s/steel, surface satin finished, material thickness 0.8 mm, folded front, closed cover to the front, lasered opening for brush, white nylon brush with flushing rim cleaner, withdrawal opening either left or right, depending on mounting, removable plastic drip tray, incl. s/steel screws and dowels.	£28.57

Franke Accessories		
Product Code	Description	2018 RRP
RODX619E	Soap dispenser for recessed mounting, s/steel, surface satin finished, material thickness 0.8 mm, folded front cover, cylinder lock with Franke standard key, suitable for liquid soaps and lotions, 1 litre soap tank, push button on front, incl. s/steel screws and dowels.	£116.10
RODX618E	Soap dispenser for recessed mounting, s/steel, surface satin finished, material thickness 0.8 mm, folded front cover, cylinder lock with Franke standard key, suitable for liquid soaps and lotions, 0.8 litre soap tank, lever to pull, incl. s/steel screws and dowels.	£125.39
RODX600E	Paper towel dispenser for recessed mounting, s/steel, surface satin finished, material thickness 0.8 mm, folded front cover, cylinder lock with Franke standard key, loading capacity 500 - 800 pcs. of paper depending on convolution, incl. s/steel screws and dowels.	£100.62
RODX605E	Waste bin for recessed mounting, s/steel, surface satin finished, material thickness 0.8 mm, rounded edges, cylinder lock with Franke standard key, mounting with in-wall frame, incl. s/steel screws and dowels. Capacity: approx. 23 litre	£163.03
RODX602E	Paper towel dispenser - waste bin combination for recessed mounting, s/steel, surface satin finished, material thickness 0.8 mm, folded front cover, cylinder lock with Franke standard key, loading capacity 500 - 800 pcs. of paper depending on convolution, waste bin with approx. 23 litre capacity, incl. s/steel screws and dowels.	£276.38
RODX600ME	Paper towel dispenser for hidden mounting behind wall and mirror, s/steel, surface satin finished, material thickness 0.8 mm, for 600 - 800 paper towels, depending on convolution, filling from bottom, incl. s/steel screws and dowels. 342x464x113 mm (WxHxD)	£96.61
RODX672E	Double toilet roll holder with spindle system for recessed mounting, s/steel, surface satin finished, material thickness 0.8 mm, folded front cover, cylinder lock with Franke standard key, for 2 rolls with max.120 mm, second roll will be released after consumption of first roll, reserve roll not visible, incl. s/steel screws and dowels.	£92.66
SO10L	Liquid soap, organic, 10 litre canister.	£27.44
SO1L	Liquid soap, organic, 1 litre bottle, (minimum order quantity 6 bottles).	£4.32
FH68	Folded paper towels, 1 package contains 168 pieces, (minimum order quantity 20 packages per box).	£3.26
STRX618	Soap dispenser for wall mounting, s/steel, surface satin finished, front with InoxPlus surface refinement for the reduction of finger marks and better cleaning characteristics (easy to clean), material thickness 1.5 mm, curved front cover, cylinder lock with Franke standard key, inspection window on front, suitable for liquid soaps and lotions, 0.8 litre soap tank, with plastic pull lever, incl. s/steel screws and dowels.	£103.75
STRX619	Soap dispenser for wall mounting, s/steel, surface satin finished, front with InoxPlus surface refinement for the reduction of finger marks and better cleaning characteristics (easy to clean), material thickness 1.5 mm, curved front cover, cylinder lock with Franke standard key, inspection window on front, suitable for liquid soaps and lotions, 1 litre soap tank, push button on front, incl. s/steel screws and dowels.	£89.11
STRX625	Touch free soap dispenser for wall mounting, s/steel, surface satin finished, front with InoxPlus surface refinement for the reduction of finger marks and better cleaning characteristics (easy to clean), material thickness 1.5 mm, curved front cover, cylinder lock with Franke standard key, inspection window on front, infrared sensor activity for non-touch operation, red light shows battery status, incl. 6 pcs. 1.5V Alkaline AA batteries, suitable for liquid soaps and lotions, 0.8 litre soap tank, depending on soap between 0.6 and 1.1 ml is dispensed, mounting height >300 mm above wash basin or table top, incl. s/steel screws and dowels.	£154.29
STRX210	Touch free electronic warm air hand dryer for wall mounting, s/steel, surface satin finished, front with InoxPlus surface refinement for the reduction of finger marks and better cleaning characteristics (easy to clean), material thickness 1.5 mm, curved front cover, Infrared sensor activity for non-touch operation, sensor range adjustable from 5 to 33 cm, automatic power shut-off after 60 seconds, due to the extreme high, adjustable air velocity the drying time is shortened strongly, cable and plug not included. Connection voltage: 230V, 50 Hz Total power: 1500 W Heater: 800 W Motor: 700 W Air volume: 120 m³/h Air velocity: 75-110 m/s without a s/steel mesh filter in the air inlet.	£389.98
STRX600	Paper towel dispenser for wall mounting, s/steel, surface satin finished, front with InoxPlus surface refinement for the reduction of finger marks and better cleaning characteristics (easy to clean), material thickness 1.5 mm, curved front cover, cylinder lock with Franke standard key, inspection window on front, loading capacity 300 - 400 pcs. of paper depending on convolution, incl. s/steel screws and dowels.	£99.53

Franke Accessories		
Product Code	Description	2018 RRP
STRX601	Paper towel-, soap dispenser combination for wall mounting, s/steel, surface satin finished, front with InoxPlus surface refinement for the reduction of finger marks and better cleaning characteristics (easy to clean), material thickness 1.5 mm, curved front cover, cylinder lock with Franke standard key, inspection windows on front, paper towel dispenser with loading capacity 300 - 400 pcs. of paper depending on convolution, suitable for liquid soaps and lotions, 0.8 litre soap tank, push lever, incl. s/steel screws and dowels.	£176.55
STRX630	Touch free paper towel dispenser for wall mounting, s/steel, surface satin finished, front with InoxPlus surface refinement for the reduction of finger marks and better cleaning characteristics (easy to clean), material thickness 1.5 mm, curved front cover, cylinder lock with Franke standard key, infrared sensor activity for non-touch operation, integrated tear-off edge, incl. 4 pcs. standard D 1.5V batteries, maintenance free mechanic and easy paper roll change mechanism, for rolls with max. width 205 mm and max. diameter 200 mm, paper length adjustable to 200, 250 and 300 mm, incl. s/steel screws and dowels.	£302.18
STRX650	Face towel dispenser for wall mounting, s/steel, surface satin finished, front with InoxPlus surface refinement for the reduction of finger marks and better cleaning characteristics (easy to clean), material thickness 1.5 mm, curved front with oval aperture for withdrawal of common used face towels, incl. s/steel screws and dowels.	£120.56
STRX605	Waste bin for wall mounting, s/steel, surface satin finished, front with InoxPlus surface refinement for the reduction of finger marks and better cleaning characteristics (easy to clean), material thickness 1.5 mm, curved front cover, cylinder lock with Franke standard key, approx. 34 litre capacity, integrated bag holder, incl. s/steel screws and dowels.	£160.86
STRX607	Waste bin for wall mounting, s/steel, surface satin finished, front with InoxPlus surface refinement for the reduction of finger marks and better cleaning characteristics (easy to clean), material thickness 1.5 mm, curved front cover, cylinder lock with Franke standard key, approx. 45 litre capacity, integrated bag holder, incl. s/steel screws and dowels.	£156.76
STRX608	Folding self-closing lid for waste bin STRX607, s/steel, surface satin finished, front with InoxPlus surface refinement for the reduction of finger marks and better cleaning characteristics (easy to clean), material thickness 1.5 mm, inclined front with self-closing lid, cylinder lock with Franke standard key, incl. s/steel screws and dowels, without waste bin.	£118.83
STRX611	Sanitary towel and disposal bin for wall mounting, s/steel, surface satin finished, front with InoxPlus surface refinement for the reduction of finger marks and better cleaning characteristics (easy to clean), material thickness 1.5 mm, curved front cover, approx. 3.8 litre capacity, folding self-closing lid with piano hinge, removable plastic container inside, incl. s/steel screws and dowels.	£94.65
HBD191	Hygiene bag dispenser for wall mounting, s/steel, surface satin finished with InoxPlus surface refinement for the reduction of finger marks and better cleaning characteristic (easy to clean), material thickness 1.2 mm, edges not welded, inboard lug to hold package, withdrawal from front, incl. premounted double side self-adhesive tap and s/steel screws and dowels, incl. acetone rag to clean bonding surface.	£23.46
STRX615	Hygiene bag dispenser for wall mounting, s/steel, surface satin finished, with InoxPlus surface refinement for the reduction of finger marks and better cleaning characteristics (easy to clean), material thickness 1.2/1.5 mm, with inspection window, incl. s/steel screws and dowels.	£64.02
STRX680	Toilet seat paper dispenser for wall mounting, s/steel, surface satin finished, front with InoxPlus surface refinement for the reduction of finger marks and better cleaning characteristics (easy to clean), material thickness 1.5 mm, curved front cover with oval aperture, cylinder lock with Franke standard key, for Franke seat paper or others, incl. s/steel screws and dowels.	£124.53
STRX670	Jumbo roll holder for wall mounting, s/steel, surface satin finished, front with InoxPlus surface refinement for the reduction of finger marks and better cleaning characteristics (easy to clean), material thickness 1.5 mm, closed casing with curved front, paper withdrawal over two tear-off edges, cylinder lock with Franke standard key, for 1 roll with max. diameter 295 mm, incl. s/steel screws and dowels.	£96.39

Franke Accessories		
Product Code	Description	2018 RRP
STRX671	Double toilet roll holder for wall mounting, s/steel, surface satin finished, front with InoxPlus surface refinement for the reduction of finger marks and better cleaning characteristics (easy to clean), material thickness 1.5 mm, curved front cover, cylinder lock with Franke standard key, for 2 rolls with max.120 mm, second roll will be released after consumption of first roll, without spindles, incl. s/steel screws and dowels.	£94.85
STRX671L	Double toilet roll holder without spindle system for wall mounting, s/steel, surface satin finished, front with InoxPlus surface refinement for the reduction of finger marks and better cleaning characteristics (easy to clean), material thickness 1.5 mm, curved front cover, cylinder lock with Franke standard key, for 2 rolls with max.140 mm, second roll will be released after consumption of first roll, incl. s/steel screws and dowels.	£142.89
STRX672	Double toilet roll holder with spindle system for wall mounting, s/steel, surface satin finished, front with InoxPlus surface refinement for the reduction of finger marks and better cleaning characteristics (easy to clean), material thickness 1.5 mm, curved front cover, cylinder lock with Franke standard key, for 2 rolls with max.120 mm, second roll will be released after consumption of first roll, with spindles, reserve roll not visible, incl. s/steel screws and dowels.	£91.30
STRX692	Hook for wall mounting, s/steel, surface satin finished, 17 mm pipe diameter, drilled hole on bottom for fixation, incl. s/steel screws and dowels.	£9.98
STRX694	Double hook for wall mounting, s/steel, surface satin finished, 18 mm pipe diameter, drilled hole on bottom for fixation, incl. s/steel screws and dowels.	£11.38
STRX687	Toilet brush holder for wall mounting, s/steel, surface satin finished, front with InoxPlus surface refinement for the reduction of finger marks and better cleaning characteristics (easy to clean), material thickness 1.5 mm, curved front cover, white nylon brush with flushing rim cleaner, withdrawal opening either left or right, depending on mounting, removable plastic drop tray, incl. s/steel screws and dowels.	£42.33
STRX618E	Soap dispenser for recessed mounting, s/steel, surface satin finished, front with InoxPlus surface refinement for the reduction of finger marks and better cleaning characteristics (easy to clean), material thickness 1.5 mm, curved front cover with inspection window, cylinder lock with Franke standard key, suitable for liquid soaps and lotions, 0.8 litre soap tank, with plastic pull lever, incl. s/steel screws and dowels.	£191.04
STRX619E	Soap dispenser for recessed mounting, s/steel, surface satin finished, front with InoxPlus surface refinement for the reduction of finger marks and better cleaning characteristics (easy to clean), material thickness 1.5 mm, curved front cover with inspection window, cylinder lock with Franke standard key, suitable for liquid soaps and lotions, 1 litre soap tank, push button on front, incl. s/steel screws and dowels.	£183.62
STRX600E	Paper towel dispenser for recessed mounting, s/steel, surface satin finished, front with InoxPlus surface refinement for the reduction of finger marks and better cleaning characteristics (easy to clean), material thickness 1.5 mm, curved front cover, cylinder lock with Franke standard key, inspection window on front, loading capacity 300 - 400 pcs. of paper depending on convolution, incl. s/steel screws and dowels.	£240.38
STRX601E	Paper towel-, soap dispenser combination for recessed mounting, s/steel surface satin finished, front with InoxPlus surface refinement for the reduction of finger marks and better cleaning characteristics (easy to clean), material thickness 1.5 mm, curved front cover, cylinder lock with Franke standard key, inspection windows on front, paper towel dispenser with loading capacity 300 - 400 pcs. of paper depending on convolution, suitable for liquid soaps and lotions, 0.8 litre soap tank, push lever, incl. s/steel screws and dowels.	£318.60
STRX605E	Waste bin for recessed mounting, s/steel, surface satin finished, front with InoxPlus surface refinement for the reduction of finger marks and better cleaning characteristics (easy to clean), material thickness 1.5 mm, curved front cover, cylinder lock with Franke standard key, approx. 22 litre capacity, integrated bag holder, incl. s/steel screws and dowels.	£342.78
STRX611E	Sanitary towel and disposal bin for recessed mounting, s/steel, surface satin finished, front with InoxPlus surface refinement for the reduction of finger marks and better cleaning characteristics (easy to clean), material thickness 1.5 mm, curved front cover, approx. 3.8 litre capacity, folding self-closing lid with piano hinge, removable plastic container inside, incl. s/steel screws and dowels.	£116.79



Franke Accessories		
Product Code	Description	2018 RRP
STRX602E	Paper towel dispenser, waste bin combination for recessed mounting, s/steel, surface satin finished, front with InoxPlus surface refinement for the reduction of finger marks and better cleaning characteristics (easy to clean), material thickness 1.5 mm, curved front cover, cylinder lock with Franke standard key, inspection windows on front, loading capacity 300 - 400 pcs. of paper depending on convolution, waste bin with approx. 22 litre capacity, integrated bag holder, incl. s/steel screws and dowels.	£380.09
STRX617E	Waste bin, paper towel-, soap dispenser combination for recessed mounting, s/steel, surface satin finished, front with InoxPlus surface refinement for the reduction of finger marks and better cleaning characteristics (easy to clean), material thickness 1.5 mm, curved front cover, cylinder lock with Franke standard key, inspection windows on front, paper towel dispenser with loading capacity 300 - 400 pcs. of paper depending on convolution, suitable for liquid soaps and lotions, 0.8 litre soap tank, push lever, waste bin with approx. 29 litre capacity, integrated bag holder, incl. s/steel screws and dowels.	£522.81
STRX671E	Double toilet roll holder for recessed mounting, s/steel, surface satin finished, front with InoxPlus surface refinement for the reduction of finger marks and better cleaning characteristics (easy to clean), material thickness 1.5 mm, curved front cover with inspection window, cylinder lock with Franke standard key, for 2 rolls with max. diameter 120 mm, second roll will be released after consumption of first roll, without spindles, incl. s/steel screws and dowels.	£172.65
STRX672E	Double toilet roll holder with spindle system for recessed mounting, s/steel, surface satin finished, front with InoxPlus surface refinement for the reduction of finger marks and better cleaning characteristics (easy to clean), material thickness 1.5 mm, curved front cover with inspection window, cylinder lock with Franke standard key, for 2 rolls with max. diameter 120 mm, second roll will be released after consumption of first roll, reserve roll not visible, incl. s/steel screws and dowels.	£121.01
STRX673E	Toilet roll holder for recessed mounting, s/steel, surface satin finished, material thickness 0.8 mm, curved folding cover, for 1 roll with max. width 130 mm, incl. s/steel screws and dowels.	£28.38
E-STRX680	WC-seat paper, 250 pieces per packing	£8.84
HBD191B	Hygiene bag for hygiene-bag-dispenser HBD191/RODX191, 30 pc. per box.	£1.22
HB140	Hygiene bag (paper) fits to hygiene-bag-dispenser STRX615, XINX615, RODX612, 100 pc. per box.	£5.95

## FRANKE EXOS

The new Franke EXOS range consists of functional high performance wash-room accessories and washbasins, utilising high quality materials including s/steel and glass.



EXOS RANGE		
Product Code	Description	2018 RRP
DRYX500	Hands-in hand dryer	£276.66
XINX210	Xinox hand dryer - Satin surface with InoxPlus surface refinement	£576.50
EXOS625X	EXOS. Electronic Soap Dispenser s/steel complete coated	£246.43
EXOS625B	EXOS. Electronic Soap Dispenser Black Glass	£285.01
EXOS625W	EXOS. Electronic Soap Dispenser White Glass	£285.01
EXOS618X	EXOS. Liquid Soap Dispenser s/steel complete coated	£203.99
EXOS618B	EXOS. Liquid Soap Dispenser Black Glass	£241.08
EXOS618W	EXOS. Liquid Soap Dispenser White Glass	£241.08
EXOS616X	EXOS. Foam Soap Dispenser s/steel complete coated	£226.79
EXOS616B	EXOS. Foam Soap Dispenser Black Glass	£263.84
EXOS616W	EXOS. Foam Soap Dispenser White Glass	£263.84
ZEXOS616	Interchangeable front panels for EXOS. Soap dispenser - InoxPlus-coated front panel	£47.90
ZEXOS616B	Interchangeable front panels for EXOS. Soap dispenser - Black toughened safety glass front panel	£79.41
ZEXOS616W	Interchangeable front panels for EXOS. Soap dispenser - White toughened safety glass front panel	£79.41
ZEXOS625K	EXOS. Automatic soap dispenser conversion kit	£104.01
ZEXOS618K	EXOS. Liquid soap dispenser conversion kit	£83.15
ZEXOS616K	EXOS. Foam soap dispenser conversion kit	£106.31
EXOS637X	EXOS. Paper Towel Roll s/steel complete coated	£430.67
EXOS637B	EXOS. Paper Towel Roll Black Glass	£496.92
EXOS637W	EXOS. Paper Towel Roll White Glass	£496.92
ZEXOS637	Interchangeable front panels for EXOS. Paper towel dispenser - InoxPlus-coated front panel	£94.01
ZEXOS637B	Interchangeable front panels for EXOS. Paper towel dispenser - Black toughened safety glass front panel	£144.24
ZEXOS637W	Interchangeable front panels for EXOS. Paper towel dispenser - White toughened safety glass front panel	£144.24
EXOS600X	EXOS. Paper Towel Holder s/steel complete coated	£180.91
EXOS600B	EXOS. Paper Towel Holder Black Glass	£231.29



EXOS RANGE		
Product Code	Description	2018 RRP
EXOS600W	EXOS. Paper Towel Holder White Glass	£231.29
ZEXOS600	Interchangeable front panels for EXOS. Paper towel dispenser - InoxPlus-coated front panel	£69.17
ZEXOS600B	Interchangeable front panels for EXOS. Paper towel dispenser - Black toughened safety glass front panel	£106.31
ZEXOS600W	Interchangeable front panels for EXOS. Paper towel dispenser - White toughened safety glass front panel	£106.31
EXOS605X	EXOS. Waste Bin s/steel complete coated	£294.91
EXOS605B	EXOS. Waste Bin Black Glass	£349.67
EXOS605W	EXOS. Waste Bin White Glass	£302.61
ZEXOS605	Interchangeable front panels for EXOS. Waste bin - InoxPlus-coated front panel	£77.88
ZEXOS605B	Interchangeable front panels for EXOS. Waste bin - Black toughened safety glass front panel	£127.07
ZEXOS605W	Interchangeable front panels for EXOS. Waste bin - White toughened safety glass front panel	£127.07
ANMW0010	EXOS. Single washbasin - standard (W600 x H125 x D500m)	£199.41
ANMW0011	EXOS. Single washbasin - standard (W900 x H125 x D500m)	£232.67
ANMW0001	EXOS. Single washbasin - Wheelchair accessible (W600 x H125 x D500m)	£243.00
ANMW0002	EXOS. Single washbasin - Wheelchair accessible (W900 x H125 x D500m)	£273.99
ANMW0003	EXOS. Hand washbasin - Wheelchair accessible (W500 x H121 x D400m)	£179.88
ZANMW900	Dome waste valve DN 32	£10.09
ZANMW901	Strainer waste DN 32	£2.41
<b>Complementary Products</b>		
SD80	Soap dispenser for table top mounting into worktops	£42.42
RODX605TT	Waste disposal flap for table top installation	£60.63
RODX607TT	Waste chute for table top installation	£29.95
RODX600TT	Paper towel dispenser for installation from the top	£193.96
SO1L	Organic liquid soap, 1 litre bottle (minimum order QTY 6 bottles) suitable for EXOS625 & EXOS618	£4.32
SO10L	Liquid organic soap, 10 litre, suitable for EXOS625 & EXOS618	£27.44
E-XINX616 FOAM	Foam soap cartridge 650ml (minimum order QTY 9 bottles) suitable for EXOS616	£6.76
FH68	FH68 Z-folded paper towels, 255 x 92mm 168 PCS per pack, 20 packs per box (minimum order QTY 1 box) suitable for EXOS600	£3.26





Dart Valley Systems Ltd  
Kemmings Close  
Long Road  
Paignton  
Devon  
TQ4 7TW  
United Kingdom

**t** +44 (0)1803 529021

**f** +44 (0)1803 559016

**e** [sales@dartvalley.co.uk](mailto:sales@dartvalley.co.uk)

**w** [www.dartvalley.co.uk](http://www.dartvalley.co.uk)