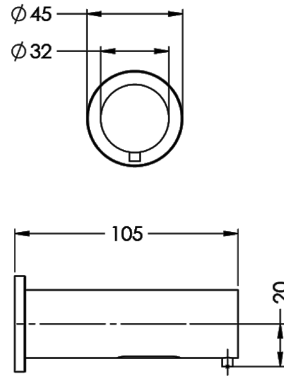


KWC

WM Soap dispenser brushed nickel finish

SD01-005



SD01-005

WM Soap dispenser brushed nickel finish

DVS soap dispensers feature no-touch operation with a minimalistic easy to clean design. Available in either chrome or brushed finish, these dispensers are suitable for a wide range of environments including; hospitals, airports, motorway services, food preparation facilities, supermarkets and more

Requires supplied Mains PSU or Battery unit to operate the soap dispenser (Batteries not included). Mains PSU and Battery unit can also be used simultaneously in order to enable back up feature.

Technical data

Material	Brass
Gross weight	0.30 kg
Type of soap dispenser	WM Straight
Type of mounting	Wall mounted
Surface finish	Brushed Nickel
Total soap dispenser length	105mm
Power supply	AC: 220V / DC: 6V (4x AA)
Bottle capacity	1.6L - 2L
Ambient temperature	Normal Temperature
Type of operation	No Touch Sensor
Sensor range	15 ± 3cm
Viscosity range of soap	100-3500cp (mpA • s)
Soap volume	≤2mL/ times (four gears)