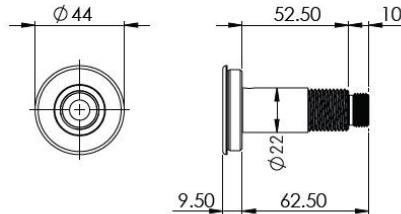


KWC

Push sensor for backplates



VR00-008

Push sensor for backplates

Tactile Switch for Backplates. Brushed Finish Stainless Steel bezel with temperature indication insert.

Technical data

Material	Stainless steel
Surface finish	Brushed
Gross weight	0.2kg
Thread diameter	Ø21mm (½" BSP)
Type of mounting	Backplate mounted
Operation type	Tactile switch
Cable length	15m
Overall dimensions	72mm (L) x Ø44mm