

PUSH SENSOR FOR BACKPLATES

With Red Insert

VR00-006

DVS Tactile Switch for Backplates.
Brushed Finish Stainless Steel bezel with temperature indication insert.

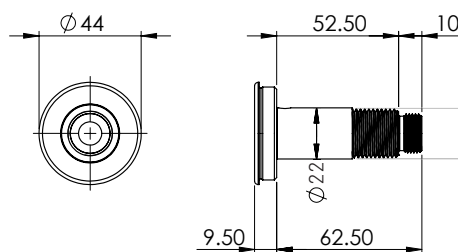


PRODUCT NUMBER

VR00-006

TECHNICAL DATA

Material	Stainless Steel
Surface finish	Brushed
Gross weight	0.2 kg
Overall dimensions	72mm (L) x Ø44mm
Thread diameter	Ø21 mm (½" BSP)
Type of mounting	Backplate mounted
Operation type	Tactile switch
Cable length	3m



ALL DIMENSIONS IN MM

Last updated:
2019-10-21, Dart Valley Systems