

# PUSH SENSOR FOR BACKPLATES

With Blue Insert

## VR00-005

DVS Tactile Switch for Backplates.  
Brushed Finish Stainless Steel bezel with temperature indication insert.

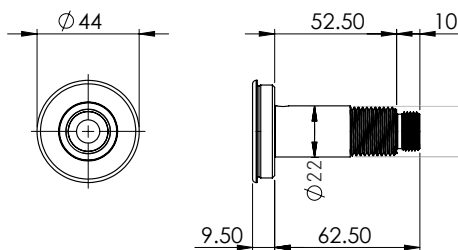


### PRODUCT NUMBER

VR00-005

### TECHNICAL DATA

Material	Stainless Steel
Surface finish	Brushed
Gross weight	0.2 kg
Overall dimensions	72mm (L) x Ø44mm
Thread diameter	Ø21 mm (½" BSP)
Type of mounting	Backplate mounted
Operation type	Tactile switch
Cable length	3m



ALL DIMENSIONS IN MM

Last updated:  
2019-10-21, Dart Valley Systems