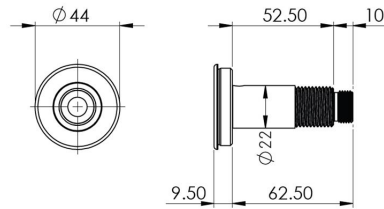


Push sensor for backplates



VR00-005

Push sensor for backplates

DELABIE DVS Tactile Switch for Backplates. Brushed Finish Stainless Steel bezel with temperature indication insert.

Technical data

Material	Stainless steel
Surface finish	Brushed
Gross weight	0.2kg
Overall dimensions	72mm (L) x Ø44mm
Thread diameter	Ø21mm (½" BSP)
Type of mounting	Backplate mounted
Operation type	Tactile switch
Cable length	3m