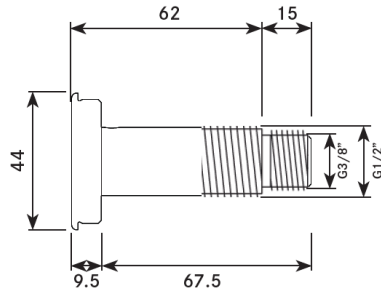
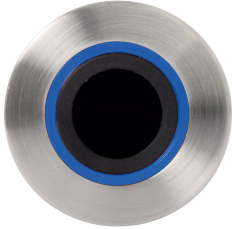


KWC

Wave-on sensor for backplates



VR00-003

Wave-on sensor for backplates

Wave-on sensor for backplates with blue insert. Stainless Steel. Brushed finish, complete with 15m cable length.

Technical data

Material	Stainless steel
Surface finish	Brushed
Gross weight	0.2kg
Thread diameter	Ø21mm / Ø16.7mm
Type of mounting	Wall mounted (on backplate)
Operation type	A.I.R (Active Infrared) touch-free
Cable length	15m
Adjustable settings	Dictated by control box used
Overall dimensions	77mm (L) x Ø44mm