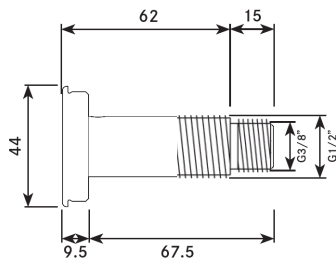
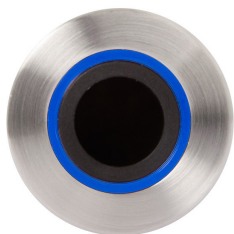


Wave-on sensor for backplates



VR00-001

Wave-on sensor for backplates

Wave-on sensor for backplates with blue insert. Stainless Steel. Brushed finish, complete with 3m cable length.

Technical data

Material	Stainless steel
Surface finish	Brushed
Gross weight	0.2kg
Overall dimensions	77mm (l) x Ø44mm
Thread diameter	Ø21mm / Ø16.7mm
Type of mounting	Wall mounted (on backplate)
Operation type	A.I.R (active infrared) touch-free
Cable length	3m
Adjustable settings	Dictated by control box