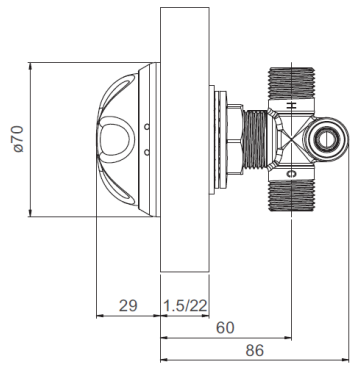


Temperature blending valve adjuster



SH00-011

Temperature blending valve adjuster

In many public areas supplying water at 41°C is sufficient. If however, the requirement is to provide 41°C with user adjustment between this temperature and cold (determined by the cold input temperature), The temperature blending valve adjuster can be used to accommodate this facility. The blender adjuster is Ligature Resistant and Anti-Tamper with Robust Construction whilst retaining an Aesthetically pleasing design.

Technical data	
Material - body	Chromium-plated brass
Material - fittings	DZR brass
Surface finish	Chromed finish
Weight	0.9kg
Wall thickness compatibility	1.5mm - 22mm
Type of operation	Manual
Water connection	Brass ½" BSP connection